

# Solanco Fair Offers Farm Family Fun

## HIGHLIGHTS OF THE FAIR

### WEDNESDAY, SEPTEMBER 18

- 10 00 a m Judging Dairy Cattle
- 10 00 a m Various Exhibit Judging
- 2 00 p m Judging Sheep
- 6 30 p m Parade
- 8 30 p m Tug of War  
Lightweight and Heavyweight Division

### THURSDAY, SEPTEMBER 19

- 10 00 a m Judging Dairy Cattle
- 3 00 p m Judging Swine
- 7 00 p m Judging Beef
- 7 00 p m Baby Parade
- 7 15 p m Animal Roundup Contest  
(registration 6 00 p m - 7 00 p m)

### FRIDAY, SEPTEMBER 20

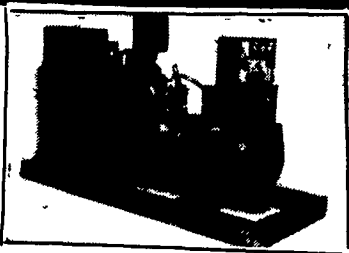
- 10 00 a m Tractor Driving Contest  
FFA 4-H, and Open Class
- 5 00 p m Celebrity Invitational Milking Contest
- 6 00 p m Market Livestock Sale  
Youth Participation Awards will be awarded before Steer Sale in the Show, Sale barn
- 6 30 p m Peanut and Candy Scramble  
(Age 5 and Under)
- 8 00 p m Obstacle Course  
(registration 7 15 p m - 7 45 p m)



From the left, Robert Wentworth holds the halter of the reserve grand champion Ayrshire of the 1995 Solanco Fair, while Bonnie Wentworth holds the halter of her grand champion. Also shown is judge Donald Gable.



Hope Long holds the halter of her supreme champion market steer of the 1995 Solanco Fair, while judge John Hausner stands behind.



## MAXIPOWER

### MAXIPOWER, LLC

440 Schaeffer Road • Lebanon, PA 17042-9753  
Phone (717) 273-4544 • (800) 272-6294  
Fax: (717) 273-5186

Diesel, L.P., Natural gas, PTO Generators

#### Used Units:

70 kW diesel Onan      25 kW PTO Onan trailer & shaft  
140 kW diesel Maxi Power

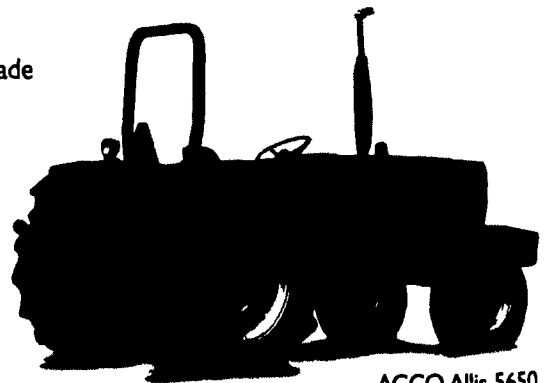
Flexibility is the key to staying productive. And that's exactly what you'll get with the AGCO® Allis 5650 utility tractor.

## The Key To Effective Middle Management.

In fact, this mid-range tractor has a 45 PTO hp engine that offers you the ultimate in maneuverability. Its low height and low center of gravity make this the ideal tractor for working inside buildings and other confined work areas. And because the platform is low to the ground, it's easy to get on and off the tractor.

- The synchromesh transmission has 12 forward and 12 reverse speed choices, with synchronized shifting in four gears and a synchronized forward/reverse shuttle.
- These directional changes help to reduce loader and rear blade cycle times.
- The AWD models feature a true centerline drive shaft for more efficient power transfer and less maintenance.
- As always, behind every AGCO Allis tractor lies a 4-year/4,000-hour warranty that's backed by your dealer.

To get a closer look at the 5650, stop by and see us. We'll be happy to show you the way to higher productivity.



AGCO Allis 5650



Great Ideas. Good Business

### SEE YOUR DEALER TODAY!

**MANOR MOTORS**  
On Rte. 553  
Penn Run, Pa. 15765  
412-254-4753

**HERNLEY'S FARM EQUIP., INC.**  
Elizabethtown, Pa.  
717-367-8867

**SANDY LAKE IMPLEMENT**  
Sandy Lake, Pa.  
412-376-2489

**NICHOLS FARM EQUIP.**  
Bloomsburg, Pa.  
717-784-7731

**B. EQUIP., INC.**  
Waynesboro, Pa.  
717-762-3193

**B.H.M. FARM EQUIP. INC.**  
Annville, Pa.  
717-867-2211

**GRUMELLI FARM SERVICE**  
Quarryville, Pa.  
717-786-7318

**HOLTRY'S EQUIPMENT**  
Roxbury, Pa.  
717-532-7261

**C.J. WONSIDLER BROS.**  
Quakertown, Pa.  
215-536-7523  
New Tripoli, Pa.  
215-767-7611  
Oley, Pa.  
215-987-6257



Mark L. James      James R. Clark

### Estate Planning for Farm Families

- Wills, trusts and tax planning
- Charitable giving

### Business Planning for Farm Families

- Farm partnerships and corporations
- Succession Planning/Farm Transfers

### Real Estate

- Tax-free exchanges of real estate
- Real estate settlements
- Public sales

### Estate Settlements

- Prompt settlement (most completed in 3 months)
- Tax planning during settlement

54 Queen Road, P.O. Box 497  
Intercourse, PA 17534  
**(717)768-7100**

Offices also in:

New Holland      Willow Street  
(717)354-6083      (717)464-4483