

# LANCASTER COUNTY LIVESTOCK MARKET AUCTION

Lancaster County Weekly  
Lancaster, Pa.  
Friday, Sept. 13, 1996

Market update not available from USDA or from the market.

## Lancaster County Weekly

NEW HOLLAND, PA  
SEPTEMBER 6, 1996

	Cattle	Calves
THIS WEEK	2600	1800
LAST WEEK	2284	1772
LAST YEAR	2808	1582

CATTLE: Slaughter steers firm to 1.00 higher; slaughter heifers not tested; cows steady, instances 1.00 higher; bullocks and bulls 1.00-2.00 lower. Supply included 44 percent slaughter steers, 4 percent slaughter heifers, 35 percent cows, 4 percent bulls, with the balance feeders.

SLAUGHTER STEERS: High Choice and Prime 2-4 1170/1450 lbs. 70.00-71.50, around 60 head 71.60-72.50, five head 2-3 72.75-73.10; Choice 2-3 few 4 1075/1460 lbs. 66.85-70.00, few 70.00-70.50; couple lots Choice mostly 3 1490/1580 lbs. 64.60-65.25; Select and low Choice 2-3 1075/1500 lbs. 63.25-67.25.

HOLSTEINS: High Choice and Prime 2-3 1250/1410 lbs. 60.75-61.75; Choice 2-3 1250/1450 lbs. 56.00-59.00; Select 1-3 1190/1500 lbs. 50.50-55.00.

COWS: Breaking Utility and Commercial 2-3 37.00-41.00, 41.00-43.75; Cutter and Boning Utility 1-3 32.00-36.00, 36.00-39.00; 39.00-40.50; Canner and low Cutter 1-2 22.00-27.50, 27.50-31.50.

BULLOCKS: Couple Choice 2-3 1275/1380 lbs. 49.00-50.00; few Select 2-3 975/1300 lbs. 44.50-48.00.

BULLS: Yield Grade 1 1300/2100 lbs. 39.00-42.00, individual 1360 lbs. 45.00; Yield grade 2 1200/1850 lbs. 33.50-38.00.

CALVES: Vealers and slaughter calves steady. Demand uneven for Holstein bulls to return to farm, fair early, very narrow late; demand good for Holstein heifers to return to farm.

VEALERS: Choice 170/320 lbs. 50.00-80.00; high Good and low Choice 130/290 lbs. 40.00-60.00, 80/110 lbs. 14.00/24.00; Standard and low Good 55/85 lbs., 10.00-17.00.

SLAUGHTER CALVES: Good and Choice 320/475 lbs. 34.00-43.00.

RETURNED TO FARM: Around 300 head 95/125 lbs. Holstein bulls early 69.00-82.00, later sales 40.00-60.00, 85/90 lbs. 22.00-40.00; small frame 85/115 lbs. 20.00-43.00. Bulk 90/115 lbs. Holstein heifers 120.00-150.00, 20 head 85 lbs. 92.00; few small frame 80/105 lbs. 20.00-50.00.

## Lancaster Livestock

NEW HOLLAND, PA  
SEPTEMBER 10, 1996

Cattle Calves Hogs Sheep Goats  
MONDAY'S AUCTION

726 79 87 371 262

LAST WEEK

517 99 116 603 500

LAST YEAR

843 40 147 443 146

CATTLE: Slaughter steers fully steady instances 1.00 higher, mainly on Holsteins; slaughter heifers firm to 1.00 higher; cows steady; bullocks fully steady; bulls 1.00-2.00 higher. Supply included 59 percent slaughter steers, 13 percent slaughter heifers, 16 percent cows, with the balance bulls.

SLAUGHTER STEERS: High Choice and Prime 2-4 1200-1400 lb 70.60-71.75, around 15 head 72.25-74.00; Choice 2-3 few 4 1150-1450 lb 67.50-70.00, several 70.00-70.60; Select and low Choice 2-3 1100-1450 lb 62.75-67.50.

HOLSTEINS: High Choice and Prime 2-3 1350-1550 lb 62.75-64.75; Choice 2-3 1185-1500 lb 58.00-60.75; Select 1-2 1150-1400 lb 53.00-55.75.

SLAUGHTER HEIFERS: Choice 2-3 985-1225 lb 62.50-65.85, couple Choice 2 66.75-67.50

COWS: LOW DRESSING BULK HIGH DRESSING Breaking Utility and Commercial 2-3 38.00-40.00 40.00-41.50 Commercial 3-4 32.00-36.00 Cutter and Boning Utility 1-3 31.00-34.00 34.00-38.00 Canner and low Cutter 1-2 25.00-27.00 27.00-30.00

BULLOCKS: Select 1-3 900-1300 lb 44.50-50.00; couple Choice 2-3 1150-1300 lb 50.50-54.50.

BULLS: Yield grade 1 1200-1800 lb 41.00-48.25, few 48.50-51.00, six head 52.00-54.50; Yield grade 2 1000-1600 lb 36.00-41.00.

CALVES: Vealers fully steady; slaughter calves 5.00-8.00 higher.

VEALERS: Couple Choice 180-270 lb 70.00-80.00; high Good and low Choice 130-250 lb 40.00-60.00, 95-130 lb 25.00-35.00; Standard and low Good 65-85 lb 15.00-20.00.

SLAUGHTER CALVES: Good and Choice 200-400 lb 45.00-60.00; Choice 400-600 lb 40.00-50.00; Good 400-600 lb 30.00-40.00.

RETURNED TO FARM: Few 90-110 lb Holstein bulls 35.00-45.00.

HOGS: Insufficient volume any one class for a market test.

SHEEP: Slaughter lambs 5.00-10.00 higher; slaughter ewes steady to 5.00 higher. Supply includes an estimated 85 percent slaughter lambs with the balance slaughter ewes.

SLAUGHTER LAMBS: Choice 1-3 60-80 lb 95.00-105.00, 80-100 lb 85.00-95.00, several 2-3 115-130 lb

## Vintage Livestock

PARADISE, PA  
SEPTEMBER 10, 1996

Cattle Calves Sheep Goats

TODAY

619 915 0 0

LAST TUESDAY

674 1012 0 0

LAST YEAR

803 1030 26 1

CATTLE... USDA ... Supply included 31% slaughter steers and 61% cows ...sl. steers weak to .50 lower, cows steady to weak, other classes not tested.

SLAUGHTER STEERS: Choice 2-3 few 4 1100/1450 lbs. 66.00-69.75, few 70.00-70.35, Choice and Prime 2-4 1150/1425 lbs. 70.50-72.00, couple 72.10-73.25, Select and Low Choice 2-3 1075/1425 lbs. 62.75-66.50.

HOLSTEINS: one lot Choice 1-3 1255 lbs. 53.75.

COWS: Breaking Utility and Commercial 2-3 bulk 37.00-40.00, high dressing 40.00-42.50, Cutter and Boning Utility 1-3 low dressing 33.75-37.50, bulk 37.50-39.50, Canner and Low Cutter 1-2 low dressing 23.00-27.00, bulk 27.00-30.00.

BULLS: Yield Grade No. 1-2 1245/1850 lbs. 33.50-39.50.

CALVES...Vealers steady. Supply included 817 in graded sale of which 66% sold to return to farm.

VEALERS: couple High Good and Low Choice 140/360 lbs. 25.00-40.00, 80/110 lbs. 12.00-15.00, Standard and Low Good 70/85 lbs. 8.00-10.00.

RETURNED TO FARM: 20 head 120/125 lbs. Holstein bulls 67.00-70.00, 215 head 100/115 lbs. 73.00-79.00, 75 head 95 lbs. 54.00-64.00 and 60 head 90 lbs. 15.00-37.00, 70 head small frame 100/115 lbs. 15.00-17.00; 5 head 110/115 lbs. Holstein heifers 137.00, 40 head 90/105 lbs. 185.00, 20 head 80/85 lbs. 70.00-80.00 and 10 head small frame 90/110 lbs. 60.00-70.00.

SHEEP...NO MARKET TEST!

GOATS...NO MARKET TEST!

75.00-80.00.

SLAUGHTER EWES: Utility and Good 1-2 120-150 lb 45.00-55.00, 2-3 130-225 lb 30.00-40.00.

GOATS: All goats sold by the head. Billies: Medium 60.00-80.00; few Large 80.00-110.00, couple 110.00-120.00. Nannies: Medium and Large 55.00-65.00. Yearlings: Good and Choice 50.00-65.00. Kids: 40.00-60.00; Good 30.00-40.00.

## Lancaster Livestock Auction

Wednesday's market report has been discontinued until further notice because of insubstantial receipts.

## VA Feeder Sales

MARSHALL, VA  
SEPTEMBER 11, 1996

Steers 606 head Medium and Large 1 Small 1 Medium and Large 2 300-400 58.00 - 60.00 50.00 54.50 400-500 54.00 - 65.00 44.00 - 50.00 52.00 - 59.00 500-600 55.00 - 67.00 49.00 - 55.00 54.00 - 60.00 600-700 56.50 - 67.00 - 53.00 - 62.75 700-800 53.50 - 65.50 - 57.00 - 62.00 800-900 56.00 - 58.00 - 56.00 - 59.00 900-1000 55.75 - 62.25 - 55.25 1000-1100 53.50 - 56.75 - -

HOLLINS, VA  
SEPTEMBER 9, 1996

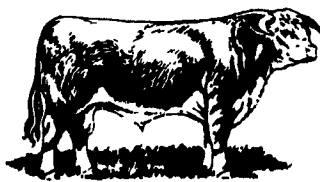
Feeder Cattle 331 head Steers 152 head Medium and Large 1 Small 1 Medium and Large 2 400-500 56.00 - 62.00 45.00 - 52.00 50.00 - 57.00 500-600 50.50 - 56.50 44.00 - 49.00 47.00 - 54.00 600-700 52.00 - 59.00 - 46.00 - 53.00 700-800 53.00 - 57.00 - 45.00 - 55.00 800-900 52.00 - 58.50 - 44.00 - 53.00

LYNCHBURG, VA  
SEPTEMBER 9, 1996

Feeder Cattle 566 head Steers 222 head Medium and Large 1 Small 1 Medium and Large 2 300-400 56.00 - 58.50 38.00 - 45.50 48.00 - 55.50 400-500 55.00 - 60.00 32.00 - 45.00 46.00 - 57.00 500-600 48.75 - 58.50 - 48.00 - 58.00 600-700 56.50 - 57.50 - 41.00 - 53.00 700-800 57.00 - 59.50 - 45.00 800-900 57.00 - 1000-1100 55.50 - 55.75 - -

ABINGDON, VA  
SEPTEMBER 11, 1996

Holstein Steers Medium and Large 1 and 2 Medium and Large 3 few low 2's 300-400 45.50 46.00 400-500 48.00 47.50 500-600 46.00 45.50 600-700 42.00 35.00 700-800 42.70 38.50 800-900 43.90 ---- 900-1000 48.80 ----



## QUALITY FEEDER CATTLE

Financing Available

\* Fixed Interest Rates • Interest Due when Cattle Are Sold • No Monthly Payments

## SCARFF BROS. INC.

Cattle Dealers • Licensed & Bonded

2300 Fallston Road • Fallston MD 21047

Lance N. Scarff  
Farm (410) 877-0370  
Fax (410) 877-7802

C. Howard Scarff, II  
Home (717) 445-4355  
Fax (717) 445-7287  
Mobile (717) 940-2633

W. Conly Scarff  
Home (410) 838-5883  
Mobile (410) 790-2650

Contract Feeding Programs • Marketing of Finished Cattle • Dairy Heifers

## B&R CATTLE CO

RD 1, Marietta, PA  
17547

Office Phone:

(717)653-8164

Specializing in  
Stockers &  
Feeders

JOHN BOWMAN  
(717)653-5728

RON RANCK  
(717)656-9849

## KIRKWOOD HAY AUCTION

Hay, Straw and Grain Auction

EVERY TUESDAY

11:00

Located Rt. 472 5 miles south of Quarryville or 6 miles north of Oxford corner of Rt. 472 and Noble Road.

Lloyd H. Kreider,

Auctioneer

AU-000513L

No out of state checks

## HAY, STRAW, & CORN

— SALE —

Sale Starts  
Every Friday At 10 AM



## GREEN DRAGON MARKET & AUCTION

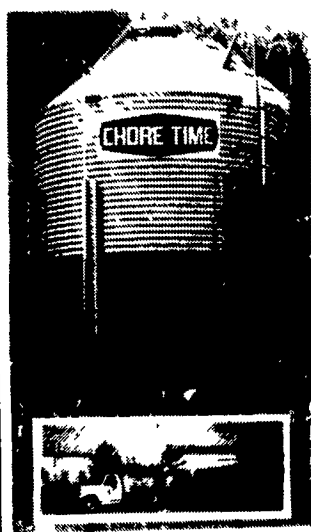
955 N. State St.

Ephrata, Pa. (717) 738-1117

1 mile North of Ephrata on N. State St.

Out of State Buyers-Cash or Certified Check Only

## Get more capacity and better service from Chore-Time's New Next Generation bin



High Capacity 40" roof (left) allows more storage and stays cleaner than conventional 30" roof (right)



Hydro-Shield™ Weather Guard prevents water from running down hopper



ACCESS PLUS™ permits easy clean out of the bin from the ground.

## Contracts available call for information

- Breeder
- Pullets
- Turkey
- Hog

Call for our free brochure "What is contract production?"

Replace your bulbs and save electricity with  
SCREW IN FLUORESCENT LIGHTS  
5-7-9  
Watts 5.49 ea. | 13  
Watts 5.79 ea.

Light Bulbs 25 to 100 Watts 34¢ Ea.  
Brass Base - 5000 Hrs.

In Stock-36" & 48" Wide Kraft Paper

Made in USA

Authorized Northeast Agri Systems Distributor

Northeast Agri Systems, Inc.  
Flyway Business Park  
139A West Airport Road  
Litz PA 17543  
Ph (717) 569-2702  
1-800-673-2580



## VINTAGE SALES STABLES, INC.

### SALE TUESDAYS

10:30 A.M.  
SLAUGHTER CATTLE AUCTION-  
STEERS, BULLS, HEIFERS,  
COWS, FEEDER CATTLE

6:30 P.M.  
CALVES, SHEEP, GOATS  
•GET CALVES IN EARLY-  
OUR STATE GRADER  
STARTS AT 10:30 A.M.

Selling Feeders Every Tuesday  
At Approx. 1 PM

### FOR MORE INFORMATION CONTACT

L. ROBERT FRAME, SR., PRESIDENT  
BUS (717) 442-4181 BUS (717) 768-8204  
HOME (215) 458-8518  
IRWIN MARTIN, FIELD REP.  
(717) 733-7434  
KENNETH E. HERSHEY, FIELD REP.  
(717) 442-4874

TRUCKING SERVICE  
AVAIL-LOCAL &  
LONG DISTANCE  
(RT. 30, 10 MILES EAST  
OF LANCASTER IN  
PARADISE, PA)

