

Estimated Daily Livestock Slaughter

Under Federal Inspection
September 11, 1996

	CATTLE	CALVES	HOGS	SHEEP
WEDNESDAY 9/11/96 (EST)	119,000	8,000	366,000	15,000
WEEK AGO (EST)	122,000	7,000	350,000	16,000
YEAR AGO (ACT)	131,000	6,000	357,000	18,000
WEEK TO DATE (EST)	385,000	22,000	1,080,000	45,000
SAME PD LT WK (EST)	251,000	14,000	712,000	32,000
SAME PD LT YR (EST)	387,000	18,000	1,063,000	51,000

PREVIOUS DAY ESTIMATED TUESDAY, STEER AND HEIFER 104,000, COW AND BULL 29,000.

SOURCE: USDA MARKET NEWS, WASHINGTON, D.C.

Central U.S.

Carlot

Beef Report

September 11, 1996

Report supplied by USDA

USDA NATIONAL CARLOT BEEF REPORT (INCLUDES MAJOR PRODUCTION AREAS IN THE MIDWEST AND TEXAS) AS OF 3 P.M.

COW AND BULL CARCASS

4.0 LOADS

FOB OMAHA

COMPARED TO TUESDAY'S 3 P.M. REPORT: UTILITY CARCASSES 1.00 LOWER; CUTTER NOT ESTABLISHED. DEMAND AND OFFERINGS MODERATE.

UT, BRK 2-4 450 LBS. AND UP, 2.0 LOADS, RANGE 54.00, LATEST ESTB. MKT. 54.00.

UT, BNG 1-3 400 LBS. AND UP, 2.0 LOADS, RANGE 58.00, LATEST ESTB. MKT. 58.00.

CUTTER 1-2 350 LBS. AND UP, LATEST ESTB. MKT. 58.00-59.00 D.

BULLS YG1 500 LBS. AND UP, LATEST ESTB. MKT. 70.00 D.

COW AND BULL CARCASSES

CAF WEST COAST

LOADS REPORTED

COMPARED TO LAST WEEK:

MARKET FOR WEEK ENDED SEPT. 6, 1996.

UT, BNG 1-3 400 LBS. AND UP, RANGE 59.00.

CUTTER 1-2 350 LBS. AND UP, RANGE 59.00.

BONELESS PROCESSING BEEF/ BEEF TRIMMINGS
120.0 LOADS REPORTED

LEAN BONELESS BEEF UNEVEN, WITH A WEAK UNDERTONE PREVAILING; 75% AND 65% GENERALLY WEAK. DEMAND LIGHT TO MODERATE ON MOSTLY MODERATE TO HEAVY OFFERINGS. BEEF TRIMMINGS GENERALLY STEADY ON LIGHT TO MODERATE DEMAND AND OFFERINGS.

FOB OMAHA BASIS

90% FR, 17 LOADS, RANGE 82.0-86.0 WT. AVG. 83.71.

90% FZ, RANGE 87.5-88.0, WT. AVG. 87.75 C.

85% FR, RANGE 76.0-79.0, WT. AVG. 77.07 A.

85% FZ, UNQUOTED.

75% FR, 11 LOADS, RANG 68.0, WT. AVG. 68.00.

75% FZ, UNQUOTED.

65% FR, 3 LOADS, RANGE 59.5, WT. AVG. 59.50.

65% FZ, UNQUOTED.

50% FR, 56 LOADS, RANGE

46.00-47.00, WT. AVG. 46.44.

50% FZ, 18 LOADS, RANGE 53.00, WT. AVG. 53.00.

50% BOX, UNQUOTED.

BULL 92-94, RANGE 105.00, WGHTD. AVG. 105.00 D.

FOB EAST TX & OK

90% FR, 15 LOADS, RANGE 82.0-84.00, WT. AVG. 82.53.

90% FZ, UNQUOTED.

85% FR, UNQUOTED.

85% FZ, UNQUOTED.

75% FR, UNQUOTED.

75% FZ, 65% FR, 65% FZ, UNQUOTED.

CAF NORTHEAST AREAS

90% FR, UNQUOTED.

90% FZ, UNQUOTED.

85% FR, UNQUOTED.

85% FZ, UNQUOTED.

75% FR, RANGE 79.0, WT. AVG. 79.00.

85% FZ, UNQUOTED.

75% FR, RANGE 66.0, WT. AVG. 66.00.

75% FR, UNQUOTED.

65% FR, RANGE 58.0-60.00 WT. AVG. 58.86.

65% FZ, UNQUOTED.

50% FR, RANGE 44.0-47.5, WT. AVG. 45.54.

50% FZ, UNQUOTED.

ABCDE AFTER QUOTES REPRESENTS DAYS SINCE LAST ACTUAL MARKET TEST. QUOTES ARE DROPPED AFTER 5 DAYS OF NO TEST OR BEFORE IF THEY NO LONGER REFLECT CURRENT MARKET CONDITIONS.

SOURCE: USDA MARKET, DES MOINES, IA.

Morrison Cove

Livestock

Martinsburg, Pa.

September 9, 1996

Report supplied by auction

CATTLE 234. STEERS CHOICE

66.50-72.00; GOOD 63.50-66.00.

HEIFERS: CHOICE 65.50-70.00; GOOD 60.50-64.50.

COWS: UTILITY & COMMERCIAL 33.00-43.00; CANNER & LOW CUTTER 18.00-32.50.

BULLOCKS: 41.00-57.00.

BULLS: YIELD GRADE NO. 1 35.00-49.00.

FEEDER CATTLE: STEERS 33.00-54.00; BULLS 30.00-45.00; HEIFERS 32.00-48.00.

CALVES 105. PRIME, NO MKT. TEST; CHOICE 70.00-78.00; GOOD 49.00-59.00; STANDARD 10.00-25.00; HOLSTEIN BULLS 90-130 LBS. 30.00-55.00; HOLSTEIN HEIFERS 90-130 LBS. 80.00-110.00.

HOGS: 251. US NO. 1-2 52.00-53.00; US NO. 1-3 51.00-52.00.

SOWS: US NO. 1-3 42.00-50.00.

BOARS: 37.50-42.00.

FEEDER PIGS: 33 HEAD. US#1&3 20-50 LBS. 12.00-30.00.

SHEEP: 36 HEAD. CHOICE LAMBS 75.00-81.00; GOOD LAMBS 70.00-75.00; SLAUGHTER EWES 21.00-30.00.

GOATS: 10.00-74.00.

10 LOADS OF HAY. ALFALFA MIX 85.00-99.00; TIMOTHY 69.00-97.00; 1 LOAD OF STRAW AT 73.00; 4 LOADS OF EAR CORN 136.00-143.00.

New Holland Horses

New Holland Sales Stables

New Holland, PA

Monday, September 9, 1996

Report Supplied By Auction

261 HEAD. LOWER TREND.

DRIVING 485.00-810.00.

RIDING 410.00-775.00.

BETTER RIDING 950.00-1250.00.

REGISTERED RIDING

965.00-1275.00, 1 AT 3025.00.

KILLERS, 1 AT 1150.00, HEAVY-WEIGHTS 635.00-910.00, LIGHT-WEIGHTS 420.00-535.00.

PONIES 130.00-400.00.

LARGE PONIES 450.00-510.00, 2 AT 625.00 AND 825.00.

COLTS 185.00-515.00.

Pennsylvania

Livestock

WAYNESBURG, PA

SEPTEMBER 12, 1996

CATTLE: SLAUGHTER COWS: Utility & Commercial 31.00-40.00; Cutter & Boning Utility 26.00-34.00; Canner & Low Cutter 20.00-29.00; Shells 20.00 & Down.

BULLS: Yield Grade 1 1500/2000 lbs, 37.00-45.00; Yield Grade 2 1000/1400 lbs, 32.50-39.00.

FEEDER STEERS: M&L 1 300/500 lbs, 40.00-60.00; 250/280 lbs, 48.00-62.00; M 600/900 lbs, 40.00-60.00; HEIFERS: M 1&L 1 300/500 lbs, 38.00-57.00; L 1 400/650 lbs, 38.00-57.00; BULLS: M&L 1 300/620 lbs, 32.00-56.00.

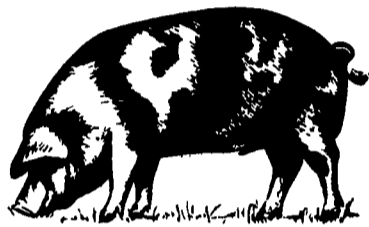
CALVES: Veal: Prime 50.00-65.00; Choice 40.00-50.00; Good 35.00-48.00; Farm Calves: #1 Holstein Bulls 90/120 lbs, few 35.00-50.00; #2 Holstein Bulls 80/100 lbs, few 20.00-40.00; Beef X Bulls & Hfrs/ Hd 20.00-55.00.

HOGS: Barrows & Gilts: #1-2 210/255 lbs, 52.00-59.00; #2-3 255/280 lbs, 52.00-59.00; Sows: #1-3 300/500 lbs, 30.00-42.00; Feeder Pigs: 1-3 15/20 lbs, 5.00-17.00/hd; 1-3 25/35 lbs, 10.00-30.00/hd.

LAMBS: High Choice 80/100 lbs, 75.00-85.00; Choice 70/90 lbs, 80.00-90.00; Feeder Lambs: Good 60.00-80.00; Sheep: 15.00-40.00; Fat Sheep: 30.00 and down.

GOATS: Large 50.00-125.00/hd; Medium 30.00-50.00/hd; Small 10.00-34.00/hd.

HORSES: Horses 42.00-70.00; Ponies 20.00-44.50.



SLAYMAKER ELECTRIC

MOTOR SALES & SERVICE

146 Penn St., Washington Boro (Rt 999)

Phone 717-684-5050 - 717-684-3940

Serving The Farm/Ag Businesses

- OTC Tools
- Animal Health Supplies
- Fly & Rat Control
- Well Pumps
- Motors

- BALDOR Motors
- Sales and Service of Chemilizer Chemical Feed Pumps
- Control Boxes

HOSE & MOTOR REPAIR
While-you-wait Service



Hydraulic Hose Assemblies
• Hi-Pressure • Air Hose • Power Washer



REPAIR and REBUILD

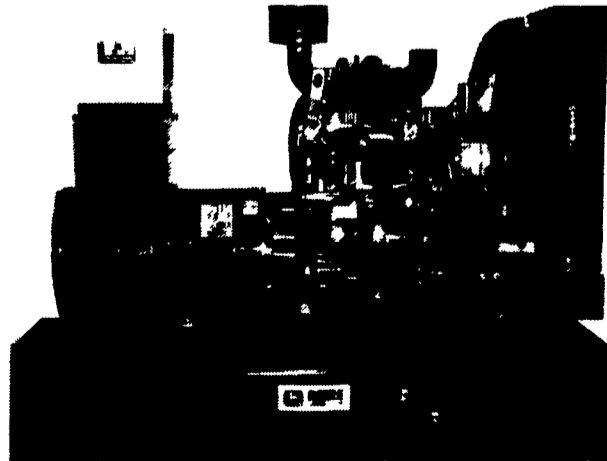
- Motors
- Hoists
- Welders
- Generators
- Control Panels

We Ship Anywhere Or Drive A Little Save A Lot

- V-Belts
- Roller Chain
- Motors
- Makita
- Pumps
- Controls

Quality Services - Reasonably Priced

GENERATORS



MARTIN ELECTRIC PLANTS • Manufacturer of: DIESEL, LP GAS, NATURAL GAS, PTO Automatic & Manual Start Systems
USED UNITS ALSO AVAILABLE

Call Us For All Your Generator Needs!

MARTIN ELECTRIC PLANTS

280 Pleasant Valley Rd., Ephraim, PA 17622-8620

800-713-7968

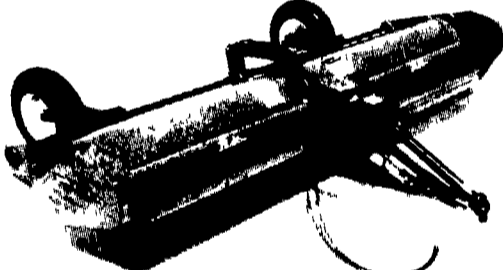
Tel: 717-733-7968 Fax: 717-733-1981



When You Buy A **Brillion**

You Get The Best

FLAIL SHREDDERS 12 Ft. And 15 Ft.

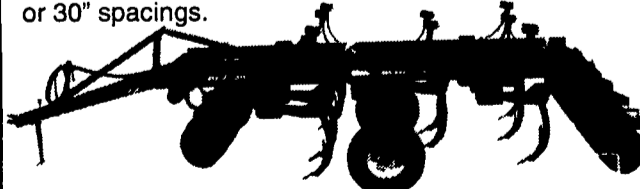


FLAIL SHREDDERS Heaviest gearbox on the market eliminates the number one cause of downtime. Available in 12' and 15'. Either cup or side slicer knives. 540 or 1000 RPM.

SOIL COMMANDERS

The Brillion Soil Commanders take Residue Management to the next generation of soil conservation efficiency.

The Soil Commanders are versatile tillage tools designed to meet the needs of the mid-size farmer who uses a 150-200 H.P. tractor. One of the keys to the machine's versatility is that it uses interchangeable shank legs and individually mounted disk assemblies instead of a disk gang. This makes possible a machine with disk assemblies on the front and rear of the frame with chisel plow or deep-ripper shanks on 15", 24", 27" or 30" spacings.



SOIL BUILDERS



SOIL BUILDERS. Optional Coulter gang can be hydraulically controlled to save maintenance dollars. 5, 7, 9, 11 & 13 shanks. Available in 2 & 3 bar.

Pennsylvania

- ADAMSTOWN Adamstown Equip. Inc.
- ALLENTOWN Lehigh Ag Equipment
- BECHTELSTVILLE Miller Equip. Co.
- CARLISLE Gutshall's, Inc.
- DOVER George N. Gross, Inc.
- EASTON Geo. V. Seiple
- ELIZABETHTOWN Messick Farm Equipment Co.
- INTERCOURSE C.B. Hooper & Son
- GREENCASTLE Meyers Implement
- LANCASTER Landis Brothers, Inc.
- LEBANON Umberger's of Fontana
- LOYSVILLE Gutshall's, Inc.
- LYNNPORT Kermit K. Kistler, Inc.
- NEEDMORE Clugston Farm Equipment
- NEW HOLLAND A.B.C. Groff, Inc.
- OAKLAND MILLS Peoples Sales & Service
- OLEY Pikeville Equipment, Inc.
- QUARRYVILLE Grumell Farm Service
- SOMERSET Summit Machinery
- TAMAQUA Charles Snyder, Inc.
- WATSONTOWN Deerfield Ag & Turf Center, Inc.
- WEST GROVE S.G. Lewis & Son, Inc.

Maryland

- FREDERICK Ceresville Ford New Holland
- New Jersey
- BRIDGETON Leslie Fogg
- ELMER Pole Tavern Equip. Sales Corp
- FAIRFIELD Caldwell Tractor & Equipment

