

Lebanon Produce Auction

Reistville, Pa.
Sept. 2, 3, 5

Report Supplied by Auction
APPLES: 4.00-5.00 1/2 BU., 6.00 BU.
BEANS: GREEN 6.00 BASKET, YELLOW 6.00 1/2 BU.; LIMA 3.00 BASKET, 1.50 PINT SHELLS.
CABBAGE: .40-.54 HEAD.
CANTALOPES: .17-.64 EACH.
CUCUMBERS: 4.50-5.00 1/2 BU.
EGGPLANT: 3.50-3.75 1/2 BU.
NECTARINES: 4.50 1/2 BU.
ORNAMENTALS: GOURDS 4.50 1/2 BU., 9.00 BU.; GOOSE 1.10-1.70 EA.; INDIAN CORN .65 BUNCH, FINGERS .75 BUNCH; CORN DOLLS 2.50; FACE PUMPKINS .35-1.70 EACH; JACK-BE-LITTLES 3.75 1/2 BU.
PEACHES: 5.50-7.50 1/2 BU.
PEPPERS: 9.00-10.00 1 1/9 BU., 4.50 1/2 BU.
POTATOES: 4.00-6.50 50 LBS.
PUMPKINS: NECK .60-90 EACH.
RED BEETS: 4.25 1/2 BU.
SWEET CORN: .40-2.00 DOZ.
TOMATOES: 2.00-5.05 25 LBS.
WATERMELONS: .40-1.85 EACH.
ZUCCHINI: 3.00-5.00 1/2 BU.
NEXT WEEK'S SALE DAYS ARE MON., TUES., THURS., AND FRI. AT 10 A.M.

Leola Produce Auction

Leola, PA

September 3, 1996

Report Supplied by Auction
APPLES: EARLY VARIETIES 2.75-4.75 1/2 BU.; GALA 5.25-8.50 1/2 BU.
BEANS: GREEN 5.75-10.75; YELLOW 7.75-13.50, BOTH BU.; LIMA 18.00-23.00 BU.
BROCCOLI: .25-.40 HEAD, 4.75-6.25 12-16 CT.
CABBAGE: GREEN 3.75-5.50 CRATE, .40-.50 HEAD.
CANTALOPES: SM. TO MED. .10-.35 EACH, LRGE. TO EX. LRGE. .40-95 EACH.
CUCUMBERS: #1 6.75-10.75 1 1/9 BU., 3.25-6.00 #2; PICKLING SM. TO MED. 6.25-9.50 1/2 BU., LARGE TO EX. LRGE. 3.25-6.00 1/2 BU.

EGGPLANT: 4.00-7.25 1 1/9 BU.
HONEYDEWS, HONEYLOPES: SM. TO MED. .25-.45 EACH.
PEACHES: YELLOW, WHITE 6.25-9.75 1/2 BU.
PEARS: BARTLETT 5.00-7.75 1/2 BU.
PEPPERS: GREEN SM. TO MED. 4.25-5.25, LRGE. TO EX. LRGE. 5.50-6.75, BOTH 1 1/9 BU.; RED SM. TO MED. 4.00-6.25, LARGE TO EX. LARGE 6.25-12.50 BU.; SUNTAN 3.25-6.75 BU.; HOT 3.75-6.50 1/2 BU.
POTATOES: RED AND WHITE 3.50-4.75 US#1 50 LBS.
PUMPKINS: NECK SM. TO MED. .50-.65, LARGE TO EX. LARGE .90-1.80 EACH.
RED BEETS: 3.75-5.25 15 COUNT, 5.25-8.00 LOOSE 1 1/9 BU.
SQUASH: SMALL PATTYPAN 7.50-14.00 10 LBS. SMALL.
SWEET CORN: .90-1.80 DOZEN.
TOMATOES: SM. TO MED. 4.00-5.50, LRGE. TO EX. LRGE. 5.50-8.50, BOTH 25 LBS.; CHERRY 3.00-4.25 12 PINT FLAT; PLUM 7.00-9.75 25 LBS.
TURNIPS: 3.25-4.25 25 LB. POLYBAG.
WATERMELON: YELLOW DOLLS .30-.50 EACH; SEEDLESS RED, YELLOW SM. TO MED. .75-.95, LARGE TO EX. LRGE. 1.00-2.00 EACH; CRIMSON .60-1.20 ASSORTED SIZES; SANGRIA SM. TO MED. .45-1.00, LRGE. TO EX. LRGE. 1.10-1.90.
ZUCCHINI: YELLOW AND GREEN SM. TO MED. 7.00-8.50; LARGE TO EXTRA LARGE: 4.00-5.75 1/2 BU.
ORNAMENTALS: JACK-BE-LITTLES 6.25-7.75 1/2 BU.; GOURDS 5.00-7.50 1/2 BU.; GOOSE GOURDS .35-.75 EACH; INDIAN CORN 1.00-1.45 BUNCH, FINGERS .35-.55 BUNCH.
FLOWERS: MUMS 1.50-2.10 EACH.
SALE DAYS MONDAY THROUGH FRIDAY AT 8:30 A.M.

Greencastle Livestock

Greencastle, Pa.

Report Supplied by Auction
September 2, 1996
SLAUGHTER CATTLE RECEIPTS: 336 HEAD.

SLAUGHTER STEERS: 81 HEAD, STEADY TREND. HIGH CHOICE AND PRIME 2-4 68.00-71.75; CHOICE 2-3, 950-1075 LBS. 60.00-67.50; CHOICE 2-3, 1075-1375 LBS. 61.00-67.50; CHOICE 2-3, OVER 1375 LBS. 58.00-62.75; CHOICE 4, ALL WEIGHTS 60.00-65.00; SELECT AND CHOICE 1-2, 950-1100 LBS. 54.00-60.50; SELECT AND CHOICE 102, 1100-1375 LBS. 54.00-62.00; SELECT AND CHOICE 1-2, OVER 1375 LBS. 50.00-60.00.
HOLSTEINS CHOICE 2-3, 1050-1450 LBS. 54.00-58.15; SELECT 1-2, 1050-1450 LBS. 45.00-53.00.
SLAUGHTER HEIFERS: 18 HEAD, STEADY TREND. CHOICE 2-3, SHEEP AND LAMBS: 107 HEAD, STEADY TREND. CHOICE 80-100 LBS. 74.00-90.00, 100-120 LBS. 70.00-76.00; 120 AND OVER 60.00-69.00; MEDIUM TO GOOD ALL WEIGHTS 70.00-78.00; LIGHT LAMBS 80.00-96.00; CULL LAMBS, NONE.
SHEEP: EWES LEAN 34.00-42.50; EWES FAT 25.00-30.50; YEARLINGS 45.00-50.00; BUCKS 22.00-29.00.
GOATS: 201 HEAD, SMALL 18.00-36.00; MEDIUM 37.00-60.00; LARGE 60.00-85.00; FEW BIG BILLIES TO 100.00.
HOGS, SHOWS AND BOARS: 102 HEAD, 3.00 LOWER TREND. 210-250 LBS. 52.00-54.50; 250-260 LBS. 51.00-53.50; 260-270 LBS. 51.00-53.50; 270-300 LBS. 46.00-51.00.
LIGHT HOGS 140-180 LBS. 40.00-45.00; 180-210 LBS. 44.00-49.00.
SOWS STEADY. GOOD SOWS UNDER 400 LBS. 40.00-45.50, OVER 400 LBS. 45.00-52.75; CULL SOWS, ALL WEIGHTS, 39.00 AND DOWN.
BOARS: STEADY TREND. 180-210 850-1000 LBS. 55.00-62.00; CHOICE 2-3, 1000-1250 LBS. 59.00-66.75; CHOICE 4, ALL WEIGHTS 58.00-64.00; SELECT AND CHOICE 1-2, 850-1000 LBS. 51.00-55.00; SELECT AND CHOICE 1-2, 1000-1250 LBS. 54.00-59.00.
HOLSTEINS CHOICE 2-3, 1000-1350 LBS., NONE; SELECT AND CHOICE 1-2, 1000-1350 LBS. 40.00-45.00.
SLAUGHTER BULLS: 48 HEAD, TREND 2.00 LOWER. YG#1, ALL WEIGHTS 39.00-44.75; YG#2, ALL WEIGHTS 34.00-38.75.

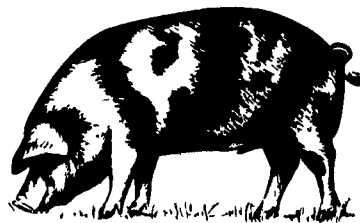
Lancaster Farming, Saturday, September 7, 1996-A15

BULLOCKS: NONE. CHOICE 1-3 950-1150 LBS. NONE; CHOICE 1-3 1150-1375 LBS. NONE; SELECT 1-2 950-1250 LBS. NONE.
COWS: 189 HEAD, TREND 1.00 LOWER. BREAKING UTILITY AND COMMERCIAL 34.00-39.00; CUTTER AND BONING UTILITY 31.00-36.00; CANNER AND LOW CUTTER 30.00 AND DOWN.
STOCKER AND FEEDER CATTLE RECEIPTS: 54 HEAD, STEADY TREND. BEEF TYPE STEERS 200-400 LBS. 48.00-55.00, BULLS 40.00-53.00, HEIFERS 34.00-42.00; 400-600 LB. STEERS 47.00-57.00, BULLS 42.00-49.00, HEIFERS 40.00-46.00; 600-800 LB. STEERS 50.00-55.00, BULLS 37.00-44.50, HEIFERS 42.00-49.00; 800-975 LB. STEERS 51.00-56.50, BULLS 38.00-46.00, HEIFERS, NONE.
HOLSTEINS AND DAIRY CROSS 200-400 LB. STEERS 31.00-35.00, BULLS, NONE; HEIFERS, NONE; 400-600 LB. STEERS 31.00-34.00; BULLS, NONE; HEIFERS, NONE; 600-800 LB. STEERS 31.00-34.00, BULLS, NONE; HEIFERS, NONE; 800-975 LB. STEERS 33.00-36.00, BULLS, NONE; HEIFERS, NONE.
CALVES: 578 HEAD, TREND STEADY TO HIGHER. CHOICE 150-300 LBS. 50.00-72.00; GOOD 150-300 LBS. 40.00-55.00; GOOD 100-150 LBS. 30.00-45.00; GOOD 80-100 LBS. 20.00-35.00; STANDARD 80-100 LBS. 15.00-25.00; STANDARD 80 LBS. AND DOWN 15.00 AND DOWN.
CALVES RETURNING TO THE FARM, STRONGER TREND. HOLSTEIN BULLS OVER 100 LBS. UP TO 70.00, UNDER 100 LBS. UP TO 67.50; HOLSTEIN HEIFERS OVER 100 LBS. UP TO 130.00, UNDER 100 LBS. 110.00; BEEF TYPE BULLS, OVER 90 LBS. 65.00.
LBS. 37.00-40.00; 210-260 LBS. 38.00-41.50; 260-300 LBS. 35.00-39.00; 300 LBS. AND OVER 36.50-38.50.
SALE EVERY MON. AT 2 P.M. AND EVERY THURS. AT 1 P.M. HAY AND

STRAW EVERY MON. AND THURS. AT 11:30 A.M. SPECIAL FEEDER CATTLE SALE FRIDAY, SEPT. 6 AT 7:15 P.M.
ANNUAL BEEF AND PORK BARBECUE MONDAY, SEPT. 9, 11 A.M.-8 P.M.

Jersey Shore Livestock Market, Inc.

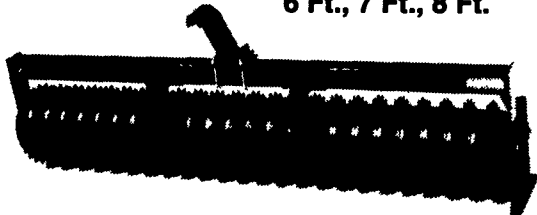
Auction every Thursday at 4:00 p.m.
Jersey Shore, Pa.
Report supplied by Auction
Thursday, Sept. 5, 1996
RETURN TO FARM CALF 60.00-150.00.
GGOOD VEAL: 30.00-59.00.
COMMON VEAL: 8.00-29.00.
CHOICE STEERS: 65.00-71.75.
SELECT STEERS: 60.00-64.00.
COMMON STEERS: 52.00-59.00.
COMMERCIAL COWS: 33.00-40.00;
A FEW BEEF TYPE 46.00.
CANNERS-CUTTERS: 24.00-32.00.
SHELLS: 15.00-23.00.
CHOICE HEIFERS: 64.00-69.00.
SELECT HEIFERS: 60.00-63.00.
COMMON HEIFERS: 39.00-59.00.
GOOD FEEDERS: 35.00-50.00.
COMMON FEEDERS: 20.00-34.00.
BULLS: 33.00-38.00; A FEW 50.50.



Brillion

When You Buy A **Brillion** You Get The Best

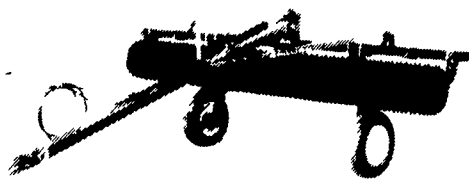
PP PULVERIZERS 6 Ft., 7 Ft., 8 Ft.



This model pulverizer is designed for use with CAT. 1, 3-point hitch tractors. They are available with your choice of five roller wheels. 16 1/2" notched, 16 1/2" crowfoot, the 20" notched ductile iron wheel, 18" smooth, and 22" flat.

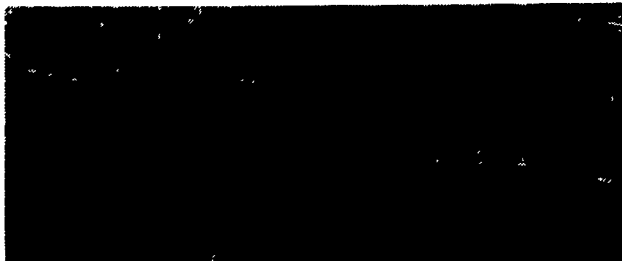
Also Avail. As Pull Type

P-SERIES TRANSPORT PULVERIZERS 10 Ft. to 18 Ft.



Rotary Frame Pulverizers; New PT10 Series Transport Concept. Machine weight is hydraulically rotated over the wheels for transport. This reduces draw bar hitch weight considerably and provides ample clearance for transport. Also Available As Pull Type.

X-FOLD PULVERIZERS 19 Ft. to 46 Ft.



The X-Fold pulverizers are designed to meet the needs of today's larger acreage farmers...and Brillion offers them in two models and 11 sizes from 19' through 46'. Now available with 20" Ductile Rollers.

Pennsylvania

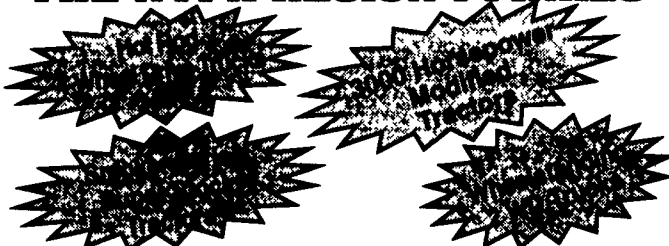
- ADAMSTOWN Adamstown Equip. Inc.
- ALLENTOWN Lehigh Ag Equipment
- BECHTELSVILLE Miller Equip. Co.
- CARLISLE Gutshall's, Inc.
- DOVER George N. Gross, Inc.
- EASTON Geo. V. Seiple
- ELIZABETHTOWN Messick Farm Equipment Co.
- INTERCOURSE C.B. Hooper & Son
- GREENCASCADE Meyers Implement
- LANCASTER Landis Brothers, Inc.
- LEBANON Umberger's of Fontana
- LOYSVILLE Gutshall's, Inc.
- LYNNPORT Kermit K. Kistler, Inc.
- NEEDMORE Clugston Farm Equipment
- NEW HOLLAND A.B.C. Groff, Inc.
- OAKLAND MILLS Peoples Sales & Service
- OLEY Pikeville Equipment, Inc.
- QUARRYVILLE Grumelli Farm Service
- SOMERSET Summit Machinery
- TAMAQUA Charles Snyder, Inc.
- WATSONTOWN Deerfield Ag & Turf Center, Inc.
- WEST GROVE S.G. Lewis & Son, Inc.

Brillion

BUCK
MOTORSPORTS PARK

THE PLAYGROUND OF POWER
SATURDAY, SEPT. 14TH

THE BUCK PULL-OFF THE NTPA REGION I FINALS



4 - Big Classes Plus The Region I Garden Tractor Finals @ 6:00 PM
The Last Truck & Tractor Pull of the 1996 Season!
Sponsored by Lancaster Ford Tractor

Adults \$10.00
Children 5-12 \$5.00
Children Under 5 - FREE

GATES OPEN AT 5:00
EVENT STARTS AT 7:00 SHARP

For More info Call Office (717) 859-4244
Track (717) 284-2139
1-800-344-7855

BUCK MOTORSPORTS PARK 10 miles S. of Lancaster on Rt. 272

SEE YOU AT THE BUCK!



"A strong, prudent board of directors challenges management and staff to seek the greatest return on our investment in ADC, creating the highest net return to its members back on the farm."

—Richard & Janet Kriebel
Benton, PA

ADC Is the Place To Be

A high net return and a strong board of directors – the outstanding benefits that Richard and Janet Kriebel refer to – are among the strengths of the premier dairy cooperative in the region
Atlantic Dairy Cooperative has a 78-year history of excellent service to its members. Financially strong, ADC guarantees a market for all member milk and excels in maximizing returns. ADC is a leader in providing equity payments, quality bonuses and over-order premiums to members.

Nearly 4,000 dairy farmers agree that "ADC is the Place to Be".
For free information on how you can secure the future of your dairy farm operation, write or call

Atlantic Dairy Cooperative
1225 Industrial Highway
Southampton, PA 18966
1-800-645-MILK

