

**35 TRUCKS & TRAILERS**

**1986 Ford F250**  
4x4, 44K  
**1993 Dodge W250**  
4x4 Diesel, 5Spd., AC, PW, C, PL, Tilt  
**1996 Ford F150**  
18,000, A, AC, Cruise, Tilt, PL, PW  
**8 CLUB CABS 96-97**  
Diesel & Gas

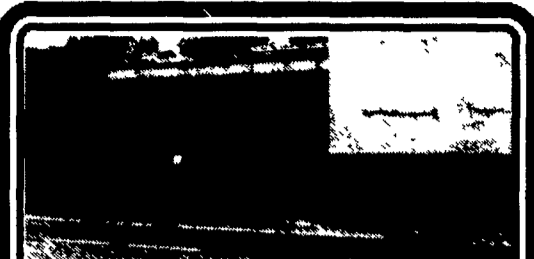
**ASK FOR MILTON HESS**  
Certified Truck Specialist  
**717-367-6644**  
**717-653-6667**  
Elizabethtown, PA

Fruehauf 25-ton lowboy trailer with heavy duty winch, \$5500 OBO. 717/435-5188.

Tandem axle truck and trailer for sale, ready to work. 717/354-5310.

**WANTED: 1970's 2010 IHC Fleetstar tandem axle gas, need rears, 5.37 ratio. Will consider buying whole truck. 717/328-9467.**

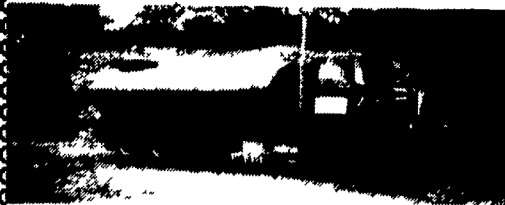
Int 1981, 1600 series dump truck, 13,000 orig miles, \$3500. (410)823-2640



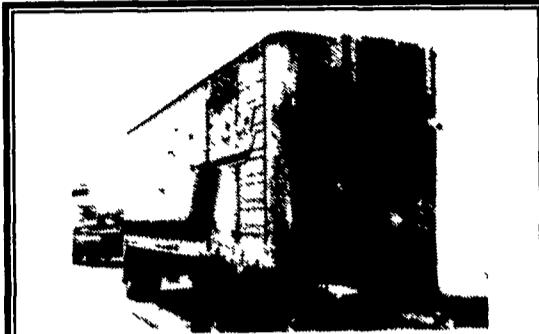
**1980 MUV-ALL Lowboy Trailer #30,000**  
Load Capacity, Self Contained Hydraulic Unit, Hydraulic Winch, Beavertail And Landing Gear, Trailer Is In Excellent Shape With Good Tires and Brakes. Asking \$6500.

Please Call **Fox Transportation**  
Hometown, PA **800-922-9807**

**1978 Ford**  
54,000 GVW Hendrickson Walking Beam  
13-spd. Power Divider Rears  
3208 Cat Diesel



**New Diller 4250 Gal Tank**  
Ready to go to work  
**\$17,500**  
717-656-4114 Jake



**28 Ft. Reefer Trailer, Side Door,**  
Good Condition  
**Curry Supply Co., Curryville, PA**  
**1-800-345-2829**

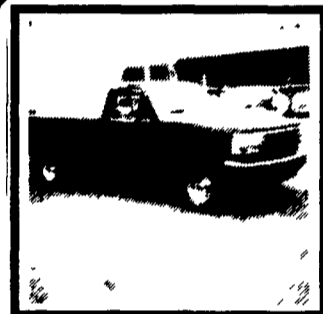
- 1995 Plymouth Neon, 4 dr., Black, 4 Cyl., 5 Sp., AM/FMst, AC, Dual Airbags, 33,754 Mi. \$9,500**
- 1995 Chevy 2500 Scottsdale, 4x4, Turbo Diesel, Dk. Green, 6.5 AT, AM/FMCas, AC, CC, 33,398 Mi. \$19,500**
- 1994 Dodge Grand Caravan SE, 7/Pass., Green, V-6, AT, AM/FMCas, AC, PW, PL, CC, Airbag, 62,416 Mi. \$12,900**
- 1994 Chevy 1500 Silverado P.U., Black, 350 V-8, 5 Sp., AM/FMCas, AC, PW, PL, CC, 15,950 Mi. \$13,900**
- 1993 Chevy Astro CL, Ext. 7 Pass, White, V-6, AT, AM/FMCas, AC, PW, PL, CC, 50,586 Mi. \$10,800**
- 1993 Geo Tracker, 2 dr., White, 4 Cyl., AT, AM/FMCas, 66,415 Mi. \$6,900**
- 1992 GMC Safari XT SLE, 7/Pass, Blue, V-6, AT, AM/FMCas, AC, PW, PL, CC, Dual-AC, Pwr-Seat, 61,109 Mi. \$10,900**
- 1992 Pontiac Grand AM SE, 2 dr., White, Quad 4, AT, AM/FMCas, AC, PL, CC, 96,370 Mi. \$5,900**
- 1992 Ford Aerostar XLT, Ext, AWD, 7/Pass, Gray/Red, 4.0 V-6, AT, Dual-AC, Loaded, 81,511 Mi. \$8,800**
- 1992 Ford Clubwagon Chateau, 7/Pass, Brown/Tan, 302, V-8, AT, AM/FMCas, AC, PW, PL, CC, Dual-AC, Airbag, Pwr-Seat, 38,942 Mi. \$13,900**
- 1994 Pontiac Sunbird LE, 2 dr., 4 Cyl., AT, AC, PDL, AM/FM, ABS, White, 61,400 mi. \$6,900**

**Brubaker's Auto Sales**  
Myerstown, PA  
717-866-5237

# TRUCKS

The Best Selection of New & Used Trucks Is At Pennsylvania's Leading Truck Source

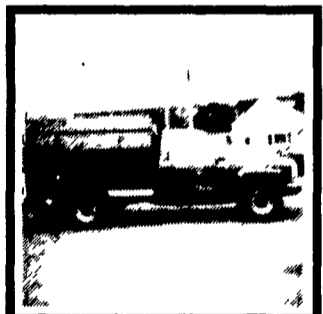
## NEW HOLLAND FORD



**1996 FORD F-150 4x4 XLT PICKUP**

5.8 liter V8 engine, automatic transmission, air conditioning, cruise control & more! #F8950

**NOW ONLY \$21,695**



**1994 GMC C3500 4x4 UTILITY BODY**

V8 engine, automatic transmission, air conditioning, AM/FM stereo cassette, Reading Walk-In Utility Body & much, much more! #F6476A

**NOW ONLY \$19,987**



**1996 ISUZU NPR 11,050 GVW**

V8 engine, automatic transmission, AM/FM stereo cassette, Morgan 14' Delivery Body. #3187

**NOW ONLY \$24,499**



**1996 FORD F-350 4x4 PICKUP**

V8 engine, 5-speed trans, power steering, AM/FM stereo, Eby 8' Flat Bed w/ recessed fifth wheel, all aluminum!! #F6761

**NOW ONLY \$24,995**

Price includes title, if applicable. Tax and tags additional. All savings include 10% off, package discounts.

**New Holland FORD & ISUZU TRUCKS**  
Route 23, New Holland PA  
**717-354-4901 • 800-642-8605**



'91 IH 4700, DTA360, 7 sp, 33GVW, New 16' Grain Dump Being Installed



'94 GMC 3500HD, 6.5 Diesel, Loaded. Only 14,000 miles



'71 Ford F600, nice 14' Grain Dump



'87 IH S-1954, DT-466, 33GVW, 6sp, Air Brakes, New 16' Grain Dump Being Installed



'68 IH 1600, V8, 4 + 2, 16' Grain Dump



'77 IH 1600, V8, 4 + 2, 14' Steel Dump



'84 Ford LN7000, 3208 Cat, 5 & 2 Air Brakes, 33GVW



'83 IH S-1654, 6.9L Diesel, 14' Steel Contractors Dump Being Installed

'82 IH F-4370 400 Cummins, 13 sp, Tandem, New 20' Grain Dump & Tarp

'91 IH 4700, C + C, DT 360, 5+2, 29 GVW

'92 IH 4700 C + C, DT-360, 5+2, 29 GVW

'88 Ford LN900 tandem tractor, 315 Cummins, 9 sp

'89 Volvo-White tandem tractor 315 Cummins, 9 sp

'84 Ford LN8000, Cat, 5+2, air brakes, new tires, heavy - frame

'88 IH S-1954, 10' dump, 33GVW, 5+2, air brakes, clean

'83 Freightliner sleeper, tandem tractor, 300 Cummins

'81 Mack F-785T S/A tractor, 237, 5-speed

(2) '91 IH 4700, 24' Vans, lift gates, excellent, 33 GVW, DT, 5+2, AC

'74 IH 1700, 9' stone dump, 5+2, one owner

'73 IH 1600, 14' dump, 345, 5+2, PS

'90 Chev C-30, 1-Ton Utility Truck, 454, Loaded

'82 IH 9670, 28' van, air ride, 6V-92, 9-speed

'87 Ford F-350, 10' Flat, tool box, 460, 4-sp

'84 GMC 7000, 366, 5-sp, C + C

**"50" Used Trucks and "40" Trailers To Choose From**

**Reichs Ford Truck & Tractor**

8016 Reichs Ford Rd. Frederick, MD 21704

**(301)662-7622**