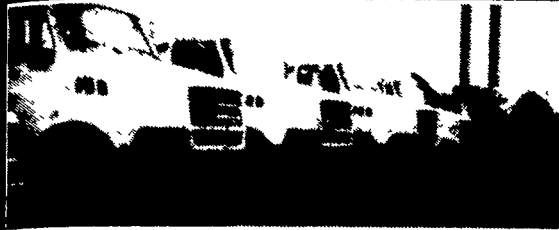


KTS - LOOKING FOR OUTSTANDING VALUES? CHECK-OUT THESE TRUCKS!



New 1997 Ford 8513's in stock
Various - Horsepowers, Wheelbases & GVW's



1989 Ford LN 8000, 178 L
Diesel, 210 HP, 5&2 speeds, Air brakes, 24 ft flat bed body w/steel bulkhead



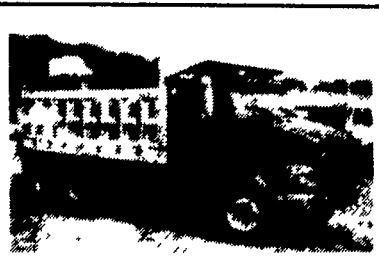
1990 IHC 4700, DT360 5-Speed,
24,500 GVW, 22 ft., Van Body w/Lift Gate, A/C



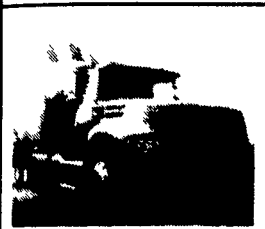
1990 Ford LN 7000, 6.8 170
HP Engine, 30,000 GVW, 24 ft. Van Body w/Lift Gate



1996 Ford LT9513, 208" wheelbase, 18's
& 46's, 3406 CAT, 455 HP, Loaded



1996 Ford LT9513, 208" WB, 18's & 46's, 11L
Detroit, 365 HP, Loaded 17 1/2 ft. Bed, R/X Alum. Dump Body, Lift Axle



1995 Ford LTLA 9000; 470
CAT, Super 10 Trans; Air Ride; All The Bells And Whistles. Call for Serious Discount!



1991 Navistar Single Axle
Tractor L-10 270 HP, 9-speed, 12,000# Front Axle, 20,000# Rear Axle, PS, AC, Air Dryer, Full Air Fanning, Low Miles

DUE IN

- 89 KW S/A Tractor
- (2) 92 Mitsubishi 16 ft. Vans, C/O's, PS, A/C
- 88 IHC, DT466, 22 ft. Reefer Body, 7-Speed, 33,000 GVW

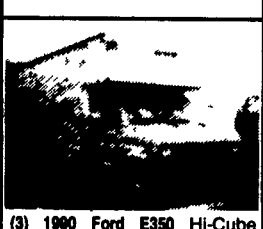
THESE TRUCKS MUST GO! BLOW-OUT PRICES



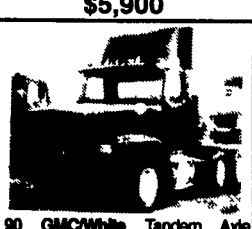
88 Volvo White, S/A, 3306 CAT,
9-Speed, A/C, Heated Mirrors, Air Dryer
\$9,900



1988 Ford CF 7000 Ford Diesel
Engine, 5-Speed Trans., 2-Speed Rear, 24 Ft Van w/ Side Door and Power Lift Gate
\$5,900



(3) 1990 Ford E350 Hi-Cube
Vans, w/front Peak, 460 Engine, AT, A/C, New State Insp., 15 ft Bodies, Walk Ramp Tow Bar
\$9,750 each



90 GMC/White Tandem Axle
Tractor, Series 60 Detroit 350 HP, 9-Speed Trans, PS A/C Full Fanning, 12,000 FA, 38,000 RA, Deluxe Interior Alum. Fuel Tanks
\$15,000

Mack R-Model Tractor & Aluminum 30' Dump Trailer, both tandem axle, V8 diesel maxodine engine, 265,000 miles, excellent running condition. Upper Bucks Co. 215/536-8624.

Phillips 18' bumper hitch stock trailer, good condition, \$1700. Montgomery Co. 215-256-8382.

Tailgate 1991 Ford F150 XLT, like new, blue, \$100. (717)871-9522.

'94 Ford XL F150 HD, 300
EFI, 5 spd, PS, PB, AM-FM, dual tanks, 6,250 GVW, new radials, excellent condition, \$9,900. 717-783-2673



'76 GMC 6000 Cab & Chassis
Truck is fair - Engine is very good - 350 H.D. (4 bolt mains)
\$975



'66 Peterbilt Model 352
250 Cummins, 5 Speed Trans., Eaton "3 Speed" Rears, Steel Frame, Air Ride - Complete except fuel tanks
\$1,900

GERHART EQUIPMENT CO.
910 Brunnerville Rd.
Lititz, PA 17543
717-626-8544

KEYSTONE FORD TRUCK SALES

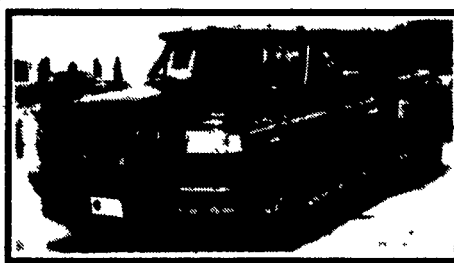
470 Penhar Rd., I-83 at 322 East, P.O. Box 4194, Harrisburg, PA 17111

(717) 564-6661 or (800) 669-6235

Mark Vlls • Pickups • Broncos • Stake Body • Crew Cabs

Contours • Aspires • Diesel Pickups • Mustangs • Thunderbirds

Explorers • Grand Marquis • XLTs • Custom Vans



Great Selection F250's & F350's
Supercab & Crew Cab
Power-Stroke Diesels
In Stock



'92 JEEP WRANGLER
Soft Top, 4.0, 5-Speed, 31,000 Miles
#P2785
NOW ONLY \$14,499



'94 FORD F250 4X4
XLT, 351, AT, A/C, 23,000 Miles,
#P2750
NOW ONLY \$20,999



'94 CHEV. K2500 4x4
Short Bed, 6.5 Turbo Diesel, Silverado,
37,000 Miles, #P2757
NOW ONLY \$23,999



'94 FORD F150 SUPER CAB
Long Bed, 4x4, 302, AT, A/C,
16,000 Miles, #P2768
NOW ONLY \$21,499



'95 FORD WINDSTAR
GL model, only 24,000 miles.
#P2696
Was \$18,999 NOW ONLY **\$17,699**



'95 FORD BRONCO 4X4
Eddie Bauer, 27,000 miles,
#1900A Was \$23,999.
NOW ONLY **\$21,899**



'95 FORD EXPLORER 4X4
XLT, Loaded, 17,000 miles, #3105A
Was \$23,999 NOW ONLY **\$22,799**



'97 FORD F250 CREW CAB
7.3 Power Stroke Diesel,
5-Spd., XLT, Loaded



'96 FORD F250 4X4 WORK TRUCK
V8, Automatic, XL Pkg
Was \$23,827 **BLOW OUT \$21,999**



MINIVAN SALE
Get the Ford Aerostar, Windstar or Mercury Villager and with this Ad you can Purchase at **DEALER INVOICE**



'96 FORD F250 4X4
Reg Cab, 351-V8, XLT, Automatic, #1625
Was \$27,949 NOW **\$25,999**

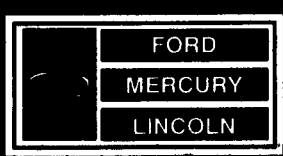


'94 FORD RANGER SUPER CAB 4X4
XLT, only 25,000 miles. Was \$17,999
NOW ONLY \$16,499



'97 MERCURY MOUNTAINEER 4X4
Loaded Sport Utility, V8 Engine, Automatic, #3052 - NICE -

Unless the Chapman Emblem is on Your Car or Truck... You Probably Paid Too Much!



LEBANON

A Division of THE CHAPMAN AUTO GROUP

-20th & CUMBERLAND STS. - RT. 422 WEST

9-9 DAILY, 9-5 SATURDAY • SHEEHY HOTLINE (717) 272-7671 OR 533-5293

PARTS DEPT. OPEN
DAILY 8-5
SAT. 8-12
717-273-8168

Mystiques • Cougars • Continentals • Town Cars • 4x4s • Rangers