

'88 Ford tri-axle w/95 Prentice 120C log loader, good condition. 717-484-2708.

'88 Super Duty F450, Eby cattle box, hoist, garage kept, good tires, low mileage. 717-278-2989.

'89 Ford XLT Lariat, F150, super cab, 302 EFI, 5 spd, PS, PB, air, AM-FM, dual tanks, 84,000 one owner miles, new radials, blue, excellent condition, \$9,900. 717-733-2873

1989 GMC Topkick, dependable, good condition, runs well, \$15,000 OBO. 610/967-2181.

1985 White Conv., 400 Cat, overhauled, twin screw, airride, 13sp, sleeper tractor, \$11,950 OBO. 717-733-6642.

1986 Beaville Window van, 97,000 mi., loaded, rear air, good cond, \$3900. (717)369-4115

1987 Chevy C30, 454, air, 12' bed, setup for gooseneck, \$7900. 717-345-4882.

'71 R-Model Mack, good condition, \$4000; '68 Rodgers Log trailer, \$2500. 301-724-4730.

'81 Ford 150 4x4 pickup, 300-6 cyl., 4-spd, rough runs inspected, \$1900. 717/374-1958.

'84 Ford Supercab 6.9 diesel dually 4x4, 4-spd, PWPL, AC, CC, \$8000. 610/932-5576.

'85 IH, 16' steel flatbed, 7.3D, 5+2 speed, PS, PB, very good, \$7500. 717-256-3355.

'90 GMC SLE 1500 Suburban, 350 FI, auto, PS, PB, PW, PDL, cruise, tilt, dual air, privacy glass, AM-FM cassette, 8 passenger, 56,000 one owner miles, blue & silver, excellent condition, \$12,900. 717-733-2873

'91 Ford, 350, dual wheels, fibreglas utility, engine mounted air compressor, 3,000 lb. bumper crane, 351 auto, air, cruise, tilt wheel, AmFm, 88,000 miles, \$11,500 OBO. (717)284-2515.



1980 GMC Brig
Detroit Diesel - 10 speed fuller trans. Stoltzfus spreader box - change from spreading damp lime to dry lime in five minutes. New PA inspect - new 1100 - 22.5 recaps. A-1 Condition
\$10,000 OBO
610-593-2987

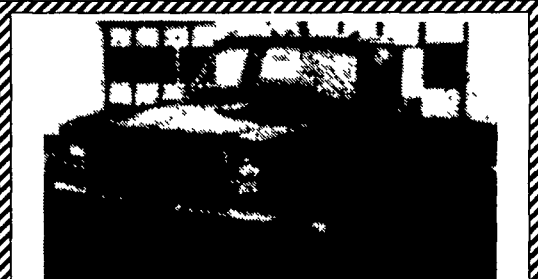
1989 Super Duty Ford 14,500 GVWR; 7.3L diesel eng; 5-speed; 12' Supreme Insulated Van Body; Kemlite Lined; alum treadplate floor; curbside door; rear barn door; carrier 'Skylark' Reefer w/3Phs. standby; 93,000 miles, MD or PA inspected, \$11,900. 1-800-296-1707 or 1-301-733-1707

1987 Trail King TK90, RGN, double drop, 3 axle, trailer, 46'L plus 5' w/3rd axle on, air ride, outriggers, 102W, new cost '87 \$43,000 will sell \$19,500 OBO. 717-464-2874.

1985 Peterbilt Tractor, good condition, \$12,000 OBO. 610/967-2181.

1985 Int9670, 350 Cummin, 9speed Tandem, long wheel base, 28 Eby double deck cattle and hog body. (717)437-2348

1985 one ton chevrolet w/10' all alum. cattle body, good cond, \$4800. (410)392-5749



1986 GMC 3500, Dual Wheel, Cab & Chassis, 350 4-Speed, PS, PB, 60-Inch Cab To Axle, 10,000 GVW, 41,000 Orig. Miles, Red, Like New

\$8,900

A&J Auto Sales

798 E. Main St., Ephrata, PA 17522
717-733-2873

COCKRELLS AUTO SALES
5270 East Trindle Rd. Mechanicsburg, PA
717-766-4227

TRUCK SPECIALS

 88 CHEVY 1500 - 8' BED Auto AC PS PB 6 Month/6,500 miles Warranty \$6,380	 87 3/4 TON GMC 4X4 Red & White Auto AC Fully Equip \$7,990
 89 DODGE DAKOTA 4x4 SPORT 6 cyl AC 6 Month/6 500 Miles Warranty \$6,980	 93 NISSAN EXT. CAB 4x4 6 cyl AC Only 30 000 Miles 6 Month/6 500 Miles Warranty \$14,900
 90 NISSAN EXT. CAB 4x4 AC Low Miles 6 Month/6 500 Miles Warranty \$10,890	 85 CHEVY BLAZER 4x4 Auto AC V8 6 Month/6,500 miles Warranty \$5,980

OVER 100 CARS & TRUCKS IN STOCK

LEFEVER BROS. CHEVROLET GEO
CHEVY TRUCKS

YOUR DIRECT LINE TO GENUINE GM PARTS

(800) 533-3837

When you call the number listed above, you'll reach our wholesale parts specialists, who can help you keep your GM repair work moving quickly.

Ask about:

- Specializing in GM Medium Duty Trucks, Current and Obsolete.
- \$500,000 Parts Inventory.
- Parts Locator for Those Hard to Find Items.
- We Ship Anywhere, Local Delivery Available.
- Experienced, Knowledgeable Personnel.

Mon., Tues., Thurs., Fri. 7:30 a.m.-4:30 p.m.
Weds. 7:30 a.m.-8:30 p.m.
Major Credit Cards Accepted

(717) 432-9697
Quality Dealer Since 1921
406 U.S. Rt. 15, Dillsburg, PA 17019

GM Goodwrench Service

Kodiak Chevy Trucks CAT DIESEL POWER



15 Ft. Alum. Dump Body 72" Sides; With Blower, Good Condition
Must Sell! **\$4,500 or Make Offer!**
Curry Supply Co., Curryville, Pa.
1-800-345-2829

Frederick THE TRUCK PLACE

CENTRAL PA'S LARGEST GM DEALER!

OVER 200 NEW AND USED TRUCKS IN STOCK!

8-1 TON DUALYS IN STOCK

NEW 95 & 96 EXTEND & CREW CAB DUALYS IN STOCK

'90 FORD F250
w/Horseshoe Service Body, 351, V8, AT, A/C

USED TRUCKS

- 95 Chev C1500, AT, A/C, PW, PL
- 95 Chev, K1500 Cheyenne, 4x4, V8, AT, A/C
- 95 Chev K1500 Z71, 4X4, V8, AT, PW
- 95 Chev Conversion Van, Hi-Top, V8, AT, A/C, TV, VCR, Cass.
- 95 Jeep Cherokee Sport, 2-Dr., V6, 5 Spd., A/C, Cass
- 94 GMC C2500 Ext Cab, SLE, V8, AT, A/C, PW
- 94 GMC K1500 4X4, V8, AT, A/C
- 94 Ford F250 4x4, V8, AT, Loaded
- 94 Ford F150 XL, V6, AT
- 94 Ford F150, V8, AT, PW, Cass.
- 94 Jeep Wrangler SE, V6, 5-Spd.

NEW & USED Large Selection of USED VANS IN STOCK
Full Size, Mini & Conversions

1 Left
1996 CHEV. 1-TON CREW CAB DUALY 4X4'S

'96 CHEV K3500
Utility Body, V8, AT, A/C, Snow Plow Prep. Pkg.

USED TRUCKS

- 94 Jeep Grand Cherokee, 4x4, AT, Leather, Loaded
- 93 Chev G20 Cargo Van, V6, AT, A/C
- 93 GMC Suburban SLE, 4x4, V8, AT, A/C, PW
- 93 Chev C1500, V8, AT, PW, Loaded
- 93 Ford Explorer LTD, 4x4, AT, Leather, Loaded
- 92 Ford F150 4x4, V8, AT, A/C
- 92 Chev K1500 4x4, V6, 5 Spd., A/C, Loaded
- 92 Jeep Wrangler Conv., 4x4, 4 Cyl., 4-Spd.

Frederick The SUPERMARKET OF TRUCKS
(717) 274-1461 • (800) 222-5523

1505 Quentin Road, Rt. 72 (South) Lebanon, PA

• BILL MORTENSEN • BILL BREault • BILL BAILEY • BOB FULTON • BARB KEEFER

LESHER Mack SALES & SERVICE
27th & Cumberland St. Lebanon, Pa 17042
Route 422 West

Used Trucks For Sale

2 NICE MH MACKS

- 1 - 1989 - MH612 E6-300, T2090 4 33R, WB 144, Steel Disc
- 1 - 1986 MH613; E6-350, T2090 4 17R, WB152 Steel Disc, 12 Ft 34 Rear

(2) 1988 Mack R-Models E6-300, T2090, 12 ft. 34 Rear, 4.42 Ratio, P/S, No A/C, Spoke Wheels
Call For Price

1985 R Model Mack; 300 Engine, 9-Speed Trans., Engine Brake, New Inspection, 169" Wheelbase
Call For Price

717-273-4535