

PUBLIC AUCTION

**ANTIQUES
& HOUSEHOLD ITEMS**

**Norman Parker Farm
146 Jacobstown-Cookstown Rd.,
Wrightstown, NJ 08562**

**Sat., Sept. 14, 1996
9 a.m. SHARP!!!**

**Selling for C. Ernest Croshaw,
Margaret O'Hagan & Others**

Oak china cabinet; oak drop leaf table w/leaves; plank bottom chair; chairs (needle point seats); mantel clock; friendship quilt; cedar chests; old high chair; Bottom rocker corner cupboard; spool stand; clothes tree; dressers; beds; old sewing machine; book case; stands; refrigerator; freezer; card table; metal wardrobe; dishes; pots/pans; B/W TV; old jars; diaries; step ladder; ext ladder; fans; Snapper riding mower; Snapper push mower; lawn chairs & cart; floor jack; hand tools; anvil; Troybilt roto tiller; air compressor; barrel back chair; couch & chairs; odd chairs; old rocker; coffee table; kitchen table & chairs; mirrors; drop leaf table; baby crib; floor lamp; old bottles; old coal stove; typewriters & stand; old wooden trunk; sleds; hay fork; hand cult; 2 man crosscut saw; 3 leg straw cutter; tins; apple picker & ladder; axe; Boy Scout books & axe; butcher tools; crocks; egg baskets & scales fert sprdr; ice tongs; hay & straw cutters; hog troughs; milk crates, boxes, butter churn (wooden); wood augers; buffet, child desk; dressers, mirror, T-back chair, table top Victrola (oak); cheese boxes; milk bottles & cans; depression bedroom set; depression glass; carnival glass; wicker baby carriage; porcelain kitchen table & chairs; PRR lantern; pictures & frames; Longaberger baskets All-star & Crisco cookie; Mccooy cookie jar (wishing well); Wheel Horse 1275 riding mower; 1983 Crown Victoria LTD police car; 1966 Chevy Impala. Miscellaneous articles too numerous to mention.

Seller or Auctioneer are not responsible for theft, injury or accident of any kind on sale premises. all articles sold "AS IS - WHERE IS"

Lunch available on premises.

TERMS: CASH OR GOOD CHECK -
NOTE: Out of state checks or IDs must be accompanied by bank letter of guaranteed payment.

**Lee Parker, Norman Parker,
Auctioneer Sale Manager
(609) 723-2010 (609) 758-8603**

RAIN OR SHINE

Public Auction Register

Closing Date Monday 5:00 P.M.
of each week's publication

COMPLETE SERVICE

AUCTIONEERING PUBLIC AUCTION

Sat., Sept. 7, 1996

**9:00 A.M.
REAL ESTATE**

R.D. #2, Millerstown, Perry County

**Selling Real Estate, Antiques And Personal Property At The Former Residence Of
Raymond L Mather.**

Directions: From Harrisburg travel North on Rts 11 & 15, just North of Liverpool turn left onto Rt. 104, continue to Rt. 35, turn left and continue to Richfield, turn left at County Line Restaurant and proceed approximately 7 miles to auction on left - signs posted.

REAL ESTATE

Large country lot on which is situated a 5 bedroom, 1 1/2 story home with spacious kitchen, large living room, very pleasant patio, paved circle drive, detached garage and workshop. The home is in very good condition. Call for showing.

TERMS: 10% Down, Balance in 45 Days.

ANTIQUES & COLLECTIBLES

Sq. Oak Table, 5 Legs; Farm Scene By Losch; D. Gray Prints; Oak Pedestal Table; Oak Chest of Drawers; 30's Dresser & Vanity; Mantle Clock; Walnut Parlor Stand; Chestnut Chest Of Drawers; Wicker Love Seat & 2 Chairs; 2 Drawer Table; 2 Quilts; Quilt Top; Cane Chairs; Cedar Chest; Sm. Cedar Chest, Dough Boy Cookie Jar; Campbell Kids Clock; Needlepoint 23rd Psalm, Watt Bowl; Elgin clock; Cast Dinner Bell; Gingersbread Cookie Jar; Pewter Plate, Tin Wind Up; Kero Lamps; One Finger Lamp; Hull Vase, Misc. Baskets; Desk Lamp; Cast Fry Pans; Quilt Rack; Wash Board; Chicken On Nest; Drawer Pulls; Slat Board, Misc. Crocks; 1/2 Doz. Peanut Butter Glasses; Misc. Depression; Opalescent; Crocheted Angie, 1936 Millerstown Pennant & School Letter; Sprinkle Can, Bells; Figurines, Sm. Pitcher & Bowl; Homer Laughlin - Georgian Egg Shell China, English Village For Eight, Dynasty Service For 4, Sad Irons Buggy Wheels, Corn Sheller; Sewing Machine Base Table; Sound Of Music Program, Longaberger Baskets, Picnic Basket, Cheese Box

HOUSEHOLDS

Zenith Floor Model TV w/Remote; 11 Cu. Ft. Upright Freezer; Also Chest Freezer; QF Refrigerator; Elec. Stove, Sharp Microwave; Maytag Washer & Dryer; Large Wall Mirror, cherry 4 Pc. Bedroom Suite; Air Conditioner; Gooseneck Rocker; Singer Sewing Machine, Athena 2000; Dropleaf Dining Table And 6 Chairs; Sofa & Chair; Maple Rocker; Kneehole Desk; Dressers; Double Bed; Daneker 60" Tall Clock, Pine End Tables; Maple Bed & Dresser, Wood Kitchen Cabinet, Sewing Notions, Folding Chairs, Folding Wood Table; 4 Kitchen Chairs; Step Stool; Floor & Table Lamps; Upright Sweeper, Fan; Card Table; Cordless Phone; Afghans; Christmas Items; Ceramic Christmas Tree; Canners & Jars; Bedding & Towels; Ice Chests; Under Counter Coffee Maker; S.S. Cookware; Corningware; Electric Knife & Other Small Appliances; Vitamaster Bike; Lifestyler 3000 Auto Incline

LAWN & SHOP ITEMS

Wizard Front Tine Tiller; Cub Cadet 1882 46" Cut, Also Blade; (2) Brinley Plows & Cultivator, Homemade Air Compressor, Bench Grinder, Porch Swing; Jacks; 2 Wheel Trailer; Garage Seat Creeper; Homemade Trailer, 4" Vise; Sockets & Other Wrenches, Meat Saws, Lots Of Hand Tools; Hoses, Potato Grates; 75R-15 Tires; Lawn Furniture; Shop Vac; Step ladder; Tool Box.

**Mary Hockenbroch
Donald R. Mather**

**KENNETH E. HASSINGER
RR 02, Box 985
McClure, PA 17841
(717) 658-3536
AU-001532-L**

**NEIL A. COURTNEY
R.D. #1 Box 239
Richfield, PA 17086
(717) 539-8791
AU-002651-L**

**SAT. SEPT. 14 - Sukavin
Holstains & Ro-Vista
Holstains, 170 head. To be held
at the farm of Robert Kauff-
man, Peach Bottom, Pa.**

LANCASTER FARMING, Saturday, August 31, 1996, 527

**SAT. SEPT. 14 - 8:30AM
Outstanding valuable real
estate, antiques, collecti-
bles, HH goods, Longaber-**

**ger baskets, clocks, oak
furniture, tools, antique
cars. 411 Bunker Hill Rd.,
Strasburg, Pa. For Terence
Wesley, Miller & Siegrist
aucts.**

**SAT. SEPT. 14 - 9AM Con-
estoga Nursery, 1 1/2 miles
N. of Rt. 23 along Rt. 625 or
from Reading S. approx. 15
miles along Rt. 625. East
Earl Twp, Lanc. Co. By
Conestoga Nursery, Kline,
Kreider & Good, aucts.**

**SAT. SEPT. 14 - 9AM Real
estate, antiques & collecti-
bles, personal property,
lawn & shop items, butcher
equip. From Lewisburg
travel N. on Rt. 15 to
intersection of Rt. 193, turn
left, continue approx. 1/2
mile to Fairground Road,
property on the southwest
corner. Kenneth E. Hassin-
ger, Neil A. Courtney,
aucts.**

**SAT. SEPT. 14 - 9AM Tall
Case grandfather's clock,
butcher & box wagons,
sleighs, Berks Co. county
antiques & primitives,
butcher equip., corner cup-
board. Between Reading &
Kutztown along Rt. 222, vil-
lage of Kirbyville, Berks
Co., Pa. Morris Strauss
Estate. Ken Leiby, auct.**

**SAT. SEPT. 14 - 9AM Anti-
ques, collectibles, early fur-
niture, household, modern
furnishings, auto, garden
tractor, farm equip, tools. In
Perry Co. midway between
Kistler & Blain on Rt. 17 at
Stony Point Rd., take Rt.
850 west to Kistler, turn left
onto Rt. 17 and go 3 miles
to auction site. Helen Rice,
owner. Fahnestock's Auc-
tion Svc.**

**SAT. SEPT. 14 - 9AM 2 1/2
story frame house & 1 story
frame garage, antiques,
household goods. 1886
Water St., Washington
Boro, Manor Twp, Lanc.
Co., Pa. By Mrs. William J.
Knight. Howard E. Shaub,
auct.**

**SAT. SEPT. 14 - 9AM
Cars, tractors, trailers, 10
wheeler, equip., tools. W.
Main St. Valley View, Pa.
W. Schuykill Co. From
Interstate 81 exit 34, take
Rt. 25 W. approx 9 miles to
sale site. Phyllis P. Blch,
owner. Mark J. Jones, auct.**

REDDING AUCTION SERVICE

VALUABLE IMPROVED

REAL ESTATE

EXCEPTIONAL 85+ ACRE

FARMSTEAD

FOR DEVELOPMENT -

INVESTMENT OR FARMING

AT ABSOLUTE AUCTION

The Undersigned Trustee - pursuant to Bank-
ruptcy Court Order No. 1-96-01637 - will sell at
public auction - located taking US Route 30
between York, PA and New Oxford, PA - turn
North at square in Abbottstown, PA and go 3/4
mile on PA Route 194 (toward East Berlin) - on

THURSDAY, SEPTEMBER 26

6:00 P.M.

All that tract of land lying and being in Hamilton Town-
ship, Adams County, PA - having approx. 1300 ft.
frontage along Route 194, 50 ft. frontage on Hamilton
Drive, 50 ft. frontage on Brough Road and containing
approx. 85.48 acres.

This tract is improved with a large 68 ft. by 30 ft. L-
shaped, 2-1/2 story stone home containing - large eat-in
kitchen with built-in cupboards, large dining room, car-
peted living room w/working brick fireplace, entrance
room, hallway and 1/2-bath on first floor - master bed-
room w/wardrobe, 2-large bedrooms w/closet, small
bedroom w/closet and full bath on second floor.

Home has storage attic, slate roof, partial basement, oil
fired-zoned-hot water heat and first floor side screened
porch.

Other improvements on property are a large 105 ft. by 60
ft. frame bank barn with like new metal roof - and sever-
al other various size farm and utility buildings. Property
has several drilled wells and own septic.

AUCTIONEER'S NOTE - This farm is located in an
excellent development area, as it is located within the
York, Harrisburg, Hanover & Northern Maryland job
area, and presently has 40 public sewer permits avail-
able, with terms. Also this farm has an investment or
farming potential. Plan to see this very attractive stone
home and property to be sold.

INSPECTION OF REAL ESTATE - Appointment
Only - Call undersigned auctioneer - Ph: 717-334-6941.

TERMS OF REAL ESTATE - 10% down at time of
sale - Balance on or before 30 days - Other terms at
sale.

JAY & VICTORIA ACWORTH

Owners

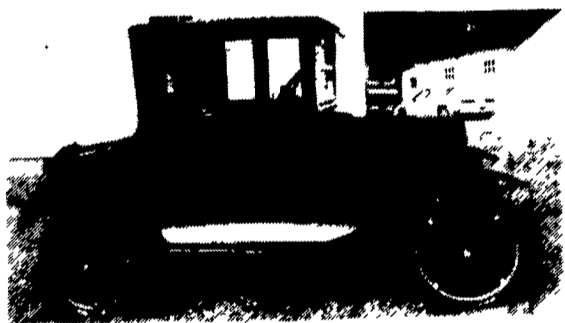
Attorney Steven M. Carr- Trustee

C. David Redding - Auctioneer

PA License No. 742-L

Gettysburg, PA - Ph: 717-334-6941

PUBLIC AUCTION



**AUTOMOTIVE TOYS &
COLLECTIBLES,
COLLECTION OF ESSO
MEMORABILIA,
FRANKLIN &
DANBURY MINT
AUTOS, ANTIQUE
AUTO ADV. &
EPHEMERA**

**COLLECTION OF
RADIATOR MASCOTS, HARD COVER BOOKS ON
AUTOS, OVER 100 ANTIQUE CAP GUNS, DOZENS OF
OLD FLASH LIGHTS, A BUNCH OF
OBSOLETE RADIOS**

10 A.M. SAT., SEPT. 14, 1996

RIDGE FIRE COMPANY

Along Rt. 23, Between Phoenixville, PA and Rt. 100

**RESTORED 1965 CORVAIR CORSA 180 HP Turbo, 4 Spd. w/22,000 Orig.
Miles.**

1925 Model T Ford Coupe, Solid, Running. Has Ruxtell, Hassler's, Speedo, Water
Pump. Actually Selling Two Complete Auctions Concurrently. Lg. Esso Sign, Texaco
Stained Glass Star, 1937 Atlantic Gas Pump, Sand Blaster, Smith Miller Trucks, Piles
of Auto Parts. Stock Up Now For Carlisle & Hershey!

10% Buyer's Premium. No Phone Bids.



TED MAURER (AU-000593-L)

Successful Auction Management

Phone 610-323-1573

or 610-367-5024

PUBLIC AUCTION

Sat., Oct. 26, 1996

9:00 a.m.

Location: Klingerstown, RD 1, PA, Upper Mahantongo Township,
Schuylkill County. Directions: From Klingerstown go east 1/2 mile on
the Klingerstown to Pitman Road, turn right onto Vista Road, 2 miles to
sale site. Approximately 45 miles northeast of Harrisburg, PA.

MAHANTONGO VALLEY FARM



Tract 1: 71 acres more or less. Approximately 45 acres under cultivation,
some woodland. Frontage on both sides of Vista Road. 2-1/2 story house.
Kitchen, double living room, spare room w/commode on 1st floor. 2nd floor,
4 bedrooms, full bath, enclosed porch. Yellow Flame coal stoker hot water
heat, bank barn and shed.

Tract 2: 15 acres more or less. approximately 3 acres tillable, some wood-
ed, frontage on Hoffman Road, no buildings. About 3 miles east of
Klingerstown, turn off the Klingerstown to Pitman Road onto Hoffman
Road.

**Note: Tracts 1 and 2 to be offered separate and in its entirety although
Tracts 1 and 2 are not adjoining.**

Inspection: phone 425-2398.

**Terms: 10% down at conclusion of bidding, balance due within 45 days.
Real estate to be offered at 12:00 noon.**

ANTIQUES - COLLECTIBLES

Coins - Household - Farm Machinery - Butcher Tools

Terms: Cash or PA Check

Food: By Salem Church

Owner: Macie M. Erdman

P.O.A.: Elaine M. Dietrich

Attorney: Roger V. Wiest

MARK J. JONES AUCTIONEER

Phone (717) 286-0052 • Lic. #AU1595-L

Jeff Dunkelberger • Lic. #AU 3043-L

