

**HOG MARKETS**

**New Holland Feeder Pigs**

New Holland, PA  
Wed., August 28, 1996  
Report Supplied by USDA  
TODAY: 420  
LAST WEDNESDAY: 582  
LAST YEAR: 580 HEAD  
COMPARED TO LAST WEDNESDAY, FEEDER PIGS 5.00-10.00 LOWER, ALTHOUGH 65 PER CENT OF SUPPLY SOLD FOR SLAUGHTER. ALL PIGS WEIGHED ON ARRIVAL AND SOLD BY THE HUNDREDWEIGHT.  
US#1-2: 40 HEAD 40-44 LBS. 78.00-92.00, WEIGHTED AVERAGE 42.45, WEIGHTED PRICE 79.73.  
US#2: 35 HEAD 22-27 LBS. 55.00-70.00, WEIGHTED AVERAGE 24.31, WEIGHTED PRICE 62.09; 28 HEAD 31-37 LBS. 76.00-80.00, WEIGHTED AVERAGE 32.71, WEIGHTED PRICE 78.87; 16 HEAD 40-43 LBS. 70.00-74.00, WEIGHTED AVERAGE 42.63, WEIGHTED PRICE 73.53; 20 HEAD 50 LBS. 66.00, WEIGHTED AVERAGE 50, WEIGHTED PRICE 66.00; 9 HEAD 93 LBS. 72.00, WEIGHTED AVERAGE 93.00, WEIGHTED PRICE 72.00.  
SLAUGHTER: 54 HEAD 33-37 LBS. 80.00-100.00, WEIGHTED AVERAGE 34.94, WEIGHTED PRICE 89.05; 73 HEAD 52-65 LBS. 78.00-95.00, WEIGHTED AVERAGE 58.47, WEIGHTED PRICE 83.88; 34 HEAD 54-66 LBS. 104.00-116.00, WEIGHTED AVERAGE 58.94, WEIGHTED PRICE 111.06; AS IS PIGS, 18 HEAD 51-66 LBS. 72.00-80.00, WEIGHTED AVERAGE 56.50, WEIGHTED PRICE 75.51.  
ALL PIGS CONSIGNED TO WED. FEEDER PIG SALE MUST ORIGINATE FROM A QUALIFIED NEGATIVE OR MONITORED HERD.

**S & J Villari Livestock Feeder Pig Sale**

Millisboro, Del.  
August 26, 1996  
Report Supplied by Auction  
406 HEAD  
20-29 LBS. 65.00-80.00; 30-39 LBS. 71.00-90.00; 40-49 LBS. 71.00-84.00; 50-59 LBS. 70.00-82.00; 60-69 LBS. NO QUOTE; 70-79 LBS. 49.00-65.00.

**Hatfield Direct**

Hatfield, Pa.  
Reports Supplied by Packer  
For Monday, August 26, 1996  
And Wednesday, August 28, 1996  
MONDAY  
TOTAL HOGS: 6180.  
LAST WEEK: 5733.  
TREND: COMPARED TO LAST MONDAY 1.25 LOWER.  
55.5%-56.4% 216-269 LBS. BASE 58.92.  
56.5%-58.4% 216-269 LBS. 59.78-60.63.  
58.5%-60.4% 216-269 LBS. 61.49-62.34.  
FEW 216-269 LBS. 63.21.  
GOOD'S RECEIVING  
MONDAY CASH: 57.75.  
WEIGHT AND GRADE AVAILABLE.  
WEDNESDAY  
TOTAL HOGS: 6298.  
LAST WEEK: 5780.  
TREND: COMPARED TO LAST WEDNESDAY: .33 LOWER.  
55.5%-56.4% 216-269 LBS.: BASE: 58.50.  
56.5%-58.4% 216-269 LBS.: 59.36-60.21.  
58.5%-60.4% 216-269 LBS.: 61.07-61.92.  
FEW 216-269 LBS.: 62.79.  
GOOD'S RECEIVING  
WEDNESDAY: NO SALE; WEIGHT AND GRADE AVAILABLE.

**Good's Hay**

Leola, Pa.  
Wed., August 28, 1996  
Report Supplied by Auction  
TOTAL LOADS: 69.  
MIXED HAY: 60.00-155.00.  
STRAW: 66.00-155.00.  
CORN: 167.00-176.00.  
ALFALFA: 33.00-125.00.  
GRASS: 70.00-100.00.  
STUBBLE HAY: 45.00-65.00.  
HAYLAGE: 44.00 BALE.  
OAT HAY: 67.00.

**Kirkwood Hay Auction**

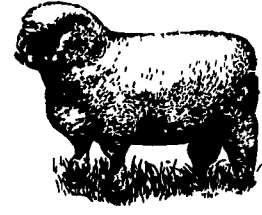
Kirkwood, Pa.  
Tuesday, August 27, 1996  
Report Supplied by Auction  
42 LOADS OF HAY.  
MIXED HAY: 1ST CUTTING 86.00-124.00, 2ND CUTTING 55.00.  
TIMOTHY: 115.00-130.00.  
ALFALFA: 1ST CUTTING 26.00-170.00, 2ND CUTTING 103.00-150.00.  
GRASS: 60.00-163.00.  
WHEAT STRAW: 64.00-112.00.  
OATS: 3.40 BU.  
SALE TIME 11 A.M.

**Dewart Hay**

Dewart, Pa.  
Monday, August 26, 1996  
Report Supplied by Auction  
HAY: 5 LOADS, 53.00-110.00.  
STRAW: 52.00.  
CORN: 3 LOADS, 148.00-156.00.  
OATS: 1.90 BU.

**Leinbach's Hay**

Shippensburg, PA  
August 24 & 27  
Report Supplied by Auction  
29 LOADS.  
ALFALFA: 81.00-100.00.  
MIXED HAY: 45.00-120.00.  
TIMOTHY: 56.00-80.00.  
BROME GRASS: 70.00-100.00.  
ORCHARDGRASS: 50.00-100.00.  
STRAW: 56.00-65.00.  
EAR CORN: 138.08-182.50.  
OATS: 1.90-2.15 BU.



**Diffenbach Auction Center**

New Holland, Pa.  
Monday, Aug. 26, 1996  
Report Supplied by Auction  
TOTAL LOADS: 98.  
ALFALFA: 82.00-145.00.  
MIXED HAY: 67.00-160.00.  
TIMOTHY: 55.00-162.00.  
CLOVER: 35.00-102.00.  
ORCHARDGRASS: 62.00-160.00.  
STRAW: 100.00-165.00.  
EAR CORN: 169.00-181.00.  
WOOD SHAVINGS: 2.50 BAG.  
OATS: 3.40.  
SHREDDED PAPER: 115.00 LOAD

**Green Dragon Hay**

Ephrata, Pa.  
Friday, August 23, 1996  
Report Supplied by Auction  
75 TOTAL LOADS.  
MIXED HAY: 23 LOADS, 57.00-200.00.  
ALFALFA: 7 LOADS, 85.00-175.00.  
TIMOTHY: 12 LOADS, 80.00-200.00.  
STRAW: 11 LOADS, 51.00-140.00.  
EAR CORN: 12 LOADS, 169.00-184.00.  
ORCHARDGRASS: 5 LOADS, 57.00-95.00.  
OATS: 4 LOADS, 2.75-3.00 BU.

**North Jersey Market**

Hackettstown, N.J.  
Report Supplied by Auction  
Tuesday, August 27, 1996  
Hay—Straw & Grain Report  
ALFALFA: 5 LOADS, 1.25-3.30 BALE.  
MULCH HAY: 1 LOAD AT .60 BALE.  
MIXED HAY: 5 LOADS, .70-1.50 BALE.  
TIMOTHY: 1 LOAD, .75 BALE.  
GRASS: 15 LOADS, .50-3.00 BALE.  
OAT STRAW: 1 LOT AT .70 BALE.  
OATS: 3 LOTS 2.75-7.00 BAG.  
SWEET CORN: 1 AT 4.00 BAG.

**Middleburg Hay**

Middleburg, PA  
Tues., August 27, 1996  
Report supplied by PDA  
74 LOADS TOTAL. 30 LOADS OF HAY.  
ALFALFA: 6 LOADS, 70.00-135.00.  
MIXED HAY: 16 LOADS, 55.00-137.50.  
TIMOTHY: 4 LOADS, 47.50-160.00.  
CLOVER: 45.00.  
ORCHARDGRASS: 3 LOADS, 57.50-130.00.  
STRAW: 4 LOADS, 50.00-80.00.  
EAR CORN: 23 LOADS, 142.50-176.00.  
BARLEY: 4 LOADS, 2.50-4.25 BU.  
OATS: 2.00-2.75 BU.

**Vintage Hay**

Paradise, PA  
Thurs., August 29, 1996  
Report Supplied by Auction  
ALFALFA: 105.00.  
TIMOTHY: 80.00.  
GRASS HAY: 74.00.  
STRAW: 104.00-115.00.  
EAR CORN: 165.00.

**Westminster Hay**

Westminster, Md.  
Tuesday, August 27, 1996  
Report Supplied by Auction  
89 LOADS.  
ALFALFA: 1.00-3.40 BALE.  
TIMOTHY: .70-2.90 BALE.  
MIXED HAY: .05-2.90 BALE.  
GRASS: .80-2.80 BALE, 14.00 LARGE ROUND.  
STRAW: 1.30-2.20 BALE.

**National Grain Market**

ST. JOSEPH, MO  
AUGUST 28, 1996  
Grain and soybean bids fell moderately to sharply lower due to favorable weather for harvest and growing crops. Wheat 4 to 7 cents lower. Corn mostly 32 to 47 cents lower. Sorghum 10 to 20 cents lower. Soybeans 7 to 12 cents lower. Wheat harvest in the US spring wheat regions are enjoying ideal conditions. Good export demand overnight, however, limited declines in wheat bids. Favorable growing weather also pressured corn bids lower and the buying basis has dropped substantially throughout the week. Profit taking was noted in both corn and bean pits today. Export News: Commodity Tonnage Del date Korea Soft White Wheat 9,200 Nov/Dec Hard Red Winter Wheat 8,500 Nov/Dec Spring Wheat 5,300 Nov/Dec The Philippines Spring wheat and Western White Wheat 14,000 Sep Taiwan Hard Red Winter Wheat 7,700 Oct Soft White Wheat 7,770 Oct Totals: Wheat 52,470 tonnes. Date Change Year ago Truck Bids: 08/28/96 08/27/96 03/30/95 Wheat: Kansas City (HRW, ORD) 4.89 dn 7 4.72-4.74 Minneapolis (DNS, 14%) 4.88 dn 7 3/4 4.80 3/4 Portland (SW) 5.09-5.14 dn 7-4 4.75-4.80 St. Louis (SRW) 4.55-4.58 dn 7 4.05-4.08 Corn, US 2 Yellow: Kansas City 4.38 dn 42 2.91-2.93 Minneapolis 3.72 3/4 up 7 2.59 1/4 Southern Iowa 3.62-4.08 dn 2-up 18 2.73-2.76 Omaha 4.23-4.58 dn 47-32 2.73-2.76 Soybeans, US 1 Yellow: Kansas City 8.14-8.15 dn 7 6.17-6.21 Minneapolis 7.98 3/4 dn 1 5.85 1/2 Southern Iowa 8.00-8.24 dn 12-8 5.97-6.02 Cent IL Processors 8.23 3/4-8.33 3/4 dn 12-7 6.10 1/2-6.21 1/2 Futures Close: Kansas City (Sept) Wheat 4.75 1/2 dn 7 Kansas City (Dec) Wheat 4.73 1/2 dn 10 1/2 4.69 1/4 Minneapolis (Dec) Wheat 4.58 dn 7 3/4 4.55 3/4 Chicago (Sept) Wheat 4.51 1/4 dn 7 4.32 1/2 Chicago (Sept) Corn 3.67 3/4 dn 2.91 3/4 Chicago (Dec) Corn 3.42 3/4 dn 6 2.90 1/4 Chicago (Nov) Soybeans 7.88 3/4 dn 7 6.16 1/2 Export Bids: Barge or rail, Port of New Orleans or North Texas Gulf. US 1 HRW Wheat, Ord. Protein: 5.13 1/2 dn 7-8 4.99 1/2 US 2 SRW Wheat: 4.73 1/4-4.75 1/4 dn 8 4.54 1/2-4.58 1/2 US 2 Yellow Corn: 4.22 3/4 dn 17 3.27 3/4-3.28 3/4 US 2 Yellow Sorghum: Rail 6.30 dn 11 5.58 Barge 6.57 dn 10-14 5.68-5.77 US 1 Yellow Soybeans: 8.50 3/4-8.52 3/4 dn 5 6.56 1/2-6.59 1/2

**CARLISLE LIVESTOCK MARKET, INC.**  
**FED and FEEDER CATTLE SALE**  
TUES. Sept. 3 & 17 7:00 PM  
Early Bird Pens Close 2 PM  
Turn South Off I-81 @ Exit 12  
Market (717)249-4511  
Evenings Jim (717)249-2359

**HORSE & TACK SALE**  
SAT. SEPT. 7  
Receiving 5 PM  
SALE 7 PM  
**Carlisle**  
LIVESTOCK MARKET, INC.  
Exit 12 Off I-81 turn South  
(717) 249-4511 or  
Evenings Jim, 249-2359

**WALTER M. DUNLAP & SONS**  
Lancaster Stockyard  
1147 Littitz Pike, Lancaster, PA 717-397-5136  
OFFER ALL CATTLE & HOG FEEDERS  
**TWO MARKETING DAYS**

Monday	Wednesday
9 AM: Goats, Slaughter Calves, Sheep/Lamb Small Calves	6 AM-NOON Hog Receiving
9:30 AM: Bulls, Heifers, Steers, Cows	<b>GRADED SOW SALE</b> 2nd & 4th TUESDAY, EACH MONTH Receiving -6 A.M. - 11 A.M.
1 PM: Hog	

**FALL FEEDER CATTLE SALE DATES**  
Wednesday, Sept. 4 and 18  
Wednesday, Oct. 2, 16 and 30  
Wednesday, Nov 6 and 20  
Wednsday, Dec 18

**PENNFIELD GRAIN BANK**  
**PENNFIELD'S HAGERSTOWN GRAIN ELEVATOR**  
(Clear Spring)  
IS NOW READY TO RECEIVE WET SHELL CORN.  
Prices Week Of 09/02/96  
Corn \$5.55 Bu.  
Soybeans \$8.10 Bu.  
Barley \$3.75 Bu.

- No Storage Charges
- Prices Updated Weekly
- Grain Bank Balance Shown On Each Invoice
- No Hidden Charges

For every ton of qualifying dairy feed purchased you will receive one ton of grain back hauled at no charge

Call 1 800 732-0467  
penncfield feeds

**Lancaster Farming**  
INDEX  
Four Sections

FEATURES	DEPARTMENTS
Franklin Hog Show..... A11	Editorial..... A10
District Jersey Parish..... A19	Farm Calendar..... A10
Allentown Dairy Show..... A20	Futures..... A16
Allentown Goats..... A22	Mailbox Markets..... B16
Allentown Sheep..... A28	Sale Reports..... B19
Northeast Holstein..... A35	Public Auction Register..... B20
Southeast District Dairy..... A32	Business News..... C 2
Arlene Wilbur..... B 2	Classified Ads..... C 9
Mini-Seminar..... B 3	
Cookbook To Help Children B12	<b>HOME AND YOUTH</b>
Somerset Dairy Show..... B14	Homestead Notes..... B 2
Martinsburg District..... C 4	Home On The Range..... B 4
Wayne 4-H Livestock..... C 5	FFA Happenings..... B 5
Tioga Livestock Sale..... C 6	Farm Women..... B 6
Northeast District Show..... C 7	You Ask, You Answer..... B 7
	4-H Happenings..... B 7
	Cook's Question Corner..... B 8
	Kid's Korner..... B10
<b>COLUMNS</b>	
Now is the Time..... A10	<b>DAIRY</b>
On Being A Farm Wife..... B 6	DHIA Focus..... A29
Family Living Focus..... B 5	Md. DHIA..... A34
All Gardens..... B11	Pa. DHIA..... D 2
Ida's Notebook..... B52	
It's Showtime..... D 2	