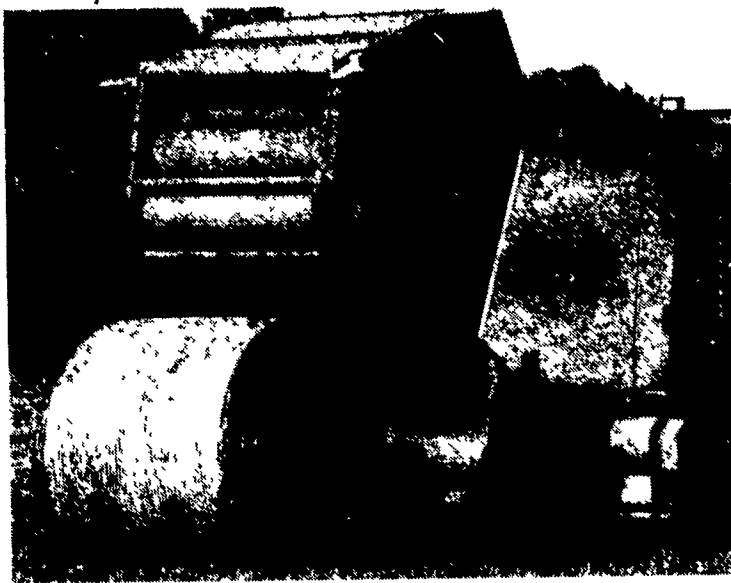


**GET THE QUALITY ROUND BALER.
GET CLAAS.**



**CLAAS
ROLLANT
ROUND BALERS**

• Fixed bale chamber with steel roller • Smooth material flow for all crops • Twine or Rollatex net wrap • Roto Cut model processes material while baling • 4' x 4' and 4' x 5' models • Pickups up to 79"

CLAAS The Harvesting Specialist

MEYERS IMPLEMENTS, INC.

400 North Antrim Way
Greencastle, PA 17225
Phone: (717) 597-2176 Fax: (717) 597-5349

USED EQUIPMENT

Ford TW-20 Tractor w/Cab	\$21,000	Ford 6 Ft Rotary Cutter	900
Ford 9600 Tractor w/Cab, Air	16,900	Woods D80 Rotary Cutter	2,000
Ford 4610 w/QT Loader	16,500	New Holland L-785 Skid Steer Loader	18,900
Ford 3000 Gas	4,900	New Holland L-553 Skid Steer Loader	14,500
Ford 9N Tractor	2,500	New Holland 519 Manure Spreader	3,500
New Holland 116 Header & Conditioner for Bi Directional Tractor	5,900	New Holland 520 Manure Spreader	3,900
New Holland 575 Balers (2)	9,900	John Deere 450 Hydro. Push Spreader	3,900
New Holland 326 Baler	8,500	Schuler BF 175 Feed Cart	3,800
New Holland 320 Baler w/Thrower	7,500	Schuler BF 175 Feed Cart - nice	4,900
New Holland 320 Baler	5,900	New Holland 352 Grinder/Mixer	2,900
Hesston 4600 Baler w/Thrower	6,500	Fricklin 213 Gravity Box w/Auger	2,000
New Holland 273 Baler w/Thrower	4,900	New Holland 890 Harvester	5,500
New Holland 855 Bale Command	8,900	Case IH 830 Forage Harvester w/Window	2,900
New Holland 853 Round Baler	7,400	IH 650 Forage Harvester w/Corn Head	1,900
New Holland 65 Square Baler	2,900	Fox 2310 Forage Harvester	4,500
New Holland 1895 w/Cab & Air, 3 Row Head (One Owner)	Call for Price	New Holland 12' Sicklebar Head	3,900
New Holland 1495 Haybine	19,500	New Holland 822 Corn Head	3,500
New Holland 1495 Haybine	7,900	New Holland 822 Corn Head	2,500
New Holland 1469 Haybine, 9 Pt Cut	9,900	New Holland 880R2 Two Row Corn Head	450
New Holland 411 Discbine	5,900	New Holland 890N3 Corn Head	2,500
New Holland 499 Haybine	7,500	Case IH Two Row Corn Head	2,900
New Holland 411 Discbine	7,500	New Holland S-717 Harvester	3,500
Hesston 1060 Disc Mower Conditioner	7,900	New Holland 717W Windrow Pickup	1,200
Gehl 2170 Mower Conditioner	8,500	John Deere 2-Row Snapping Head	2,100
Hesston 1085 Mower Conditioner	4,900	New Holland 717R Corn Head	400
New Holland 489 Haybine	6,500	New Holland 770 Harvester	1,500
New Holland 489 Haybine	5,500	New Holland 40 Blower	2,450
New Holland 489 Haybine	4,500	New Holland 30 Blower	1,250
New Holland 495 Haybine	4,500	New Holland 27 Blower	1,950
New Holland 479 Haybine	2,900	GEHL 1560 Blower	1,900
New Holland 478 Haybine	3,900	JD ATM 626 Utility Vehicle	4,900
John Deere 1209 Mower Conditioner	3,200	New Kawasaki Bayou 220	3,519
Vicon CM 240 Disc Mower	2,800	New Kawasaki Mule 1510, 4x4, Demo	7,999
Rhino Flex 15 Rotary Cutter	5,900	New Kawasaki GD700 Generator	599

SPECIAL PRICES ON KAWASAKI ATV

SEE YOUR CERESVILLE FORD NEW HOLLAND SALESMAN TODAY!!!

We honor VISA & MASTERCARD

CERESVILLE FORD NEW HOLLAND, INC.

8102 Liberty Road • P.O. Box A
Frederick, MD 21701

We ship parts UPS Fed.
Express every day.

301-662-4197 • 1-800-331-9122



NEW HOLLAND

GUNTHER HEUSSSMAN INC.

4801 S. 5TH ST., EMMAUS, PA 18049

610-965-5203

Delivery & Financing Available

#6500 bale wire in stock

WE ARE CASH BUYERS FOR CLEAN, LATE MODEL FARM EQUIPMENT

SUMMER SPECIALS

JD 3950 Harvester, Elec. Controls, Base Unit	\$6,500
JD 3940 Harvester, elec. Controls, Base Unit	\$3,850
NH 488 9' Haybine, Good Cond.	\$3,250
NH 478 7' Haybine, Good Cond.	\$3,250
NH 848 Round Baler, Very Nice	\$6,450
JD 640 Rake w/Dolly Wheel	\$850

QUALITY TRACTORS

JD 4050, 4-Post Quad Range, 2400 Hrs., Excel. Cond.
1982 JD 4240 cab, air, power shift, very nice
1970 JD 4020 Diesel, **SOLD** WF, Very Nice
1967 JD 4020 Diesel, Syncro, WF, Good Cond.
1972 JD 4020 Diesel, Syncro, Factory Cab, WF, Dual Hyds., Good Cond.
JD 2955 Dsl, Cab, Air, MFD, Hi-Lo, Excellent Condition
JD 2950 Cab, Air, Hi-Lo, Very Nice
JD 2750 Cab, Air, Hi-Lo, Dual Hyd., Very Nice
1981 JD 2640 Dsl, Hi-Lo, Ind. PTO, w/JD 146 Loader, Excellent Condition
JD 2630 Diesel, Hi-Lo, Indpt. PTO, Good Cond.
JD 2355 Diesel, Fender, Dual Hydraulic, Indpt. PTO, Good Cond.
1981 JD 2440 Diesel, Indpt. PTO, Hi-Lo, Good Cond.
JD 2150 Diesel, Cab w/Loader, Very Nice
JD 2010 Gas, U**SOLD** Loader
1976 IH 1066, Black Stripe, Cab, Air, 891 1-Owner Hrs., Like New
IH 686 Dsl, WF, 3 Pt., 2500 Hours, Very Nice
IH 1026 Hydro Fenders, Excel. Cond.
IH Super MTA, gas, power steering, original & straight
MF 245 Diesel, 1400 hrs. w/Excellent Loader

CORN PLANTERS

JD 7200 4R Dry Fert., Insec. Monitor, Excel. Cond.
JD 494, 4R, Dry Fert., Good Cond.

CORN PICKERS

NI 325 2RN, 12 Roll Bed, Late Model, Good cond.
NI 324 2RW, 12 Roll Bed, Excel. Cond.
NI 323 1R, Good Cond.

MISCELLANEOUS EQUIPMENT

JD 1210 A Grain Cart, Good Cond.
NH 352 Grinder Mixer, Good Cond.
Woods 12' Off-Set Hyd. Fold Rotary Mower
JD 506-609 Rotary Mowers
Liley 3 Pt. Fertilizer Spreader
JD 240 QuicKtatch Loader, Very Nice
Loftness 84" Heavy Duty Snowblower
NH 355 Grinder Mixer, Hyd. Drive, Good Cond.
NH 304 Scavenger Manure Spreader
Case IH 5100 18x7 Grain Drill, Grass Seed, Almost New
McKee 84" Snow Blower

CORN HEADS

JD 244 2RW	AC 430, 4RN, Black
JD 343, 3RN	AC 630 M2 or L2
JD 443, 4RN	AC Black SOLD 4RW
JD 443, 4RN, Low Tin	AC K330, 3RN
JD 443 SOLD Bath	IH 843 4RN
JD 444, 4RW	MF 1143 4RN
JD 643 HI Tin	MF 1144 4RW
	MF 1163, 6RN
	JD 643 Oil Bath

HAY EQUIPMENT

NH 311 baler, like new
Ford NH 855 Round Baler w/Bale Command, Very Nice
NH 846 Round Baler, Excel. Cond.
JD 1219 9' Mower Condition, Good Cond.
JD 337 Baler w/Ejector, Elec. Controls, Excel. Cond.
Ford NH 316 Baler w/Hyd. Belt Thrower, Excel. Cond.
Ford NH 848 Round Baler, Excel. Cond.
JD 1460 Mower Conditioner, Good Cond.
Ford NH 489 Haybine, Good Condition
Ford NH 488 9' Haybine, **SOLD**
NH 474 7' Haybine, Excellent Condition
NH 472, 7' Haybine, Excel. Cond.
NH 467 Haybine, Very Nice
New Farmco 18' Steel Side Hay Wagons
JD 660 Rake, Like New
Vicon 4 Star Hay Tedder

PLOWS

IH 720 5x18 Spring Reset
IH 710 4x18 Spring Reset
JD 145, 5x16 Trip
JD 1450, 4x18 Trip

QUALITY COMBINES

(Displayed Inside Building)

1988 JD 7720 Titan II Fully Equipped, Excel Cond.
1984 JD 7720 cab, air, hydro, low hrs., excel. cond.
1988 JD 6620 Titan II, Fully Equipped, 1 Owner, Excel. Cond.
1983 JD 6620 Diesel, Cab, Air, Hydro, 2000 Hrs., Excel Cond.
1981 JD 6620 Diesel, Cab, Air, Hydro, 4WD, 1800 hrs., Good Cond.
JD 4420 cab, air, chopper, dial-a-matic, very nice
JD 4400 diesel, cab, air, chopper, good condition
Case IH 1620 cab, **SOLD** ro, 1000 hrs., like new
1982 IH 1440 Axial Flow, Cab, Air, Hydro, 2400 Hrs., Very Nice
AC FI Diesel, Cab, Air, Hydro, Low Hrs., Excel. Cond.
MF 205 Gas, Cab, w/10' Grain Head, Excel. Cond.
JD 915 Flex Head
JD 215 Flex Heads,
JD 213 Flex Heads
MF 9115 Flex Head, Like New
JD 6600-6620 Straw Spreaders
Gleaner F2, 15' Flex Head

HARVESTERS

JD 5720 Harvester, Rotary Screen, Cab, Air Hydro, 4x4, Excel. Cond.
JD 3970 Harvester, w/Electrical Controls, Choice of Heads, Good Cond.
JD 3950 Harvester, Elec. Controls, w/2RN Green Corn Head, Excel. Cond.
JD 3940 Harvester w/Electrical Controls, Good Cond.
JD 7' Pickup Head
JD 2RN & 3RN **SOLD** Heads w/Slip Clutch
NH 770 2RN Corn Head
JD 6' Direct Cut Head
JD 3RW Corn Head

TILLAGE

Krause 18' Hydraulic Wing Fold Disc.
Brillion 21' Hyd Fold Packer, Excel. Cond.
Brillion 15' Roller Harrow, Good Cond.
Brillion 14' Tr **SOLD** Packer, Excel. Cond.
JD 15', 950 Roller Harrow, Excel. Cond.
JD BWF 12' Rock Flex Disc, Excel. Cond.
Ford 241 10' Disc, Excel. Cond.
Glence 12' Rock Flex Disc, Good Condition
IH 496 23' Rockflex Disc, Excel. Cond.
JD 1610 8&9 Shank Pull Type Chisel Plows
Brillion 14' Roller Harrow, Good Cond.
IH #14 5 Shank V-Ripper - spring reset
JD AW 12' Disc, Excel. Cond.
Miller 12' Offset Disc, Good Cond.

NEW HOLLAND STACK WAGONS

NH 1003 bale wagon, 80 Bale Capacity, Excel Cond.
NH 1033 Bale Wagon, 105 Bale Capacity, Good Cond.
NH 1012 Bale Wagon, Single Bale Unload & Retrieve, Excel. Cond.

