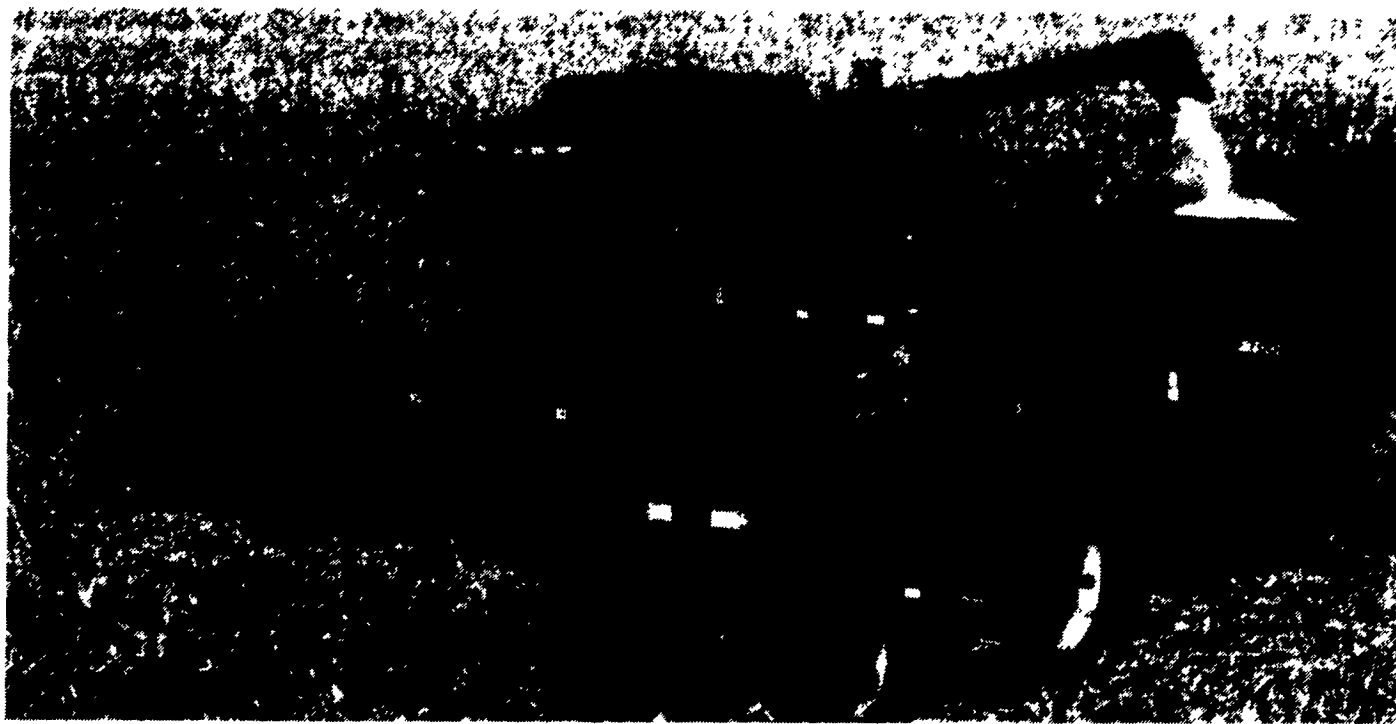


There's No Better Value

than a **CASE III** Axial Flow Combine



The PRODUCTIVITY IS LEGENDARY!

- "10 Acres an Hour"
- "Start Earlier & Stay Later"
- "Same acreage - 100 Hrs. Less"

Customers continue to be amazed at the Axial Flow's Productivity -

THIS IS VALUE WHILE YOU OWN AND RUN AN AXIAL-FLOW

PRESALE VALUE is real VALUE!

Check these "RETAIL CASH VALUES" in the SUMMER 1996 OFFICIAL

	Case IH	Deere	AC
1977	1460 - \$24,330	7700 - \$8,723	N6 - \$12,376
1981	1460 - \$33,233	7720 - \$21,345	N6 - \$18,473
1985	1660 - \$44,690	7720 - \$37,061	N6 - \$29,337
1989	1660 - \$63,057	9500 - \$60,636	R60 - \$53,901
1993	1666 - \$82,417	9500 - \$81,873	R62 - \$84,158

YOU CAN AFFORD AN AXIAL-FLOW TO HARVEST YOUR GRAIN!

All New & Used Products
Backed By
Hooper Parts & Service

HOOPER
C B HOOPER & SON INC

Authorized
UPS Station



MIDDLETOWN, DE (302) 378-9555 • INTERCOURSE, PA (717) 768-8231 • McALISTERVILLE, PA (717) 463-2191

