

1978 Ford

54,000 GVW Hendrickson Walking Beam
13-spd. Power Divider Rears
3208 Cat Diesel



New Diller 4250 Gal Tank
Ready to go to work
\$17,500
717-656-4114 Jake



Haulmark Enclosed Trailers

8'x16'\$4400.00
8'x18'\$4600.00
8'x20'\$4800.00

Includes these options:

- 36" Side Door
- Rear Ramp Door
- Two Roof Vents

MANY OTHER OPTIONS & MODELS IN STOCK

Ringo Hill Farms Equipment Co., Inc.
1624 Rt 212, Quakertown, PA 18951

Phone (610) 346-7340 Fax (610) 346-8041

1984 Eby 18x7 1/2' gooseneck livestock trailer, mini 5th wheel hookup, \$6500. 717/529-2831.

1985 Chevy 3/4 ton service truck w/lift gate & service body, auto, V8, air, runs well. \$3,200. 410-833-8304

1985 Chevrolet 30 series truck, 10' alum. Eby body, load from back or side, ex. cond. \$5,000. (302)653-5518

1985 Chevy S-10 Blazer, 4x4, auto, air, 2.8 V-6, latest PA inspection, new tires, runs great, \$4,995 OBO. (610)275-7696.

1985 Int9670, 350 Cummin, 9speed Tandem, long wheel base, 28 Eby double deck cattle and hog body. (717)437-2346

1985 Peterbilt Tractor, good condition, \$12,000 OBO. 610/967-2181.

1986 Iveco turbo diesel flatbed truck w/ramps and winch for car hauling or lawn maintenance service, 16,900GVW, no CDL needed, \$3,500/obo. (610)767-3631 eve. or leave message.

Sheets TRUCK CENTER, INC.

Hanover, PA
Route 94 - 5 Mile
South Off Rt. 30 & 94
Intersection
717-637-2108

York, PA
(Route 462)
2818 W. Market St.
717-792-2277

PA Toll Free 1-800-762-1503



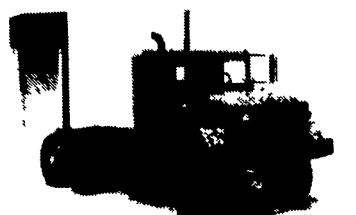
1995 INTERNATIONAL 5000 Paystar Tri-axle Dump

17-1/2 feet Alum. Dump Body, 3406 CAT 425 hp, Jake Brake, Fuller 14708LL Trans 46,000# Rear. All Warranty goes with truck. 69,000 actual miles

ARMY TRUCK PARTS

CHAMBERSBURG, PA

**COMPLETE TRUCK INVENTORY
COMPLETE PARTS INVENTORY
THE NATION'S LARGEST ARMY
TRUCK AND PARTS DEALER**



6x6 TRUCKS
2 1/2 & 5 TON
UNITS AVAILABLE
ENGINES
TRANSMISSIONS
TRANSFER CASES
DRIVE TRAIN
CAB KITS

Request Our Free Army Truck Parts Catalog

MEMPHIS EQUIPMENT

821 Lincoln Way West
P.O. Box M
Chambersburg, PA 17201

717/263-4194 FAX 717/263-4555



GLENN ALLEMAN, GEN. MGR.
MARK SIPES, PARTS MGR.



USED TRUCKS



'94 Chev. 2500. 8600 GVW, 350 FI Auto, PS, PB, AC, Cruise, tilt, PW, PDL, Rear Sliding Window, 2-tone tan & silver, 37,000 Mi. Local one owner
\$17,900



'93 Chev. 2500 4x4, 8600 GVW, 6.5 L Turbo Diesel, 5 sp, PS, PB, AC, Cruise, tilt, AM/FM Cass., 57,000 Miles
\$17,500

MARTIN'S AUTO SALES

1025 W. Main St., New Holland, PA 17557
(717) 656-6621



94 CHEV 2500 EXT. CAB 4X4
Shortbed, V8, AT, AC, Complete w/Western Power Angle Plow, 13,000 Orig. Miles. #C360



86 DODGE KARY VAN
12 Ft. Step Van, 360 V8, AT, PS, PB, 10,500 GVW, Only 39,000 MI. #D163



87 FORD F350 L-PAC DUMP
6.9 Diesel, 5-spd., PS, PB, Dual Tanks, 11,000 GVW, High Miles, #F526
SPECIAL \$12,995



88 FORD F350 DUALY
7.3 Diesel, 5-Spd., PW, PL, C, T, A/C, 82,000 Miles, #F512



83 FORD F350 CREW CAB DUALY
7.3L Diesel w/Banks Turbo, 42,000 miles, AT, A/C, PS, PB, PW, PL, C, T, Lots of Chrome #F515



85 CHEV 1500 SCOTTSDALE 4X4
w/western Power Angle Snow Plow, V8, AT, A/C, PW, PL, C, T, 113,000 miles
#F356 SPECIAL \$6,995



Bobby Gerhart's Truck World

2400 E. Cumberland St.
Rt. 422
Lebanon, PA 17042
717-273-7995

Mon. - Fri. 9-8, Sat. 9-3



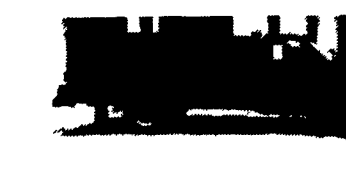
95 GMC 3500 FLATBED 4X4
6.5 Turbo Diesel, 5-spd., AC, PS, PB, Hide-away Gooseneck, 45,000 Miles. #G164



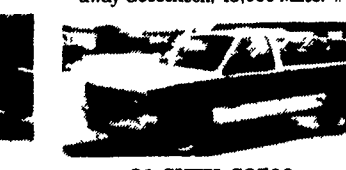
93 DODGE D350
w/ 12ft. stake body, Cummins diesel, 5 spd., PS, PB, only 59,000 miles #D162



93 DODGE D250 CLUB CAB 4X4
Cummins Turbo Diesel, AT, A/C, PW, PL, C, T, LE Pkg., Factory Warranty, Only 26,000 Miles, Like New Truck, #D173



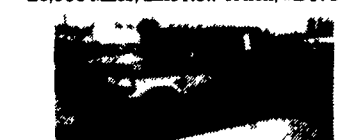
93 GMC 3500 HD L-Pack w/10 Ft. Stake Body.
6.5L Turbo Diesel, AT, PS, PB, 77,000 Miles, 15,000 GVW, Black w/Tan Interior #G159



91 CHEV. C2500
350 V8, AT-OD, A/C, 8600 GVW, Only 49,000 MI. #C349



95 FORD F150 CREW CAB 4X4
Centurion Conversion, 351 V8, AT-OD, A/C, XLT Trim, Alum. Wheels, 30,000 Miles



94 FORD F350 4X4
Crew Cab, 4x4, 7.3L Turbo Diesel, AT, OD, A/C, PS, PB, PW, C, T, 22,000 Miles #F493



93 DODGE D250
Cummins Turbo Diesel, AT, AC, Custom Walk-in Crew Cab, 24,000 miles, 5th Wheel & Class "A" Hitch, Auxiliary Fuel Tank. #D176



95 DODGE RAM 3500 4x4 DUMP
Power Angle Snow Plow, V-10, AT, AC, Loaded #D174



88 CHEV. K3500 CLUB CAB,
4X4, w/Reading Utility Body, 350 V8, 4-Spd., 4-10 Rear, A/C, #C345



94 DODGE RAM 2500 4X4
Cummins Diesel, AT, AC, PW, PL, PS, PB, C, T, Power Seat, 48,000 miles. #D175



95 CHEV K2500 EXT. CAB 4X4
454 EFI, AT-OD, A/C, PW, PL, Silverado, only 30,700 miles #C355



84 FORD F250 4x4 6.9 Diesel, 8,600 GVW, PS, PB, High Miles, Runs Good
SPECIAL \$4,500



95 DODGE RAM 2500 LARAMIE 4x4
SLT Pkg., V-10, 5 Spd., AC, PW, PDL, Cruise #D177



93 DODGE 2500 CLUB CAB
Cummins Turbo Diesel, 5 spd., A/C, PW, PL, C, T, 56,000 miles, Balance of factory warranty. #D167



83 FORD F250
6.9 Diesel, 4-Spd., 8,600 GVW, PA One Owner, 89,000 Miles #521



88 FORD F350 DUALY WESTERN HAULER
7.3 Turbo Diesel, AT w/DNE Overdrive, Loaded 3-Hitches, Only 63,000 Miles, #F524



92 DODGE 350 LE EXT. CAB 4X4 DUMP
Cummins Turbo Diesel, AT, AC, PS, PB, PW, PL, C, T, Stereo, 41,000 miles. #D166



94 CHEV 3500 EXT. CAB 4X4
Flat Bed, 6.5 Turbo Diesel, 5-Spd., A/C, PW, PL, C, T, stereo, 24,000 miles, #C359



94 GMC EXT. CAB 4X4
SLE-Z71 Pkgs., 350, AT-OD, A/C, PS, PB, PW, PL, C, T, 32,000 Miles, White & Blue, Captains Chairs & Console. #G162



93 CHEV 3500 CREW CAB DUALY
6.5L Turbo Diesel, Silverado, Loaded, Only 33,000 Miles, Red #C331