

FRI. OCT. 25 - 1:30PM State Graded Feeder Pig Sales, Carlisle Livestock Market, Inc.

FRI. OCT. 25 & SAT. OCT. 26 - Support for Prison Ministries Auction at Farmersville, Pa. Local Aucts.

SAT. OCT. 26 - Sauder's Nursery, 1210 E. Earl Rd., East Earl, 1 mi. SE of Blue Ball. Large selection of Nursery Stock. Nevin Martin & Sons, aucts.

SAT. OCT. 26, 9:30AM 172 Acre dairy farm & farm mach. in Western Perry Co., 1 mile W. of Kistler off Rt. 17. John B. Adair, Loy-ville, Pa. Kling's Auctions, auct.

SAT. OCT. 26 - Russell-Dale Holsteins Complete Dispersal. Ray & Barbara Bicksler, Richland, Pa. The Cattle Exchange.

SAT. OCT. 26 - 8:30AM Tack 11AM Horses. Rt. 522 3 Mi. East of Middleburg, PA., 5 Mi. West of Selinsgrove, PA. Middleburg Livestock Auction Sales, Inc.

SAT. OCT. 26 - 9AM Estate auction. Lykens Valley Farm, 68 acres, antiques & collectibles, farm equip., tools. Estate of Ray E. Hartman, off Rt. 25 into Valley Rd. at the west end of Gratz go to first farm on right. Mike & George Deibert, aucts.

SAT. OCT. 26 - 2PM Real estate. 1 mile W. of Bird-in-Hand in the town of Witmer take 340 W. of Bird-in-Hand to the light, turn right to sale on right. For Mervin & Sylvia King. Mel Hoover, auct.

SAT. OCT. 26 - 10AM Reale state, antiques, household goods, fine tall case clock, clocks, fiesta dishes, 8 HP Simplicity riding mower, tools. 24 Leacock Rd., Paradise Two., Lanc. Co. By Lillie Axe. Howard E. Shaub, auct.

MON., OCT. 28 - Real estate, 70 acre limestone farm, 1 mile north of Schaefferstown along Rt. 501. By Moses & Edna Garman. Aaron E. Martin Auct.

**DEALER IN ALL KINDS OF LIVESTOCK**

Also Crippled & Down Cattle

**MARLIN S. IRWIN**

Quarryville, PA  
PH: 717-786-3016

TUES. OCT. 29 - 7:45 PM Feeder Cattle Sales. Carlisle Livestock Market, Inc.

WED. OCT. 30 - Show & Sale. New Holland Sale Stables, Inc. 101 W. Fulton St., New Holland, PA.

TUES. NOV. 5 - Fed Cattle Sales, Carlisle Livestock Market, Inc.

THURS. NOV. 7 - Butcher & 1 1/2 acres, butcher equip, total liquidation. 627 Fivepointville Rd., Denver, Brecknock Twp, From Rt. 272 take Rt. 897 S. to Fivepointville. Turn right on Fivepointville Rd. to shop on left. Kline, Kreider & Good aucts.

**NOVEMBER**

FRI. NOV. 1 - 6PM Fall Heifer Sale. Belleville Livestock Market, Belleville, Pa. 17004 717-935-2146.

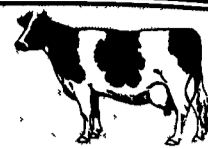
SAT. NOV. 2 - Horse Sale, Mel's Stables. Sale Held at Wallace Rd. Directions: From Rt. 23 in New Holland, Go South on Brimmer Ave., Go 2 Mi. South on New Holland Road to Hill Rd. Turn Left on Hill Rd. Proceed 1.2 Mi. to Sale on the Left, From Rt. 340 E. of Intercourse Take New Holland Rd., 2.5 Mi. to Hill Rd., Right on Hill Rd. to Sale on Left.

**NOTICE**

To assure that your Public Sale appears in the Public Sale Section we must have your advertisement by 5 P.M. Tuesday of each week's publication.

**Dairy and Livestock Sales**

**NEW HOLLAND SALES STABLES, INC.**



New Holland, Pa.

Located 12 Miles East of Lancaster, just off Rt. 23

**DAIRY SALE WEDNESDAY, AUGUST 21, 1996**

- 11:00 A.M. OPEN & BRED HEIFERS
- 11:45 A.M. SERVICE AGE BULLS
- 12:00 NOON LOCAL FRESH COWS
- 12:30 P.M. LOADS OF FRESH COWS

The place to buy Fresh Cows & Springers

**Weekly Consignors**

LeRoy Smucker  
Merle Breneman

Dale Hostetter  
Jim Hostetter  
David King

**Load of Canadian Cattle** selling for LeRoy Smucker - Popular Sires - Lindy Lincoln - S.S. Clyde - Broker - Young cattle, several milking 90 to 100 lbs.

**Complete Herd Dispersal For Myers Bros, Centerville, MD 105 Head Holstein Grades**

Home Raised Herd, used top bulls for years Really good uddered cows, young, about 40 month old average milking 61 lbs per day - no BST, Johnnies free herd Catalogs at ringside - with milk weights, calving dates, and breeding dates - If you need cattle for Herd Replacements, be at the Sale on 8-21-96 - Herd will sell about 1 p.m.

If You Have Cattle To Sell Call Us!! Or, Send Them in to us on Tuesday with Health Charts and Information on each Animal.

**Fall Heifer Sale - Sept. 7 1996 10 A.M.**

**NOTE**

Call us now with your consignments- The place to sell your dairy heifers - Registered, Grade, Bred, Open - WE SELL THEM ALL - Big and Small

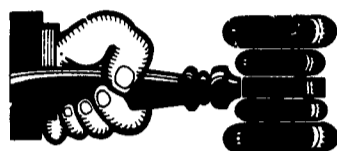
**NOTE**

Sales Managed By

**New Holland Sales Stables, Inc.**

Barn 717 351 1311 Fax 355 0706 Home 717 397 5538

**Norman & David Kolb, Mgrs. 61L**



**AUCTIONEER'S DIRECTORY**

Office: 717/291-1542 Residence: 717/354-9534

**JACK DELP**

Certified General Appraiser  
Specializing in Farms & Land

148 East Boad Street  
New Holland, PA 17557



John D. Stauffer

**Auctioneers**

1484 Mountain Road, Manheim, PA 17545

Fulltime Courteous Professional Auction Service Since 1976  
Real Estate • Farm Equipment • Antiques  
Personal Property • Livestock  
Phone 717-665-5099



KREIDER, KLINE & GOOD

AUCTIONEERS  
COMPLETE PROFESSIONAL AUCTION SERVICE  
REAL ESTATE - FARMS & RESIDENTIAL  
PERSONAL PROPERTY - ANTIQUES -  
FARM STOCK SALES - LIQUIDATIONS  
RANDAL V. KLINE LLOYD H. KREIDER  
AUCTIONEER-REALTOR AUCTIONEER  
717-733-1006 717-786-3394

ROY E. GOOD, JR.  
AUCTIONEER  
(717)445-4309

**ACTION AUCTION CO. INC.**

Farm Equip., Dairy Dispersal  
Real Estate, Business Liquidations  
Household Goods,  
Construction Equip.  
Certified Personal Property Appraisals  
(610) 873- 0901

**ROGERS COMMUNITY AUCTION INC.**

**PLEASE NOTE NEW SALE TIMES!**

Located 8 Miles East Of Lisbon, Ohio Or One Mile West Of Rogers, Ohio On St. Rt. 154.

**FRIDAYS**

Produce, Egg, Miscellaneous Auction Starts At 6 P.M.

Poultry Auctions Start At 6 P.M.

Doors Open At 7:30 A.M.

To Accept Consignments

Open Air Market All

Day And Evening

Doors Open At 7:30 A.M. To Rent Market Spaces. Over 2.5 Miles Of Outside Concessionaries And 30,000 Sq. Ft. Under Roof.

**WEDNESDAYS**

Farm Machinery

Consignment Auction

The 1ST WEDNESDAY EVENING OF EACH MONTH at 3 P.M. sharp.

We are open the preceding Tuesday of each sale day to check in consignments from 8 A.M. to 8 P.M. Handling farm machinery, lawn and garden equipment, tools, fire wood, cut lumber and related miscellaneous items. Five auctioneers operating simultaneously

Hay And Straw Grain

EVERY WEDNESDAY

selling truck

load lots by the bale or ton

starting at 1 P.M.

Barn Opens at 8 A.M. to Consign

Jim and Ken Baer

Auctioneers and Managers

Phone (216) 227-3233 or (216) 227-3236

"Sales Every Week Since 1955"

got milk?

**FARM AUCTION SAT., SEPT 14 @ 9 A.M.**

**REAL ESTATE**

46 ACRES, FARM EQUIP, OAK FURNITURE, GUNS, GAUDY IRON-STONE, ADAM'S ROSE PLATES.



Location: Lebanon Co. PA. RD #5 Myerstown, PA. From Rt. 422 in Myerstown, take Rt. 645 North about 6 miles to Greble Rd. turn left. Go about 2.5 miles to village of Greble. Turn left onto Houtztown Rd. Proceed 1.5 miles to sale on right. Across from Greble Auto Parts.

Real estate consists of a 49 acre farm under cultivation, 2-1/2 story farm house, 4 bay bank barn, about 35'x50' pole equip shed. House has 3 br. & bath upstairs. Kit., Dining Rm., Parlor, L.Rm., Downstairs. Terms: 10% down day of sale, bal. within 60 days. Real Estate to be sold at 12 Noon.

Sale For

**Charles I. Noll**

P.O.A. Allen F. Helwig

Esquire: Sandoe-Cooper



Auctioneer:  
Dwight D. Miller AU002414-L  
Bethel, PA 19507  
(717) 933-5736

**HFA HORNING**

Farm Agency, Inc.

Courteous Real Estate Services  
Professional Auctioneers  
State Certified Appraisers  
Specializing in Farms and Land  
Alvin Horning, Broker  
Route 23, Morgantown, PA  
(610) 286-5183

