

Public Auction Register

Closing Date Monday 5:00 P.M.
of each week's publication

THURS. OCT. 3 - 11AM
Estate of Walter Kanach, Flemington, NJ. Late model farm machinery. Col. Fred Daniels, auct.

FRI. OCT. 4 - Keystone Classic Hog Sale Farm Show Complex, Harrisburg, Pa. Harry H. Bachman, Auct.

FRI. OCT. 4 - 7PM Graded Feeder Sale. Rt. 522 3 Mi. East of Middleburg, PA., 5 Mi. West of Selinsgrove, PA. Middleburg Livestock Auction Sales, Inc.

SAT. OCT. 5 - Feeder Calf Auction in conjunction with the K.I.E. Farm Show Complex, Harrisburg, Pa. Harry H. Bachman, Auct.

SAT. OCT. 5 - Horse Sale, Mel's Stables. Sale Held at Wallace Rd. Directions: From Rt. 23 in New Holland, Go South on Brimmer Ave., Go 2 Mi. South on New Holland Road to Hill Rd. Turn Left on Hill Rd. Proceed 1.2 Mi. to Sale on the Left, From Rt. 340 E. of Intercourse Take New Holland Rd., 2.5 Mi. to Hill Rd., Right on Hill Rd. to Sale on Left.

SAT. OCT. 5 - 8:30AM Lanc., Pa. 62 Glen Oaks Drive, Real estate, antiques, household goods. Ruth Wiker Est., Witman, aucts.

SAT. OCT. 5 - 10AM Heifer Sale. New Holland Sales Stables, Inc. 101 W. Fulton St., New Holland, PA.

MON. OCT. 7 - 6PM 2 1/2 story brick dwelling, corner real estate. at 900 W. Main St., Mt. Joy, Lanc. Co., Pa. By Wayne Baum, Brenda Baum. Horst Aucts.

SAT. OCT. 5 - 9AM 6 acres. Along Deep Creek Rd., in the village of Weishample midway between Route 125 and Rt. 901. Ronald G Sauers & Sandra L. Souders, owners. Mike & George Deibert, aucts.

SAT. OCT. 5 - 9:30AM HO Train Auction. Hummelstown Fire Hall at 249 E. Main St., Hummelstown, Pa. Estate of Arlin Hoffer. Bob Rath, auct.

SAT. OCT. 5 - 5:30PM Horse & Tack Sale. Carlisle Livestock Market, Inc.

FRI. OCT. 11 - 1:30PM State Graded Feeder Pig Sales. Carlisle Livestock Market, Inc.

FRI. OCT. 11 - 6PM Feeder Sale. New Holland Sales Stables, Inc. 101 W. Fulton St., New Holland, PA.

FRI. OCT. 11 - 7PM Dairy Sale. Rt. 522 3 Mi. East of Middleburg, PA., 5 Mi. West of Selinsgrove, PA. Middleburg Livestock Auction Sales, Inc.

SAT. OCT. 12 - International Excellence-Hosted by Pen-Col Farm to be held at Camp Victory, Millville, Pa. The Cattle Exchange.

SAT. OCT. 12 - 8:30AM Trucks, trailers, construction equip, tools and tires to be held at A.C. Diefenbach Auction/Inc. New Holland, Pa. By Witman Aucts.

QUILT AUCTION & Chicken Barbecue

Saturday, August 24, 1996

AUCTION HIGHLIGHTS

Auction will begin at 1:30 PM and will be conducted by the Sanford Alderfer Auction Company, Hatfield, PA • 393-3000 (AU-001117-L). Highlights include. 50+ Quilts including Signed Jeff Gordon Race Car Quilt, Daisy Rings, Dresden Plate, Love Ring, Crib Quilts, String Star, Yankee Star Chain, Lone Star, Encircled Tulip, Log Cabin Fan, California Star, (some quilts signed and dated), wall hangings and many more Plus Winross Trucks, and a Menno Simons stamp postmarked from Berlikum, Friesland, Netherland.

OTHER ACTIVITIES INCLUDE

Nascar's Jeff Gordon's #24 Race Car
On campus from 10:00 AM to 4:00 PM

Flea Market • Baked Goods • Handcrafts Refreshment • Children's Activities
Flea Market 7:00 AM - 4:00 PM • Children's Activities 10:30 AM - 1:00 PM • Hay rides 10:30 AM - 3:00 PM • Chicken Barbecue 11:00 AM - 5:00 PM • Antique Car & Engine Show

Community Old Fashioned Hymn Sing
Sunday, August 25 at 6:00 PM

For: Souderton Mennonite Homes
At: 207 W. Summit Street, Souderton, PA 723-9881

Ad Sponsored by:  Souderton Mennonite Homes



2ND ANNUAL PUBLIC CONSIGNMENT AUCTION

Sat., August 31, 1996
Auction Time 9 a.m.

Directions: Located in Schoeneck, Pa. From Ephrata take Rt. 272 North to Rocky Ridge Auto Sales. Make a left onto Schoeneck Rd. Proceed 3 1/2 miles to Auction.

From Schaefferstown take Rt. 897 East to Cocalico Rd. Follow to Auction. Look for arrow signs.

TRACTORS: John Deere 420-W Restored New tires (Extra Nice), John Deere M-T Restored with good tires (Extra Nice), 1940 John Deere H (Restored), John Deere 40 Standard with 3 Pt. Hitch, John Deere 40 tricycle with 3 pt Hitch, John Deere Cyclone B repainted (Nice), 2 Oliver 550's, Oliver Super 77 tricycle, Oliver 60 row crop with all sheet metal, tuff-bilt rear engine Hydro with front and rear 3 pt. Hitch & cultivator, 1953 Massey 22 with 3 pt. Hitch (recently overhauled), 3-N Ford with 3 pt. Hitch, 1974 Mack U Model Dump Truck.

EQUIPMENT: John Deere 3 pt. Disc., Ferguson 3 pt. Disc, 4 ft. Rotary Mower, Ferguson 2 Bottom plow, NH 467 Haybine, NH 269 Hayliner Baler, NH Super 66 Baler, 5'3Pt. Blade, 3 Pt. Field Sprayer, 200 Gallon Field sprayer with Polytank, Farmec Gravity bin wagon, 32' Bale Elevator, NI Hayrake, NI 224 Tandem Axle manure spreader with Hyd. Gate, IH flail chopper, 10 ft. Cultipacker, Flat wagon, Sawbuck, Oliver 2 bottom 3 pt. trip plow, 3 pt. 2 row cultivator, Drag Harrow, Potato Plow, Small utility trailers (new), P.T.O. Alternater Generator, Agrimetral Straw chopper with blower 11 Hp Honda Elec. Start, Jackson Pull type fertilizer spreader.

NOTE: This is only a partial listing with many more items arriving until sale day. Lunch will be served. If you have any items to consign call Philip Hurst at (717) 336-7809. Receiving dates August 24, 29, 30. NO JUNK, NO ITEMS ACCEPTED DAY OF SALE.

TERMS: Cash or Good PA Check. All statements made on sale day take precedence over any printed material. NO OUT OF STATE CHECKS.

See Next Week's Paper for Full Listing

For Fast Reliable Auctions
Call HURST FIRST
(717) 336-7809
150 N. King St.
Denver, PA 17517
AU-003375-L

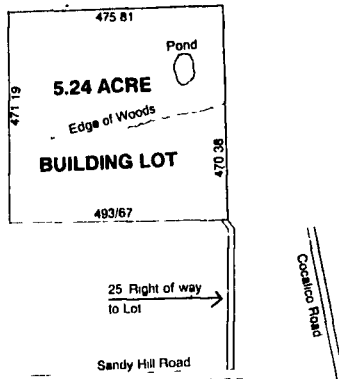
PHILIP HURST
Professional
AUCTIONEER



5.24 ACRE LOT PUBLIC AUCTION

SAT., SEPT. 14, 1996
Auction Time 11:00 A.M.

DIRECTIONS: From Ephrata take Route 272 north turn left onto Schoeneck Road to Schoeneck, go through Schoeneck on Cocalico Road go 1/2 mile past turnpike, turn left onto Sandy Hill Road, to prop. on right. West Cocalico Township, Lancaster Co., PA.



PARTIALLY WOODED BUILDING LOT

Lot is approx. 1/2 wooded and 1/2 open. Lot has a nice private setting approx. 400' off the road with a stoned in right-of-way to the property. Lot is perked and ready to be built on, nice gentle slope, pond, bordered by woodland & farmland. A great location for your home.

TERMS: 15% down payment at the auction, balance at final settlement on or before October 15, 1996.

LOT INSPECTION: For a private showing of lot contact Eugene at (717) 336-3676 or Aaron at (717) 733-3511.

Attorney: Michael P. Kane 299-5251

Auction By

Eugene K. & Linda S. Martin



8.6 ACRE WOODED LOT 2.66 ACRE CORNER LOT PUBLIC AUCTION

SAT., SEPT. 7, 1996
SELLING AT 11:00 A.M. ON SITE:
8.6 AC. WOODED LOT

DIRECTIONS: From Reinholds take Route 897 North through Blainsport continue approx. 2 miles, turn right onto Forest Road, go 1 mile to lot on right, Lancaster Co., PA.

This is a prime 8 acre wooded building lot with southern exposure, lots of road frontage, mature trees and a nice setting with breathtaking view. This lot is ready to be built on with a stoned driveway and perked for a standard septic system. A must see lot!

SELLING AT 1:00 P.M. ON SITE:
2.66 ACRE LOT

DIRECTIONS: From Reinholds take 897 north to lot on the corner of 897 and Meadow Road. This lot is Zoned R-2 and has adjoining public water and sewer. Great location to build a house. Also business possibilities. Check with West Cocalico Twp. for your particular needs. Good location at the edge of town.

TERMS: For both properties, 10% down payment, balance at final settlement on or before October 1, 1996.

PROPERTY INSPECTION: Interested parties can meet the owner at either property. For appointment contact Eugene at (717) 336-3676.

NOTE: Both properties have lots of potential. Be prepared to bid, owners plan to sell!

Attorney: Michael P. Kane, 299-5251

Auction By

Eugene K. & Linda S. Martin



"Horst Auctioneers" PUBLIC SALE OF KEY-AID INVENTORY REDUCTION SALE

TILLERS - MOWERS
PET SUPPLIES - TOYS
EPHRATA
MON., AUGUST 26, 1996
At 4 P.M.

Located at 1739 West Main Street (Rt. 322 approx. 1 mi. W. of Ephrata), Ephrata, Lanc. Co., PA.

Home and Garden

(New)
5 H.P. Ace Rototiller; 5 H.P. Yardman (Rear Tire) Rototiller; 10 H.P. Deutz-Allis Riding Mower (Used); 5 H.P. Go-Cart; Lawn Spreaders; Echo Mower; String Trimmers; Ace Metal Trailer; Express Wagon (Air Tires); 12 Speed Murry Mountain Bike (Used), 6,000 - 8,000 - 10,000 - 12,000 Air Conditioners (New); Deluxe Garage Door Openers; Assorted Outdoor Furniture; Grills; Bird Houses & Feeders; Lawn Sprinklers, Brooms; Submersible Well Pump (Used); Flags, Chimney Caps; Log Lighters; Water Filters; Tubs; Coolers; Foot Warmers; Tingley Boots; Baseball Caps, Christmas Decorations; Bike Helmets; Coleman Stove, Phones; Bush Cutters

TOOLS

Keller Stepladders (Wood, Aluminum & Fiberglass); Keller Extension Ladder; 18" McCulloch Chain Saw, Drill Press; Ace 10" Table Saw; Ace 10" Band Saw; Ace 6" Jolinter & 4" Bench Jolinter; Ace 15" Scroll Saw; 6" Bench Grinder; Makita Sander; Vise - Router Table; Caliper; Pick Up Magnet; Welding Supplies; Power Tool Accessories; Wagner Power Roller; Conduit Bender; Rubber Tired Wheelbarrow; Tool Chest; 7 cu. ft. Wood Yard Cart; Buck & Pocketknives; Clothing Racks; Shelving; Store Fixtures; Pipe Wrenches; 200' Tape Measure; S.S. Sink; Paints - Rustoleum, Fence & Barn Paint; Masonry; Deck Cleaners & Stains. Swimming Pool Paints; 55 Gal. Metal & Plastic Drums.

FARM & PET SUPPLIES

Wood Feed Cart; Wahl Clipper; Groom Clippers; Hot Shot Prod-Insulators; Poultry Fountain; 14'-16' Steel Gates; Calf Dehomer; Pet Doors; Chemilizer Medicator; Leather Conditioner; Shampoos; Vitamins; Dog Food; Gun - 54 Gal. Thompson Muzzle Loader Rifle; New Toys & Banks.

(Items subject to prior sale).

No Out of State Checks unless accompanied by a current Bank Letter or prior arrangement with auction service.

Terms By

KEY-AID DISTRIBUTORS, INC.

HORST AUCTIONS.
T. Glenn
Timothy G.
Thomas A.
AU438L
(717) 859-1331 • (717) 738-3080
Fax # (717) 738-2132
"VOICES OF EXPERIENCE"

Public Sale 67 ACRES SANDSTONE STEER-HOG FARM

5 ACRES SANDSTONE TILLABLE LOT
TUES., SEPT. 17, 1996
2:00 P.M.

Located at 776 Glenwood Drive, (Hahnstown), Ephrata, Lancaster Co., PA.

Directions: From Rt. 322 in Hinkletown at traffic light, take Martindale Rd. 1/4 mile, turn left onto Glenwood Drive, proceed app. 1 1/2 miles to sale on right. Watch for yellow sale signs.

A certain tract of land consisting of app. 67 acres, app. one acre wooded. Presently zoned residential, in the process of being changed to agricultural. Erected thereon a:

2 1/2 Story Frame Dwelling

Large Kitchen With Built-In Cabinets, Dining room, Living Room, Bedroom, Laundry. 5 Bedrooms, Full Bath. Attic Storage. Full Basement With Outside Entrance. Porch. Electric Water Heater. New Sewer System. Well With Pressure System.

50'x98' Frame Steer Barn

With 46' x 52' Cemented Feedlot Under Roof.
2-Silos 16'x50' Cement Stave; 12' x 38' Tile
32' x 52' Frame Tobacco Shed
With Corn Crib Attached

24'x26' Frame Drive-Thru Corn Shed
40'x52' Fram Fattening Unit Cap. For 160 Hogs
Two Frame Hog Buildings. 36' x 82', 32' x 48'
36' x 42' Frame Two-Story Hog-Chicken House
Some Of The Hog Units Have Manure Pits.

26' x 46' Block-Frame Four Car Garage
200 AMP Service; Several Fruit Trees.

Also At Same Time And Place:

5 Acres Sandstone Tillable Lot

Located Directly Across The Road From Farm. 460' Road Frontage. Zoned Agricultural.

OPEN HOUSE: Saturdays, August 31 and September 7 From 1:00 to 4:00 P.M.

TERMS: 10% down day of sale, balance on or before April 1, 1997.

Attorney

SALE FOR:

James Weaver ALLEN H. BRUBAKER
717-733-4264

Auctioneers

Nevin Martin & Sons

AU-1078-L

717-354-7186

Not Responsible For Accidents