

Dairy Show Announces Winners

The Northampton County 4-H Dairy Show was held recently at the Plainfield Fair, Ackermanville. The judge was Adam Sonnen, Lebanon County.

Winners include: Overall champion fitter, Jennifer Ulmer, Nazareth; Reserve overall champion fitter, Jennifer Koehler, Bangor; Overall champion showman, Jennifer Ulmer, Nazareth; and Reserve overall champion showman, Brian Kromer, Easton.

Junior champion was Juniperdale Skybuck Pansy, exhibited by Jennifer Ulmer, Nazareth; reserve junior champion, Juniperdale Encore Rose, exhibited by Zachary Fulmer, Nazareth; senior and grand champion, Kromerdale Manager December, exhibited by James Kromer, Easton; and reserve senior and reserve grand champion, Keystone Mark Cheerio, exhibited by Bryant Hlavaty, Easton.

MILK
AMERICA'S HEALTH KICK

Penn-Gate Shows Grand At South Central Championship Show

(Continued from Page A25)

and youth divisions was Parnell-View Stardust Derry, a summer yearling owned by Amy Jo Hartman, of St. Thomas.

The reserve junior champion of the open division was Meadu-Vue Encore Cathy, a winter yearling owned by Robert Eckstine, of Mercersburg.

The youth division junior champion was a spring yearling, Tri-Day Moxie, owned by David Day, of Shippensburg.

PA HOLSTEIN SOUTH CENTRAL CHAMPIONSHIP SHOW

SPRING CALF: 1.Sarah Day; 2.Claton Wood; 3.Alan McCauley.
WINTER CALF: 1.John Creek; 2.Scott Walton; 3.Matthew Day.
FALL CALF: 1.Justin Burdette; 2.Aaron Horst; 3.Jeff, Michelle Reasner.
SUMMER YEARLING: 1.Amy Jo Hartman; 2.Tara Kocher; 3.June Boyer, John Haar.
SPRING YEARLING: 1.David Day; 2.James, Nina Burdette; 3.Justin Burdette.
WINTER YEARLING: 1.Robert, Rhodena Eckstine; 2.Thomas Boyer; 3.Kevin Horst.
FALL YEARLING: 1.Angle Beshore; 2.June, John Haar; 3.Amy Jo Hartman.
JUNIOR CHAMPION: Amy Jo Hartman, Parnell-View Stardust Derry.
RESERVE JR CHAMP: Robert Eckstine, Meadu-Vue Encore Cathy.
JR BEST THREE: 1.Tri-Day Farm; 2.Windy-Knoll View; 3.Parnell-View Farm.
DRY COW, 4 YRS, YOUNGER: 1.Tara Kocher; 2.Dale, Deanna Bendig; 3.Scott Walton.
DRY COW, 5 YRS, OLDER: 1.Justin Burdette; 2.Thomas III, Shayne Dum.

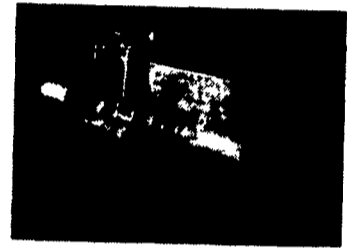
JR 2-YR-OLD: 1.Tom McCauley; 2.Angle Beshore; 3.Dale, Deanna Bendig.
SR 2-YR-OLD: 1.Alan McCauley; 2.Sandy Thomas, Woodbine Farms; 3.Coredale Farm/Deanna Bendig.
JR 3-YR-OLD: 1.David Kocher; 2.Penn-Gate Farm; 3.Penn-Gate Farm.
SR 3-YR-OLD: 1.James, Nina Burdette; 2.Guy, Sharon Hammond; 3.Amanda Neagle.
4-YR-OLD: 1.Woodbine Farms; 2.Thomas III, Shayne Dum; 3.Nelson Bomgardner.
5-YR-OLD: 1.Penn-Gate Farm; 2. Kevin Horst; 3.Penn-Gate Farm.
AGED COW: 1.Jeff, Michelle Reasner; 2.Nelson Bomgardner; 3.Quentin Beisel.
SENIOR CHAMPION: Penn-Gate Farm, Penn-Gate Chief Mark Alice.
RESERVE SR CHAMP: David Kocher, Hearts-Desire Jethro Carlo.
GRAND CHAMPION: Penn-Gate Farm.
RESERVE GRAND: David Kocher.
BEST THREE: 1.Penn-Gate Farm; 2.New Direction Farm; 3.Loving-Meadows.
100,000 LB.: 1.Robert, Rhodena Eckstine; 2.Curtis, Ann Day; 3.Penn-Gate Farm.
DAM, DAUGHTER: 1.Penn-Gate Farm; 2.Justin Burdette.
PRODUCE OF DAM: 1.Loving-Meadows; 2.Windy-Knoll-View; 3.Spungold Holsteins.
BEST BRED, OWNED: Penn-Gate Farm, Alice.

LAND PRIDE

Quality equipment from a quality company.



GROOMING MOWER
3-Spindle, 48", 60", 72" & 90"



BOX SCRAPERS
42" Through 96"



REAR BLADES
48" Through 120"



PULVERIZERS
48" Through 84"



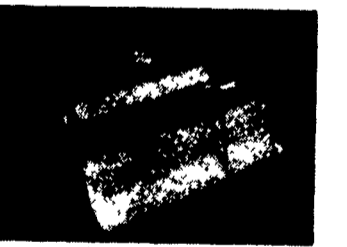
ROTARY CUTTERS
48" Through 120"



OVER SEEDERS & PRIMARY SEEDERS
48" And 72"



LANDSCAPE RAKES
48" Through 96"



TILLERS
34" Through 76"



NEW LANDPRIDE ALL-FLEX MOWERS
11', 14', 16.8' & 21.9 Ft. Cutting Widths



Showing the youth division junior champion animals of Pa. Holstein Association South Central Championship Show are, from the left, Cumberland County Dairy Princess Heather Lehman, David Day with his reserve junior champion, Amy Hartman with the junior champion, and show judge Robert Morrell.

make it Milk

Dear Friends of the Clinic for Special Children.
We are again asking for your support and donations of saleable items to sell at the 6th Annual Benefit Auction on Saturday, Sept 21, 1996, at the Leola Produce Auction site on Brethren Church Rd., Leola, PA.
All proceeds will go to the Clinic for Special Children, a non-profit organization, with Dr. Holmes Morton as the attending physician. Dr. Morton has taken a special interest in several hereditary diseases. By testing all newborn babies of high-risk percent-age, he has been able to prevent irreversible brain damage of many of these young children. The same tests that are done at the clinic for \$350 would cost \$3500 to \$4000 at major medical centers, making these tests too expensive for many parents. The costs of owning and operating this laboratory equipment are huge, but with the funds from this annual auction the clinic has been able to offer this service to their clients at a price that is affordable by the average parent.
You may contact any of the following for more information or, if you wish, deliver your donation to any of them. Thank you for your support.
The Sales Committee

- John Stoltzfus: 20 Stoltzfus Lane, Leola, 717-354-5415
- Enos Hoover: 373 Grist Mill Rd., New Holland, 717-354-5415
- Ernest Zimmerman: 330 W. Mt. Airy Rd., Stevens, 717-733-2645
- Harvey Hoover: 263 S. Farmersville Rd., Leola, 717-656-9694
- Leonard Hurst: 124 Rothsville Station Rd., Lititz, 717-626-4705
- John Fisher: 3405 Old Phila. Pike, Ronks (at Intercourse)
- Stevie Huyard: N. Railroad Ave., New Holland
- Stevie Beller: 2198 Hubson Road, Lancaster
- Jacob Zook Jr.: 4021 Old Phila. Pike, Gordonville
- Daniel Stoltzfus: Box 2220 Hubson Road, Lancaster
- Mose Stoltzfus: Buena Vista Rd., Gap, PA 17527
- Daniel B. Lapp: 700 Strasburg Pike, Lanc., PA 17602
- John Shirk 300 Forest Hill Rd., Leola, Pa, 656-8916

LIQUID MANURE SPREADER

WITH FLOTATION TIRES TO MINIMIZE SOIL COMPACTION
Available with complete line of spreading tool bars and precise flow control to spread manure the ecological way eliminating spray drift and reducing odors. Our tool bars are designed to apply hog or dairy manure on growing fields, between rows of corn or on harvested fields.

4-6 OR 8 WHEEL SPREADERS WITH POWER STEERING - 3050 TO 9000 US GAL.

SPREADERS WITH SINGLE AXLE OR TANDEN - 2300 TO 6000 US GAL.

- "Y" shape bottom for more complete clean out.
- Standard exterior finish: epoxy primer and urethane paint.
- Low profile tank for maximum visibility and stability.

MID-ATLANTIC AGRISYSTEMS

Liquid Waste Specialists
Oxford, PA
800-222-2948

LEBANON
Rt. 47, Box 406
Lebanon, PA 17042
Rt. 418 1/2 Mile West
Of Schaefferstown
717-649-2000

KELLER BROS.
KUBOTA
TRACTORS & EQUIPMENT
Serving Central PA Since 1921
PILOTSI KELLER BROS.
AIRPORT
280' RUNWAY 50' Front Dealership

LANCASTER
1950 Franklin Pike
Lancaster, PA 17601
At Route 50 &
Fruittville Pike
717-656-2500