

Leola Produce

Auction

Leola, PA
August 13, 1996

Report Supplied by Auction

APPLES: EARLY VARIETIES 2.25-3.75 ½ BU.
BEANS: GREEN 15.00-18.00; YELLOW 19.00-23.00, BOTH BU.; LIMA 31.00-37.00 BU.; KENTUCKY & ROMA 8.50-14.50 BU.
BLACKBERRIES: 8.75-16.00 12 PINT FLAT.
BLUEBERRIES: 16.00-19.50 12 PINT FLAT.
CABBAGE: GREEN 5.00-7.50 CRATE, .45-.75 HEAD.
CANTALOPES: SM. TO MED. .10-.25 EACH, LRGE. TO EX. LRGE. .30-.65 EACH.
CUCUMBERS: #1 5.75-8.75 1 1/9 BU., 2.75-5.50 #2; PICKLING SM. TO MED. 6.00-9.00 ½ BU., LARGE TO EX. LRGE. 3.25-5.75 ½ BU.
EGGPLANT: 6.25-8.25 1 1/9 BU.
HONEYDEWS, HONEYLOPES: SM. TO MED. .30-.50, LRGE TO EX. LRGE. .55-.90.
PEACHES: YELLOW, WHITE 4.50-9.25 ½ BU.
PEPPERS: GREEN SM. TO MED. 5.00-7.00, LRGE. TO EX. LRGE. 7.00-8.75, BOTH 1 1/9 BU.; RED 14.00-19.50 ½ BU.; HOT 5.00-6.75 ½ BU.
PLUMS: ASSORTED VARIETIES 4.25-8.50 8 QT. FLAT.
POTATOES: NEW 4.25-5.75 ½ BU.; 5.25-9.50 50 LBS.
RED BEETS: 4.50-6.50 15 CT. BUNCH, 6.25-8.25 1 1/9 BU.
SQUASH: YELLOW STRAIGHT-NECK 3.50-6.25 ½ BU.; SMALL PATTYPAN 9.00-13.50 10 LBS. SMALL.
SWEET CORN: .85-1.65 DOZEN.
TOMATOES: SM. TO MED. 5.00-8.50, LRGE. TO EX. LRGE. 9.00-14.00, BOTH 25 LBS.; CHERRY 3.50-7.50 12 PINT FLAT; PLUM 4.50-5.75 25 LBS.
WATERMELON: YELLOW DOLLS .10-.40 EACH; SEEDLESS RED, YELLOW SM. TO MED. .95-1.50, LARGE TO EX. LRGE. 1.55-2.40 EACH; CRIMSON .45-1.50; SANGRIA SM. TO MED. .95-1.25, LRGE. TO EX. LRGE. 1.30-2.35.
ZUCCHINI: YELLOW AND GREEN SM TO MED. 8.00-13.00; LARGE TO EXTRA LARGE: 2.50-6.75 ½ BU.
SALE DAYS ARE MON.-SAT., 8:30 A.M.

Kutztown Produce

Auction

Fleetwood, PA
August 9-15

Hay and Straw at 9:00 a.m. Sat. followed by produce

Report Supplied by Auction

APPLES: 1.50-5.00 ½ BU., 4.50-6.00 BU.
BASIL: 1.00-3.50.
BEANS: GREEN 2.00-10.00, 6.00-10.00 BU.; YELLOW 2.00-10.00 4 BU., 5.00-9.00 BU.; LIMA 16.00 ½ BU.
BLACKBERRIES: 8.00-17.00 12 PINT FLAT.
BROCCOLI: 2.50 BU.
CABBAGE: .30-.60 HEAD, 2.00-8.50 BAG, 4.50 BOX.
CANTALOPES: .05-1.25 EACH.
CHERRIES: GROUND 5.00 8 QT. FLAT.
CUCUMBERS: 1.00-4.00 ½ BU., 2.00-7.00 BU.
EGGPLANT: 2.00-6.00 ½ BU., 7.00-25.00 BU.
EGGS: .75-1.15 DOZ.
GARLIC: 1.00-1.60 LB.; BRAIDED 5.00-6.00.
HONEYDEW: .10-2.20 EACH.
NECTARINES: 4.00-11.50 ½ BU.
ONIONS: 5.00-9.00 ½ BU.
PARSLEY: 3.50.
PEACHES: 2.25-13.00 ½ BU.
PEARS: 1.00-10.00 ½ BU.
PEPPERS: 2.00-5.00 ½ BU., 6.00-15.00 BU.; HOT 2.00-6.00 ½ BU., 2.50-14.00 FLAT.
PICKLES: 2.00-8.00 ½ BU., 12.00 BU.
PLUMS: 3.00-11.00 8 QT. FLAT, 22.50-30.00 ½ BU.
POTATOES: 2.00-3.50 8 QT. FLAT, 2.00-6.00 ½ BU., 1.50-5.50 50 LBS., .35-1.00 5 LBS.
RED BEETS: 2.00-7.00 ½ BU., .25-.65 LB.
RHUBARB: .10-.65 LB.
SQUASH: YELLOW 1.00-4.00, ½ BU.; SUMMER .75-6.00.
SWEET CORN: 1.00-2.50 DOZ.
TOMATOES: 1.00-2.50 10 LBS.; 2.00-14.00 25 LBS.; CHERRY 5.00-16.00 FLAT; YELLOW 4.50.
WATERMELON: 1.60-2.75 EACH; SEEDLESS 1.40-3.00; YELLOW .50-.80.
ZUCCHINI: 1.00-7.50 ½ BU.
BOUQUETS: .85-2.75.
CUT FLOWERS: 3.00-12.00 BOX.
GLADIOLI: .15-.45.
MUMS: 1.35-1.75.
PERENNIALS: .25-1.10.
POTS AND PLANTERS: .25-.50.
SUNFLOWERS: .25-.90.

Pennsylvania

Livestock

WAYNESBURG, PA
AUGUST 15, 1996

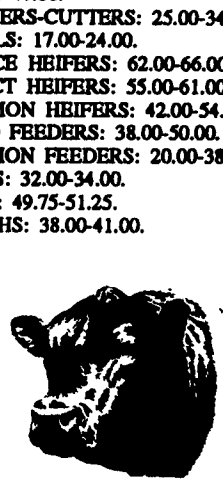
CATTLE:

SLAUGHTER COWS: Utility and Commercial 31.00-39.00; Cutter and Boning Utility 26.00-34.00; Canner and Low Cutter 20.00-29.00; Shells 20.00 & down.
BULLS: Yield Grade 1 1500/2000 lbs, 37.00-46.50; Yield Grade 2 1000/1400 lbs, 32.50-38.00.
FEEDER STEERS: M&L 1 300/500 lbs, 40.00-60.00; 250/280 lbs, 48.00-62.00; M 600/900 lbs, 40.00-54.00.
HEIFERS: M 1&L 300/500 lbs, 35.00-50.00; L 1400/650 lbs, 38.00-52.00.
BULLS: M&L 1 300/620 lbs, 32.00-56.00.
CALVES: Veal: Prime 50.00-60.00; Choice 40.00-50.00; Good 35.00-48.00; Farm Calves: #1 Holstein Bulls 90/120 lbs, few 35.00-50.00; #2 Holstein Bulls 80/100 lbs, few 20.00-40.00; Beef X Bull & Hfr/Hd 35.00-60.00.
HOGS: Barrows & Gilts: #1-2 210/255 lbs, 42.00-53.00; #2-3 255/280 lbs, 52.00-60.00; Sows: #1-3 300/500 lbs, 30.00-41.50; Feeder Pigs: 1-3 15/20 lbs, 5.00-17.00/hd; 1-3 25/35 lbs, 10.00-30.00/hd.
LAMBS: High Choice 80/100 lbs, 88.00-92.00; Choice 70/90 lbs, 80.00-94.50; Feeder Lambs: Good 60.00-85.00; Sheep 15.00-35.00; Fat Sheep 30.00 and down.
GOATS: Large 50.00-130.00/hd; Medium 30.00-50.00/hd; Small 10.00-34.00/hd.
HORSES: Horses 42.00-70.00; Ponies 20.00-44.50.

Greencastle Livestock

GREENCASTLE, PA
AUGUST 15, 1996

CATTLE: 166: Cows: Steady to 1.00 higher.
HEIFERS: Select Ind at 54.75.
COWS: Breaking Utility and Commercial 37.00-41.75, few to 42.50; Cutter and Boning Utility 32.75-36.75; Canner and Low Cutter 26.00-32.00; Shells Down to 22.00.
BULLS: Yield Grade 1 1300/1940 lbs, few 37.75-40.00.
FEEDER CATTLE: STEERS: Few L1 400/830 lbs; Steers & Bulls 50.00-54.50; HEIFERS: Few M1 400/645 lbs, 36.00-51.00.



Public Auction Register

AUGUST

SAT. AUG. 17 - 9AM Antiques, furniture, collectibles. For the late Mary Adams Estate. at 117 N. Front St., Milton, Pa. Michael P. Weaver, auct.

SAT. AUG. 17 - 9AM Valuable improved real estate, early train, personal property. 1011 Powell Rd., Thurmont, Md. Rt. 5 North East on Powell Rd. Luther Martin, deceased. Delbert S. Null, Marvin S. Curtins, Norman O'Neil, aucts.

SAT. AUG. 17 - 11AM Special Dairy Sales at the Belleville Livestock Auction, Belleville, Pa. Consigned by Glen Fite.

WED. AUG. 21 - 1:30PM Belleville Livestock Market, 41 Head Holsteins. For Info: Gene Glick 717-867-2703.

FRI. AUG. 23 - 9:30AM Crawler loaders, dozers, loader backhoes, skid loaders, cranes, farm tractors & forklifts, generators, pumps, light trucks, rollers, road tractors & rollbacks, cab & chassis, dumps and welding trucks, pickups, box trucks, trailers, misc. 9801 Hansonville Rd., Frederick, Md. Wolfe Auct.

SAT. AUG. 24 - Quilt Auction. For Souderto Mennonite Homes at 207 W. Summit Street, Souderton, Pa. Sanford Alderfor Auction Co.

Jersey Shore Livestock Market, Inc.

Auction every Thursday at 4:00 p.m.

Jersey Shore, Pa.

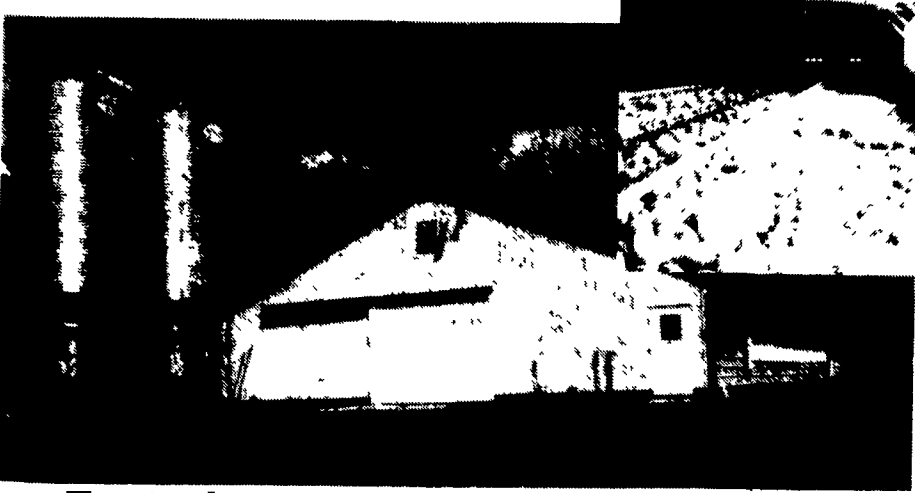
Report supplied by Auction

Thursday, Aug. 15, 1996

RETURN TO FARM CALF 40.00-60.00.
GOOD VEAL: 25.00-39.00.
COMMON VEAL: 10.00-24.00.
CHOICE STEERS: 63.00-67.25.
SELECT STEERS: 55.00-62.00.
COMMON STEERS: 48.00-54.00.
COMMERCIAL COWS: 35.00-42.50; COUPLE 47.00.
CANNERS-CUTTERS: 25.00-34.00.
SHELLS: 17.00-24.00.
CHOICE HEIFERS: 62.00-66.00.
SELECT HEIFERS: 55.00-61.00.
COMMON HEIFERS: 42.00-54.00.
GOOD FEEDERS: 38.00-50.00.
COMMON FEEDERS: 20.00-38.00.
BULLS: 32.00-34.00.
SOWS: 49.75-51.25.
ROUGHES: 38.00-41.00.

Farmer Boy Ag Systems Inc.

THANKS and CONGRATULATIONS TO John Auker Family



of Thompsontown, PA
for choosing
Farmer Boy Ag Systems, Inc.
to construct their new
48' x 500' Tunnel Ventilated
Broiler House!

Featuring:

Umberland
A Division of **ESB**
Feeding Systems

AIRSTREAMER
ventilation systems
A Division of **ESB**
Fans and Controls

Poultry Contact Provided by
FAMERS PRIDE INC.
Fredericksburg, PA

GSI
Feed Bin and Augers

Full Line of Parts in Stock For Your Poultry, Hog and Cattle Needs

Hours: Mon-Fri 7 to 5:30
Sat 7:30 to Noon



24 Hour Service

Farmer Boy Ag Systems Inc.

410 East Lincoln Avenue, Myerstown, PA 17067
717-866-7565 • 1-800-845-3374

Check Our Warehouse Prices



WE SHIP UPS