

USED TRACTORS
"Will buy or trade tractors"



This Week's Special

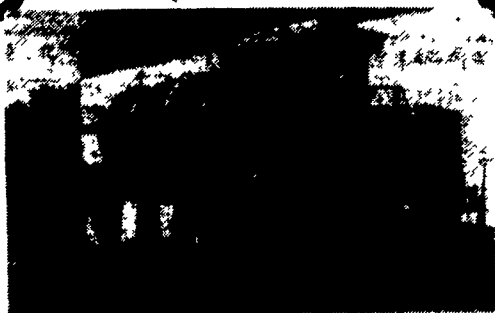
JD 2940 Complete new engine, new paint & excellent condition
\$16,500

- JD 4650 4x4, power shift, New Eng. Exc. **\$38,500**
 - JD 4250 Cab, quad range, 4200 hrs., nice **\$28,500**
 - JD 2555 w/reverser, very nice..... **\$16,500**
 - JD 4430 cab, air, QR trans, 2 hyd..... **\$15,500**
 - JD 2750, 3600 hrs., roll bar & wts., nice... **\$13,900**
 - JD 2550 TSS trans., ind. PTO, like new..... **\$12,800**
 - JD 4430 4 post, Creeper trans., new paint **\$12,500**
 - Case 1845 C Unloader, like new..... **\$12,500**
 - JD 2350 ind. PTO, TSS trans, original..... **\$12,400**
 - (3) JD 2140, 75 hp same as JD 2750..... **\$11,900**
 - JD 4030 4 post, quad range, nice..... **\$10,500**
 - JD 2040 Cab, Ind. PTO Hi-Low, 65 HP.. **\$10,500**
 - JD 4020, Power shift, field ready..... **\$8,800**
 - JD 550, 535 Round Baler, Nice cond..... **\$8,600**
 - JD 2240, ind. PTO, 38" R&P wheels..... **\$7,700**
 - JD 4020 WF, SR trans, new paint, nice.... **\$7,600**
 - JD 3020 Diesel, WF, 2 hyd., diff. lock..... **\$7,500**
 - JD 1130, ind. PTO, hi-low, 45 hp, nice cond... **\$7,200**
 - JD 2130 hi/lo, new motor, 65 hp..... **\$6,900**
 - JD 2030, Ind. PTO, 60 hp, nice cond..... **\$6,900**
 - JD 4020 Diesel, NF, new paint..... **\$6,800**
 - JD 2130 hi/lo ind PTO..... **\$6,800**
 - JD 3010 NF, cab, w/46 ldr..... **\$6,500**
 - JD 1120 ind. PTO, new paint, good cond... **\$6,500**
 - JD 4010 gas, WF, runs good, nice..... **\$5,700**
 - JD 336 Baler w/ 30 ejector..... **\$3,600**
 - Ford 8N, 1952, \$3,200 spent, engine..... **\$2,500**
 - JD factory WF for 3020 thru 4020, new... **\$1,350**
 - JD 47 loader w/valve off JD 2030..... **\$1,000**
 - JD rollbar & canopy for 4020..... **\$775**
 - Green roof and roll bar off JD 2350..... **\$650**
 - JD 18.4x34 snap-on duals, good rubber..... **\$600**
 - JD 4020 or 3020 toplinks brand new..... **\$185 ea.**
- New Woods Dual Loaders in Stock... **20% Off List**

Zimmerman Elevators, Hay Tedders
Wagon Gears & Forage Wagons
Farmco Metal Feeder Wagons, Bale
Bodies & Country Boy Gravity Bins
JD Front & Rear Weights J&L Hay Savers

Reiff Farm Service

275 Goodhart Road, Shippensburg, PA 17257
Interstate 81, Exit 10, 174 East, Goodhart Rd Right
Financing & Trucking Available
Phone or Fax (717) 532-8601



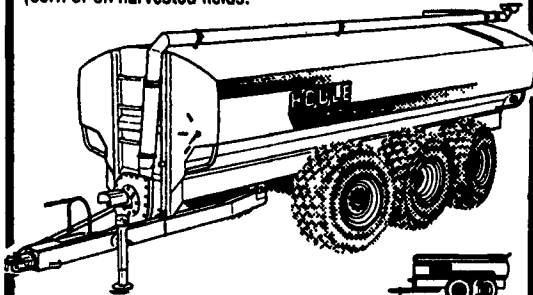
Big A 3500

6V-53 Detroit Diesel Engine
Allison Automatic Transmission
2200 Gallon S.S. Pressure/Vacuum Tank
4 Sunflower Injectors
Very Good Condition **\$29,000**
717-738-1964

LIQUID MANURE SPREADER

WITH FLOTATION TIRES TO MINIMIZE SOIL COMPACTION

Available with complete line of spreading tool bars and precise flow control to spread manure the ecological way eliminating spray drift and reducing odors. Our tool bars are designed to apply hog or dairy manure on growing fields, between rows of corn or on harvested fields.



4-6 OR 8 WHEEL SPREADERS WITH POWER
STRENDS - 3000 TO 9000 US GAL.

SPREADERS WITH SINGLE AXLE OR
TANDEMS - 2300 TO 6000 US GAL.

*"Y" shape bottom for more
complete clean out.

*Standard exterior finish:
epoxy primer and urethane paint.

*Low profile tank for maximum visibility and stability.

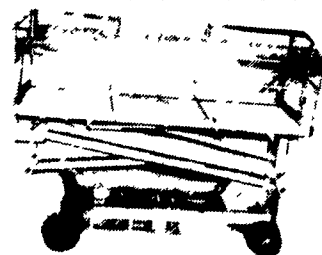
HOULE FARM EQUIPMENT
MANUFACTURER

**TANK SPREADERS IN STOCK
FOR SALE NOW**

"We're Here To Serve You"

SNOOK'S EQUIPMENT

RD 3, Box 130, Mifflinburg, PA 17844
717-966-2736
Ask For Ernest Or Dean



NOT ACTUAL PHOTO

Grove scissors lift to 36', nice cond.
\$6,500
Also, small one to 25', needs work
\$1,200

410-337-3570 Anytime



Int. 2544 w/Loader-Hydro
\$6,200

Taneytown Farm Equipment
410/751-1500

Take Exit 20B
Off Of 83, 5 1/2 Mi. West To
Belmont Farm.



(Not Actual Photo)

JD 4230 from North Dakota
5,700 Hours, Quad, Dual Hyd., 2 Owners **\$9,000**
Financing & Trucking Available

410-833-9091

**Fancy Furrows Farms
AG. EQ. INC.**

610-252-8828
Easton, PA 18040

GEHL NEW IDEA Badger

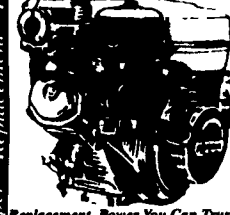
USED EQUIPMENT

- J.D. 6600 Sidehill Combine w/13 ft. Grain Head,
4 Rw. Corn Head
- 2 Badger 950 16' Forage Wagons
- 2 Badger 950 14' Forage Wagons
- Gehl 940 16' Forage Wagon
- Gehl Dump Wagon
- Gehl 3610 Skid Loader 1500 hrs.
- Richerton Silage Table Used One Year.
- New Idea 362 Manure Spreader
- New Idea #10 1 Row Picker
- Massey Ferguson 124 Baler
- Weaverline Feed Cart 430 S.
- Weaverline Feed Cart 330 Rebuilt

- NI 325
(12 row) picker
\$2,950
- NI 323 (1 row)
Nice **\$2,300**
- Gehl 1560 blower.
very nice
\$1,275
- (717) 768-3197**

- JD 80 diesel, excellent
condition.
- Farmalls: C&M, 504
dsl, 1943 H war tractor,
all good condition
- 1980 IH school bus
- MF 3 pt hitch rake
- JD wheel-driven
manure spreader
- Oliver 60 baler
- Oliver Supreme grain
drill
- Papec hammer mill
- NI 405 hay rake
- Papec 1R chopper
- JD Bucket loader for
2-cyl. tractors
- NEW & USED
EQUIPMENT**
- Wilcox
Farm Supply**
- Tunkhannock, PA
Mon-Sat. 8-6
Sun 10-2
717/836-8989

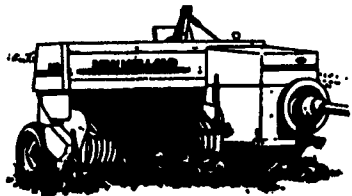
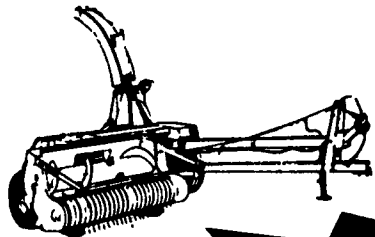
**HONDA
ENGINES**



Replacement Power You Can Trust

G100	2.5 HP	\$234
Gx120	4 HP	\$295
Gx160	5 HP	\$299
Gx200	6 HP	\$350
Gx270	8 HP	\$490
Gx340	10 HP	\$550
Gx380	13 HP	\$570
Gx400	15 HP Rec	\$970
Gx450	18 HP Rec/Lec	\$1017
Gx620	20 HP	\$1025
Gx620	20 hp Rec/Ele	\$1075

Muffler Kits \$125.00
6 to 1 clutch reduction \$795.00
Fuel tank \$50.00
Call for Electric Start Pricing
All Units Have "Oil Alert"
Except 2.2 HP
"FREE" UPS Shipping
Pa. Residents Add
6% Tax - Send Check
With Order To:
**Blue Mt. Small
Engine Service**
1490 Three Sq. Hollow Rd.
Newburg, PA 17240
717-423-5358



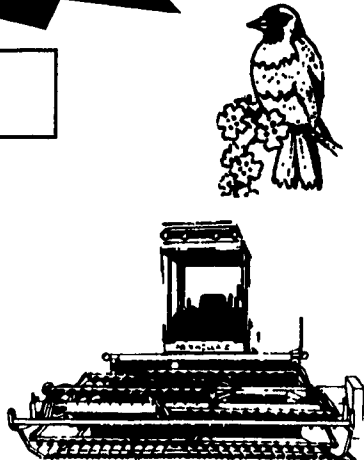
**These Items Must Go
Please Call For
Special Prices**

Special Deals

- NH 492 Haybine
- NH 565 Baler w/Engine
- NH 790 Harvester

- NH 570 Baler w/Thrower
- NH 824 Corn Head
- NH 254 Rake, Demo
- NH 28 Blower
- NH 40 Blower
- NH 492 Haybine
- NH 60 Blower
- NH 456 Mower
- NH 155 Spreader
- NH 816 Forage Box

- CALL FOR PRICES -

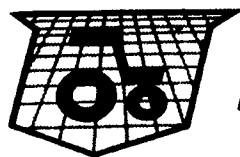


Hay & Forage Equipment - Call For Finance Rates

DEPENDABLE MOTOR CO.

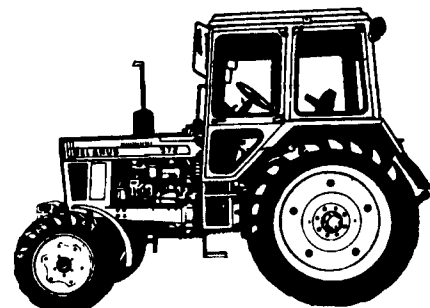
East Main St., Honey Brook, PA.

(610)273-3131 or (610)273-3737



Belarus

**65 HP,
4 WD, Cab
\$15,900
(3 in stock)**



- 85 HP, 4WD, Cab, A/C, 500 Hrs. **\$15,900**
- 65 HP, 2WD, 100 Hrs., **\$8,900**
- 57 HP, 4WD, Loader, 200 Hrs., Cab **\$15,900**

BEVERAGE TRACTOR
Stuarts Draft, Virginia
(800) 296-3325 • (540) 337-1090