

Cook's Question

(Continued from Page B8)

Chocolate Pizza

1½ pounds milk chocolate flavored confectionery coating
 ¾ cup malted milk chips
 ½ pound red confectionery coating
 ½ pound peanut flavored confectionery coating
 ½ pound white confectionery coating
 ½ pound green confectionery coating
 10-inch cake circle or pizza pan
 10-inch pizza box

Mold pepperoni using red coating with a bit of the milk chocolate coating added. Using small rounded mint mold, make 8 pepperoni. Mold mushrooms using peanut coating. Using mushroom mold, make eight mushrooms. Spread melted green coating onto wax paper. When set, cut into pieces for chopped green pepper.

To make crust, mix milk chocolate coating with malted milk chips. Spread onto 10-inch cardboard cake circle or pizza pan. Place pepperoni, mushrooms, and peppers onto crust while it is still soft.

Drizzle entire pizza with white chocolate for the cheese—add extra cheese if desired. To drizzle, use a squeeze bottle with a small hole, a disposable cake decorator bag, or just let it run from a spoon. When crust is no longer soft, place in 10-inch pizza box. Recipe makes two 10-inch pizzas.

Be creative, add sauce; make a peanut flavored crust; mold little fish for anchovies, etc.

Nancy Fasolt
 East Petersburg

ANSWER — Ruth Virginia Erb, Beavertown, wanted a recipe for the starter to Romtoph Friendship cake. She stored her starter in the freezer, but her husband thought it was ice cream topping and ate it. Thanks to Sarah Clark, Breezewood, for sending a recipe that she said if you didn't know it was starter, you'd think it was ice cream.

Starter

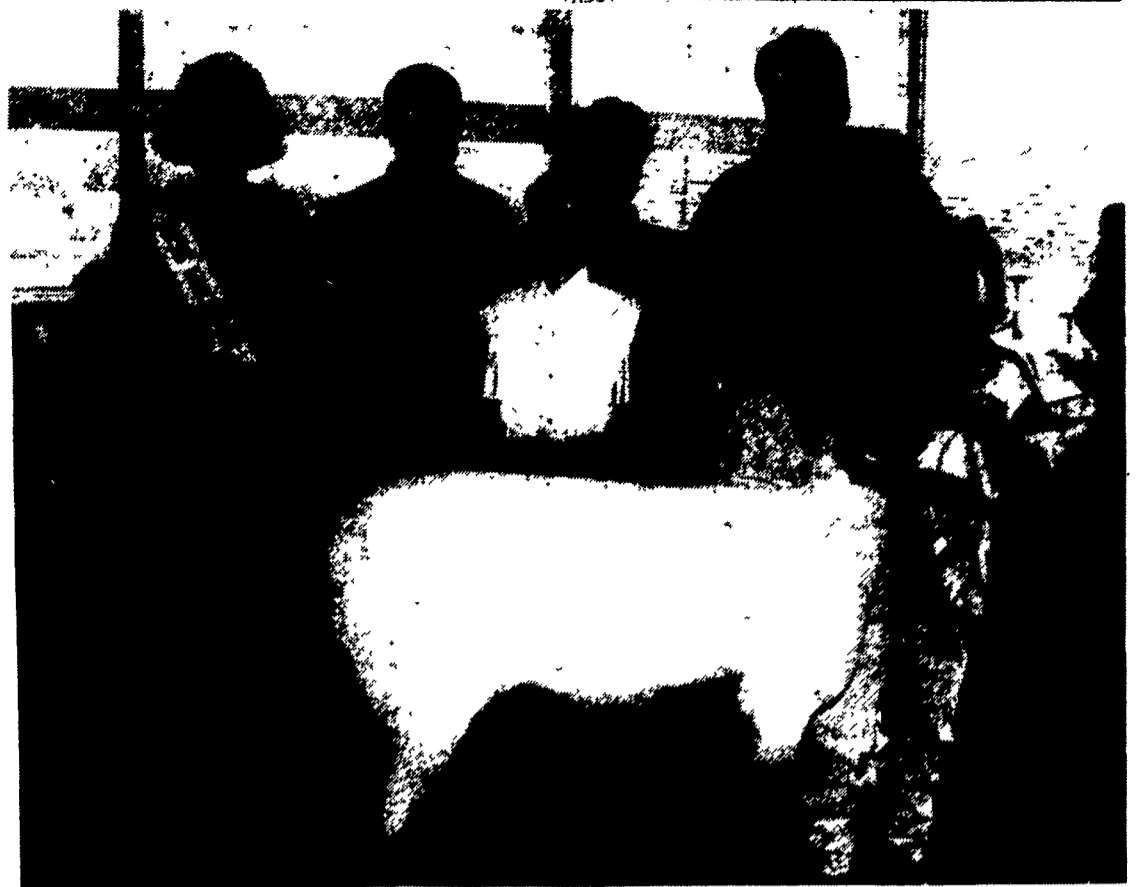
1 cup sugar
 1 cup flour
 1 cup milk

Mix together ingredients for starter. Pour starter into large glass bowl with loose lid or plastic wrap. Day 2, 3, and 4, stir once a day. Day 5 put into bowl, adding 1 cup sugar, 1 cup flour, and 1 cup milk. Days 6, 7, 8, 7, stir once a day. Day 10, add 1 cup milk, flour, and sugar. Stir with mixer. Using three containers, measure 1 cup starter into each container. Give two containers to friends, and make the following recipe or freeze for 3-6 months until ready to use.

Starter Cake

¾ cup oil
 1 cup sugar
 1½ teaspoons baking powder
 3 eggs
 ¼ teaspoon salt
 1 teaspoon baking soda
 2 cups flour
 2 teaspoons vanilla
 1½ teaspoons cinnamon
 1 batch starter mix

Mix together all ingredients. Grease two loaf pans or bundt pan. Bake at 350 degrees for 40-45 minutes or 55-60 minutes for bundt pan. May add 1 cup applesauce or raisins or bananas or nuts or pineapple.



Morgan Firestine holds the halter of a Hampshire ewe, the supreme champion sheep over all breeds at the Lebanon Area Fair. Morgan's parents, Mike and Martene Firestine, and a sister Margeaux, are flanked by Lebanon Area Fair Queen Amy Musselwhite and Judge John Conway.

Hamp Tops Lebanon Breeding Sheep

LOU ANN GOOD

Lancaster Farming Staff

LEBANON (Lebanon Co.) —

In her first year of showing at the Lebanon Area Fair, 10-year-old Morgan Firestine claimed the coveted honor of showing the Supreme Champion of Breeds.

Her Hampshire ewe, named Cookies and Cream, was purchased from Tim and Sarah Fleener of Robesonia whose son Kyle showed the Southdown champion that was also named reserve champion of all breeds.

Morgan, the daughter of Mike and Martene Firestine of Wolmesdorf, previously showed the champion ewe at the Pennsylvania Farm Show where it was named reserve champion of the Hampshire breed.

"I knew she was good, but I didn't know how she would do against other breeds," Morgan said.

Judge John Conway of Newville said that it's a difficult decision to compare breeds and choose only one because each breed has its own particular strength.

He said the toughest decision was between the Southdown champion shown by Kyle Fleener and Morgan's Hampshire. White face breeds are generally more maternal, while black face sheep show more muscle and frame and offer the foundation for breeding stock, according to Conway, who selected the black face sheep as champion.

"It's an outstanding Hamp ewe with muscle, bone, length of body — the most good pieces," Conway said of the supreme champion.

Janine Winebark, 12, was the only one who offered competition to Kyle in the Southdown breed. Kyle took blue ribbons for Southdown yearling ewe, spring and fall ewes, and ram, but Janine's aged ewe was named reserve champion of the breed.

"Although this show doesn't have a lot of numbers, it has the quality that can go on and be competitive in other places," Conway said.

In the Corriedale competition, Benjamin Bow took the championship with his yearling ewe lamb. A second and third in the spring ewe class was shown respectively by

Laura Martin and Darrell Martin. Bow also showed the champion Suffolk with his spring ewe lamb.

In Dorset competition, Leah Bomberger showed a first in the spring ram lamb class and a second in the yearling ewe class that was bested by Ann Leed's yearling ewe for the grand champion title. Ann also showed a spring ewe lamb for the reserve champion. Amber Adams and Becky Spatz placed second and third respectively in Dorset classes.

In the Hampshire division, Morgan had competition from Sue Leed who showed an aged ewe, a first-place spring ewe, and a second-place in the ewe one year and under class, which was then named reserve champion of the Hampshire breed. Morgan's 11-year-old sister Margeaux showed a ewe in the one-year-and under class that placed third. Sisters Erin and Jamie Willard showed spring ewes that placed third and fourth in the class.

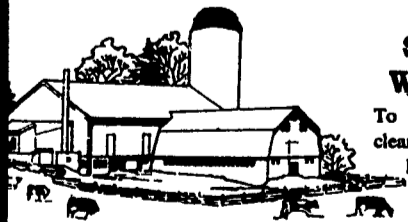
In the Montadale competition, Tisha Epling, who had someone else show her sheep since she was attending classes at Penn State, swept all classes.

WHITENESS with ADVANTAGE FARM WHITE

- DRIES WHITE • NO WET FLOORS
- IS COMPATIBLE WITH DISINFECTANT AND FLY SPRAYS
- DOES NOT RUB OFF EASILY
- WASHES OFF WINDOWS & PIPELINES EASILY

BARN CLEANING SERVICE AVAILABLE WITH COMPRESSED AIR

To have your barn cleaned with air it will clean off dust, cob webs & lots of the old lime. This will keep your barn looking cleaner & whiter longer.



CALL US ABOUT ON THE FARM FLY CONTROL

Serving Southeastern Pa. And More

BEITZEL'S SPRAYING

Witmer, PA 17585 717-392-7227 or

Toll Free 1-800-727-7228 7:00 AM to 5:00 PM

CERTIFIED COMMERCIAL APPLICATORS

LICENSED 32 Years Experience INSURED

5 Trucks For Air Cleaning And Whitewashing
 RADIO DISPATCHED TRUCKS

Barn Spraying Is Our Business, not a sideline.
 Spraying Since 1961



CLOSED SUNDAYS, NEW YEAR,
 EASTER MONDAY, ASCENSION DAY,
 WHIT MONDAY, OCT. 11, THANKSGIVING,
 CHRISTMAS & DECEMBER 26TH

FISHER'S FURNITURE, INC.

NEW AND USED FURNITURE
 USED COAL & WOOD HEATERS
 COUNTRY FURNITURE & ANTIQUES

BUS. HRS. BOX 57
 MON.-THURS. 8-5 1129 GEORGETOWN RD.
 FRI. 8-8, SAT. 8-12 BART, PA 17503

HAY, STRAW,
 PEANUT HULLS
 At farm or delivered in any
 quantity as you require.

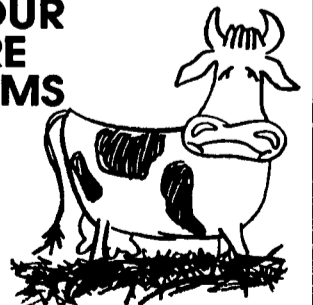
Ebsenshade Turkey Farm

(America's Oldest
 Since 1858)
 Paradise, Pa.
 (717) 687-7631

Since 1972...
 The Original & The Largest
**POURED SOLID
 CONCRETE**

STORAGE
 SYSTEM
 SPECIALISTS

ARE YOUR
 MANURE
 PROBLEMS
 KNEE
 DEEP?



If so,
 call
 Balmer
 Bros.

■ Poured Solid Concrete
 Steel Reinforced Walls.

■ The Wall Is Only As Good As The
 Material Used.

- Manure Pit Walls
- Concrete Decks
- Hog House Walls
- Silage Pit Walls
- Chicken House Walls
- Retaining Walls

Balmer Bros.

CONCRETE WORK, INC.

Invest In Quality - It Will Last A Lifetime

243 Miller Road
 Akron, PA 17501

(717) 733-0353
 8:30 AM - 5:30 PM

(717) 859-2074
 After 6:00 PM