

LANCASTER COUNTY LIVESTOCK MARKET AUCTION

Lancaster County
Weekly

NEW HOLLAND, PA
AUGUST 2, 1996

Cattle Calves

THIS WEEK 2380 1650
LAST WEEK 2260 1708
LAST YEAR 2423 1660

CATTLE: Slaughter steer prices at the beginning of the trading period were generally steady to 1.00 lower, Tuesday's trading brought about steady to slightly firmer prices, however by week's end prices were mostly 1.00-1.50 lower; slaughter heifers were not adequately tested to establish a trend for the week. Cows traded 1.00-2.00 higher at the first of the week only to level off to steady prices for the remainder of the week. Price levels for bulls started off steady to slightly lower, however, as the week progressed prices increased 1.00-1.50. Supply included 47 percent slaughter steers, 4 percent slaughter heifers, 32 percent cows, 6 percent bulls, with the balance feeders.

SLAUGHTER STEERS: High Choice and Prime 2-3 1100/1525 lbs, 64.00-67.75, Choice 2-3 few 4 1075/1425 lbs, 61.50-63.85; high Select and low Choice 2-3 1050/1525 lbs, 57.25-61.00.

HOLSTEINS: Choice 2-3 1150/1675 lbs, 50.25-55.50; High Select and low Choice 2-3 1075/1450 lbs, 43.75-50.75.

COWS: Breaking Utility and Commercial 2-3 36.00-40.00, 40.50-43.75; Cutter and Boning Utility 1-3 30.00-34.00, 34.25-35.75; Canner and low Cutter 1-2 20.00-24.00, 24.50-30.00.

BULLS: Yield Grade 1 1095/1375 lbs, 34.75-39.50, 1400/1575 lbs, 38.50-46.00, 1775/2075 lbs, 38.00-40.75, few fleshy 1095/1525 lbs, 50.00-55.50.

RETURNED TO FARM: Holstein bulls, 90/95 lbs, 55.00-60.00, 100/115 lbs, 60.00-75.00, 115.00-125.00 lbs, 55.00-65.00. Holstein Heifers, 90/100 lbs, 120.00-135.00; 100/110 lbs, 125.00-145.00.

SHEEP: Compared to Monday slaughter lambs were steady to 5.00 higher; slaughter ewes steady to 5.00 lower.

SLAUGHTER LAMBS: Choice 1-2 30/50 lbs, 100.00-140.00, 50/100 lbs, 90.00-110.00.

SLAUGHTER EWES: Utility and Good 1-3 25.00-60.00.

GOATS: All goats sold by the head. Billies: Large 75.00-100.00, few 100.00-125.00; Medium 50.00-70.00; Nannies: Medium and Large 40.00-60.00; Kids: Good and Choice 20.00-40.00.

Lancaster Livestock

JULY 29, 1996

Cattle Calves Hogs Sheep Goats
MONDAY'S AUCTION

670 94 126 555 534

LAST WEEK

697 119 192 604 395

LAST YEAR

641 59 122 524 82

CATTLE: Slaughter steers steady to mostly 1.00 lower; slaughter heifers not adequately tested to establish a trend; cows generally 3.00 lower, except Breaking utility steady to 2.00 higher; bullocks scarce; bulls generally steady to 1.00 higher. Supply include 62 percent slaughter steers, 11 percent slaughter heifers, 13 percent cows, with the balance bulls.

SLAUGHTER STEERS: High Choice and Prime 2-4 1150/1400 lbs, 64.00-67.75; Choice 2-3 few 4 1075/1450 lbs, 61.00-64.75; Select and low Choice 2-3 1050/1450 lbs, 57.00-60.75.

HOLSTEINS: High Choice and Prime 2-3 1200/1550 lbs, 57.50-59.60; Choice 2-3 1200/1500 lbs, 54.50-56.85; Select and low Choice 2-3 1250/1625 lbs, 45.00-53.25.

COWS: Breaking Utility and Commercial 2-3 36.00-40.00; 40.00-42.50; Cutter and Boning Utility 1-3 28.00-32.00; Canner and Low Cutter 1-2 24.00-26.50.

BULLS: Yield Grade 1 1300/1590 lbs, 37.25-42.50, few 43.00-47.00; 1600/2000 lbs, 40.25-44.25, couple 46.25-48.75; 2080/2700 lbs, 38.75-41.75.

CALVES: Vealers generally steady; slaughter calves steady to 5.00 higher.

VEALERS: High Good and low Choice 80/100 lbs, 5.00-15.00.

SLAUGHTER CALVES: Good and Choice 150/300 lbs, 50.00-70.00, 300/400 lbs, 45.00-55.00, 500/600 lbs, 40.00-50.00, some 600/700 lbs, 45.00-48.00.

RETURNED TO FARM: Bulk 80/100 lbs, Holstein bulls and heifers 35.00-45.00.

BARROWS AND GILTS: Small supply barrows and gilts 2.00 lower. US 1-2 220/260 lbs, 61.00-62.50.

SOWS: US 1-3 400/500 lbs, 44.00-46.50; 500/600 lbs, 46.00-47.50.

BOARS: 300/500 lbs, 37.00-38.75.

SHEEP: Slaughter lambs steady to mostly 8.00 high slaughter ewes steady to 10.00 higher. Supply included 70 percent slaughter lambs, with the balance slaughter ewes.

SLAUGHTER LAMBS: Choice 1-2 40/60 lbs, 95.00-115.00, 60/70 lbs, 100.00-105.00, 70/80 lbs, 98.00-104.00, some 80 lbs and up traded 95.00-105.00.

SLAUGHTER EWES: Utility and Good 1-3 30.00-60.00, some 70.00.

GOATS: All goats sold by the head; Billies: Large 90.00-140.00; Medium 70.00-90.00; Nannies: Medium and Large 50.00-70.00; Kids: Good and Choice 40.00-60.00, few 20.00-40.00.

Vintage Livestock

PARADISE, PA

JULY 30, 1996

Cattle Calves Sheep Goats

TODAY

587 950 10 0

LAST TUESDAY

536 999 5 1

LAST YEAR

591 1015 3 0

CATTLE... USDA ... Supply included 34% slaughter steers and 56% cows ...slaughter steers steady to mostly .75 higher, sl. heifers not adequately tested, cows generally steady, bulls steady to 2.00 lower in light test.

SLAUGHTER STEERS: High Choice and Prime 2-3 1150/1550 lbs, 64.50-68.50, few 69.00-69.50, Choice 2-3 1150/1550 lbs, 61.75-64.00, Select and Low Choice 2-3 1100/1525 lbs, 57.25-60.75.

HOLSTEINS: High Choice and Prime 2-3 1275/1500 lbs, 56.75-61.75, Choice 2-3 1375/1525 lbs, 53.25-56.25.

COWS: Breaking Utility and Commercial 2-3 bulk 36.00-40.00, high dressing 40.75-44.75, Cutter and Boning Utility 1-3 bulk 28.00-33.75, Canner and Low Cutter 1-2 low dressing 20.00-24.00, bulk 24.50-30.00.

BULLS: Yield Grade No. 1 1420/1560 lbs, 36.00-38.25, 1600/2080 lbs, 34.00-37.25.

CALVES...Vealers generally steady. Supply included 779 in graded sale of which 82% sold to return to farm.

VEALERS: Good 100/265 lbs, 17.00-30.00, High Good and Low Choice 80/110 lbs, 10.00-17.00, Standard and Low Good 60/95 lbs, 5.00-10.00.

RETURNED TO FARM: 107 head 111/123 lbs. Holstein bulls 52.00-68.00, 169 head 102/103 lbs, 60.00-68.00, 70 head 95 lbs, 57.00-60.00, 70 head 90/92 lbs, 33.00-36.00, 45 head 80/85 lbs, 19.00-21.00, 165 head small frame 82/112 lbs, 18.00-25.00; 25 head 95/114 lbs. Holstein heifers 137.00-199.00, 10 head 90 lbs, 80.00, 21 head 72/82 lbs, 50.00-60.00, 20 head small frame 60/108 lbs, 30.00-45.00.

SHEEP...TOO THIN TO ESTABLISH A MARKET TEST!

GOATS...NO MARKET TEST!

Lancaster Livestock Auction

Wednesday's market report has been discontinued until further notice because of insubstantial receipts.

VA

Feeder Sales

ORANGE, VA

JULY 31, 1996

Feeder Cattle 234 head Steers 106 head Medium and Large 1 Small 1 Medium and Large 2 300-400 60.00 - 400-500 50.50 - 54.00 37.50 - 44.00 - 500-600 46.50 - 52.50 - 40.50 600-700 45.00 - 46.50 - 42.50 - 43.50 700-800 42.00 - 48.00 - 43.50

WYTHEVILLE, VA

JULY 30, 1996

Feeder Cattle 179 head Steers 61 head Medium and Large 1 Medium and Large 2 400-500 38.00 - 51.00 - 500-600 48.00 - 50.00 44.00 600-700 44.00 - 56.50 40.00 - 47.50 700-800 52.00 - 58.00 - 800-900 49.00 - 58.00 -

BLACKSTONE, VA

JULY 31, 1996

Feeder Cattle 215 head Steers 60 head Medium and Large 1 Medium and Large 2 500-600 - 48.50 - 54.50 600-700 49.00 - 56.00 42.50 - 54.00 700-800 - 45.00 - 47.00

BLACKSTONE, VA

JULY 29, 1996

Steers 279 head Medium and Large 1 Small 1 Medium and Large 2 300-400 - 44.00 48.50 - 51.50 400-500 51.50 - 56.50 47.00 46.00 - 52.00 500-600 54.00 - 56.00 49.50 47.00 - 54.50 600-700 52.25 - 56.00 45.00 47.00 - 55.50 700-800 55.00 - 56.00 40.50 54.75 800-900 52.25 - 53.50 - 53.25 - 54.75 900-1000 45.00 - 48.50 - -

Jersey Shore Livestock Market, Inc.

Auction every Thursday

at 4:00 p.m.

Jersey Shore, Pa.

Report supplied by Auction

Thursday, Aug. 1, 1996

RETURN TO FARM CALF 40.00-92.50.

COMMON VEAL: 10.00-38.00.

CHOICE STEERS: 62.00-65.50.

SELECT STEERS: 52.00-61.75.

COMMON STEERS: 45.00-50.00.

COMMERCIAL COWS: 34.00-39.50.

CANNERS-CUTTERS: 25.00-36.75.

SHELLS: 15.00-24.75.

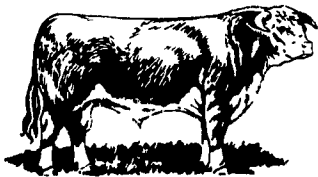
CHOICE HEIFERS: 60.00-65.00.

SELECT HEIFERS: 57.00-62.75.

COMMON HEIFERS: 35.00-46.00.

COMMON FEEDERS: 28.00-55.00.

BULLS: 34.00-37.75.



QUALITY FEEDER CATTLE

Financing Available

* Fixed Interest Rates • Interest Due when Cattle Are Sold • No Monthly Payments

SCARFF BROS. INC.

Cattle Dealers • Licensed & Bonded

2300 Fallston Road • Fallston MD 21047

Lance N. Scarff
Farm (410) 877-0370
Fax (410) 877-7802

C. Howard Scarff, II
Home (717) 445-4355
Fax (717) 445-7237
Mobile (717) 940-2633

W. Conly Scarff
Home (410) 838-5883
Mobile (410) 790-2650

Contract Feeding Programs • Marketing of Finished Cattle • Dairy Heifers

HAY, STRAW, & CORN

— SALE —

Sale Starts
Every Friday At 10 AM

GREEN DRAGON MARKET & AUCTION

955 N. State St.
Ephrata, Pa. (717) 738-1117
1 mile North of Ephrata on N. State St.
Out of State Buyers-Cash or Certified Check Only



B&R CATTLE CO

RD 1, Marietta, PA
17547
Office Phone:
(717)653-8164

Specializing in
Stockers &
Feeders

JOHN BOWMAN
(717)653-5728

RON RANCK
(717)656-9849

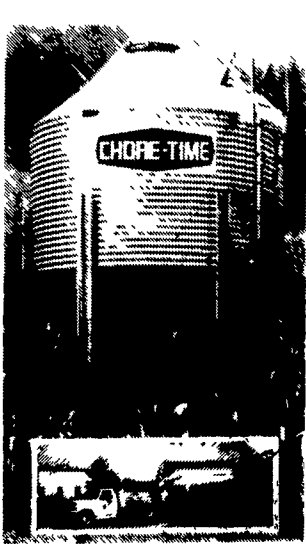
KIRKWOOD HAY AUCTION

Hay, Straw and
Grain Auction
EVERY TUESDAY
11:00

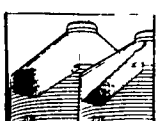
Located Rt 472 5 miles
south of Quarryville or 6 miles
north of Oxford corner of Rt.
472 and Noble Road.

Lloyd H. Kreider,
Auctioneer
AU-000513L
No out of state checks

Get more capacity and better service from Chore-Time's New Next Generation bin



Call for pricing on bins assembled and delivered to your farm



High Capacity 40° roof (left) allows more storage and stays cleaner than conventional 30° roof (right)



Hydro-Shield™ Weather Guard prevents water from running down hopper



ACCESS PLUS™ permits easy clean out of the bin from the ground.

Contracts available call for information

- Breeder
- Pullets
- Turkey
- Hog

Call for our free brochure
"What is contract production?"

Replace your bulbs and
save electricity with
SCREW IN FLUORESCENT LIGHTS
5-7-9
Watts 5 49 ea. | 13
Watts 5.79 ea.

Light Bulbs
25 to 100 Watts
34¢ Ea.
Brass Base - 5000 Hrs.

In Stock-36" & 48" Wide Kraft Paper
Authorized Master Distributor Since 1982

Northeast Agri Systems, Inc.
Flyway Business Park
139A West Airport Road
Lutz, PA 17543
Ph (717) 569-2702
1-800-673-2580



Made in USA

Delmarva Store
306 University Ave
Federalsburg, MD
(Formerly Long Lumber)
1-800-738-6361

VINTAGE SALES STABLES, INC.

SALE TUESDAYS

10:30 A.M.

SLAUGHTER CATTLE AUCTION-
STEERS, BULLS, HEIFERS,
COWS, FEEDER CATTLE

6:30 P.M.

CALVES, SHEEP, GOATS
•GET CALVES IN EARLY-
OUR STATE GRADER
STARTS AT 10:30 A.M.

Selling Feeders Every Tuesday
At Approx. 1 PM

FOR MORE INFORMATION CONTACT

L. ROBERT FRAME, SR., PRESIDENT
BUS (717) 442-4181 BUS (717) 768-8204
HOME (215) 458-8518
IRWIN MARTIN, FIELD REP.
(717) 733-7434
KENNETH E. HERSHEY, FIELD REP.
(717) 442-4874

TRUCKING SERVICE
AVAIL-LOCAL &
LONG DISTANCE
(RT. 30, 10 MILES EAST
OF LANCASTER IN
PARADISE, PA)

