



Philadelphia Fruit Market

PHILADELPHIA
JULY 31, 1996

Trading on the Philadelphia Produce Market for Wednesday, July 31, 1996 was slow. Offerings were adequate. Prices for beans, blueberries, film bag carrots and strawberries were higher, while prices for green cabbage, cantaloups, corn, honeydews, parsley, peppers and zucchini squash were lower. Prices for others were about unchanged. Here is the preliminary report: Asparagus — 11-lb cartons bunched Mexico too few to quote Bananas — 40 lb cartons imports 11.00 fair quality 9.00-10.50 small 7.00-9.50 Beans — crts PA mostly 8.00 N.Y. 11.00 Beets — crate bunched 12s OH 7.00 Blueberries — 12-pint cups with lids N.J. medium-large 11.00-12.00 Broccoli — cartons bunched 14s Calif. 8.00-9.50 Maine 5.00-6.00 Cabbage — 1-3-4 bushel cartons-crates medium green PA 11.00-12.00 N.Y. 11.50-12.00 Canada 11.00-12.00 red type: N.J. and Canada 8.00-9.00 savoy type: Canada 10.00-11.00 Cantaloups — 1-2 cartons Calif. 12s 7.00-9.00 15s 7.00-8.00 18s 7.00 Carrots — 48-1 lb film bags medium-large Calif.

mostly 13.00 50-lb sacks loose jumbo Calif. 14.00-16.00 Canada 13.50 Cauliflower — cartons film wrapped 12s 8.00-10.00 Celery — cartons Calif. 2 doz mostly 12.00 2 1-2 doz mostly 12.00 Corn — wirebound crates 4 doz minimum White N.J. 10.00 PA 10.00 Va 10.00 Yellow Too few to quote Cucumbers — 1-1-9 bushel cartons-crates N.Y. medium 12.00-14.00 PA 12.00-14.00 Endive — 1-1-9 bushel cartons-crates OH 8.00 Escarole — 1-1-9 bushel cartons-crates OH 8.00 Grapes — 19-lb lugs bag Calif. Thompson Seedless small-medium 12.00-14.00 medium-large 14.00-15.00 Flame Seedless medium-large 13.00-15.00 medium 12.00-13.00 21-lb lugs Calif. Thompson large 18.00 medium-large 15.00-16.00 Flame Seedless medium-large 18.00 medium 14.00-14.50 Greens — crts/ctns bunched N.J. collards 6.00-7.00 kale 6.00-7.00 rape 8.00 mustard 8.00 turnip tops 8.00 Honeydews — 2-3 cartons Calif. 5s 6.00-8.00 6s 6.00-8.00 Leeks — cartons/crates bunched 12s N.J. 7.00-8.00 Lettuce-Iceberg — cartons 24s Calif. 9.00-11.00 Lettuce-Others — cartons-crates 24s green leaf CA 10.00-12.50 OH 6.00-7.00 red leaf Calif. 10.00-12.00 OH 6.00-7.00 boston OH 8.00 bibb OH 6.00 Lettuce-Romaine — cartons 24s Calif. 10.00-12.00 Canada 7.50

Mushrooms — Pa. 4-qt basket medium-large 5.00-5.50 small-medium 4.00-4.50 10-lb carton medium 9.50-10.50 large 12.00-12.50, Packages 10-12-oz. 9.50-10.00 5-lb carton Oyster 20.00-22.50 3-lb Shiitake 13.00-15.00 fair quality 10.00-12.50 Onions-dry — 50-lb sbs Yellow Grano Type Jumbo New crop Yellow rano jumbo N.M. 8.00-9.50 Calif. 9.00-10.00 TX 10.00 Red Type 25-lb sbs Calif. jumbo 14.00 medium 10.00-12.00 50 lb ctns GA granex type jumbo 25.00-28.00 Onions-green — cartons bunched 48s N.J. 8.00 OH 9.00 Calif. 9.00 Parsley — carton bunched 60s curly OH mostly 10.00 plain OH mostly 10.00 Peaches — 25 lb cartons NO GRADE MARKED N.J. Topaz 2 1-2" up 14.00-15.00 Peppers — 1 1-9 bushel cartons N.J. exlarge 7.00-8.00 large 7.00 medium 5.00-6.00 Potatoes — 50-lb cartons Burbank ID 70s 13.00-14.50 80s 11.00-13.00 90s 10.00-11.00 100s 8.50-10.00 50-lb sbs NEW CROP Round White VA 7 00 large 9.50-10.00 DE 6.50-7.00 sz B 00 large 9.00-9.50 Round Red NEW CROP DE sz A 10.00 sz B 12.00-13.00 VA sz A 10.00-12.00 sz B 15.00-16.00 Radishes — cartons topped red 30-6oz film wrapped OH 5.00-7.00 cartons bunched 24s OH 24s 8.00 Spinach — Flat type crates bunched 24s Calif 11.00 Savoy type bushel baskets CO clipped 15.00 Squash — 1-2 & 5-9 bushel cartons/crates N.J. Zucchini small-medium 8.00 medium 5.00-6.00 Yellow Straightneck too few to quote Strawberries — 12-1st

flats Calif. medium-large 8.00-10.00 Sweet Potatoes — 40 lb cartons N.C. Jewel type cured medium 17.00-18.00 Tomatoes — 25-lb cartons 85% USone or better light red to red TN exlarge 10.00 large 10.00 Calif. large 10.00 VA. exlarge 10.00 large 9.00-10.00 Vine Ripes N.J. large 12.00-14.00 medium 7.00-8.00 Plum type Calif. 10.00 N.C. 8.00-10.00 Cherry type 12-1 pint baskets Mexico 11.00 Calif. 11.00-12.00 Turnips — 25-lb sbs N.J. 5.00-6.00 Watermelons — bins per melon MD Crimson Sweet 28-30 lb 3.00 N.C. and VA Sangria 20-22 lb avg 2.00 22-24 lb avg 2.25 22-24 lb avg 2.50 MD Crimson Sweet 25-28 lb avg 2.50-3.00

CANTALOPES: LOCAL MED. TO LRGE. 30-1.40 EACH.
CORN: WHITE AND YELLOW 1.45-2.60 DOZ.
CUCUMBERS: 2.50-12.00 1/2 BU.
EGGPLANT: 4.25-6.50 1/2 BU.
NECTARINES: 10.00-14.50 1/2 BU.
PEACHES: WHITE AND YELLOW 5.50-17.50 1/2 BU.
PEPPERS: 3.50-8.00 1/2 BU.; HOT 6.00 1/2 BU.
PICKLES: SM. TO MED. 5.00-17.00 1/2 BU.
PLUMS: 4.50-12.50 8 QTS.
POTATOES: NEW 4.00-8.00 1/2 BU.
RED BEETS: 6.75-10.00 1/2 BU. CUT.
SQUASH: PATTYPAN 2.00-5.50 1/2 BU.
TOMATOES: LOCAL SM. TO LRGE. 7.00-20.00 1/2 BU.
WATERMELONS: YELLOW DOLLS 1.70-1.90.
ZUCCHINI: 2.50-6.00 1/2 BU.
FLOWERS BY THE POT: HIBISCUS 4.25; ROSES 7.50-8.00; PERENNIALS MIXED 1.75-3.75; HANGING BASKETS 2.50-5.50; CUT GLAIOLAS .40-.52 STEM.

Leinbach's Shippensburg Produce Auction

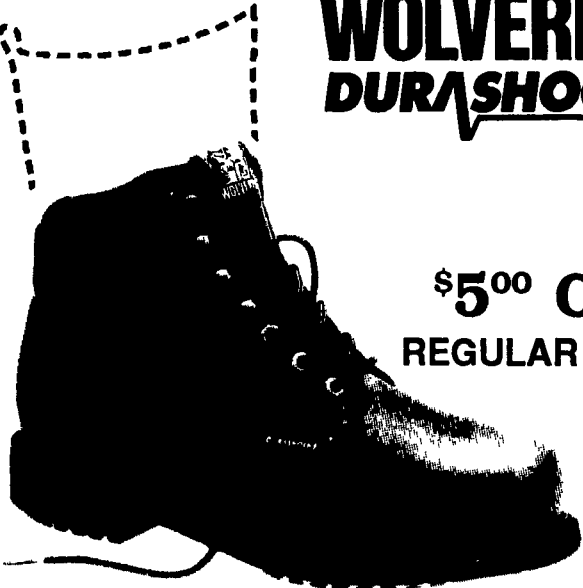
Shippensburg, PA
Average Prices Of #1 Produce
July 25, 26, 29 and 30
Price Differences are Quality, Size or Days
Open 10 a.m.
Report Supplied by Auction
APPLES: LODI, PAULA RED, MACINTOSH AND TRANSPARENT 3.00-6.50 1/2 BU.
APRICOTS: 7.00-14.25 8 QT FLAT.
BEANS: GREEN AND YELLOW 4.50-12.00 1/2 BU.
BLUEBERRIES: 13.50-17.00 12 PINTS.
CABBAGE: 8.50 50 LBS.

SOUTHERN PRODUCE
CANTALOPES: SM. TO LRGE. .40-2.35 EACH.
CORN: SWEET 1.65-2.10 DOZ.
TOMATOES: 8.00-15.50 25 LB. BOX.
WATERMELON: 1.15-3.70 EACH;
SUGAR BABIES 1.85-2.30; SEEDLESS .85-2.70 EACH.
SALF DAYS ARE MON., TUES., THURS., FRI. AND SAT. AT 10 A.M.

37TH ANNIVERSARY SALE • AUGUST 7, 8, 9, 10

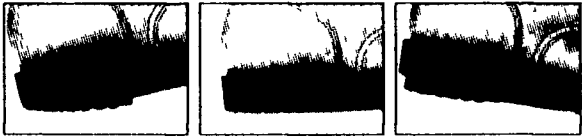
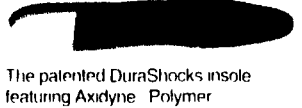
GUARANTEED TO BE THE WORLD'S MOST COMFORTABLE BOOT.

WOLVERINE DURASHOCKS



\$5⁰⁰ OFF REGULAR PRICE

Try on a pair of Wolverine DuraShocks. We guarantee they'll be the most comfortable boots you've ever worn. Or return them within 30 days and get your money back. DuraShocks, the only boots with the patented sole that absorbs foot shock and the cushioned insole with Axidyne[®] heel pad that reduces foot fatigue. Made in U.S.A.



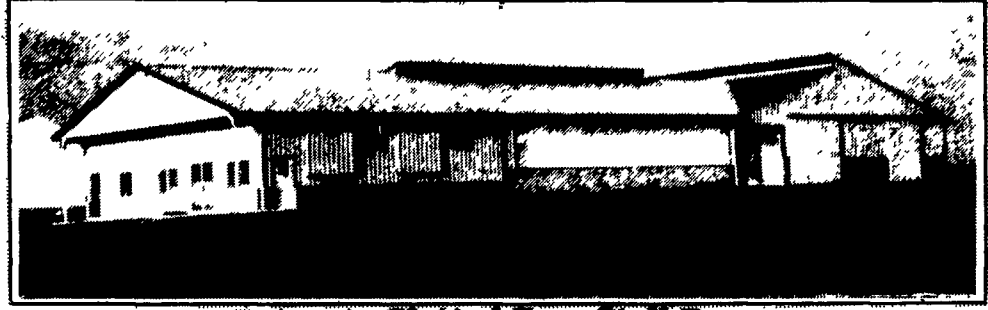
Compression pads absorb shock to cushion the foot

Over 40 Styles To Select From: Insulated, Steel Toe, Etc.

Weaver's Store, Inc.
FIVEPOINTVILLE, PA • (717) 445-6791

KEYSTONE CONCRETE PRODUCTS INC.

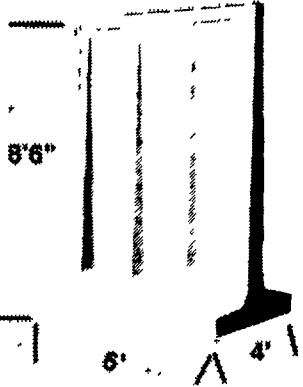
477 East Farmersville Rd.
New Holland, PA 17557
(717) 355-2361



Concrete Slatted Free Stall Barn



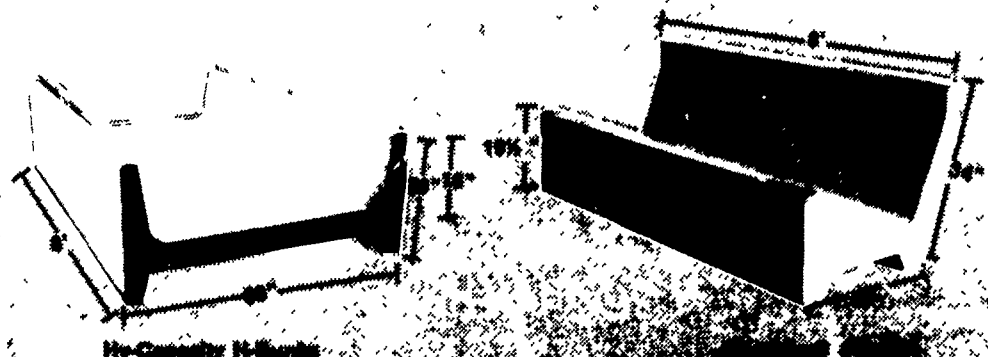
Long Core Cattle Waste Slats



Outside T-Wall Bunker Silo Sections



Slatted Beef Barn



High Capacity H-Bunk