

**7 LIVESTOCK EQUIPMENT**

**NOW AVAILABLE FOR PICK-UP, DELIVERY OR U.P.S. SHIPMENT**

All Of Our Products Are Available In The Following Sizes:  
5 Gal. Bucket, 55 Gal. Drum, 275 Gal. Tote, or Bulk (empty containers also for sale)

**LIQUID**

**MOLASSES:**

- makes feed more palatable
  - tempts their tastebuds
  - cow gains more energy
  - reduces dust
  - improves cows appetite
- (Dry molasses available in 50 lb. bags)



**CORN & SOYBEAN OILS - For Animals**

**BREWEX - For Use In Dairy Feeds**

BREWEX is used extensively in complete dairy formulations to contribute utilizable energy. It is a price/performance value when used in dry feeds, liquid feeds and on-farm mixes.

**NATIONAL HORSE PRO - Liquid Feed Supplement**

**SWEETCAKE 16NU - Feed Supplement Blocks For The Livestock Industry. Available In 200 Lb. Size**

CALL TOLL FREE: 1-800-327-4406

**ZOOK MOLASSES CO.**

Main St., Box 160 Honey Brook, PA 19344  
HOURS: Monday-Friday 7 AM - 5 PM  
Over 60 Years Of Service

We U.P.S Daily

**L.B. FENCING**

305 Good Road, East Earl, Pa. 17519  
717-445-4764 Luke Burkholder



Specializing In All Types Of High Tensile Fence  
Stream Bank Fencing - Supplies And Installation  
All Types Of High Tensile Supplies Sold

**High Tensile Wire**

- Certified Tensile Range 200,000 Psi
- Class III Galv. 4,000 Ft. Rolls
- In Line Strainers, Spring Loaded
- In Line Strainers w/o Spring
- Strainer Handle (Zink Plated)
- 4" Tube Insulators (200 pk)
- 20" Wrap Around Insulators (10 pk)
- C2L Double Crimp Sleeves (100 pk)
- 50 lb 1 1/4" Class III Galv. Barbed Staples
- 50 lb 2" Hot Dipped Galv. Staples
- 10-47-6-11 Woven Wire Fence (330 Ft.)

**Fence Posts**

C.C.A. Pressure Treated (30 year)  
Pressure Treated Board Fence Available

- 4 to 5"x6'6"
- 4 to 5'8"
- 5 to 6"x6'6"
- 5 to 6"x7'
- 6 to 6'8"
- 6 to 7"x6'6"

Good Supply In Stock For All Sizes

We Ship U.P.S or Deliver Prices F.O.B.

Heavy Duty Post Drivers For Sale By L.B. Fencing

- 3 Pt. Hook-up
  - Skid Loader Mounts
  - In Stock Ready For Delivery
- Call For Price

717-445-4764

- Split Rail
- Post & Board
- Hi-Tensile Supplies
- Chain Link & Fittings
- P.V.C. & Vinyl Coated
- Installation Available
- Poly Coated Centaur
- Electric Safe Fence
- Wood & Tube Gates
- Woven Horse Wire
- Dog Kennels
- Locust & Pressure Treated Post

**ESCH'S FENCING**

Since 1987

222 Octorara Trail, Rt. 10  
Gap, PA  
610-857-1676



5192 Mine Rd., Kinzers, PA 17535  
Call Between 6:00 & 7:00 p.m.  
717-442-8486

**A & J FENCING**

All Types Of Fencing  
\* High Tensile \* Post & Board  
\* Cross Board  
\* American Wire  
\* Woven Wire \* Etc.  
We Also Do Post Driving

**"GOOD FENCE/GOOD NEIGHBORS"**

Specializing in HIGH TENSILE Fence Installation Since 1979

Plus Installation of:

- Split Rail • Board • Woven Wire • 2x4 Wire
- Diamond Mesh • Streambank Fencing
- Deer Control & Containment Fencing

**Ag FENCE**



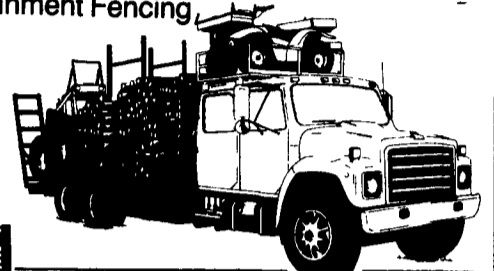
P.O. BOX 168, HOPELAND, PA 17533 • (717) 738-4774



HORSE HIGH



BULL STRONG



Rd. 1 Box 150-A  
Beaver Springs, PA  
17812



Elon Martin  
James Miller

- Split Rail
- Board Fence
- Hot Dip Galv. Heavy Duty Gates



Fence For

- Horses
- Cattle
- Sheep
- Deer Control

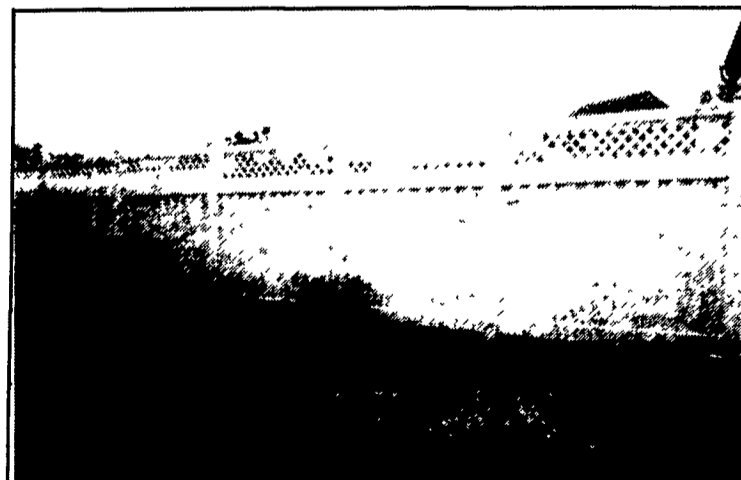
Specializing in High Tensile Wire Installations

CALL TODAY FOR FREE ESTIMATE

717-658-2033

1-800-433-6236

**VINYL FENCE HEADQUARTERS**



LARGE VARIETY OF FENCING PRODUCTS IN STOCK:

- Picket Fences
- Privacy Fences
- Yard Fences
- Horse Fences
- Porch Railings
- Specialty Products

CALL US FOR LOCATION OF THE DEALER NEAREST YOU!

**QUALITY FENCING AND SUPPLY**



QUALITY Our First Desire In Serving You!

622 NORTH SHIRK RD.  
NEW HOLLAND, PA 17557

717-355-7100

800-633-7093