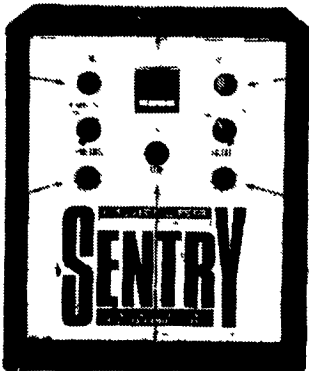


Used Patz barner chain counter clockwise 3.50 per ft. NuPulse milker units, \$85.00. Call (717)933-4112.

Westfalia Vistron pulsators, well maintained. Best offer. Bradford County. Call early mornings or evenings, (717)364-5460.

FOR MORE INFORMATION ON COOLING CONTROL, CHECK HERE.

OR HERE. Blue light flashes to indicate which cooling units are engaged



OR HERE. Amber lamp shows wash, rinse, or sanitize cycle

OR HERE. Green lamp indicates current agitation cycle

OR HERE. Red light flashes when milk is above 43°F or below 35°F

The new Mueller® Sentry™ is the only refrigeration control system that gives you all the information you need to monitor your milk cooling and cleaning functions at a glance. And Sentry allows you to control and customize all cycles to fit your milking schedule. With Sentry, cooling control has finally entered the Information Age

THE MILK COOLING SYSTEMS SPECIALISTS®

GOOD USED TANKS

- 500 Gal M
- 600 Gal. M
- 1000 Gal. O
- 1000 Gal. OH
- 2500 Gal. OH

Trust! We Work At It. AUTH. MUELLER DEALER

PRIEST'S REFRIGERATION

20205 Marsh Haven Lane, Hagerstown, MD 21742
301-797-3921
24 HOUR SERVICE

USED TANKS

- 2500 Gal. Mueller OH
- 2000 Gal. Surge
- 1500 Gal. Zero
- 1000 Gal. Mueller O
- 1000 Gal. Mueller O
- 800 Gal. Mueller OH
- 800 Gal. Mueller OH
- 625 Gal. Sunset
- 600 Gal. Mueller M
- 500 Gal. Mueller M

Hagerstown, MD
301-797-3921

NEW SPUTNIK

- w/12" Lid opening
 - Large wheels
 - Heavy duty construction
 - 330 pound capacity
- Has passed U.S. Board of Health and PA. Dept. of Agriculture Inspection



The Conde Sputnik, including its heavy duty under-carriage, is constructed entirely of quality 300 stainless steel. The Sputnik carries a one year guarantee against factory defects.

Daniel Beller 78 South Maple Avenue, Leola, PA 17540

Call Us For A Good Selection Of Milking Equipment - Priced Right!



- Bio-Milkers Available
- (10) Westfalia Metatron Milk Meters
- 575 Gal. Sunset Bulk Tank w/compressor
- (1) Surge 75 Vacuum Pump
- 600 Gal. Mojonnier Tank
- 500 Gal. Girton Tank
- Boumatic 2" Pipeline, Complete
- (8) Boumatic 65 Lb. Weigh Jars
- Boumatic DB2000 Vacuum Pump
- Surge 75 Vacuum Pump
- Used Sputnik

We Ship Parts Daily UPS

24 HOUR SERVICE

ON THE FARM ROUTE SERVICE

Fisher & Thompson Inc.

DAIRY & MILKING EQUIPMENT SALES & SERVICE



MAIN OFFICE
15 NEWPORT RD.
LEOLA, PA 17540
717-656-3307

MIFFLINBURG SALES CENTER
RD 2 BOX 265
WABASH RD.
MIFFLINBURG, PA 17844
717-966-3900

NORTHERN SERVICE CENTER
RD 1 BOX A-107
BELLEVILLE, PA 17004
717-667-6291

AMOS FISHER

RICK THOMPSON

MERLE RESSLER

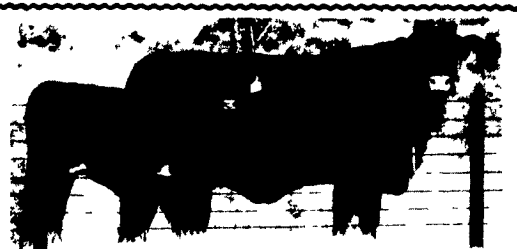
LIVESTOCK EQUIPMENT

2 horse bumper trailer, good condition, \$750. After 5, (717)993-6692.

81' Patz belt feeder, Farmer TMR mixer, Peerless 24" roller mill. (717)275-1738.

Cedar Fence Posts, 5"D, 8'L, \$4.75/each. 717/354-3105.

FREE GUIDE - TENSILE FENCE, Strong - Lasting - Economical; also portable electric fence. Phone Order Supplies 1-800-245-6902 & (412-459-8991).



DURA FENCE

Call Today For Reasonable Prices On High Tensile - Split Rail - Board Fence Free Estimates

R.D. #1 Box 210 Beaver Springs, PA 17812 Robert Martin (717) 658-4470

FENCING

- High Tensile
- Split Rail
- Board Fencing
- Wire Mesh Horse Fence
- PVC Fencing
- Material or Installation

Wholesale & Retail

Check Our Prices

Before You Buy,

Call New Holland Fence 717-656-9596



G&G INDUSTRIES

242 Buchanan Drive Ephrata, PA 17522 717-733-9396

Vinyl Horse Rail and Yard Fencing - Decks & Docks

Warehouse: 469 N. Reading Road (Rt. 272 North), Ephrata, PA

ASK ABOUT OUR OTHER TYPES OF FENCE!

RUBBER MATS

for Comfort Stalls, Free Stalls, Horse Stalls, Horse & Cattle Trailers, Hog Houses. Used Belting Material

Welsh Hill Farm Supply

Paul N. Brubacher 610-286-5298 or
Raymond 610-286-0168
Glenn 610-286-0706

KENCOVE FARM FENCE

111 Kendall Lane, Blairsville, PA 15717

FREE GUIDE

1-800-245-8902

"TENSILE FENCE"

412-459-8991

Crimp Tool - 4 Slot

\$49

12-1/2 Gauge Crimp Sleeve \$9/Per Hundred



STALL MATS

All rubber mat totally designed for animal comfort.

Ask about our different sizes Free Delivery • Call For A Free Sample

KAUFMAN'S

216-222-1856

Installation Available

MAPLE HOLLOW FENCING



Specializing in High Tensile Fence Installation Fence for: Horses, Cattle, Sheep, Deer Control Rail Fence - Board Fence

Brian Barkley (814) 623-5756

RR #1, Box A-1 Buffalo Mills, PA 15534

GATES & FENCING SUPPLIES IN STOCK FOR DO-IT-YOURSELFERS

Large Supply of Posts In Stock For Do-It-Yourselfers

- Hi-Tensile
- Split Rail
- Chain Link
- Board
- Picket
- Vinyl Coated Horse Fence
- Woven Wire
- PVC
- Pool Enclosures

MILLCREEK

FENCE AND FARM SYSTEMS

2285 Old Phila. Pike Lanc., PA 17602 717-396-8987

C&F Co. CARNEY CATTLE & FENCE CO.

*Specializing in fence for cattle & horses

- High tensile fence
- Single and double top rail
- Board fence

*ROHN AGRI Products

Daniel Carney 1-800-498-0777

710 Back Road Gallitzin, PA 16641

For All Your Fencing Needs!

Post & Rail

High Tensile

Post & Board

Woven Wire

Diamond Mesh

Electric Tape



For Top Quality Installation at a Very Affordable Price

Cochran Fence

717/673-4982

RR1, Box 114 Roaring Branch, PA 17765

DeLaval

- 10 Auto Cord Takeoffs For Stanchion Barn
- 12 Auto Cords for Parlor
- 3" Low Line for Double 8 & Double 12 Parlor (Parallel)
- 2 3" SS Double/Top Entry Receivers
- 24 Super-flow units
- 24 Delatron Pulsators
- 12 SST take offs
- Double 9 herringbone, SST takeoffs, 3" low line, blue diamond breast rail, 2 years old
- Vacuum pump w/15 hp motor
- Double 6 3" low line w/washer
- Rationmaster computer feeder w/5 stations
- Double 4 Parlor w/take offs & weigh jars
- Double 4 parlor w/take offs & 2" low line
- 78 vacuum pump
- 8 Super flow claws
- 8 Delatron pulsators
- 6 85 lb. weigh jars
- 8 65 lb. weigh jars

Boumatic

- 8 2100 take offs
- 6 Little Champ take offs
- Double 4 2 1/2" low line w/washer
- Double 8 3" low line
- Double 6 3" low line
- DB2000 vacuum pump w/10 hp motor
- 4 star flow claws & shells
- Claws pulsators & washer

Westfalia

- 3" Low Line for double 6, 12 Bio claws, 12 Stimupulse pulsators, 2800 vacuum pump, ACR3 take offs w/S.S. cylinders, 2 years old
- Back flush system for double 4
- Double 8 w/DeLaval stalls & Westfalia 3" low line, 36' Westfalia crowd gate
- 2800 Vacuum Pump w/5 HP motor

Surge

- Double 6 Super Stall Herringbone Stalls
- Double 4 Easy Milking Herringbone Stalls
- Double 12 3" low line
- 3" double 4 low line
- 16 Eclipse Milkers w/pulsators
- 3" lowline, for double 6
- Electrobrain washer
- (8) weigh jars w/bracket
- (16) VSO take offs
- Double 4 parlor w/take offs & 2" low line
- Double 6 parlor w/take offs & 3" low line
- 100 plus vacuum pump

Germania

- 20 Model B Take-offs
- 8 Milking claws & shells

Miscellaneous

- 12 Choretime feeders w/Big Dutchman feed system
- Metal free stall dividers
- (2) 2" SS Pipeline for 30 stanchion barn, DeLaval, Boumatic

Buy & Sell used milk tanks - any size

Freddie S. Smith 540/639-2262