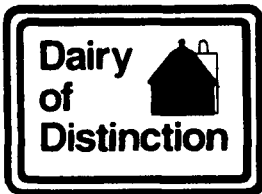


# Congratulation Dairy Of Distinction Award Winners

ROLLING ON...IN THE 90'S



MEETS THE CHALLENGE



## THE QUALITY CRAFTED LINE

BETTER SEEDBEDS... BETTER STANDS!

### SOIL BUILDERS



**SOIL BUILDERS.** Optional Coulter gang can be hydraulically controlled to save maintenance dollars. 5, 7, 9, 11 & 13 shanks. Available in 2 & 3 bar.

**NEW**

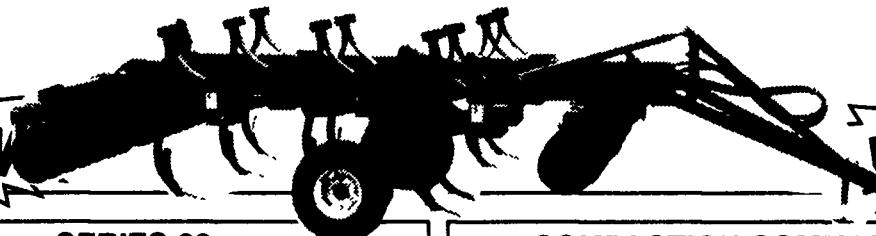
### SOIL COMMANDERS

**NEW**

The New Brillion Soil Commanders take Residue Management to the next generation of soil conservation efficiency.

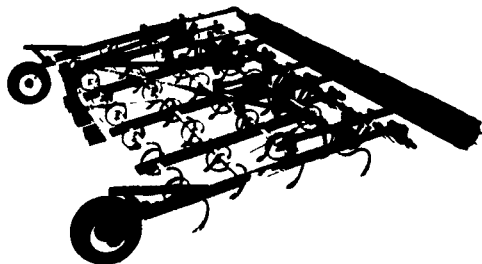
The Soil Commanders are versatile tillage tools designed to meet the needs of the mid-size farmer who uses a 150-200 H P tractor. One of the keys to the machine's versatility is that it uses interchangeable shank legs and individually mounted disk assemblies instead of a disk gang. This makes possible a machine with disk assemblies on the front and rear of the frame with chisel plow or deep-ripper shanks on 15", 24", 27" or 30" spacings

**NEW**



**NEW**

### 3 PT. BASKET HARROWS



Brillion has designed a 3 pt. S-Tine field cultivator with a larger, aggressively angled 12" diameter rolling basket, a 4-bar frame that allows for either 4" or 6" tooth spacing and an adjustable leveler bar in 12', 15' and 18' sizes. Gauge wheels are optional.

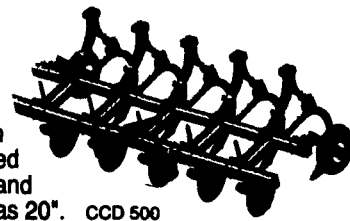
### SERIES 03 PULVI-MULCHERS ML & WL

**PULVI-MULCHERS** Build a firm, clod-free seedbed - one that lets all the seeds germinate at one time. 12'6", 13'10", 15'2" & 18'9" rigid; 21'8" 25' and 30' flat fold.



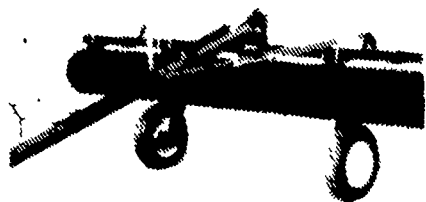
There's lots more reasons to buy Brillion... stop in and we'll talk.

### COMPACTION COMMANDERS NO-TILL RIPPER/DEEP RIPPER DESIGNED FOR YOUR CONSERVATION NEEDS 3-5-7 Shank



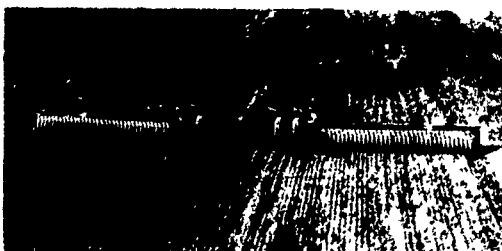
Brillion introduces their new Compaction Commander...designed to break up hardpan and compaction as deep as 20". CCD 500 The standard V-shaped alloy point and wear strip leaves residue on the surface with minimal soil disturbance. Auto-rest shanks with 20" of trip height allows for non-stop tillage. Parabolic shanks lift and fracture the soil. 39" of underframe clearance assures trouble free operation even in heavy residue.

### P-SERIES TRANSPORT PULVERIZERS 10 Ft. to 18 Ft.



**Rotary Frame Pulverizers; New PT10 Series Transport Concept.** Machine weight is hydraulically rotated over the wheels for transport. This reduces draw bar hitch weight considerably and provides ample clearance for transport. Also Available As Pull Type.

### X-FOLD PULVERIZERS



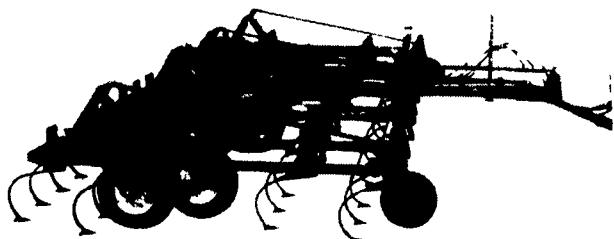
The X-Fold pulverizers are designed to meet the needs of today's larger acreage farmers...and Brillion offers them in two models and 11 sizes from 19' through 46'. Now available with 20" Ductile Wheels.

### 3 BAR CHISEL PLOWS



The CPP series mounted models enables you to turn short and fast... to transport easily, utilizing your tractor's hydraulic system, 7, 9, 11, 13 or 10,12,14,16 shank.

### HFC FIELD CULTIVATORS 16½' to 31½'



'C' Tooth -  
4 Year Warranty

S-Tine -  
3 Yr. Warranty

The "heart" of any field cultivator is the shank pivot point. A "bulked up" shank bracket made of cast ductile iron instead of the usual formed steel bracket, incorporated a hardened steel bushing AND a zerk grease fitting to lubricate the pivot point to reduce wear. The result is thousands of acres of extended life of the shanks.

### FLAIL SHREDDERS 12 Ft. And 15 Ft.



540 or 1,000 RPM

**FLAIL SHREDDERS** Heaviest gearbox on the market eliminates the number one cause of downtime. Available in 12' and 15'. Either cup or side slicer knives. 540 or 1000 RPM.

## OR MORE INFORMATION... CONTACT YOUR BRILLION DEALER

### PENNSYLVANIA

- ADAMSTOWN Adamstown Equip. Inc.
- ALLENTOWN Lehigh Ag Equipment
- BECHTELSVILLE Miller Equip. Co.
- CARLISLE Gutshall's, Inc.
- DOVER George N. Gross, Inc.

- EASTON Geo. V. Selple
- ELIZABETHTOWN Messick Farm Equipment Co.
- INTERCOURSE C.B. Hooper & Son
- GREENCASTLE Meyers Implement
- LANCASTER Landis Brothers, Inc.
- LEBANON Umberger's of Fontana

- LOYSVILLE Gutshall's, Inc.
- LYNNPORT Kermit K. Kistler, Inc.
- NEEDMORE Clugston Farm Equipment
- NEW HOLLAND A.B.C. Groff, Inc.
- OAKLAND MILLS Peoples Sales & Service
- OLEY Pikeville Equipment, Inc.

- QUARRYVILLE Grumell Farm Service
- TAMAQUA Charles Snyder, Inc.
- WATSONTOWN Deerfield Ag & Turf Center, Inc.
- WEST GROVE S.G. Lewis & Son, Inc.

### MARYLAND

- FREDERICK Ceresville Ford New Holland

### NEW JERSEY

- BRIDGETON Leslie Fogg
- ELMER Pole Tavern Equip. Sales Corp
- FAIRFIELD Caldwell Tractor & Equipment

ROLLING ON...IN THE 90'S



MEETS THE CHALLENGE