

Trader Don's Truck Parts

BUY-SELL-TRADE
Engines, transmissions, rears, steering boxes, and other parts.
215/639-6468 after 5 pm
215/803-5891 mobile
Philadelphia

77 U Model Mack Tractor,
300 engine, 5 spd. trans.,
28' alum. dump trailer **\$12,500**

74 DM Mack tri-axle dump,
237, 6 spd., 18 fronts,
44 rears, steel body, **\$13,000**

(215)343-9279

LEFEVER BROS. CHEVROLET CHEVY TRUCKS GEO

YOUR DIRECT LINE TO GENUINE GM PARTS

(800) 533-3837

When you call the number listed above, you'll reach our wholesale parts specialists, who can help you keep your GM repair work moving quickly.

Ask about:

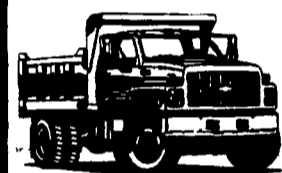
- Specializing in GM Medium Duty Trucks, Current and Obsolete.
- \$500,000 Parts Inventory.
- Parts Locator for Those Hard to Find Items.
- We Ship Anywhere, Local Delivery Available.
- Experienced, Knowledgeable Personnel.

Mon., Tues., Thurs., Fri.
7:30 a.m.-4:30 p.m.
Wed. 7:30 a.m.-8:30 p.m.
Major Credit Cards Accepted

(717) 432-9697

Quality Dealer Since 1921
406 U.S. Rt. 15, Dillsburg, PA 17019

GM Goodwrench Service



Kodiak Chevy Trucks
CAT DIESEL POWER

35 TRUCKS & TRAILERS

- Super High Pressure Washer ... \$2,500
- 1984 Mercedes 1317 "D" Truck w/20" reefer ... \$17,000
- 1986 Ford 350 Pickup w/cap & dual wheels (New 480 engine & transmission) w/Large Sweeper ... \$6,250
- 1991 20' Enclosed Van Trailer ... \$3,250
- 1993 20' Carmate Sandwich Trailer, fully equipped ... \$32,500

EVERYTHING IN MINT CONDITION
Call Ron Richards At:
(717) 485-3154 or (717) 485-4103

36 REAL ESTATE

RENT 51 stall pipeline dairy w/house. Feed and manure storage. (717)359-4383.

SNYDER COUNTY... 112+-A, exceptional 4BR home, 2-stone fireplaces, 1.75 bath, huge barn, sheep barn and other out-buildings. Quiet, tranquil Mt. Pleasant Mills area. INTEGRITY REAL ESTATE 717-837-1061.

Snyder County: 33 acre farm, road frontage on 2 sides, 9RM house w/2 enclosed porches, barn, out-buildings, nut and fruit trees. (717)539-2686.

SOUTHERN NORTHUMBERLAND CO. 128 acre farm 2 miles east of Reback, approx 100 tillable, some woodland & pasture, large stream, good roads. 717/425-2371.

DAIRY FARM... 267A, Lancaster Co. Call to negotiate. Ask for Eunice Lehman KINGSWAY REALTY 717-569-8701 or 717-284-2906.

South west Wisconsin, 180A, 45 stanchions, 2" pipeline system, 4 silos, open housing, 8 room home. 608-988-4213.

TIOGA COUNTY, PA: #641... Nice long views, road frontage, hard-top road, 102.05+ acres w/30+ acres new seeding included, \$80,000. #644... Secluded valley, open/wooded, 200+ acres, pond, old cabin, seasonal stream, \$159,900.

#646... Excellent building site for new home, 1.226+ acres, township maintenance, all approvals complete, good location, \$9500.

ENDLESS MOUNTAIN REAL ESTATE CO. 717-659-5684.

WANTED: Acreage north of Harrisburg. Must be secluded, tillable & wooded. 717/938-3517.

WANTED: Attention Farmers... Christian family looking for 1+ acres. Prefer wooded or partial wooded to build a house. Manheim, Lititz, Ephrata, Mt. Joy, Leola area. Lancaster Co Call 717-627-4148.

WANTED TO RENT: Small farm for dairy, produce, sustenance farm. Possibly buy. Consider anything, anywhere. (717)765-8696.

WANTED: Young couple wants to purchase 100+ac. farm. Preferably w/ farmhouse (TLC OK), barn, pastures, stream. Counties considered: Bradford, Tioga, Bedford, Berks and Dauphin. 610/346-7612 AM/PM.

WANT TO RENT: Farmhouse with outbuildings in southeast York County. (607)523-8434.

Whiteford (B21160MAT) single family ranch at townhome price! Possible in-law apt. 2 car garage only \$115,000. Call Phyllis Giese (410)879-1300 or (800)222-6177, ext. 3118 O'Connor Piper and Flynn Realtors

Farm house 16.31Acres, Lycoming Co. near Williamsport (717)435-0580 (717)435-2701.

FOR RENT: 80A turkey farm for sale/rent. Located Mifflin County. 2BR house. Will rent separate. Call 717-463-3701 ask for Gerald.

FOR RENT: House in Heidelberg Twp., Berks Co. 4BR, bath, LR, DR, kitchen. Would like couple interested in helping w/ milking- Rent will be adjusted. No dogs. Call between 6:30pm and 9pm. (610)693-5930

FOR RENT: Main St., Millheim, 7 room house, 1 1/2 baths, oil heat, no pets 814-349-8769.

FOR SALE OR LEASE, 261A dairy farm, approx. 235 tillable. Jefferson Co., PA. Call for details. 814-849-2039.

For sale: 139+ acre farm, lots of road frontage, good alfalfa ground. (610)932-9021.

Good 50 cow barn, house, 110A, \$69,000, \$5000 land contract. GOUVERNEUR, NY 304-655-8849.

HANOVER: Adams County farmettes 8.2 to 27.0 acres, secluded, perked and probed. Some deed restrictions to protect your property. All have considerable hard road frontage. Also available 132 acre farm with brick house, well and septic, some outbuildings. 717-867-3968

Hunters Special... Jefferson County, Brockway. Surrounded by state game, 55A, 3BR farmhouse, \$73,500. Call George. GLOBAL REALTY ENTERPRISES 814-237-5591.

Indiana Co., PA. farm, 127A farm, approx. 50 tillable, 3BR house, old barn for feeding heifers, 3 1/2 year old 400 head veal barn, 60x206. Free natural gas for heating house and veal barn. 2 farm ponds stocked w/fish, hunting cabin in secluded woods. \$215,000 Appraisal value \$235,000. Machinery available, crops and heifers. 814-743-6596; 814-624-0994.

JUNIATA COUNTY FARMETTE: Secluded 31 Level Acres, 1988 Immaculate, Spacious Bi-Level Home, Barn & Outbuildings. Call ERA Bashore Real Estate, Inc. at 717-436-2151.

MISSOURI OZARKS: 304+- acres, abundant wildlife, 4 ponds, few springs, drilled well, good fencing, 100x50 quonsant shelter, plus 14 stall dairy barn with lighted and covered holding pen. \$191,000. For more details call Brandy at RE/MAX FARM & HOMES, Houston, MO. 417-967-2221.

Modern 160 stall dairy farm for rent. Susquehanna Co., PA. House, barn 610-584-2088

Operating Bed & Breakfast: 6BR, 3BA, excellent features throughout. 25x60' craft garden store, 45 stanchion dairy barn, located on 100 acres on US11 in NY north country. A steal at \$185,000. (315)287-4221.

36 REAL ESTATE

FARM/HUNTING - EASTERN MARYLAND

289 acres with older, 3 BR home. Borders Cedar Creek, off Fishing Bay. Potential for hunting club/lodge! 60+ acres of pine timber, 12 acres cleared, remainder wooded. Surveyed and plat recorded. Great potential! \$210,000

Prudential Caroline Properties
(410) 479-3600

NEW LISTING

So. York Co. Small Purebred Swine Operation

'78 3BR frame home on 24 acres with spectacular view surrounded by rolling farmland, 5 miles off I83. 6-crate heated farrowing house with attached 2-level nursery. Cargil unit with auto feed auger. Also room for cattle or horses. Priced for quick sale, \$169,000.

717/235-6966

FARMS AND LAND FOR SALE IN YORK COUNTY

92 Acres w/65 tillable, balance wooded & pasture w/small stream, 3 BR house, barn & silo, \$299,500

22 Acres w/17 tillable, 4 BR house w/extra rooms in the basement, 30x50 shed, in-ground pool, located in a parklike setting, \$289,500

Lots 1 acre to 46 acres, some w/creek frontage, \$29,500 to \$109,900

BENNETT WILLIAMS

REALTY INC.

BH&G 717-843-5551

And Ask For Lee Kennedy 717-862-3869 or Jen Posey 717-862-3866

Dairy Farm For **LEASE** With or Without Crop Acreage. Milking Facilities 100 To 300 Head Capacity. Available Nov. 1 Owner Has Enough Pasture & Tillable Land To Feed Milkers Plus Dry & Young Stock, Or Owner Willing To Sell Hay And Silage To Leasee. House Included With Lease. Located Central Virginia Send Inquiries To:

(G-178) Lancaster Farming
PO Box 609
Ephrata, PA 17522.

ATTENTION ALL ANTIQUE LOVERS!

Capture the spirit of 1800's inside this 2 story farmhouse. Restored to original beauty. 3 bedrooms, 2 baths, approximately 2,000 sq. ft. Several outbuildings. Zoned Agricultural. Lebanon County location. #5190 - \$105,900

Krall Real Estate

1402 Quentin Road
Lebanon, Pennsylvania 17042
Business (717) 273-1631
Fax (717) 273-3085
1-800-537-1575



PRIVATE - SECLUDED
237 ACRES
BEDFORD CO., PA.

Brick Colonial, 22 Years old with very large rms. 100 acres tillable rent in woods - 2 ponds - stream - large bank barn. You can not see a house from this location!!

Call **JOHN WILDESON**
GLEN FALLS REALTY
410-876-2810

FARM FOR SALE

BY OWNER

DAUPHIN CO., PA

90 ACRES AMISH OPERATED

40 Cow Stall, 2 Silos & Manure Pit
Northeast of Millersburg

Contact: **ELAM S. ZOOK**

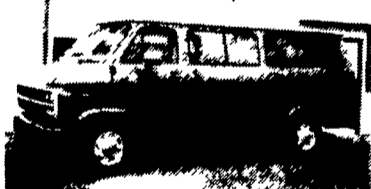
8 Green Tree Road
Quarryville, PA 17566
717-786-4036 7AM-5PM



86 CHEVROLET BEAUVILLE
V8, AT, AC, TL, Cruise, PW, PDL, PS, PB, Cass, 8 Pass, Privacy Glass, Running Boards, Maroon/Creme
\$3,995



94 GMC 3500 SIERRA SL
CAB & CHASSIS
5.7L V8, AT/OD, PS, PB, 11,000 GVWR, 60" CA, Red, 43,000 Miles
\$14,900



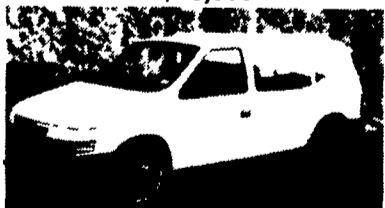
93 CHEVROLET BEAUVILLE
V8, A/OD, AC, PW, PDL, Cass, PS, PB, Red
\$11,900



88 FORD CLUB WAGON XLT
Maxi-Van, 12 Pass, 5.8L V8, AT, Dual AC & Heat, PW, PDL, Tilt, Cruise, PS, PB, Running Boards, Loaded, Tutone Blue, 62,000 Mi.
\$10,800



88 CHEVROLET C-30 BOX TK
14 Ft. Box, Dock Height Liftgate, V8, AT, AC, PS, PB, Gray
\$9,800



91 DODGE CARAVAN SE
V6, AT, AC, PS, PB, 7 Pass, White
\$6,900

FINANCING AVAILABLE

93 GMC 1500 Sierra SL PU...\$12,500
90 Chevy Lumina APV Cargo Van...\$4,800
89 Dodge Ram 250 Cargo Van...\$4,800
88 Jeep Cherokee Laredo...\$4,850

84 Chevy Beauville Van, Left Side Damage...\$1,200
78 Winnabego 25 Ft. Class A Motorhome...\$6,800

PINE TREE MOTORS

Rt. 322 & Clearview Road, Clay
Lancaster Co., PA
717-738-2242