

**ALL STEEL  
REPLACEMENT TRUCK  
BED**



7'x71"W or 85"W  
8 1/2' Lx80"W or 90"W  
10'Lx8"W, 12'Lx8"W

Also Available In 4'x7' and 4'x8'

5'x8' Starting at \$650  
5'x10' Starting at \$695



UTILITY (TILT OR GATE MODEL) SIZES:  
5'x8', 5'x10' 2000# GVW - 5'x10', 6'4"x10',  
6'4"x12', 3000# GVW



UTILITY WITH GATE-SIZES:  
16'x76", 18'x76", 7,000# GVW,  
20'x81" 12,000# GVW

Also Available In Car Haulers 16', 18' 7,000# GVW



FLAT BED: Sizes: 16'x76", 18'x81"  
7000# GVW, self storing 80" long ramps

STARTING  
AT  
\$795.00



Car Dollie

\$50 off on  
\$795 model  
w/AD

**HIGHWAY HYDRAULIC DUMP**



5'x8', 3000# \$2,050  
6'x10', 7,000# \$3,095  
6'x10', 10,000# \$3,495  
7'x12', 10,000# \$3,995

**LOW PROFILE DUMP TRAILERS**



6'x10' GVW low profile dump trailers w/  
landscape gate

7,000# \$3,495  
10,000# \$3,795

Starting At  
\$3795 w/4'  
Adj. Tail



GOOSENECK SIZES: 20'x8' 12,000# or  
14,000# GVW, 24'x8' 14,000# GVW

DROP AXLE CONSTRUCTION  
14' 7000# OR 12,000# GVW



DECK-OVER CONSTRUCTION  
18'x8' w/Tail 10,000# GVW \$3,295

Over 300 Trailers  
In Stock  
Starting At \$475.00  
T-Plates  
DEALERS WANTED



**KUTZ FARM EQUIPMENT, INC.**

Pine Grove, PA (717) 345-4882 FAX 717-315-2884

8 AM-5 PM MONDAY TO FRIDAY  
8 AM-12 SATURDAY OR BY APPOINTMENT

**35 TRUCKS & TRAILERS**

12' dump box, \$500 OBO.  
Snyder Co. 717-374-4792.

1958 IH R-160 truck,  
24,000 GVW, 54,000  
miles, w/newer 10-ton twin  
cyl. hoist, \$1800.  
215/855-8190.

1967 Mack R model,  
33,000 GVW, w/1982 9 ton  
Eager-Beaver trailer, both  
excellent shape, MUST  
SELL! \$11,900.  
(610)584-2772.

1972 Chevy C60, 4 speed,  
350, 24,000 GVW, 22'  
flatbed, 76,000 miles, good  
condition, \$2500.  
717-264-7413 8-5.



**1978 IHC**

Cab & Chassis - Cat Diesel 18  
Front, 44 Rears, Double Frame

Curry Supply Co., Curryville, PA  
1-800-345-2829

**Warehouse Direct To Your Door!**

Free UPS  
Over \$35

<p><b>Trailer Hitches</b></p>	<p><b>Brake Controls</b> \$59.95</p>	<p><b>Fold-down Gooseneck</b> \$89.95</p>	<p><b>Convert - a - Ball</b> \$31.95</p>
<p><b>Ball Mounts</b> \$12.95</p>	<p><b>"PLUG-IN" Simple Wiring Hook</b></p>	<p><b>Pintle Hooks</b> 5-50 Tons</p>	<p><b>Elec. Plugs &amp; Adapters</b></p>

**WEAVER DISTRIBUTING** 1-800-WEAVER-D  
RR2 Fredericksburg, PA 17026

Free Catalog  
1-800-932-8373

**KEIM**  
YOUR CHEVY GEO FAMILY

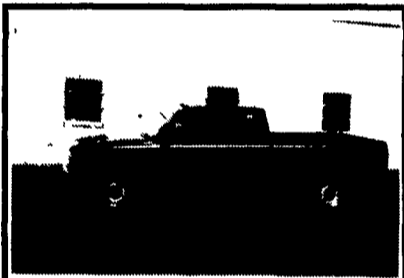
(717) 768-8225  
(800) 223-KEIM

RT. 30 Lincoln Highway East  
Paradise, PA 17562

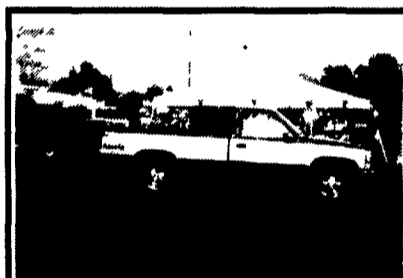
YOUR TRUCK, VAN & 4x4  
HEADQUARTERS  
**1-800-223-KEIM**



**1993 & 1994 CHEV K-1500  
& K-2500 X-Cab Short Beds,**  
5 To Choose From, All Serviced  
& Warranted



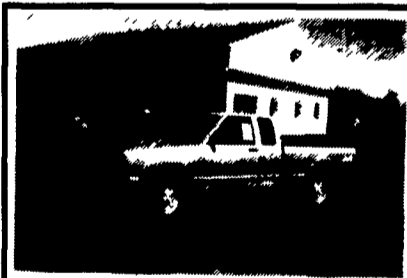
**1995 CHEV EXT CAB  
K-2500 4x4**  
6.5 Turbo Diesel, 1 Owner,  
15,000 Miles, Auto, Air,  
Factory Warranty



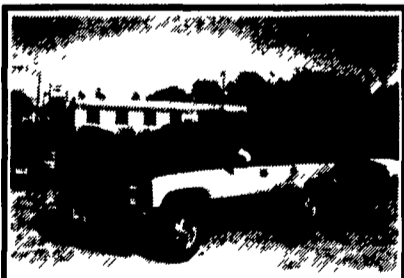
**1995 CHEVY K-1500 4x4**  
V8, Auto, Air, Tilt, CC, EW, EL,  
Sold New By Us, Only  
6,000 Miles



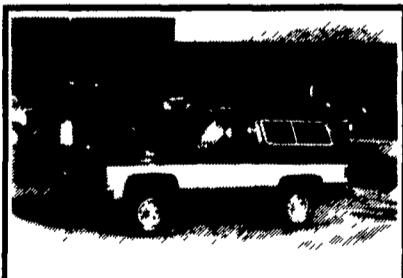
**1988 CHEV K-1500 4x4**  
V-8, Auto, Air, Tilt, CC, Low  
Miles, Excellent Condition,  
Local Trade



**1991 GMC SANOMA  
X-CAB 4x4**  
V6, Auto, Air, Tilt, Cruise,  
Local Trade



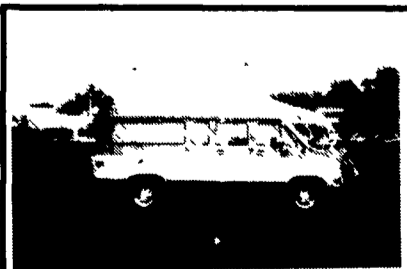
**1992 & 1994 SUBURBANS**  
Cloth or Leather, Both Have  
Dual Air, and Are Fully  
Equipped



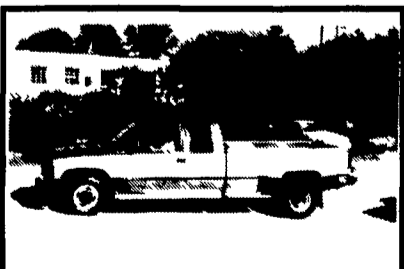
**1990 GMC JIMMY**  
V8, Auto, Air, Tilt, CC, EW,  
EL, Low Miles, Excellent  
Condition



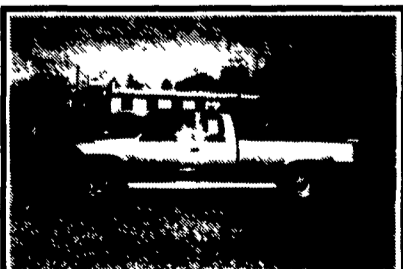
**1989 FORD BRONCO XLT**  
V-8, Auto, Air, Tilt, CC, EW, EL,  
Local 1 Owner  
**\$7,995**



**1993 GMC RALLY VAN**  
8 Pass, Dual A/C, Fully  
Equipped, Only 33,000 Miles,  
V8



**1988 CHEV C-3500**  
1 Ton, Ext. Cab Dually, 454 V8,  
Auto, Air, Tilt, CC, EW, EL, -  
Only 67,000 Miles



**1988 & 94 LONG BED EXT  
CAB 4x4's**  
V8, Auto, Air, Tilt, CC, Low  
Miles, Excellent Condition



**1989 CHEV C3500 1 TON**  
Silverado, Air, Tilt, CC, EW,  
EL, Only 68,000 Miles,  
454 V8