

**1977 IH Loadstar 1750**  
DT 466 5/2 Spd, 16' Flatbed  
Very Good Condition No Rust  
**\$6,300**  
**717-768-3061**



**1978 Int. 10 Wheeler Dump**  
62,000 GVW 14' box, 290 Cummins motor,  
rebuilt trans, new tires and batteries  
**\$12,500/obo**  
**(610) 693-6246**

'73 Int 4200 tractor, 318  
Det., 13 spd ready to  
work, \$3200  
610/932 5576

74' Mack tandem w/Atlas  
roll-off hoist 237, 5 spd,  
fresh paint, good condition  
\$12,500 610/932 5576

**ENGINES FOR SALE**  
Mack 86 300 285 237  
Cat 3208 & Int DT 466  
DETROIT ENGINE 6V53  
rebuilt, never run, 318, low  
miles Silver 8V92, V671 &  
671, Cat 3208, Int DT466  
Mack E6300, 237, 285  
673  
Gas Engine Dodge 361  
Ford 391, 361, Chevy 366  
427, 350  
Many other parts at  
reasonable prices  
**HAP'S TRUCKS & PARTS**  
1-800-839-3338  
Fax 610 944 0758

**BREWER EQUIPMENT**

Rd#2, Box 55  
Orangeville, PA 17859

1990 Ford 20 Ft. Box with  
Side Door; 429 Engine 6  
Speed 63,000 Miles

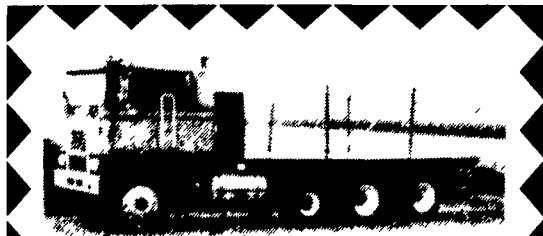
**\$9,500**



1988 F-700 Ford, 429 Engine  
5 Speed 34,000 Miles

**\$6,500**

**717-683-5411**



**1974 Marmon**  
Big Cam 400 Cummins, RTO 12513 Trans,  
PTO Pete Air Trac Susp  
Cab & Chassis only  
**\$5,900 OBO**  
**717-445-6451**



1982 Peterbilt Model 359, 400 Cummins,  
Jake Brake, 13 Speed, Air Ride (Needs  
Engine Overhaul) \$7,500  
**Phone 717-235-2924**  
**8:00 A.M. Til 5:00 P.M.**

**McNAMARA SUBARU** Limerick, PA  
1 (800) 753-3123  
**USED TRUCKS & CARS**

- 1996 Ford F-350 XL, 4X4, Auto, Air, 460 V8 ... Save Thousands
- 1995 Ford F-350 Crew Cab, XLT, dually, Power Stroke DIESEL, Centurian Pkg, 5 Spd. .... **Georgous Truck \$12,900**
- 1995 Ford F250 Super Cab, power stroke DIESEL, XLT, 4x4, auto, 19,000 miles, 4 10's ... **Immediate Delivery**
- 1995 Ford F250, power stroke diesel, XLT, 4x4, 5 spd, 10K.....**\$25,900**
- 1995 Chevy Suburban LS, 4x4, 3rd seat, dual air, 20K, beautiful
- 1992 Chevy 1500 step side, 4x4, auto, Silverado, Burgundy, 1 owner. **\$14,900**
- \* 1990 Dodge 250 Cummins, diesel, 4x4, 5 spd., 1 owner, serviced regularly, showroom condition ..... **\$12,900**
- 1992 Ford F350 Crew cab, 4x4, XLT, 460 V8, 42K, 1 owner, 2 yrs left on extended warranty ..... **\$21,900**
- 1995 Chevy 2500 Extended Cab, 4x4, 454 Engine, Auto, Silverado Package, Only 10,000 Mi. .... **\$24,900**
- 1994 Ford F350 4x4 XLT Turbo Diesel, 1 Ton, 40,000 Mi., Auto, PW, PL ..... **\$23,900**
- 1995 Toyota Tocomo P/U, 5 Spd, 4x4, A/C, 15K.....**\$17,900**
- Ranger Super Cabs; XLT, 4x4, auto, 6 cylinder, 3 to choose from.
- 1988 Dodge D100 4x4, auto, 318 V-8, 75,000 miles ..... **\$7,995**
- 1987 Dodge D100, V-8 318, auto, 4x4, 57,000 miles, Service Records
- 1991 Ford F-250 XL, 4x4, Auto, Air, 302 V8, 60K Miles ..... **\$12,900**
- 1988 Ford F-250, XLT, 4x4, 60K Miles, Auto..... **\$8,995**
- 1990 Honda Civic HB, 5 Sp., A/C, Cass ..... **\$5,995**
- 1988 Honda Accord Sedan, LX model, 4 cyl auto, A/C, low miles, 1 owner ..... **\$7,995**
- 1989 Honda Civic Sdn LX, 5 spd, air power features, well-maintained. .... **\$6,995**
- 1995 Ford Taurus Sdn., 25K Auto, A/C..... **\$12,900**
- 1992 Chev Corsica Sdn, Auto, A/C, 50K ..... **\$6,900**
- 1995 Subaru Legacy S/W, AWD, ABS, dual air bags, 24K..... **\$17,900**
- 1995 Subaru Impreza coupe, AWD, auto, dual air bags, A/C, balance of factory warranty..... **\$14,900**
- 1992 Subaru Legacy S/W, L+, AWD, 1 owner, complete Service records.... **\$9,900**
- 1992 Legacy Sedan, AWD, auto, power equipment, 48,000 miles..... **\$11,900**
- 1993 Nissan Altima GXE, Auto, A/C, PW, PL, Cass, Tilt, Air Bag, Cruise..... **\$11,995**
- 1993 Chevrolet Cavalier Z24, Auto, A/C, PW, PL, ABS, Cass, Cruise, Sunroof ..... **\$11,900**
- 1994 Cadillac Seville STS, Northstar engine, 1 owner, 29K, polo green..... **\$26,900**

**REWARD: Cash paid for any diesel 4x4 Before you trade, see us with your 4x4 diesel**

PRE-OWNED TRUCKS	PRE-OWNED CARS	PRE-OWNED MPV'S
'94 F250 HD 4X4 XLT 351 V8 A/C A/OD	'93 CAVALIER, A/C A/OD Cruise & Tilt CD Sunroof	'95 JEEP CHEROKEE SPORT 2 dr, A/C, 6 cyl, 5 Spd
'95 RANGER XLT, A/C 2.3 L 5 Spd 1-Owner	'94 GRAND MARQUIS, GS, Sdn A/C A/OD 30,000 Miles	'94 GRAND CHEROKEE LAREDO Pkg., 4.0L A/OD A/C 1 Owner
'94 F150 4X4 SUPER CAB XLT V8 A/OD Capl. Chairs & More	'94 ESCORT 3 DR. LX A/C, 5 Spd AM/FM Cassette	'93 EXPLORER 4 DR., XLT, 4.0L A/OD A/C 48,000 Miles
'94 F150 XL SPECIAL 4x4 4.9L 5 Spd Work Ready	'94 GRAND AM, 2DR. A/C A/OD Cruise/Tilt Windows Locks	'93 WRANGLER SAHARA, 4.0L, 5 Spd, 2-Tops & More
'94 CHEVY K-2500 4X4 SUPER CAB Diesel A/C A/OD & More	'93 EAGLE TALON TSI A/OD A/C Sunroof & More	'93 FORD CONVERSION VAN, 5.0L V-8 Dual A/C, Leather
'92 F150 4X4 XLT, A/C A/OD 2 Line Red 34,000 Miles	'93 CROWN VICTORIA LX SDN, V8 A/C Cruise Power Equip	'94 S-10 BLAZER TAHOE, 4 dr A/C A/OD, 20,000 Miles
91 TOYOTA D/X	89 LINCOLN TOWN CAR, Signature A/C Fully Equipped	'93 GRAND CHEROKEE LAREDO, A/C AT 38,000 Miles
93 RANGER XLT SUPER CAB F. O. T. T. Cassette More	93 GRAND AM SE A/C A/OD 30,000 Miles	'91 EXPLORERE SPORT A/C 5 Spd 60,000 Miles
89 F150 4X4, XLT 5.0L A/C 5 Spd	'92 GEO METRO, 5 Spd Convertible Summer Fun	'92 EXPLORER SPORT, 4.0L A/C A/OD, 35,000 Miles

**ENGLE-RISSINGER AUTO GROUP**

MIDWAY BETWEEN HALIFAX AND MILLERSBURG • 717-896-3421 • 1-800-242-8075  
HOURS: MONDAY-FRIDAY 8:30 AM - 8:30 PM; SATURDAY 8:30 AM - 3:00 PM

78 Int flatbed dump w/  
grain sides DT466 5&2  
\$6000 610/932 5576

87 Pete 349 H convention  
tractor, 400 Cummins, 13  
speed Jake air ride  
Budds 191 w/B non  
sleeper new steering, tir  
ese good truck, a/c  
\$15 000 (610)777-1747

88 Chevy 2500 3/4 ton,  
350 HD 4 spd, PS, PB, air,  
AM FM cassette, 7,200  
GVW 40 000 original one  
owner miles, new radials  
dark blue, excellent condi-  
tion \$8 600 717 733 2873

89 Ford XLT Lariat, F150,  
super cab, 302 EFI, 5 spd,  
PS PB, air, AM FM, dual  
tanks, 64 000 one owner  
miles, new radials, blue,  
excellent condition  
\$9 900 717-733 2873

90 Dodge 150, 1/2 ton,  
318 EFI, auto, PS, PB, AM  
FM 41 000 one owner  
miles new radials excel-  
lent condition \$7,900  
717 733 2873

90 Dodge LE 250, 4x4,  
318 EFI HD 4 spd PS  
PB PW PDL cruise, tilt  
air, AM FM, 7,500 GVW  
48 000 miles, excellent  
condition \$11 500  
717 733 2873

90 Ford XLT E150 7 pas-  
senger 302 EFI auto, PS,  
PB PW PDL cruise tilt  
dual air AM FM cassette  
privacy glass blue, 52 000  
miles, excellent condition,  
\$10 900 717 733-2873

**EBY USED EQUIPMENT**

- BODIES**
- (2) 10' Eby Cattle Bodies
  - (1) 14' Eby Cattle Body
  - (1) 16' Wooden Cattle Body
  - (1) 17' Eby Cattle Body
  - (1) 20' Eby Cattle Body
  - (1) 22' Eby Cattle Body

- GOOSENECK**
- 1992 Eby 20'x7'6" x6'6"
  - 1990 Four Star 20'x7'x6'6"
  - 1989 Eby 20'x8'x7' Ruff Neck
  - 1989 Four Star 20'x8'x8'
  - 1989 Cherokee 26'x8'x8' 5 Horse
  - 1981 Eby 22'x8'x6'9" Ruff Neck

**M.H. Eby, Inc.**  
1194 Main Street (Route 23)  
Blue Ball PA 17506  
(717) 354 4971 (800) 292 4752  
FAX (717) 555 2114  
1435 State Route 23  
West Jefferson OH 43162  
(614) 879 6901 (800) 772 0507  
FAX (614) 879 6904

**IN ALUMINUM BODIES EBY BUILDS IT**

M H Eby custom-builds aluminum truck bodies for the agri-transportation market Nobody offers more sizes and options in

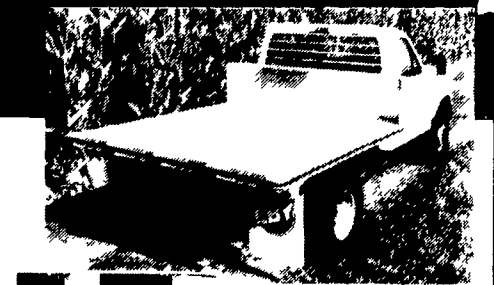
- **FLATBED BODIES** - Lengths to 32', choice of 5 widths
- **GRAIN BODIES** - Lengths to 24', landscape and general purpose dumps to 12'
- **LANDSCAPE BODIES** - Lengths to 12', We'll build to your specs!

For greater payload capacity Eby's aluminum design is equal in strength to steel and up to 40% lighter Our corrosion-resistant components never need painting That means minimum maintenance improved appearance and higher resale value

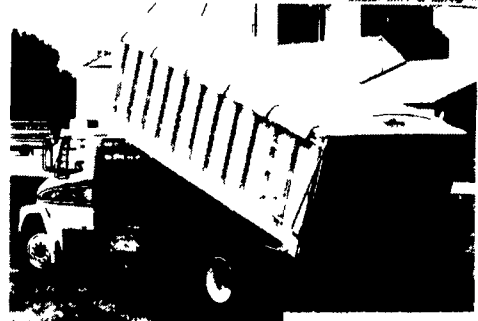
Eby products have superior standard features And we offer customer options for virtually any application Agriculture is your business - **building bodies to haul it is ours.**



1194 Main Street  
Blue Ball, PA 17506



Let EBY custom build one for you.



**800-292-4752**