



JULY 15-21, 1996

NEW MOON, JULY 15.

ST. SWITHIN'S DAY

July 15 is St. Swithin's Day, renowned for its weather lore despite a lack of scientific evidence to back up the predictions. St. Swithin was a ninth-century bishop of Winchester. He appreciated God's wet weather and so he specified an outdoor burial for himself, rather than submit to being entombed within the church with his esteemed colleagues. His request was initially honored, but some years later, on July 15, an attempt was made to bring him back into the fold. Legend has it that a great tempest brought rains that lasted 40 days, and the transfer was put off



Let well enough alone.

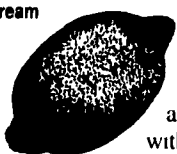
TIP OF THE WEEK

Hang clothes on a clothesline into the prevailing wind, so pant legs, sleeves, etc., will billow and smooth in the breeze.

COMMON LIME PIE

- 1-1/2 teaspoons unflavored gelatin
- 2 tablespoons cold water
- 1 14-ounce can sweetened condensed-milk
- 2/3 cup plain yogurt
- 1/2 cup fresh lime juice
- 2 teaspoons grated lime zest
- 1 graham cracker crust
- lime slices for garnish

- Meringue:
- 2/3 cup sugar
 - 1/2 cup water
 - 2 large egg whites
 - 1/4 teaspoon cream of tartar
 - 1/2 teaspoon vanilla extract



Str gelatin into cold water, heat gently until dissolved. Whisk gelatin with next 4 ingredients. Chill 20 minutes, stirring occasionally until thickened. Fill pie crust and refrigerate. Prepare the meringue. Combine sugar and water; heat for 5 minutes to form a syrup. Beat egg whites and cream of tartar to soft peaks stage, add hot syrup and vanilla and beat until stiff. Spread cooled meringue over pie and brown under broiler for about 2 minutes. Garnish with lime slices.

Makes 8 servings.

THE OLD FARMER'S WEATHER PROVERBS



St. Swithin's day, if thou dost rain, for forty days it will remain.

St. Swithin's day, if thou be fair, for forty days 'twill rain na mair.

Cows stretch their necks and horses stretch in their stables when rain is coming.

No tempest, good July, lest corn look rueful.

Leesport Livestock

LEESPORT, PA
JULY 10, 1996

CATTLE 216... PDA .. Supply included 135 st. steers & heifers and 60 feeder cattle ...Compared with last week's sale...steers .50 to 1.50 higher, cows steady to 1.00 lower.
STEERS: few Choice 1050/1400 lbs. 62.50-66.50, Select 53.25-62.00.
HOLSTEINS: High Choice and Prime 58.00-60.00, couple 61.25, Choice 1200/1500 lbs. 53.00-58.00, few Select 49.25-51.75, Standard 37.50-44.50.
HEIFERS: few Choice 930/1280 lbs. 55.00-65.50, few Select 45.00-52.00.
COWS: Breaking Utility and Commercial 37.00-40.00, couple 41.50, Cutter and Boning Utility 33.50-38.00, Canner and Low Cutter 26.00-32.50. Shells down to 15.00.

BULLOCKS: couple Choice 56.50 & 57.50, couple Select 47.75 & 50.00.
BULLS: Yield Grade No. 1 1150/1600 lbs. 39.00-46.00, few No. 2 1090/1225 lbs. 35.50-36.75.
FEEDER CATTLE: STEERS: few Medium Frame No. 1 350/600 lbs. 45.00-55.00, few Large Frame No. 2 300/500 lbs. 35.00-43.50; HEIFERS: Medium Frame No. 1 250/625 lbs. 36.00-53.00; BULLS: few Large Frame No. 2 485/650 lbs. 31.00-36.00.
CALVES 239...Holstein bulls 5.00 to 10.00 lower.
VEALERS: couple Choice 65.00 & 70.00, few Good 55.00 & 62.50, Standard and Good 75/105 lbs. 17.00-20.00, Utility 55/85 lbs. 10.00-17.00.
FARM CALVES: No. 1 Holstein bulls 90/135 lbs. 45.00-65.00, No. 2 85/110 lbs. 20.00-45.00; No. 1 Holstein heifers 90/115 lbs. 50.00-95.00, No. 2 70/85 lbs.

10.00-25.00. Beef cross bulls and heifers 80/150 lbs. 35.00-75.00.
HOGS 112...Barrows and gilts 1.00 higher, sows 3.00 higher.
BARROWS AND GILTS: few lots US 1-2 230/260 lbs. 56.00-58.00, few lots US 1-3 240/275 lbs. 53.00-55.50, few lots 210/215 lbs. 52.25-53.50.
SOWS: US 1-3 275/645 lbs. 44.50-52.50.
BOARS: 33.50-37.00.
FEEDER PIGS 112...US 1-3 26/66 lbs. 55.00-95.00. --- per cwt.
SLAUGHTER LAMBS: Choice 35/125 lbs. 80.00-112.00.
SLAUGHTER SHEEP: 22.00-42.00, few Yearlings 62.00-70.00.
GOATS 17...Large 70.00-85.00, Medium 35.00-50.00, few Small Kids 20.00-30.00. --- per head.

Middleburg Livestock

MIDDLEBURG, PA
JULY 9, 1996

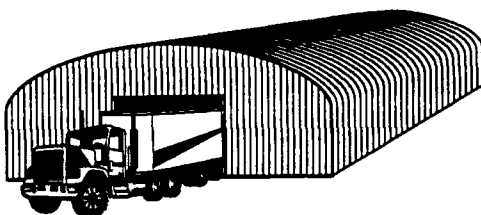
CATTLE 368... PDA ..steers strong to 1.50 higher, cows mostly steady to 1.00 higher.
STEERS: few High Choice and Prime 1165/1370 lbs. 66.00-66.50, Choice 1050/1450 lbs. 60.25-65.00, Select 57.00-60.00, few Standard 44.75-50.00.
HOLSTEINS: few High Choice and Prime 1300/1600 lbs. 58.50-60.50, Choice 1200/1575 lbs. 53.75-58.00, Select 48.00-53.00, few Standard 39.75-47.00.
HEIFERS: couple Prime 65.75 & 66.50, Choice 950/1325 lbs. 58.00-65.25, few Select 50.00-56.25, one Choice Holstein 57.57.
COWS: Breaking Utility and Commercial 36.00-40.00, couple 41.50, Cutter and Boning Utility 33.00-38.50, couple 39.75.

Canner and Low Cutter 26.00-32.50, few down to 23.00. Shells down to 20.50.
BULLOCKS: one Choice 1350 lbs. 51.50.
BULLS: Yield Grade No. 1 915/1890 lbs. 39.75-46.00, few 47.75 & 48.00, few No. 2 815/1760 lbs. 33.00-39.00.
FEEDER CATTLE: STEERS: few Large Frame No. 2 470/575 lbs. Holsteins 29.50-33.50; HEIFERS: Large Frame No. 2 425/825 lbs. Holsteins 35.00-47.00, couple 79.00.
CALVES 276...Holstein bulls No. 1 15.00 lower.
VEALERS: Standard and Good 75/105 lbs. 21.00-24.00, Utility 55/85 lbs. 12.00-20.00.
FARM CALVES: No. 1 Holstein bulls 90/125 lbs. 35.00-65.00, No. 2 85/110 lbs. 24.00-40.00; No. 1 Holstein heifers 80/115 lbs. 65.00-110.00, No. 2 70/90 lbs. 30.00-55.00. Beef cross bulls and heifers 70/100 lbs. 21.00-52.00.
HOGS 363...(07/08 & 09/96)..Bulk of supply sold on Monday and reported by the auction. Barrows and gilts 2.00 to 4.00 higher, sows 4.00 higher.
BARROWS AND GILTS: US 1-2 230/260 lbs. 58.35-59.10, two lots 59.75, US 1-3 235/270 lbs. 56.00-58.35.
SOWS: US 1-3 285/625 lbs. 44.25-54.50.
BOARS: all weights 33.75-37.75.
FEEDER PIGS 151...US 1-3 12/25 lbs. 16.00-22.00, 30/45 lbs. 24.00-31.50, 50/65 lbs. 32.00-42.00. --- per head.
SHEEP 25...SLAUGHTER LAMBS: Choice 35/110 lbs. 77.00-93.00.
SLAUGHTER SHEEP: few 21.00-28.00.
GOATS 24...Large 43.00-113.00, few Medium Kids 26.00-42.00, few Small Kids 15.00-25.00. --- per head.

FACTORY DIRECT SALE

Up To 40% Off!

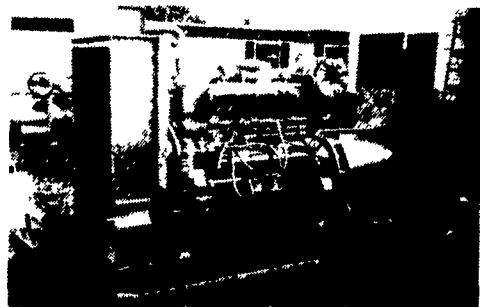
FACTORY CLOSEOUTS! STEEL BUILDINGS



SUPER HEAVY STEEL
25x30 (2 left) 40x50 (1 left) 50x100 (1 left)
30x40 (3 left) 42x64 (2 left)

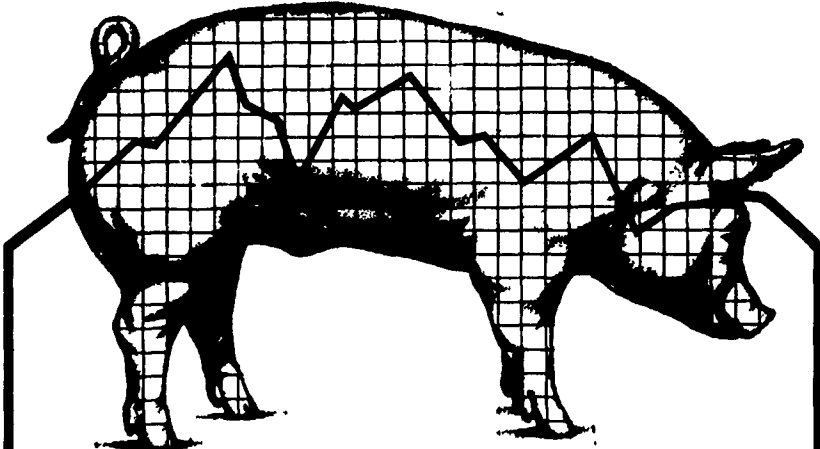
20 YEAR WARRANTY
American Steel Arch, Inc.
1-800-942-1234
Made In America

MARTIN MACHINERY



GENERATORS

Sales ★ Service ★ Rentals
★ Complete Generator Systems
★ PTO ★ Portables ★ 2-1600 KW
"We Service It If You Have It And Sell It If You Need It"
34 W. Mohler Church Rd.
Ephrata, PA 17522
Tel: 717-738-0300
Fax: 717-738-4329



HOW HAS YOUR CASH FLOW BEEN?

Purina Mills, Inc. CFA PROGRAM

Offers Stability To Your Marketing

OCT. 94 - SEPT. 95 PRICES:
PACKER BASE \$39.91/cwt
PURINA CFA \$46.49/cwt



Call now to get the details on how you can even your cash flow with Purina Mills, Inc. CFA Program

PURINA MILLS, Inc.
800-873-5300

Manufacturing Facilities: Lancaster, Harrisburg, Hagerstown (2/97), Wyalusing and Klotzville

BINKLEY & HURST BROS. INC.

133 Rothsville Station Rd • Litz, PA 17543
717-626-4705

WE SHIP PARTS DAILY

- FEDERAL EXPRESS • TRUCK FREIGHT
- AIR FREIGHT • B&H DELIVERY SERVICE

CASE IH **Egger Beaver** **DeGelman** **Scott**

CASE IH **Red Weeder** **AUTOMATIC METERING WEED WIPER CONTACT HERBICIDE APPLICATOR** **Busy As A Bee?**

Wipe the weeds out of your yard - garden - crops \$22.95

MONOSEN **KINZE** **KELDERMAN** **WOODS** **ATHENS**

CORN PLANTERS & GRAIN CARTS **AIR RIDE** **MOWERS & BLADES** **Disk Harrows Coulters Chisels Chisel Plows**

No Matter Where You Are - You're Never Too Far!

Your Parts Are Just A Phone Call Away!

This Is Our Fax No. 717-626-0996
If You Have A Fax No., Let Us Know, We Can Communicate With You By Fax