

**Delmarva Broiler**

ATLANTA, GA  
JULY 10, 1996

**DELMARVA BROILER/FRYER MARKET. FEDERAL-STATE**

Movement of ready-to-cook whole birds was light to fair at best. Seller offerings were closely cleared to fully adequate and were in the tighter position on the smaller sizes. Live supplies were moderate; weights were mixed in a full range, and were mostly desirable to heavy. Processing schedules were moderate to heavy. Less

than trucklot asking prices were generally unchanged at 61 to 75 cents. Trade sentiment was mostly steady. In the parts complex, wings remained in best demand and supplies were clearing well. Breast items and particularly leg quarters were at least adequate for the generally light and unaggressive buying interest

ESTIMATED SLAUGHTER OF BROILER/FRYERS IN DELMARVA (000)

ESTIMATED ACTUAL AVG. WEIGHT ACTUAL AVG. WEIGHT 07/10 07/08 07/08 07/03 07/01

2,327 2,442 4.89 2,467 4.88  
\*BROILER/FRYER CURRENT NEGOTIATED PRICES FOR IMMEDIATE DELIVERY INCLUDES MOSTLY MULTIPLE-DROP SHIPMENTS OF BRANDED AND WING TAGGED TO NEW YORK CITY FROM DELMARVA BRANDED U.S. GRADE A RANGE 59-75 WEIGHTED AVERAGE 63.05 NO. OF BOXES 8,110  
\*8 of 9 plants reporting.  
SOURCE: USDA/AMS POULTRY DIVISION, MARKET NEWS BRANCH FOR

**New York**

**Egg Market**  
ATLANTA, GA  
JULY 10, 1996

NEW YORK EGGS, JULY 10, 1996. FEDERAL-STATE

Prices were unchanged. The market tone was steady. Demand remained mixed, and was mostly moderate. Supplies were generally adequate.

PRICES TO RETAILERS, SALES TO VOLUME BUYERS, USDA GRADE A AND GRADE A, WHITE EGGS IN CARTONS, DELIVERED STORE DOOR, CENTS PER DOZEN.

RANGE EXTRA LARGE 80-82

LARGE 77-80 MEDIUM 62-65

SOURCE: USDA/AMS POULTRY DIVISION, MARKET NEWS BRANCH FOR ADDITIONAL INFORMATION, PLEASE CALL (404) 347-4121.

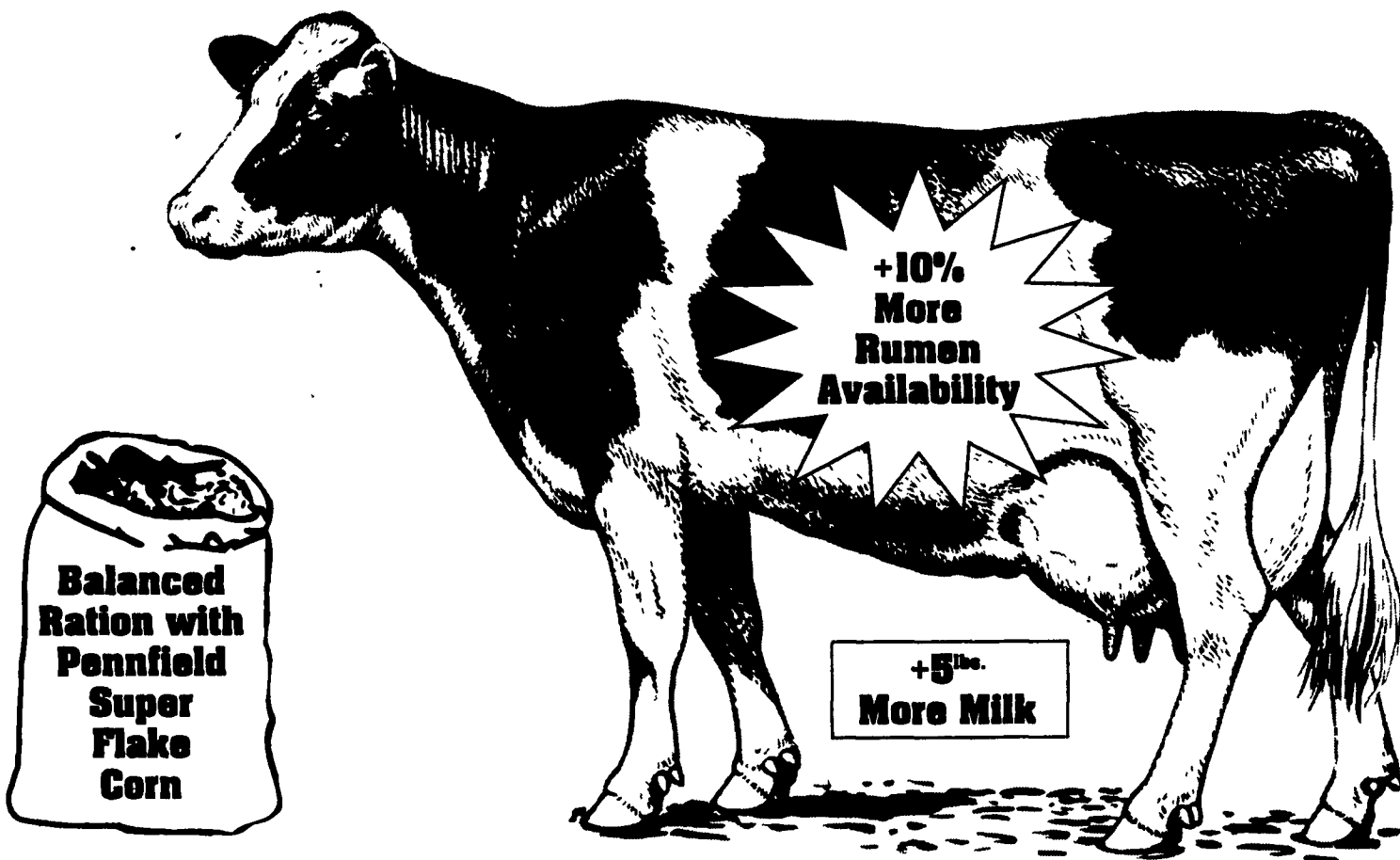
# Pennfield's New Super Flaked Corn

## ▶▶▶ THE PROCESS INVOLVES ◀◀◀

- 1) Cleaning the corn
- 2) Soaking or steeping the corn for a prescribed period of time
- 3) Applying steam to the corn before rolling
- 4) The specially conditioned corn is then rolled between 2 large rollers
- 5) The wet flat rolled corn is then processed by a special unit that removes the moisture and dries the finished flake back down to normal corn moisture
- 6) The finished product resembles a bright yellow corn flake (makes you want to get a bowl full and add milk and sugar)

### WHY IS SUPER FLAKED CORN BETTER?

Flat rolled steam flaking disrupts the cellular structure of the corn kernels (gelatinization) and increases sites for microbial attachments resulting in improved starch (carbohydrate) digestion in the rumen. In simple terms, the cow uses more of the nutrients because the rumen bugs can get to them and much less corn nutrient goes out in the manure.



### EFFECTS OF CORN PROCESSING ON DAIRY COW PERFORMANCE

Research conducted by the University of Arizona on Western Processed Flat Rolled Steam Flaked Corn shows the kind of improvement you can expect. In the studies below, average milk production INCREASED ABOUT 5 LBS./COW/DAY, protein yield increased about .2 lbs./cow/day and % usually increased, fat yield increased about .1 lb./cow/day and % decreased

Item	Regular Steam Rolled	Flat Rolled Steam Flake
Milk, lbs/day	83.8	88.4
Protein, lbs/day	1.18	1.28
Protein, %	3.11	3.2

Univ. of AZ, JDS 77 (Suppl. 1):383 1994

Item	Regular Steam Rolled	Flat Rolled Steam Flake
Milk yield, lbs/day	70.8	76.3
Milk protein, lbs/day	2.03	2.23
Milk protein, %	2.89	2.93
Milk fat, lbs/day	2.17	2.30
Milk fat, %	3.06	3.01

Univ. of AZ, JDS 77: 1038 1994

Item	Regular Steam Rolled	Flat Rolled Steam Flake
Milk, lbs/day	76.3	81.6
Protein, lbs/day	2.28	2.40
Protein, %	2.99	2.95
Fat, lb/day	2.32	2.40
Milk fat, %	3.06	2.96

Univ. of AZ, JDS 78 (Suppl. 1):210 1995

NOTE: Because of processing a flatter flake there is less weight per volume of feed. This means that less will fit on trucks and in bins. Volume will increase 5 to 15% depending on the inclusion level of corn. Keep this in mind when ordering feed. Also, grain scoops or volume based grain feeders need to be recalibrated for SUPER FLAKE containing feeds. Feed amounts required based on actual weights.



Round The Clock Service - 24 Hours Per Day

**pennfield feeds**

Office 1-800-732-0467

Orders 1-800-995-0333

Quality - Value - Service