

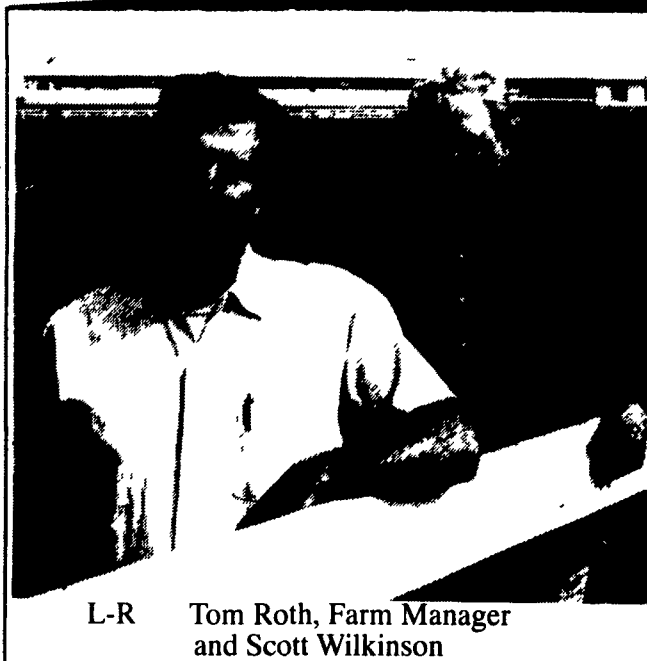
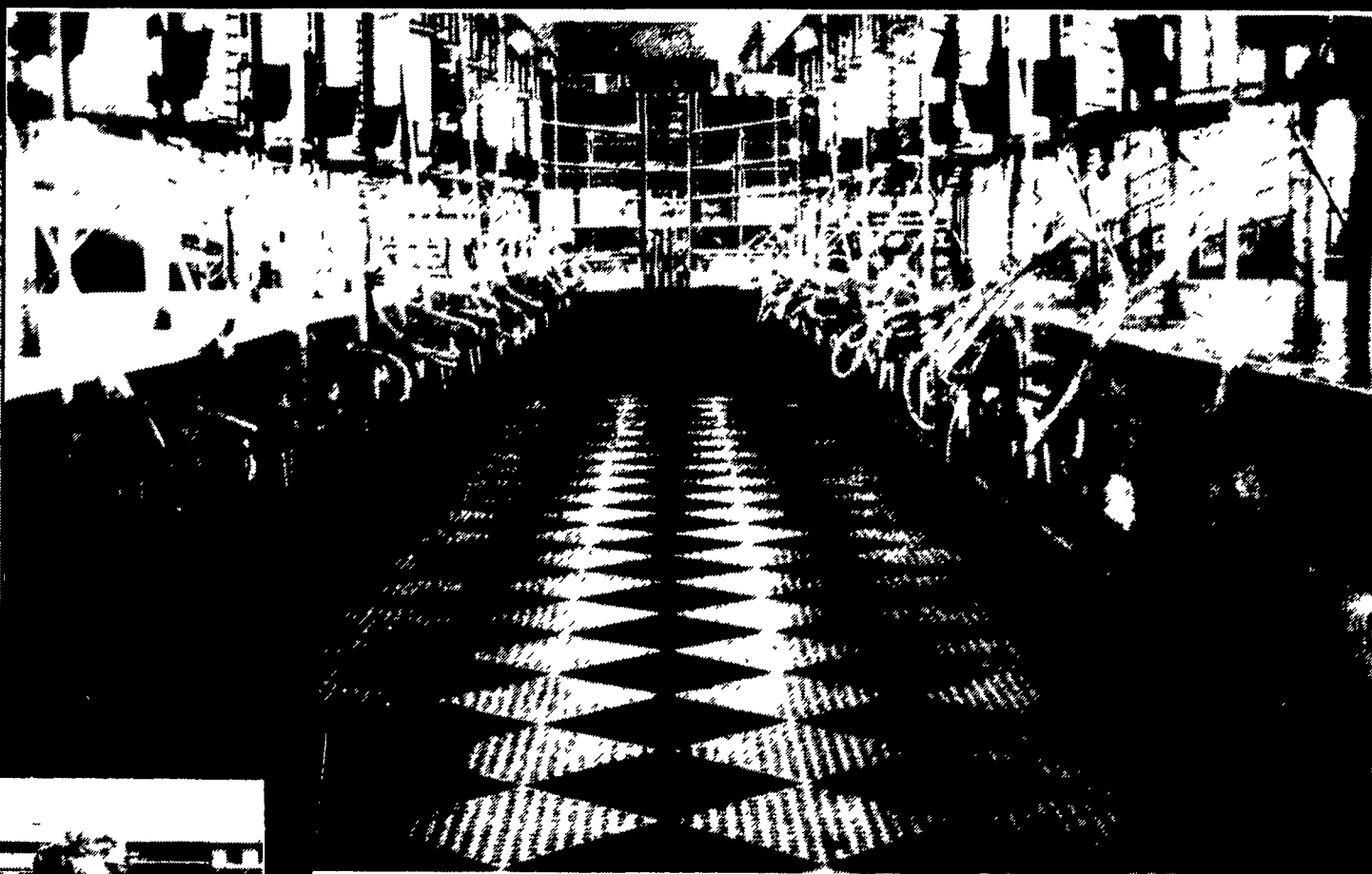
You're  
Invited...

# OPEN HOUSE

Thursday,  
July 18, 1996

Open House  
Festivities

Lunch  
Provided

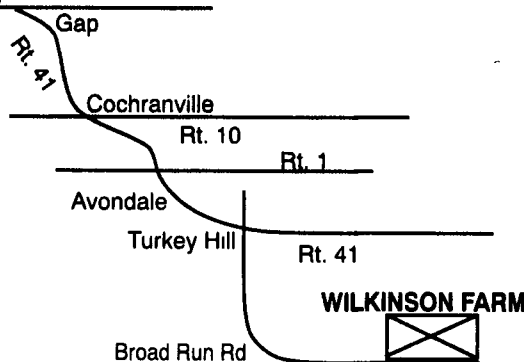


L-R Tom Roth, Farm Manager  
and Scott Wilkinson

## FEATURING:

- All New Milking Center
- New Unique Dairy Hospital Area
- Westfalia Double 12 Fast Exit Herringbone Parlor
- Metatron Milk Metering, ID System, Sort Gate
- Total Computerized System
- 6,000 Gal. Mueller Bulk Tank

Directions: RT 30



Milking Equipment Installation By



**FISHER &  
THOMPSON, INC.**

DAIRY & MILKING EQUIPMENT SALES AND SERVICE

MAIN OFFICE 15 NEWPORT RD., LEOLA, PA 17540  
717-656-3307

BELLEVILLE, PA  
717-667-6291

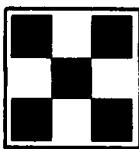
MIFFLINBURG, PA  
717-966-3900

Milking Equipment



WESTFALIA - TERRITORY MANAGERS -

James Bringe  
Spencer Port, NY  
716-352-7347



**PURINA MILLS, INC.**

**PHIL JAQUITH**

Field Marketing Manager  
717-291-9229



The Power  
Behind  
Environmental  
Control



Curtain Systems By



**LAPP'S BARN EQUIPMENT, INC.**  
SALES & SERVICE

**Curtain and Ventilation Systems**

717-422-8134 717-768-8301

Gates & Fencing By

QUALITY LIVESTOCK EQUIPMENT

**FREY BROTHERS INC.**

372 PUSEVILLE ROAD  
QUARRYVILLE, PA 17566

Clayton Metzler SALES SUPERVISOR  
717-786-2146



Your reliable source for  
Excellence in Genetics &  
Service

1-800-444-5456

Lancaster  
569-0411

**RUFUS BRUBAKER REFRIGERATION**  
Southern  
Service Center

76 Pumping Station Rd., Quarryville, Pa.

717-786-1617

Vic Leininger

New or Used Milk Tank And Refrigeration Equipment Needs!

Bulk Tank

**Atlantic Dairy  
Cooperative**

1225 Industrial Highway  
Southampton, PA 18966

1-800-645-MILK

