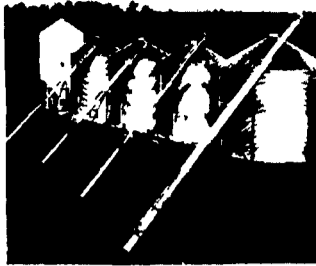


**Super Deal On New Case IH Baler For Compact - Quality - Economy Balers See Binkley & Hurst Bros. Today! Model 8420 Round Baler**



**SEE BINKLEY & HURST BROS. FOR ALL YOUR GRAIN AUGER NEEDS!**  
Call Or Stop in Now For What You Really Want In An Auger!

**If You Are Tired Of Poor Quality Come And See The All New Binkley & Hurst PRO-TOW Utility Trailers!**



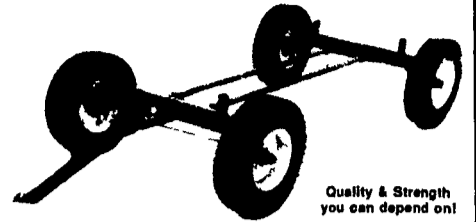
16 Foot Deck With Torflex Axles with 225-R15E Range Tires On Spoke Wheels, Sealed Beam Lights & Wiring, Pull Out Ramps, Heavy Duty 10,000 Lb. Jack Stand, Adjustable Hitch Height, 10,000 GVW, Ideal for Skid Loader Transport and Many Other Uses. We Also Sell A Full Line Of Truck Hitches & Brake Controllers With Installation. See Binkley & Hurst Bros. Today For More Quality!



The Double Reach Feature does not cause any problem about flexibility

8 - 10 - 12 - 13 and 14 Ton Gears Double Reach Coupling Poles Means Double Strength

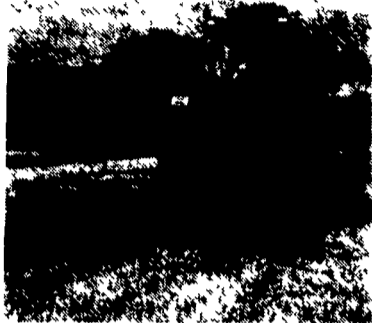
**Always Call Binkley & Hurst Bros. For All Your Running Gear Needs.**



Quality & Strength you can depend on!

**Need A Rake?**  
See Binkley & Hurst Bros. Today. In Stock Assembled Ready To Work. Working Width 11'2"

**Model RS 340X**  
Ask For Amos Sr.



**NEW CASE IH**

**The Perfect Match Mesh Wrap Dia. 50 to 75" Width 61.5"**

Make Baling Enjoyable Today!

Model 8465 Call Today

See Binkley & Hurst for a Quality Mesh Wrap Baler Today With a Case IH Maxxum Tractor To Speed Up Your Hay Harvesting Operation Now!



**\$16,600**

Size 39" Wide & Variable Diameter From 30" & 54" Bale Size With Electric Tie FOB Cash or Standard Rate Finance  
**Only \$7,650**  
One Only Tow Away A Good Buy Today NC4356

**BINKLEY & HURST BROS. INC.**

133 Rothsville Station Rd. P.O. Box 0395 Litz, PA 17543-0395 (717) 626-4705

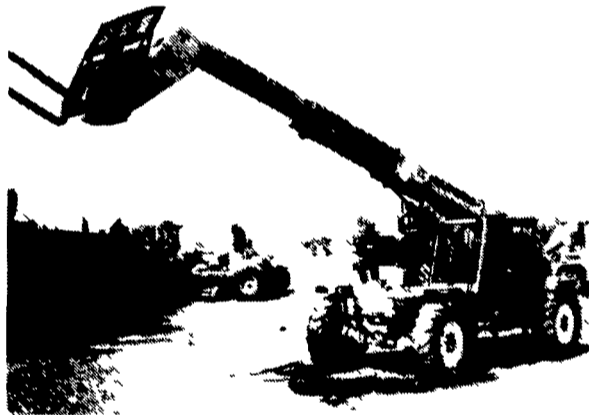
Farm Plan A Service of TIC Insurance 1-800-487-2978

# Best Buys In Used Equipment

**Check Our Listing For New Arrivals And Choose A Tractor Of Your Choice NOW!**

Ask About Reasonable Finance Terms

**Need A Lift? Binkley & Hurst Bros. has this unit ready for immediate delivery!**



**4 Wheel Drive, Zoom Boom Diesel, 1987 Model 1130 Selick with Factory Cab, Lift Height 36 Foot, 6,000 Lb. to 24 Foot, 1593 Hrs., Good Tight Machine. We service after you purchase as your servicing dealer. Ask about financing. \$24,900**

**4x4 Allis Chalmers 8050 Powershift**

150 HP, On The Go 12 Speed P Shift Trans, Recondition Engine with 100 Hour Rebuilt Warranty, Nice!  
UT3409



**IH 574 Diesel Tractor Rated 52 HP Local Trade**

Come & See



**1994 Chevy C-3500 w/350 5 Sp. Manual Trans**

7500 Miles w/12' Scott Flatbed w/Ploy Stake Racks w/Scott 5-Ton Hoist w/HD Trailer Hitch Plate  
**Ask for Dean Only \$18,900**



**Case 1845B Diesel**

72" Bucket, Nice! Let's Get Together Now! Ready For work. Ask about our financing.  
**\$10,900**  
UT3294



**One Of A Kind IH 886 Cab With Air Only 2525 Hrs., 540/1000 Dual Shaft PTO, Mint Condition**



**Case IH Maxxum 5140 MFD 4x4 Cab & Air, Power Shift 18.4x38 Tires**  
UT 3471



**60 HP Gehl Diesel Model 6620 Large High Capacity 72" Bucket Lift Over One Ton**



**Just Traded, Like New Case IH 895 MFD Cab 4x4, Row Crop Model**  
UT3470



**IH 1066 540/1000 PTO w/Hinson Cab \$9,950**  
UT3441



**Just Traded, 3688 Cab & Air Nice, Come & See**



**Case 4x4 2090 Cab Tractor Cab & Air, Power Shift, 110 HP Rating, Priced To Sell, Come & See**



**Summer Special Price Reduction Case IH Maxxum 5240 MFD Cab & Air 1069 Hrs.; 100 HP, Bar Axle**  
UT 3392



**Case 1816C Compact Unloader**

1 Owner, Twin Cylinder Onan Powered 48" Wide bucket, 1987 Model, 917 Hrs. Can be hauled on most pickup trucks, weight approx. 1900 to 2000 lb. range  
UT3431



**Used Case 1840 50HP Diesel Unloader** with Aux. Hyd., Heavy Duty Galaxy Tires, Lights, Counter-weight, Ready For Work (Case Cummins Powered For Long Lift Durability)

**USED TRACTORS - CHOOSE ONE TODAY!**

- (1) UT3414 M.F 1130 Tractor
- (2) UT3280 Massey Ferguson loader tractor model 231 diesel with less than 200 hrs., 3 pt & 540 PTO, 34 HP
- (3) UT3347 Case IH Magnum 7220 MFD, 155 HP Rate with 18 Speed Forward Power Shift & 4 Reverse, No Clutch Shifting Loaded
- (4) UT3358 Deutz DX160 4x4 Cab with 20 8x38 50% rubber
- (5) UT3395 IH 5488 4x4 Cab
- (6) Restored Case 730 Wide Front Gas with Eagle Hitch
- (7) UT3438 IH 884 2WD, Dual Remotes, 540-1000 PTO, 15.5x38 Tires
- (8) UT3475 Case 2294 2WD Cab & air, 129 HP Rating
- (9) UT3473 Case 1390 (rated 60 HP) with Loader
- (10) UT3472 IH 886 Cab with 2,525 Original Hrs.
- (11) UT3471 Case IH Maxxum 5k140 MFD Cab & Air Power Shift Loaded
- (12) Case 2090 4x4 Cab Tractor, 110 HP

- (1) UT3403 Hesston 6550 14 Foot Self-Propelled Mower Conditioner
- (2) UT3423 Case IH 885 4x4 Cab Tractor with 2255 Loader, Power Shift 2 Speed, 540-1000 PTO 1983 with 2447 hrs.

**BINKLEY & HURST BROS., INC.**  
**(717) 626-4705**

133 Rothsville Station Rd. P.O. Box 0395, Litz, PA 17543-0395 Located 1/2 Mile North of Rothsville

1-800-487-2978 Fax 717-626-0996