

Building Products

M McELROY METAL INC.
METAL ROOFING, SIDING & TRIM

ALUMAX
BUILDING PRODUCTS
METAL & ALUMINUM ROOFING
SIDING & TRIM

Wolverine
VINYL SIDING
Great looks that last a lifetime.

PLYCO CORPORATION
PRODUCTS LINES

EastCoast
FASTENERS & CLOSURES, I.C.

modern DOOR CORP.

PLY-FOIL
INCORPORATED

TrimLine

COMBO

DOOR SYSTEMS

EQUUS
QUALITY STALL SYSTEMS

Zimmerman

BARN EQUIPMENT

- Headlocks
- Automatic Head Gates
- Loop Stalls

Zimmerman's Roofing

Quality Building Materials

CALL FOR SPECIAL DISCOUNTS 1-800-782-2712
717-776-5951

It Pays To Use MSR Lumber

MACHINE STRESS RATED
LMA SPS-2 S-Dry
2250 f 1.9E



R.D. #3 Box 370-A1 • Cogan Station, PA • 17728

BLACK BEAR TRUSS CORP.

"OUR TRUSSES BEAR UP"

On Site In 10 Days

Thanks To Exclusive Laser Layout



DOUBLE CANTILEVER Bottom Chord Overhang



FLOOR TRUSSES



Up To 60' Clear Span.

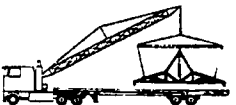
GAMBREL ATTIC



S66 - DOUBLE HOWE SCISSORS



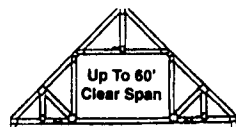
DUAL SLOPE (DOUBLE PITCH)



STUDIO WITH TWO BEARING POINTS



RAISED CENTER BAY



Up To 60' Clear Span

ROOM-IN-ATTIC



UP TO 80' CLEAR SPAN
HORSE BARN • RIDING ARENAS • COMMERCIAL & RESIDENTIAL



HOURS
Monday-Friday
7 AM to 6 PM
Saturday By Appt.

FOR A FREE QUOTE
Call (717) 998-2391 or
1-800-326-9689 or
Fax (717) 998-9875

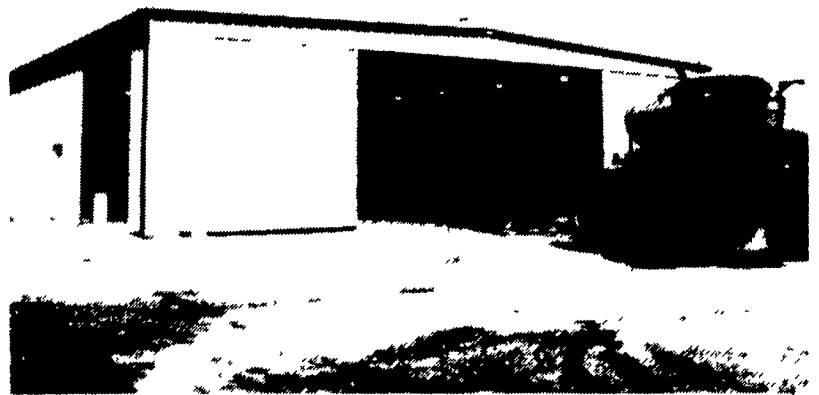
SPEEDWELL CONSTRUCTION INC.

70 North Esbenschade Road
Manheim, PA 17545
717-665-6861
FAX 717-653-6968

BUTLER
RURAL-BUILDER

No matter what type of building you're looking for shop, retail store, community building or storage facility - we build durable Butler® rural steel buildings with attractive architectural appeal.

Butler shop buildings are built to give you years of high-use value, low maintenance and maximum comfort. Solid, practical design and rugged steel construction make Butler buildings durable and functional for years to come.



Outside: Your Choice

The appearance of your new building is a critical factor. You just tell us what you'd like and we can build it!

Our structural systems are designed to give you complete freedom in planing the size and shape of your building.

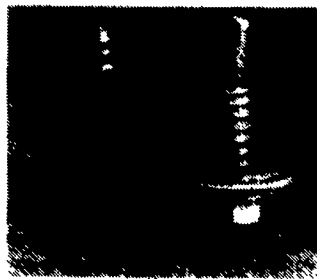


Products that Perform from the Building Systems Industry Leader

You can count on Butler to provide the best materials available.

For example, our standard exterior coating for painted panels is Butler-Cote® 500 FP finishing system, a full strength, 70% Kynar 500® & Hylar 5000® coating. Our coating will resist chalking and fading better than industry standard coatings.

Our fasteners represent another area where Butler offers more for your money. The Scrubolt™ fastener by Butler, available on the Butlerib wall and roof systems and the Shadowrib® wall system, is larger and more resistant to the pull-out forces of wind than industry standard fasteners.



If you are interested in any of the following buildings, please send us information on the checked.

- Mini Storage Building
- Shop Buildings
- Commercial Building
- Stone Building
- Storage Building
- Office Building

Name _____
Address _____

Town _____ State _____

Zip Code _____ Phone _____

Mail To: **SPEEDWELL CONSTRUCTION, INC.**
70 N. Esbenschade Rd., Manheim, PA 17545