

**Hatfield Direct**

Hatfield, Pa.  
Reports Supplied by Packer  
For Monday, July 1, 1996  
And Wednesday, July 3, 1996  
**MONDAY**  
TOTAL HOGS: 6950.  
LAST WEEK: 6038.  
TREND: COMPARED TO LAST MONDAY 2.42 HIGHER.  
55.5%-56.4% 216-269 LBS. BASE 57.00.  
56.5%-58.4% 216-269 LBS. 57.84-58.68.  
58.5%-60.4% 216-269 LBS. 59.52-60.36.  
FEW 216-269 LBS. 61.20.  
**GOOD'S RECEIVING**  
MONDAY CASH: 55.75.  
WEIGHT AND GRADE AVAILABLE.  
**WEDNESDAY**  
TOTAL HOGS: 6938.  
LAST WEEK: 6291.  
TREND: COMPARED TO LAST WEDNESDAY: 2.09 HIGHER.  
55.5%-56.4% 216-269 LBS.: BASE: 57.92.  
56.5%-58.4% 216-269 LBS.: 58.76-59.60.  
58.5%-60.4% 216-269 LBS.: 60.44-61.28.  
FEW 216-269 LBS.: 62.12.  
**GOOD'S RECEIVING**  
WEDNESDAY: NO SALE; WEIGHT AND GRADE AVAILABLE.

**New Holland Feeder Pigs**

New Holland, PA  
Wed., July 3, 1996  
Report Supplied by USDA  
TODAY: 705  
LAST WEDNESDAY: 642  
LAST YEAR: 802 HEAD  
COMPARED TO LAST WEDNESDAY, FEEDER PIGS 10.00 LOWER. ALL PIGS WEIGHED ON ARRIVAL AND SOLD BY THE HUNDRED WEIGHT.  
US#1-2: 86 HEAD 43-47 LBS. 62.00-74.00, WEIGHTED AVERAGE 46.02, WEIGHTED PRICE 63.60; 8 HEAD 41 LBS. 80.00, WEIGHTED AVERAGE 41.00, WEIGHTED PRICE 80.00; 59 HEAD 52-58 LBS. 62.00-70.00, WEIGHTED AVERAGE 56.34, WEIGHTED PRICE 63.16; 7 HEAD 83 LBS. 54.00, WEIGHTED AVERAGE 83.00, WEIGHTED PRICE 54.00.  
US#2: 10 HEAD 29 LBS. 64.00, WEIGHTED AVERAGE 29.00, WEIGHTED PRICE 64.00; 45 HEAD 31-38 LBS. 60.00-68.00, WEIGHTED AVERAGE 34.69, WEIGHTED PRICE 64.43; 36 HEAD 40-44 LBS. 50.00-56.00, WEIGHTED AVERAGE 42.67, WEIGHTED PRICE 53.44; 35 head 50-57 lbs. 58.00-60.00, WEIGHTED AVERAGE 52.06, WEIGHTED PRICE 58.84; 62 HEAD 60-68 LBS. 44.00-58.00, WEIGHTED AVERAGE 65.06, WEIGHTED PRICE 56.40; 22 HEAD 72 LBS. 52.00, WEIGHTED AVERAGE 72.00, WEIGHTED PRICE 52.00.

**Indiana Hogs**

SPRINGFIELD, IL  
JULY 3, 1996  
Indiana-Ohio Direct Hog close Indiana-Ohio Direct Receipts: Tuesday actuals 36,300 Week to date 106,700 Today's estimate 34,000 Same pd week ago 101,600 Wednesday week ago 35,500 Same pd year ago \*\* 69,000 Wednesday year ago \*\*35,400  
\*Receipts have changed due to change in reporting base. Barrows and Gilts: Steady to .50 Higher. Demand moderate on a moderate movement. Country: Plants: US 1-2 220-260 lbs. 54.00-56.50 Few 53.50 & 57.00 55.50-57.50 2-3 230-260 lbs. 47.50-53.50 210-230 lbs. 43.00-47.50 Sows: Steady to .50 Higher. US 1-3 300-450 lbs. 45.00-48.00 450-500 lbs. 48.00-51.00 500-650 lbs. 51.00-53.50 Few 54.00 Boars: 37.00-39.00 Eastern Combelt Direct Hog Trade Hot Carcass Value Information Trend: Steady to 1.25 Higher. Mostly .38 to 1.00 Higher. Estimated receipts: 32,200 as of 11:00 am Lean Value Evaluation Summary: % Lean 43-44 45-46 47-48 49-50 51-52 53-54 55-56 Lean Value \* Carcass wt\* 69.49 \* 73.02 \* 75.42 \* 77.50 \* 78.92 \* 80.00 \* 81.00 \* 170-191# \* 76.40 \* 77.50 \* 80.34 \* 80.50 \* 83.49 \* 85.85 \* 87.42 \* Backfat: \* 10th rib <1.39 \* <1.24 \* <1.14 \* <.99 \* <.89 \* <.74 \* <.59 \* Last rib <1.40 \* <1.29 \* <1.19 \* <1.09 \* <.99 \* <.79 \* <.59 \* SB 52.50-55.50 SG 53.50-57.00 SL 47.50-53.00 SZ 52.00-54.00 SC 55.50-57.50 SH 52.50-56.00 SW 45.00-48.00 TA 37.00-39.00 SD 54.50-56.50 SJ 43.00-47.50 SX 46.00-51.00 SF 51.00-53.50 SK 47.50-53.50 SY 51.00-53.50

**Diffenbach Auction Center**

New Holland, Pa.  
Monday, July 1, 1996  
Report Supplied by Auction  
TOTAL LOADS: 80.  
ALFALFA: 112.00.  
MIXED HAY: 77.00-175.00.  
TIMOTHY: 70.00-195.00.  
ORCHARDGRASS: 105.00-160.00.  
STRAW: 72.00-115.00.  
EAR CORN: 167.00-173.00.

**Green Dragon Hay**

Ephrata, Pa.  
Friday, June 28, 1996  
Report Supplied by Auction  
45 TOTAL LOADS.  
MIXED HAY: 15 LOADS, 69.00-135.00.  
ALFALFA: 1 LOAD AT 120.00.  
TIMOTHY: 14 LOADS, 110.00-155.00.  
STRAW: 10 LOADS, 72.00-94.00.  
EAR CORN: 3 LOTS, 160.00-182.00.  
ORCHARD GRASS: 2 LOADS, 65.00 AND 102.00.

**Good's Hay**

Leola, Pa.  
Wed., July 3, 1996  
Report Supplied by Auction  
TOTAL LOADS: 51.  
TIMOTHY: 107.00-170.00.  
STRAW: 85.00-120.00.  
CORN: 161.00-171.00.  
MIXED HAY: 80.00-142.00, 2 AT 40.00 AND 49.00.  
GRASS: 97.00-130.00.  
ALFALFA: 77.00-132.00.

**New Holland Hogs**

NEW HOLLAND, PA  
JULY 1, 1996  
TODAY 1171  
LAST MONDAY 1366  
LAST YEAR 1217  
TREND: Compared to last Monday barrows and gilts firm to 1.00 higher.  
BARROWS AND GILTS US 1 230-245 lbs 57.00-57.75 US 1-2 225-255 lbs 56.00-57.00 US 1-3 220-265 lbs 54.50-55.25 US 2-4 220-270 lbs 53.25-53.85 270-285 lbs 53.00-53.50 US 3-4 One lot 300 lbs 48.00

**Middleburg Hog Report**

Middleburg, Pa.  
July 1 & 2, 1996  
Report supplied by PDA  
BULK OF SUPPLY SOLD ON MONDAY AND REPORTED BY AUCTION.  
BARROWS AND GILTS: US#1&2 230-260 LBS. 55.00-56.25; US#1-3 235-270 LBS. 54.00-55.00.  
SOWS: US#1-3 300-650 LBS. 40.00-50.50.  
BOARS: ALL WEIGHTS, 28.50-33.50.

**Dewart Hay**

Dewart, PA.  
Monday, July 1, 1996  
Report Supplied by Auction  
6 LOADS OF HAY 76.00-84.00.  
STRAW: 2 LOADS, BOTH AT 61.00.  
CORN: 3 LOADS, 160.00-177.00.  
OATS: 2 LOADS, 2.80 AND 3.00 BU.

**State Graded Feeder Pig Sale**

Carlisle Livestock Market, Inc.  
Monday, June 28, 1996  
FEEDER PIGS: 1292 HEAD. COMPARED TO JUNE 14 STATE GRADED SALE, PIGS WERE MOSTLY 10.00 LOWER. ALL PIGS ARE FROM QUALIFIED OR MONITORED HERDS; THEY WERE WEIGHED ON ARRIVAL AND SOLD BY THE HUNDREDWEIGHT.  
US#1&2: 1054 HEAD. 241 HEAD 11-49 LBS. 70.00-76.00; 407 HEAD 51-59 .BS. 65.00-75.00; 273 HEAD 61-69 LBS. 52.00-70.00; 133 HEAD 73-110 LBS. 50.00-62.00.  
US#2: 203 HEAD. 31 HEAD 33-39 LBS. 75.00-77.00; 84 HEAD 40-49 LBS. 55.00-73.00; 88 HEAD 53-89 LBS. 50.00-60.00.  
AS IS: 35 HEAD 35-99 LBS. 50.00-57.00.  
NEXT STATE GRADED FEEDER PIG SALES WILL BE FRIDAY, JULY 12 AND 26. RECEIVING FROM 7 A.M.-11 A.M. SALE 1:30 P.M. SHARP!

**Regional Hay**

July 1, 1996  
Eastern, Pa.  
HAY & STRAW MARKET FOR EASTERN PA - (ALL HAY NO. 2 AND BETTER. PRICES PAID BY DEALERS AT THE FARM & PER TON.) HAY STEADY TO 10.00 HIGHER, STRAW STEADY.  
ALFALFA 80.00-110.00; MIXED HAY 70.00-100.00 FEW REPORTED 115.00; TIMOTHY 70.00-100.00 FEW REPORTED 115.00; STRAW 40.00-60.00; MULCH 25.00-40.00.  
SUMMARY OF LANCASTER CO. HAY AUCTIONS FOR WEEK ENDING 06/28/96. PRICES PER TON: LOADS: 101 HAY, 35 STRAW & 18 EAR CORN. ALFALFA 90.00-134.00; MIXED HAY 88.00-170.00; TIMOTHY 110.00-170.00; STRAW 60.00-102.00; EAR CORN 155.00-177.00.  
SUMMARY OF CENTRAL PA. HAY AUCTIONS FOR WEEK ENDING 06/28/96. PRICES PER TON: LOADS: 50 HAY, 8 STRAW & 23 EAR CORN. ALFALFA 70.00-134.00; MIXED HAY 53.00-125.00; STRAW 46.00-70.00; EAR CORN 148.00-177.50.

**Leinbach's Hay**

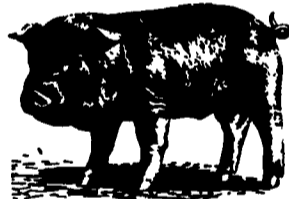
Shippensburg, PA  
June 29 and July 2  
Report Supplied by Auction  
35 LOADS.  
ALFALFA: 84.00-97.00.  
MIXED HAY: 52.00-80.00.  
TIMOTHY: 72.00-116.00.  
BROME GRASS: 44.00-100.00.  
ORCHARDGRASS: 60.00-100.00.  
STRAW: 102.00.  
EAR CORN: 140.00-166.00.  
MULCH: 20.00.

**Middleburg Hay**

Middleburg, PA  
Tues., July 2, 1996  
Report supplied by PDA  
54 LOADS TOTAL. 26 LOADS OF HAY.  
ALFALFA: 87.50-145.00.  
MIXED HAY: 60.00-135.00.  
TIMOTHY: 60.00-140.00.  
MULCH: 30.00.  
STRAW: 3 LOADS, 65.00-70.00.  
EAR CORN: 12 LOADS, 152.50-170.00.  
SHELLED CORN: 4.75 BU.  
BARLEY: 3.25-3.50 BU.  
OATS: 2.20-2.60 BU.

**PIGS**  
STATE GRADED SALE  
FRIDAY  
JULY 12 & 26  
1:30 P.M.  
AT  
**Carlisle**  
LIVESTOCK MARKET, INC.  
Exit 12 Off I-81 turn South  
(717) 249-4511 or  
Evenings Jim, 249-2359

**CARLISLE LIVESTOCK MARKET, INC.**  
**FED and FEEDER CATTLE SALE**  
TUES., JULY 9 & 23 7:00 PM  
Early Bird Pens Close 2 PM  
Turn South Off I-81 @ Exit 12  
Market (717)249-4511  
Evenings Jim (717)249-2359



**WALTER M. DUNLAP & SONS**  
Lancaster Stockyard  
1147 Litz, Pike, Lancaster, PA 717-397-5136  
OFFER ALL CATTLE & HOG FEEDERS  
**TWO MARKETING DAYS**

Monday	Wednesday
9 AM: Goats, Slaughter Calves, Sheep/Lamb Small Calves	6 AM-NOON Hog Receiving
9:30 AM: Bulls, Heifers, Steers, Cows	<b>FEEDER CATTLE SALE</b> 3RD WEDNESDAY OF EACH MONTH
1 PM: Hog	

**GRADED SOW SALE**  
2nd & 4th TUESDAY, EACH MONTH  
Receiving - 6 A.M. - 11 A.M.

**PENNFIELD GRAIN BANK**  
PENNFIELD HAGERSTOWN MARYLAND  
Grain drying and receiving station is now in full operation and ready to receive your Barley.  
Prices Week Of 07/08/96  
Corn \$5.80 Bu.  
Soybeans \$7.65 Bu.  
Barley \$3.40 Bu.

- No Storage Charges
- Prices Updated Weekly
- Grain Bank Balance Shown On Each Invoice
- No Hidden Charges

For every ton of qualifying dairy feed purchased you will receive one ton of grain bank hauled at no charge

Call 1-800-712-0467  
pennfield feeds

**Lancaster Farming**

INDEX  
Four Sections

**COLUMNS**  
Now is the Time..... A10  
On Being A Farm Wife..... B 4  
Family Living Focus..... B 7  
Ida's Notebook..... B 9  
Farm Women..... B11  
Consuming Thoughts..... B15  
Poultry Pointers..... C 3  
It's Showtime..... C 4

**HOME AND YOUTH**  
Homestead Notes..... B 2  
Home On The Range..... B 6  
Cook's Question Corner..... B 8  
Kid's Korner..... B10  
4-H Happenings..... B11, 21, 25  
FFA Happenings..... B20, 23  
You Ask, You Answer..... B24

**FEATURES**  
Weather Station Protects..... A24  
Threshing Festival..... A34  
Sullivan Dairy Princess..... B12  
Tioga Dairy Princess..... B14  
Wayne Dairy Princess..... B18  
Bucks-Montgomery Princess B19  
Philadelphia Fair..... D 2

**DAIRY**  
Holstein USA Convention.. A20  
Holstein Sale..... A22  
Chester Milk Lines..... A27  
Pa.DHIA FOCUS..... A28  
Guemsey Convention..... A32  
Jersey Convention..... A33

**DEPARTMENTS**  
Editorial..... A10  
Farm Calendar..... A10  
Farm Forum..... A10  
Futures..... A16  
Mailbox Markets..... B26  
Sale Reports..... B30  
Public Auction Register..... B34  
Business News..... C 6  
Classified Ads..... C 8, D 5