

Umodel mack76 dump
20Ton interstate 94trailer
580D w/cab TLB John
Deere 350D 6way ROPS
crawler \$40,000 OBO.
Montgomery Days:
(215)646-6951, Nights:
(215)699-3738

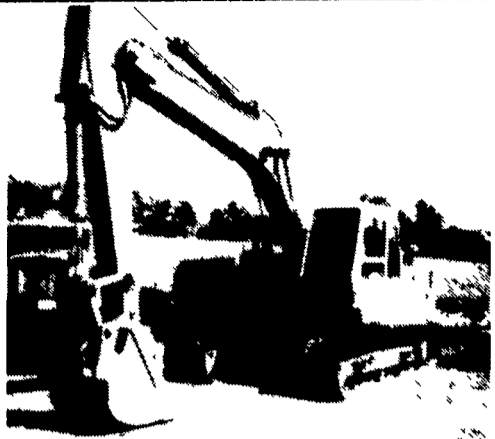
WANTED: Used industrial
grapple bucket for Gehl
4625 skid loader. Gussin
bale chopper
410-643-5017.

Universal Concrete Wall
Forming System. Numer-
ous Sizes and Accesso-
ries. (610)395-6871. Con-
tact Tom Grannetino.

**Construction
Equipment
For Sale**

- 1986 455 E JD 1-1/4
Yrd Loader, 2,900 hrs
- 1985, 86 & 88 843
Bobcat Loaders,
1332-2400 hrs.
- 1985 9-Ton Eager
Beaver Triaxel Trailer
- 1989 John Deere 855
Loader/Backhoe,
1,300 hrs
- 1988 6 Ton Int Flat
Deck Tandem Trailer

(215)943-4800

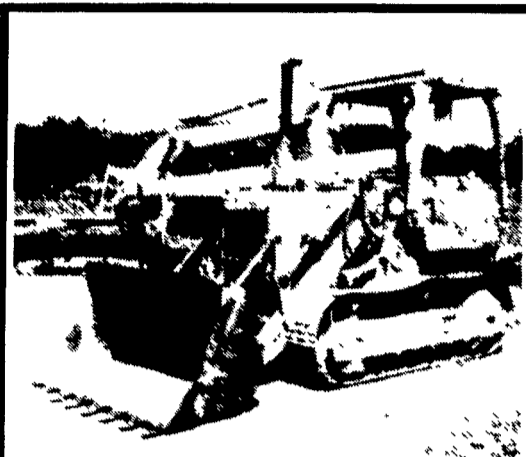


Daewoo DH220LC Excavator

1400 hrs. w/warranty remaining. Like new.

\$69,500.00 717-359-9423 after 6:00 pm

- RENT FOR LESS -
**STONEY CREEK
RENTALS**
NEW LOCATION NEW PHONE NUMBER
Kutztown, Pa. 19530
NOW RENTING: CRAWLER LOADER
CRAWLER DOZER
FULL-SIZE BACKHOE
HYDRAULIC EXCAVATOR
- DAILY, WEEKLY, OR MONTHLY RENTALS -
610-683-9583



Cat 955 Loader

Excellent Mechanically

\$19,500.00 717-359-9423 after 6:00 pm

- ★ Michigan 75 Rubber Tire Loader,
2 1/2 Yd., 4-53 Detroit, 2 New Tires,
Cab, Heat, Lights, Very Nice. \$9,500
 - ★ Cat 951B Loader,
Good Condition,..... \$8,500
 - ★ Cat 12 Grader, 14' Sliding Blade, Cab,
Heat, Light, Very Nice,..... \$8,500
 - ★ '92 Stow 1 Ton Roller,
Excellent Cond., \$2,750
- (215)672-9545**

**3 SILOS AND
UNLOADERS**

MARTIN'S SILO REPAIR

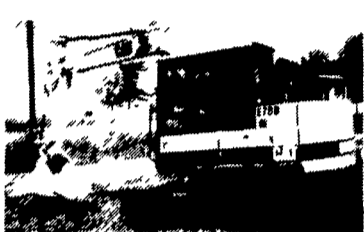
Moving Concrete Stave Silos

- Gunite Relining
- Fill Pipes
- Distributors
- Roofs
- Replacement Doors
- General Repair

907 Centerville Rd.
New Holland, PA 17557
(717) 445-9834



1989 Komatsu WA 180, good rubber,
nice machine..... \$39,500



1989 Cat E70B
w/ 1800 Hours..... \$28,500



Cat D3E w/Backhoe, 85% U.C., Low
Hours..... \$21,500



1988 Simon 4x4, 40' Manlift, 2200
Hrs., Rotating Basket..... \$17,900



Cat 966C, 90% rubber,
clean..... \$28,500



1989 JD TLB, low hours,
clean..... \$24,500

- Gehl DM54 4x4 Forklift..... \$22,000
- 1988 JD 550G w/6-Way Blade, 80% U.C., Nice..... \$33,000
- Cat D3C LGP
- Ford 655A TLB

AA Equipment

717/529-2512

No Sunday Calls

1797 Robert Fulton Hwy., Quarryville, PA 17566

• We Buy & Sell

- Financing Or Lease Purchase Available
- 90 Down NO Payment For 90 Days



National 455 Truck Crane

16,000 Cap., 86 Ft. working Ht., 18' Steel Deck Body.
Bought new in 1986. Very good condition
Will mount on your truck.

\$15,500.00 717-359-9423 after 6:00 pm

Case 602, 1102 Rollers

Demonstrators

Call For Special Pricing

- 1986 Case 580E, canopy, 2WD,
Standard hoe..... \$16,900
- 1989 Case 1835C Unloader..... \$9,750
- Case 1155E w/Cab..... \$37,500
- Case 252 Roller..... \$10,900
- JD 210C Loader tractor, 1989..... \$15,900

Rental Returns

602B, 1102 Rollers in Stock
Stanley 695 Hammer
Call For Pricing on Rental Return
90 Series Case Excavators

New & Used Trailers in Stock Call For information

Vernon E. Stup Co.

5859 Urbana Pike Frederick, Md. 21701
301-663-3185

*"72 years combined
experience"*

*New & Used Silos, Tear
Down & Rebuild, New &
Used Roofs, Distributors,
Filler Pipes, Cage Ladders,
Extensions, Replaster*

Wayne Motter (717) 776-3624
Dean Motter (717) 776-5700

ED HEBERLE

New & Used Concrete Stave Silos
Silomatic & Badger Unloaders

Pipes - Distributors - Roofs -
Doors & All General Repair

200 Mt. Rock Rd
Newville, PA 17241
(Office) 717-776-4661
leave message

Bunker Silos

Precast Concrete Bunker Silos
or commodity buildings built
to suit your needs. Bunkers
available in 8 Ft. or 12 Ft. High

**KEYSTONE
CONCRETE
PRODUCTS
INC.**

"WAFFLE SLAT"
Sil-Co Concrete

477 East Farmersville Rd., New Holland, PA 17557
(717) 355-2361

**FOR NEW AND USED
CONSTRUCTION
EQUIPMENT PARTS
AND ATTACHMENTS
CALL
H.E.L.P., INC.**

**(717) 469-0039
1-800-446-0505**

Specializing In Caterpillar
Parts also available for Case,
John Deere, IHC, Fiat, Etc.

**HEAVY EQUIPMENT
LOADER PARTS, INC.**

10070 Allentown Blvd.
Grantville, PA 17028

**PARTS PRICED RIGHT
DISMANTLING MOST MAKES
& MODELS**

OF CONSTRUCTION EQUIPMENT

Cat	IHC	Galion
Case	Michigan	Wabco
John Deere	Hough	Dynahoe
Trojan	Terex	Koehring
Drott	Hein Werner	AC/Fiat Allis
	& Others	

Over 650 Machines Dismantled

NATIONWIDE PARTS LOCATING SERVICE
In addition to our own large inventory, we have two
computerized parts locator services, nationwide &
Canada, ready to serve you. In less than a minute,
over 600 used & new parts & equipment suppliers
will receive your parts request. Parts are located
easily & at substantial savings. Try Our Services.
Save \$\$\$ Parts Shipped Anywhere Direct To
You. All Parts Guaranteed
"We Return All Phone Calls"

**BALANDA EQUIPMENT
CO., INC.**

P.O. Box 407 • Route 29 • Palm, PA 18070
Phone: (215) 679-3900
• Fax: (215) 679-8727

TOLL FREE: 1-800-322-8030

WANT TO BUY all makes
and models of construction
equipment.
(301) 694-6148,
(301) 371-9299 fax.

**3 SILOS AND
UNLOADERS**

WARNING, ALL SILO OWNERS

It's important that you know your silo
needs maintenance. Your silo will not
fall when it's empty. Please check your
silo for damage or check
your insurance policy.

*Don't Wait Until The Last Minute For Relining
Your Silos With Shotcrete, Interior Work On Silos
And Walls and Trowelled Smooth*

Lancaster Silo Co., Inc.

2008 Horseshoe Rd. • Lancaster, PA • (717) 299-3721
CALL TOLL FREE 1-800-770-3721