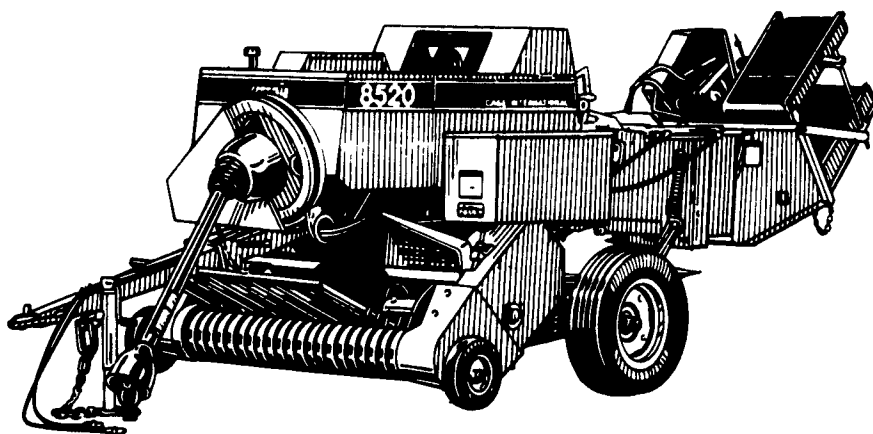
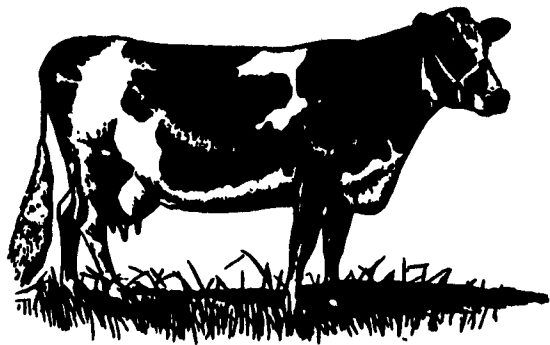


# "Her" Choice



If Holsteins could talk, the conversation around the hay manger would be "Case IH Center Line Balers".

## Why? More leaves per bale.

Our low profile pickup allows alfalfa hay to retain more dry leaves. We don't lift the windrow as high, saving leaves at the pickup. We also start to compress the hay before it enters the chamber to lock in leaves throughout the flake...leaves don't settle to the bottom and fall out the back of the baler to the degree of older style square balers.

More leaves means more milk, without increased overhead. Many studies show increased production of \$1,000 per year over a milking herd of 100 with 2% leaf savings!

Case IH Center Line Balers...one of the quickest ways to increase milk production without adding cows. Improve your bottom line with improved leaf savings.

## See your local Case IH dealer today

### W.C. Crytzer Equipment, Inc.

RR 8, Box 283, Kittanning, PA 16201

(412) 543-2441 FAX (412) 548-5580

W.C. Crytzer Equipment, Inc. is located near the intersection of Routes 28, 66 and 85 near Kittanning, Armstrong County. It is approximately 40 miles north of Pittsburgh, 60 miles from the Ohio border, and roughly half-way between Butler and Indiana. It serves customers in a 50-mile radius.

William Crytzer has owned the dealership for 22 years. It has been at its present location since 1980.

The dealership employs 18 people. In the 80x80 foot repair shop, three shop foremen supervise the repair of farm equipment, trucks and lawn and garden equipment.

The foremen have more than 18 years service with the company, and the mechanics are factory school trained.

A tractor trailer and roll-back straight trucks are available, if needed, to haul equipment to the dealership for repairs.

The truck repair department is open from 7 a.m. until 10:30 p.m. weekdays.

Crytzer Equipment is also an affiliate of White Volvo of Pittsburgh for truck sales, service, parts and warranties.

Crytzer Equipment sells the full line of Case-IH equipment and products, including small tractors and the Maxxum and Magnum lines of farm tractors.

It is also the top Vermeer dealer in a 10-state area, according to Bill Crytzer, and is one of the largest Cub Cadet dealers in the area. It also sells White Outdoor Products and Ecco and Husqvarna chain saws.



Show Room and Customer Sales Area

The computerized parts department has 342,000 parts in inventory. The parts department and sales showroom are open 8-5 weekdays, and 8-4 on Saturday. Crytzer Equipment ships parts daily by UPS.