



JULY 1-7, 1996  
 INDEPENDENCE DAY, JULY 4.

### WHAT TO DO ON JULY 4

Besides being celebrated as the birthdate of our nation, July 4 is also the birthday of those letter-writing twins, Abigail Van Buren ("Dear Abby") and (Dear) Ann Landers. George M. Cohan, born July 4, 1878, found his own way to celebrate Independence Day. In 1906 he wrote the popular, patriotic song, "You're a Grand Old Flag," followed by the well-known "Yankee Doodle Dandy" in 1908. Cohan was also an actor, producer, and playwright. "Over There" and "Give My Regards to Broadway" were others of his hits. In Hannibal, Missouri, July 4 is Tom Sawyer Fence Painting Day. So, write a letter, sing a song or two, then paint the fence.



*You're a grand old flag, You're a high-flying flag, And forever in peace may you wave. . . .* - George M. Cohan

#### TIP OF THE WEEK

Salt added to wash water helps prevent colored fabrics from running.

### CURRIED CORN AND TOMATO SOUP

- 3 tablespoons butter
- 3 tablespoons flour
- 2 cups milk
- 1 teaspoon curry powder
- dash of cayenne, to taste
- 1 cup chicken stock
- 1 cup canned tomatoes and juice, crushed
- 1 teaspoon dill weed
- 5 ounces frozen corn

low heat for 1 minute. Add milk and whisk over medium heat until thickened. Str in the curry powder and cayenne, then add chicken stock, tomatoes, dill, and corn. Simmer 10 minutes, stirring occasionally. This soup is best when flavors are allowed to blend for at least a couple of hours. Reheat to serve.

Makes 4 servings.



Melt butter, add flour, and stir with whisk over

### THE OLD FARMER'S WEATHER PROVERBS



*If the first of July be rainy weather, twill rain more or less for four weeks together.*

*Rain on St. Mary's Day (July 2) means rain for a month.*

*A shower in July, when the corn begins to fill, is worth a plow of oxen, and all belongs there till.*

*Northern wind brings weather fair.*

### OK City Feeder Cattle

OKLAHOMA CITY, OK  
 JUNE 26, 1996  
 Compared to last Monday: Feeder cattle steady to 2.00 higher. Steer and heifer calves steady. Demand good for feeder cattle, moderate for calves. Hot muggy temperatures have made fleshy new crop calves very undesirable. Quality many plain to average. Flesh conditions outweighing quality and many in thin to medium flesh. Weigh-ups gaunt to full. Slaughter cows uneven, Cutter cows .50 higher, Utility cows .50 to 1.00 lower. Slaughter bulls .50 lower. Packer demand limited with only a few buyers controlling the market. Total of 725 cows and bulls sold with 80 percent going to packers. Receipts this week 13,200; last week 10,404; last year 12,493. Supply consisted of 77 percent yearlings over 600 lbs; 18 percent calves and light yearlings under 600 lbs; 5 percent cows and bulls. Prices follow with weight average weight and price in parenthesis. Feeder Steers: Medium and Large 1 300-400 lbs (350 lbs) 62.00-66.00 (65.01); 400-450 lbs (431 lbs) 60.00-64.00 (61.63); 450-500 lbs (487 lbs) 60.00-65.50 (63.53); new crop calves 500-600 lbs (550 lbs) 54.75-59.75 (58.10); 500-550 (529 lbs) 62.00-66.00 (62.91); 550-600 lbs (574 lbs) 61.50-65.50 (63.19); 600-650 lbs (631 lbs) 60.50-64.60 (62.86); 650-700 lbs (683 lbs) 60.50-64.75 (62.33); 700-750 lbs (729 lbs) 60.00-65.35 (62.90); 750-800 lbs (778 lbs) 58.75-65.75 (63.01); 800-850 lbs (821 lbs) 60.00-65.50 (62.98); 850-900 lbs (873 lbs) 58.35-64.25 (61.81); 900-1000 lbs (950 lbs) 57.75-62.00 (59.31). Holstein: Large 2 415 lbs 33.00; 600-700 lbs 40.25-42.00; 870 lbs 42.00. Feeder Heifers: Medium and Large 1 300-400 lbs (350 lbs) 50.00-55.75; (55.12) 400-500 lbs (450 lbs) 50.25-57.75 (55.72); new crop calves 500-600 lbs (550 lbs) 51.00-55.75; 500-550 lbs (536 lbs) 56.25-59.75 (57.60); 550-600 lbs (572 lbs) 55.25-59.25 (56.79); 600-650 lbs (628 lbs) 58.00-60.50 (58.97); 650-700 lbs (674 lbs) 56.75-62.00 (59.32); 700-750 lbs (727 lbs) 57.50-62.00 (60.39); 750-800 lbs (770 lbs) 57.75-62.25 (60.70); 800-875 lbs (850 lbs) 56.00-58.50 (56.97). Slaughter Cows: Average dressing Cutter 29.50-32.50, Utility 31.00-34.50; high dressing Cutter 32.00-35.00, Utility 33.50-36.75; low dressing Cutter 26.00-29.50, Utility 28.00-31.50. Canner and low Cutter 21.50-24.75, light weight 16.00-20.00. Estimated dressed cost at Oklahoma National Stockyards: Cutter 65.70; Boning Utility 65.35; Breaking Utility 60.80; Can-

ner 54.95. Bulls 70.20. Slaughter Bulls: Yield Grade 1 1400-2100 lbs average dressing 38.00-40.50; high dressing 39.00-42.00, high dressing/high boning 44.00-46.00; low dressing 34.50-38.50.

### Frederick Livestock

JUNE 24, 1996  
 SLAUGHTER COWS: 84 hd: 1.00-2.00 higher; Utility 32.00-37.00; High dressing 37.00-39.75; Canners 28.00-32.00; Shelly 28.00 down.  
 BULLS: YG #1 1400/2200 lbs, 39.75-43.00.  
 FED STEERS: Few offered couple sel stags 46.00-48.00.  
 FED HEIFERS: Non.  
 VEAL CALVES: 301 Hd: Choice none; Good 180/250 lbs, to 45.00; Culls prices lower; 85/110 lbs, 22.00-29.00; 50/80 lbs, 16.00-25.00.  
 FARM CALVES: Holstein bulls #1 95/120 lbs, 50.00-67.00; Few to 72.00; #2 80/100 lbs, 30.00-50.00; Holstein heifers #1 95/120 lbs, 75.00-90.00; #2 80/100 lbs, 40.00-67.00; Beef x bulls to 45.00.  
 BUTCHER HOGS: 32 Hd: 2.00-3.00 lower; US #1&3 225/260 lbs, 50.00-51.50.  
 STEERS: Few herefords 500 lbs to 47.50.  
 HEIFERS: 300/500 lbs, 30.00-38.50.  
 BULLS: 300/500 lbs, 36.00-43.00.  
 LAMBS: Choice 100/115 lbs, 95.00-99.00; 75/90 lbs, 78.00-88.00; 1 60 lbs at 74.00.  
 SHEEP: To 34.00.  
 GOATS: None.  
 PIGS & SHOATS: By the head 20/30 lbs, 15.00-23.00; By the lb 4 hd 91 lbs at 50.00; 1 145 lbs at 44.00.  
 SOWS: Few offered, 400 lbs to 38.00; Boars 615 lbs to 38.00.

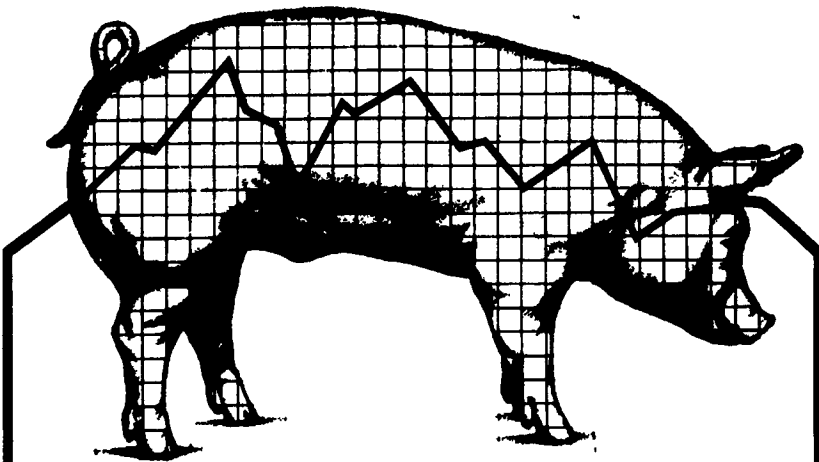
### Westminster Livestock

JUNE 25, 1996  
 SLAUGHTER COWS: 97 hd: 1.00 higher; Utility 32.50-36.75; High dressing 37.00-39.25; 1 at 41.00; Canners 28.00-32.00; Shelly 28.00 down.  
 BULLS: 12 hd: YG #1 1200/2000 lbs, 41.00-45.50; YG #2 38.00-40.50.  
 FED STEERS: R Ch-Pr 1200/1450 lbs, 63.00-65.00; Ch 1000/1200 lbs, 60.00-63.00; Ch Hol 1200/1400 lbs, 52.00-54.75.  
 FED HEIFERS: Few offers Lw ch 800/1000 lbs, 51.00-55.00; Few 1350 lbs, ch 4 to 54.25.  
 VEAL CALVES: 210 hd: Choice none; Good 200/300 lbs, 51.00-56.00; 150/200 lbs, 40.00-46.00; Culls 85/110 lbs,

20.00-27.00; 50/80 lbs, 15.00-22.00.  
 FARM CALVES: Holstein Bulls 10.00-12.00 lower; #1 95/120 lbs, 50.00-71.00; #2 80/100 lbs, 30.00-50.00; Holstein Heifers few 90/120 lbs, 85.00; Beef X bulls 30.00-42.00; 1 at 55.00.  
 BUTCHER HOGS: Light run US #1-3 220/260 lbs, 53.50-54.25; Few 350 lbs to 40.50; 1 lot 273 lbs at 51.25.  
 STOCK CATTLE: 148 hd.  
 STEERS: 200/400 lbs, 40.00-50.00; 400/600 lbs, 42.00-50.00; 600/800 lbs, 40.00-46.00; Hol all wts 30.00-37.00.  
 HEIFERS: 300/500 lbs, 30.00-40.00; 1 at 48.00; 500/700 lbs, 35.00-43.00; 2 Hol springing heifers at 600.00 & 745.00.  
 BULLS: 300/600 lbs, few to 46.00; 600/800 lbs, 37.00-42.00; Hol 300/500 lbs, 28.00-35.00.  
 LAMBS: 80 hd; Light weights lower; Ch 90/110 lbs, 99.00-101.00; 60/90 lbs, 75.00-85.00; 30/60 lbs, 85.00-90.00; 2 at 117.00; Med-good all wts 65.00-77.00.  
 SHEEP: 25.00-40.00, few 44.00-52.00.  
 GOATS: 60 hd; Large billies 80.00-122.00; Nannies 50.00-70.00; Medium 40.00-51.00; Small 23.00-40.00.  
 PIGS & SHOATS: By the head 20/35 lbs, 16.00-31.00; 1 lot 95 lbs at 58.00; By the lb culls 100/135 lbs, 60.00-65.00; 140/160 lbs, 40.00-47.00.  
 SOWS: 400/500 lbs, 42.00-44.00; 500/700 lbs, 43.00-46.50; Thin 29.00-33.00; Boars to 37.25.

### Valley Stockyards

ATHENS  
 JUNE 24, 1996  
 HOLSTEIN HFR CALVES: To 75.00.  
 VEAL CALVES: To 51.50.  
 VEALER BULL CALVES: 50.00-95.00.  
 SLAUGHTER CALVES: 30.00 & down.  
 GRASSES & FEEDERS: 18.00-47.50.  
 LAMBS: To 107.50.  
 SHEEP: 32.00-43.00.  
 HOGS: 200-250: 57.00-59.50.  
 SOWS: 34.00-44.00.  
 BOARS: To 32.00.  
 PIGS: 21.00-24.50.  
 HEIFERS: To 44.00.  
 STEERS: To 41.00.  
 STEERS, FEEDER: 27.50-31.50.  
 BULLS: 26.50-41.75.  
 COWS, GOOD: 33.25-39.75.  
 COWS, MEDIUM: 27.50-32.25.  
 COWS, POOR OR SMALL: 26.75 & down.  
 CATTLE MARKET: Good cows higher.  
 CALF MARKET: Steady.  
 HORSES: To 650.00.  
 PONIES: None.  
 GOATS: To 102.00.



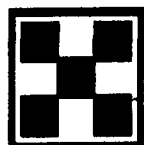
## HOW HAS YOUR CASH FLOW BEEN?

### Purina Mills, Inc. CFA PROGRAM

Offers Stability To Your Marketing

OCT. 94 - SEPT. 95 PRICES:

PACKER BASE \$39.91/cwt  
 PURINA CFA \$46.49/cwt



Call now to get the details on how you can even your cash flow with Purina Mills, Inc. CFA Program

**PURINA MILLS, Inc.**  
 800-873-5300

Manufacturing Facilities: Lancaster, Harrisburg, Hagerstown (2/97), Wyalusing and Knoxville

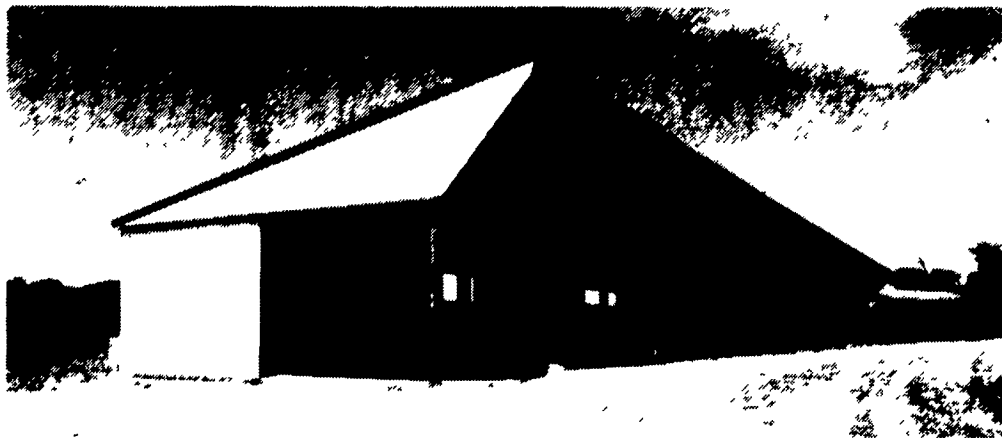
# PRECISE CONCRETE WALLS, INC.

Agriculture - Residential - Commercial

For All Your Concrete Walls And Construction Needs

- Buildings • Basement • Floors
- Retaining Walls • Footer
- SCS Approved Manure Storage Pits
- All Types Of Flat Work

Specializing In  
**Manure Storage**  
 Round or Rectangular  
 In Ground or  
 Above Ground



Virginia Style Heifer Barn With 8' Deep, 180' Long, 12' Wide Slatted SCS Approved Concrete Manure Pit

Invest In Concrete, Quality Work That Will Last A Lifetime

CALL FOR **FREE** ESTIMATES AND SEE HOW AFFORDABLE CONCRETE WALLS CAN BE

CONTACT  
**ROY SENSENIG**  
 717-355-0726

# PRECISE CONCRETE WALLS, INC.

301 Overly Grove Road, New Holland, PA 17557