

Hatfield Direct

Hatfield, Pa.
Reports Supplied by Packer
For Monday, June 24, 1996
And Wednesday, June 26, 1996
MONDAY
TOTAL HOGS: 6034.
LAST WEEK: 6604.
TREND: COMPARED TO LAST MONDAY 3.50 LOWER.
55.5%-56.4% 216-269 LBS. BASE 54.58.
56.5%-58.4% 216-269 LBS. 55.42-56.25.
58.5%-60.4% 216-269 LBS. 57.09-57.93.
FEW 216-269 LBS. 58.77.
GOOD'S RECEIVING
MONDAY CASH: 53.25.
WEIGHT AND GRADE AVAILABLE.
WEDNESDAY
TOTAL HOGS: 6291.
LAST WEEK: 6198.
TREND: COMPARED TO LAST WEDNESDAY: .75 LOWER.
55.5%-56.4% 216-269 LBS.: BASE: 55.83.
56.5%-58.4% 216-269 LBS.: 56.67-57.50.
58.5%-60.4% 216-269 LBS.: 58.34-59.18.
FEW 216-269 LBS.: 60.02.
GOOD'S RECEIVING
WEDNESDAY: NO SALE; WEIGHT AND GRADE AVAILABLE.

New Holland Hogs

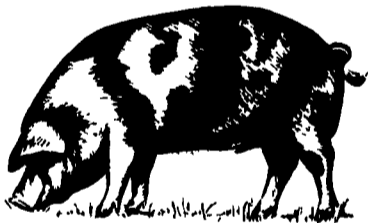
NEW HOLLAND, PA
JUNE 27, 1996
TODAY 642
LAST WEDNESDAY 893
LAST YEAR 1543
TREND: Compared to last Wednesday feeder pigs 10.00 lower. All pigs weighed on arrival and sold by the hundred weight.
WEIGHTED WEIGHTED HEAD WEIGHT PRICE AVERAGE PRICE FEEDERS US 1-2 10 27 86.
00 14 35 74.00-80.00 42 40-44 58.00-66.00 39 47-49 70.00-80.00 101 50-57 76.00-86.00 US 2 52 21-25 80.00-100.00 6 27 52.00 16 28 76.00 23 36-39 72.00-76.00 46 40-47 70.00-80.00
SLAUGHTER 49 14-40 20.00-60.00 19 55-80 50.00-60.00 ALL PIGS CONSIGNED TO WEDNESDAY FEEDER PIG SALE MUST ORIGINATE FROM A QUALIFIED NEGATIVE OR MONITORED HERD.

S & J Villari Livestock Feeder Pig Sale

Millboro, Del.
June 24, 1996
Report Supplied by Auction
422 HEAD
30-39 LBS. 69.00-80.00; 40-49 LBS. 71.00-80.00; 50-59 LBS. 71.00-73.00; 60-69 LBS. 62.00-65.00; 70-79 LBS. 55.00-59.00.

Indiana Hogs

SPRINGFIELD, IL
JUNE 27, 1996
Barrows and Gilts: Steady to Firm. Demand moderate on a light to moderate movement. US 1-2 220-260 lbs. 52.50-54.50 Few 52.00 & 55.00 US 2-3 230-260 lbs. 45.00-52.00 210-230 lbs. 41.00-45.00
Sows: Under 500 lbs. Steady to .50 Lower; over 500 lbs. Steady. US 1-3 300-450 lbs. 43.00-45.00 450-500 lbs. 45.00-49.00 500-650 lbs. 49.00-51.00 Few 52.00
Boars: 37.00-38.00



Lancaster Hogs

Lancaster Stockyards
Wednesday, June 26, 1996
Report supplied by USDA
HOG MARKET TODAY 693 HEAD; LAST WEDNESDAY 1066; LAST YEAR 20.
BARROWS AND GILTS: STEADY.
US#1-2 220-260 LBS. 55.00-56.50,
US#1-3 220-260 LBS. 54.00-55.25;
190-210 LBS. 50.00-51.50.

Leinbach's Hay

Shippensburg, PA
June 22 and 25
Report Supplied by Auction
28 LOADS.
ALFALFA: \$2.00-166.00.
MIXED HAY: 45.00-112.00.
TIMOTHY: 62.00-102.00.
BROMEGRASS: 78.00-95.00.
ORCHARDGRASS: 75.00-128.00.
STRAW: 46.00.
EAR CORN: 167.00-172.00.
OATS: 2.20-2.35.

North Jersey Hay-Straw & Grain Report

HACKETTSTOWN, NJ
JUNE 25, 1996
*ALFALFA: 4, 2.75, 1.20.
*MIXED: 2, 2.50, 2.10.
*GRASS: 12, 2.10, .25.
*STRAW-WHEAT: 2, 1.00, .50.
*RYE STRAW: 2, 1.00, .70.
SHELLED CORN: 1, 4.75/bag.
*MULCH HAY: 1, .25.
TOTAL: 24.
*Sold by the bale.

Diffenbach Auction Center

New Holland, Pa.
Monday, June 24, 1996
Report Supplied by Auction
TOTAL LOADS: 56.
ALFALFA: 90.00.
MIXED HAY: 50.00-170.00.
TIMOTHY: 42.00-175.00.
ORCHARDGRASS: 30.00-115.00.
STRAW: 70.00-110.00.
EAR CORN: 155.00-172.00.
OATS: 3.25 BU.

Vintage Hay

Paradise, PA
Thurs., June 27, 1996
Report Supplied by Auction
ALFALFA: 71.00.
TIMOTHY: 85.00-122.00.
WHEAT STRAW: 82.00.
NO SALE JULY 4.

Green Dragon Hay

Ephrata, Pa.
Friday, June 21, 1996
Report Supplied by Auction
79 TOTAL LOADS.
MIXED HAY: 22 LOADS, 63.00-237.00.
ALFALFA: 6 LOADS, 70.00-167.00.
TIMOTHY: 12 LOADS, 55.00-207.00.
STRAW: 16 LOADS, 60.00-92.00.
EAR CORN: 16 LOTS, 161.00-183.00.
ORCHARD GRASS: 2 LOADS, 82.00-100.00.
OATS: 3.35-3.60 BU.
CLOVER: 90.00.

Kutztown Produce Auction

Saturday, June 22, 1996
Report Supplied by Auction
TOTAL LOADS: 17.
ALFALFA HAY: 72.00-155.00.
GRASS: 75.00.
MIXED HAY: 72.00-82.00.
WHEAT STRAW: 52.00-60.00.
EAR CORN: 4.90 BAG
On July 6 a mini-consignment auction is to be held immediately following the hay and straw auction.

Kirkwood Hay Auction

Kirkwood, Pa.
Tuesday, June 25, 1996
Report Supplied by Auction
22 LOADS OF HAY.
MIXED HAY: 1ST CUTTING 70.00-134.00.
TIMOTHY: 85.00-115.00.
ALFALFA: 1ST CUTTING 91.00-117.00, 3RD 210.00.
HAYLAGE: 46.00.
GRASS: 86.00-90.00.
WHEAT STRAW: 82.00-92.00.
BARLEY STRAW: 65.00.
RYE STRAW: 69.00.
SALE TIME 11 A.M.

Middleburg Hay

Middleburg, PA
Tues., June 25, 1996
Report supplied by PDA
15 LOADS OF HAY.
ALFALFA: 70.00-120.00.
MIXED HAY: 40.00-147.50.
BROMEGRASS: 110.00.
ORCHARDGRASS: 45.00.
STRAW: 4 LOADS, 60.00.
EAR CORN: 13 LOADS, 148.00-168.00.
BARLEY: 1 LOAD AT 3.35 BU.
OATS: 10 LOADS, 2.35-2.70 BU.

Westminster Hay Sale

ALFALFA: .40-3.10/b.
TIMOTHY: .85-2.60/b.
MIXED: .10-1.70/b, large round 10.00.
GRASS: .10-.45/b.
STRAW: .75-1.80/b.
MULCH: .10-.30/b.

Dewart Hay

Dewart, PA.
Monday, June 24, 1996
Report Supplied by Auction
HAY, 57.00-105.00.

Regional Hay

June 24, 1996
Eastern, Pa.
HAY & STRAW MARKET FOR EASTERN PA - (ALL HAY NO. 2 AND BETTER. PRICES PAID BY DEALERS AT THE FARM & PER TON.) HAY AND STRAW MOSTLY STEADY, OLD CROP LITTLE OFFERED.
NEW ALFALFA 80.00-100.00; MIXED HAY 60.00-95.00 FEW REPORTED 115.00; OLD CROP 85.00-140.00; TIMOTHY 60.00-95.00 FEW REPORTED 115.00; OLD CROP 80.00-140.00; STRAW 40.00-60.00 FEW REPORTED 70.00; MULCH 25.00-40.00.
SUMMARY OF LANCASTER CO. HAY AUCTIONS FOR WEEK ENDING 06/24/96. PRICES PER TON: LOADS: 108 HAY, 41 STRAW & 23 EAR CORN. NEW ALFALFA 80.00-152.00; MIXED HAY 75.00-166.00; TIMOTHY 90.00-170.00; STRAW 60.00-92.00; BAR CORN 167.00-183.00.
SUMMARY OF CENTRAL PA. HAY AUCTIONS FOR WEEK ENDING 06/24/96. PRICES PER TON: LOADS: 60 HAY, 13 STRAW & 29 EAR CORN. NEW ALFALFA 80.00-125.00; MIXED HAY 62.50-115.00; TIMOTHY 70.00-100; STRAW 40.00-90.00; BAR CORN 145.00-175.00.

Good's Hay

Leola, Pa.
Wed., June 26, 1996
Report Supplied by Auction
TOTAL LOADS: 40.
TIMOTHY: 105.00-160.00.
STRAW: 60.00-80.00.
GRASS: 75.00-150.00; ONE LOAD ROUND BALES 38.00.
CORN: 75.00-170.00.
MIXED HAY: 40.00-135.00.
CLOVER: 35.00.
OATS: 3.00 BU.



WALTER M. DUNLAP & SONS
Lancaster Stockyard
1147 Lititz, Pike, Lancaster, PA 717-397-5136

OFFER ALL CATTLE & HOG FEEDERS
TWO MARKETING DAYS

Monday

9 AM: Goats, Slaughter Calves, Sheep/Lamb Small Calves
9:30 AM: Bulls, Heifers, Steers, Cows
1 PM: Hog

No Hog Receiving Wed., July 3

FEEDER CATTLE SALE
3RD WEDNESDAY OF EACH MONTH

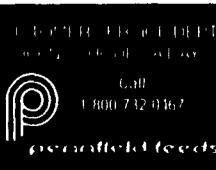
GRADED SOW SALE
2nd & 4th TUESDAY, EACH MONTH
Receiving - 6 A.M. - 11 A.M.

PENNFIELD GRAIN BANK

PENNFIELD HAGERSTOWN MARYLAND
Grain drying and receiving station is now in full operation and ready to receive your Barley.

Prices Week Of 07/01/96
Corn \$5.62 Bu.
Soybeans \$7.43 Bu.
Barley \$3.30 Bu.

- No Storage Charges
 - Prices Updated Weekly
 - Grain Bank Balance Shown On Each Invoice
 - No Hidden Charges
- For every ton of qualifying dairy feed purchased you will receive one ton of grain back hauled at no charge



Lancaster Farming

INDEX
Four Sections

COLUMNS
Now is the Time..... A10
On Being A Farm Wife..... B 3
Farm Women..... B4
Ida's Notebook..... B 4
Family Living Focus..... B 5
All Gardens..... B 9
It's Showtime..... C 8

DEPARTMENTS
Editorial..... A10
Farm Calendar..... A10
Farm Forum..... A10
Futures..... A16
Mailbox Markets..... B20,25
Sale Reports..... B27
Public Auction Register..... B28
Business News..... C 2
Classified Ads..... C 8, D 4

HOME AND YOUTH
Homestead Notes..... B 2
Home On The Range..... B 6
Cook's Question Corner..... B 8
You Ask, You Answer..... B11
Kid's Korner..... B10

FEATURES
Percheron Youth Clinic..... A29
Cooperatives Institute..... A33
Rutter's Dairy..... A38
Asst. Technology Series..... B 2
Sower's Dairy..... B10
Ewe Quads..... B11
Cow Mania- Winners..... B12
Elk Velvet..... C 7

DAIRY
DHIA Newsletter..... B21
Pa. High Protein..... C 6
Top Cows..... D 2
Lanc. Low SCC..... D 3
Lanc. Protein Herds..... D 3