

Simmental Top-Gaining Bull

Dairylea Joins Effort To Help Producer Income

BEDFORD (Bedford Co.) — Shoemaker's Money Maker, consigned by Miller and Shoemaker's Simmentals of Bedford, was the top-gaining bull overall breeds entered into the Pennsylvania's Performance testing program.

He gained 5.12 pounds per day on the test. This is 20 percent above the average gain of his breed.

Miller and Shoemaker had a second bull in the test, Red Hot Jet, who placed fourth out of fifteen bulls. It should be noted that Shoemaker's Dream Jet, also owned by Miller and Shoemaker's Simmentals, captured the grand champion Simmental bull title and went on to capture the supreme champion beef bull title over all other breeds at the 80th Pennsylvania Farm Show in January.



Shown above are, from left to right, Matthew Miller and Bill Shoemaker (breeders), Rich George (purchaser and new owner of Money Maker), and Jerry Wilcox (president of the Pennsylvania Simmental Association).

SYRACUSE, N.Y. — Concerned with the alarming cost/price squeeze that could force thousands of milk producers out of business, Dairylea Cooperative Inc. has joined with the National Milk Producers Federation (NMPF) in requesting specific federal action from the U.S. Department of Agriculture (USDA) to help dairy producers deal with record high grain prices, low beef prices, weather-reduced feed supplies and lackluster dairy produce exports.

In a recent letter to Secretary Glickman, Dairylea President Clyde Rutherford urged the USDA to "take action immediately to alleviate the harmful effects of adverse conditions on the nation's dairy farmers."

Rutherford is also standing behind the recommendations of NMPF's chief executive officer Jim Barr, who is calling for the USDA to:

- Make advance government dairy product purchases for domestic food assistance programs;
- Fully implement 1996 Farm Bill provisions to strengthen the Dairy Export Incentive Program

(DEIP) for U.S. dairy export market development;

- Authorize Food for Progress Program purchases of dairy products for overseas humanitarian aid projects and international market development; and

- Release existing Commodity Credit Corporation (CCC) stocks of feed grains to alleviate regional feed shortages.

"Dairy farmers must write immediately to Secretary Glickman, describing their own personal situation on feed costs, cattle prices and profit margins," said Rutherford. "We must urge the USDA to take the necessary actions to mitigate the present price/cost crunch. Such action will sustain the farm operations of many of the nation's dairy producers, and will allow the dairy industry to move forward during this economically challenging time."

Dairylea is a Syracuse-based, dairy farmer-owned cooperative with more than 2,600 member-farms throughout the Northeast. It markets more than 4.5 billion pounds of milk annually and participates and is invested in a milk marketing network stretching from Maine to Maryland to Ohio.

Dairy Tour To Lebanon, Manheim

LEBANON (Lebanon Co.) — Are you considering changes to your dairy farm? If you answered maybe or yes, then consider attending a tour designed for dairy farmers.

The July 17 tour, sponsored by RISA (Regional Infrastructure for Sustaining Agriculture) and the Penn State Dairy MAP project includes two dairy farms loaded with excellent ideas. The two dairy farms featured are Hershey Brothers Dairy in Manheim and David and Christine Williams Farm in Lebanon. Both farms have high production herds and utilize a variety of management tools and technologies.

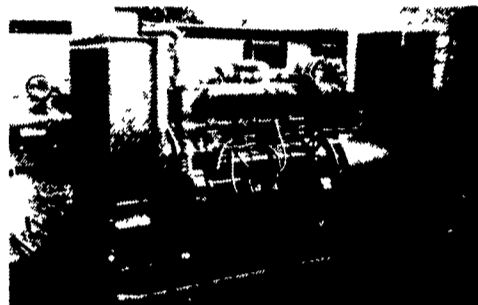
Featured at the Hershey Brothers Dairy will be their 200-cow modern confinement facility built in 1992. Learn from the Hersheys how they manage their operation, including their partnership.

At David and Christine Williams 60-cow farm, you will see

several improvements to their tie stall barn that emphasizes cow comfort. In addition, the Williams' forage system includes management intensive grazing that is supporting a herd average of more than 28,000 pounds of milk with three times a day milking.

To learn how these two farms are putting all the pieces together, you must register by contacting the Lebanon County Extension Office at (717) 270-4391 by July 10. The tour is free and includes a lunch and transportation. However, registration is limited to the first 30 participants. The tour will be held on Wednesday, July 17, and starts at the Lebanon County Ag Center at 9:45 a.m. and ends at 3:15 p.m. The tour is funded by the RISA On-Farm Demonstration Team with support from Penn State Cooperative Extension and the Penn State Dairy MAP Project.

MARTIN MACHINERY



GENERATORS

- Sales ★ Service ★ Rentals
 - ★ Complete Generator Systems
 - ★ PTO ★ Portables ★ 2-1600 KW
- "We Service It If You Have It And Sell It If You Need It"

34 W. Mohler Church Rd.
Ephrata, PA 17522

Tel: 717-738-0300
Fax: 717-738-4329

CUSTOM MADE FEED BINS FOR FARMS — FEED MILLS



- Made of 13 gauge Steel
- All welded seams
- Gravity Flow or Auger

Free Estimates

Also - Steel Roof Trusses for Buildings - Portable Hog Buildings - Bucket Elevators - Grain Augers Distributors - Flow Pipes & Accessories

We Sell, Service & Install
Ph: 717-345-3724
Fax: 717-345-2294

STOLTZFUS WELDING SHOP

Owner - Samuel P. Stoltzfus
RD 3, Box 331
Pine Grove, PA 17963

HAY EQUIPMENT

(1 only) NH 315 Baler (Like New) with new Kohler Engine and gas tank. Battery KNotters checked (excellent condition).....\$5,600

Easy Payment Plan

- 1 NH 456 Mower.....(SOLD)
- 2 402 Crimpers.....(SOLD)
- (1 only) 4 Spinner 14' Tedder, New.....\$2,375
- 1 2 Spinner 8' Tedder.....(SOLD)
- 1 International Trailer Mower.....\$795

SILAGE & HARVESTER EQUIPMENT

- 1 NH 892 Harvester.....\$4,200
- 1 NH 890 Harvester with Table Complete.....\$3,990
- 1 NH 890 Harvester.....\$1,950
- 1 John Deere 35 Harvester.....\$1,375
- 1 Gehl 600 Harvester.....\$1,625
- 1 Gehl 600 Harvester.....\$1,495
- 1 Gehl 750 Harvester.....\$1,800
- 1 Gehl 1200 Harvester.....\$1,700
- 1 John Deere 3800 (looks like new).....\$2,150
- 1 NH 890 Harvester.....\$1,800



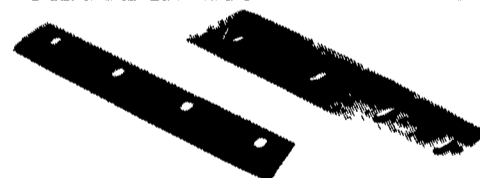
HARVESTER TABLES

For any make Harvesters
NEW...
Custom-made to fit

Beveled Rollers.....keeps belt centered
Safety Lever.....disengages clutch
Quick Attach.....no tools required
Rough-top Belting.....better feed
Stainless Steel Belt Lacers
• Two Coats Rustoleum Paint
Easy-Adjust Conveyor Belt Tension

\$795

FORAGE HARVESTER KNIVES



Check in on our Factory Direct Rockbottom Low Prices on Harvester Knives, Shearbar, and Grindstones

- Gehl 600 Knife.....\$56.00
- John Deere Knife.....\$54.55
- NH 890 Knife.....\$56.35
- NH 892 with Double Edge.....\$73.00

Dealer Inquiries Welcome

We Also Have Used Electronics for Harvesters

TUNNEL VENTILATION FANS

- 48" 5 Paddle 24, 425 CFM Fans.....\$395
- 4 or More.....\$375



DIESELS AND FORKLIFTS

- 1 Large Forklift with 90 hp Diesel Hydrastatic Drive.....\$9,500
- 1 Automatic Forklift with cab & heater, etc. Engine was Completely Overhauled.....\$6,500
- 1 48' Volt Go Cart.....\$525
- 1 75 hp Ford Engine (new) with Clutch, etc.(SOLD)
- 1 4 Cylinder Wisconsin Engine with Reduction.....\$1,650
- 1 33 hp Lombardini Diesel (new).....\$2,450
- 20 hp Achme Diesels (new) Ideal For Tunnel Ventilation.....\$1,450

(1 only) complete Truss Manufacturing Machine with Hyd. Powered Overhead Crane, etc.....\$2,500

Georgetown Hydraulics

343 Christiana Pike
Christiana, Pa. 17509

610-593-2753

Call between 8-9:30 or leave Message

UPS SERVICE AVAILABLE

"We're proud to be part of a financially sound cooperative. Atlantic does its best to get the greatest return from the marketplace."

—Jeff Moore
Centreville, MD



ADC Is the Place To Be

Financial stability and the greatest return from the marketplace — the outstanding benefits that Jeff Moore refers to — are among the strengths of the premier dairy cooperative in the region.

Atlantic Dairy Cooperative has a 78-year history of excellent service to its members. Financially strong, ADC guarantees a market for all member milk and excels in maximizing returns. ADC is a leader in providing equity payments, quality bonuses and over-order premiums to members.

Nearly 4,000 dairy farmers agree that "ADC is the Place to Be."

For free information on how you can secure the future of your dairy farm operation, write or call:

Atlantic Dairy Cooperative
1225 Industrial Highway
Southampton, PA 18966
1-800-645-MILK

