

Pennsylvania Livestock

WAYNESBURG, PA
JUNE 27, 1996

CATTLE:
SLAUGHTER COWS: Utility and commercial 31.00-38.50; Cutter and boning utility 26.00-34.50; Canner and low cutter 20.00-28.50; Shells 20.00 & down.
BULLS: Yield grade 1 1500/2000 lbs, 35.00-44.75; Yield grade 2 1000/1400 lbs, 34.00-42.00.
FEEDER STEERS: M&L 1 300/500 lbs, 40.00-56.00; 250/280 lbs, 35.00-58.00; M 600/900 lbs, 40.00-54.50; HEIFERS: M 1&L 1 300/500 lbs, 35.00-53.00; L 1 400/650 lbs, 38.00-51.50; BULLS: M&L 1 300/620 lbs, 32.00-53.50.
CALVES: Veal: Prime 65.00-75.00; Choice 50.00-61.00; Good 35.00-48.00; Farm Calves: #1 Holstein bulls 90/120 lbs, few 40.00-70.00; #2 Holstein bulls 80/100 lbs, few 20.00-42.00; Beef X bulls & hfrs/hd 35.00-60.00.
HOGS: Barrows & Gilts: #1-2 210/255 lbs, 46.00-55.00; #2-3 255/280 lbs, 45.00-55.00; Sows: #1-3 300/500 lbs, 30.00-38.50; Feeder Pigs: 1-3 25/35 lbs, 10.00-24.00/hd.
LAMBS: High choice 40/100 lbs, 90.00-102.00; Choice 90/105 lbs, 90.00-100.00; Feeder Lambs: Good 75.00-92.00; Sheep 15.00-32.00; Fat sheep 18.00 & down.
GOATS: Large 50.00-85.00/hd; Medium 30.00-50.00/hd; Small 10.00-34.00/hd.
HORSES: Horses 25.50-63.00; Ponies 20.00-44.50.

Greencastle Livestock

GREENCASTLE, PA
JUNE 27, 1996

CATTLE: 143: Cows: 1.50-3.50 higher.
STEERS: Holstein: Select couple, 43.00-47.25; Ind standard at 40.25.
COWS: Breaking utility and commercial 36.00-41.00, few to 44.00; Cutter and boning utility 33.75-38.00; Canner and low cutter 26.50-32.00; Shells down to 21.00.
BULLS: Yield grade 1, couple 1680/1750 lbs, 37.75-38.25; Yield grade 2, ind 850 lbs at 29.00.
FEEDER CATTLE: STEERS: Few L2 steers and bulls, 230/240 lbs, 30.00-31.00.

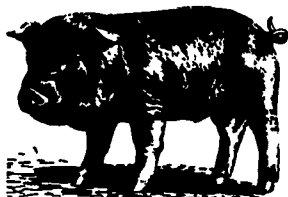
CALVES: 374: Standard and good 75/105 lbs, 26.00-29.00; Utility 55/85 lbs, 16.00-26.00; FARM CALVES: No 1 Holstein bulls 90/125 lbs, 47.50-70.00; No 2 Holstein bulls 85/110 lbs, 28.00-45.00; No 1 Holstein heifers 85/120 lbs, 65.00-95.00; No 2 Holstein heifers 75/100 lbs, 23.00-60.00.
HOGS: 5.
SOWS: Few 1-3 480/585 lbs, 40.00-42.00; BOARS: Ind at 34.00.
SHEEP: 16: Choice 60/120 lbs; Lambs: 76.00-95.00; Slaughter Sheep: Ind at 17.50.
GOATS: 4: Large few, 35.00-56.00; One small kid at 15.00.

Indiana Farmers

HOMER CITY, PA
JUNE 27, 1996

CATTLE: 90: Heifers: Steady to 3.00 lower; Cows: Steady; Bulls: No trend.
STEERS: Few choice 925/1375 lbs, 59.00-64.00; Few select 46.25-54.25.
HEIFERS: Choice 1050/1500 lbs, 58.00-62.00; Select 48.25-62.00; Standard 34.00-34.50.
COWS: Breaking utility and commercial 32.25-38.75; Cutter and boning utility 30.00-34.75; Canner and low cutter 24.00-29.50; Shells down to 16.00.
BULLS: Few yield grade 1 950/1600 lbs, 39.50-41.00; Few yield grade 2 1050/1650 lbs, 36.00-38.00.
FEEDER CATTLE: Few STEERS: L1 435/600 lbs, 50.00-60.00; L2 650/800 lbs, 30.00-35.00; Few HEIFERS: 425/480 lbs, 45.00-50.00; Few BULLS: L1 700 lbs, one at 42.00, L2 375/600 lbs, 25.00-33.00.
CALVES: 86: Good 130/325 lbs, 35.00-53.00; Standard and good 90/113 lbs, 23.00-37.50; Standard and good 75/90 lbs, 15.00-22.00; Utility 10.00-27.50; FARM CALVES: Steady to 5.00 higher; No 1, Holstein bulls 95/120 lbs, 50.00-72.50; No 2 Holstein bulls 85/120 lbs, 20.00-50.00; Few No 1 Holstein heifers 95/110 lbs, 62.50-80.00; Few No 2 Holstein heifers 75/105 lbs, 42.50-52.50; Beef cross bulls and heifers 75/120 lbs, 35.00-77.50.
HOGS: 53: Barrows and gilts steady; 1-3 220/250 lbs, 50.50-54.00; 2-3 260/270 lbs, 46.75-53.00; 1-3 150/200 lbs, 51.50-53.00.

SOWS: 1-3 350/650 lbs, 40.25-42.75; Few BOARS: 300/1085 lbs, 25.00-26.75.
FEEDER PIGS: 10: US 1-3 26 lbs, 10 at 21.00.
SHEEP: 17: Choice 80/110 lbs, 85.00-89.00; 50/70 lbs, 79.00-100.00; Good and choice 50/55 lbs, 52.00-75.00; Slaughter sheep: One at 20.50.
GOATS: 2: Medium 33.00-36.00.



Estimated Daily Livestock Slaughter

Under Federal Inspection
June 26, 1996

	CATTLE	CALVES	HOGS	SHEEP
WEDNESDAY 06/26/96 (EST)	131,000	5,000	305,000	14,000
WEEK AGO (EST)	131,000	7,000	315,000	14,000
YEAR AGO (EST)	129,000	5,000	345,000	17,000
WEEK TO DATE (EST)	384,000	17,000	915,000	39,000
SAME PD LT WK (EST)	396,000	19,000	943,000	40,000
SAME PD LT YR (EST)	389,000	15,000	995,000	49,000

PREVIOUS DAY ESTIMATED TUESDAY, STEER AND HEIFER 102,000, COW AND BULL 29,000.
SOURCE: USDA MARKET NEWS, WASHINGTON, D.C.

Record Exports Help Pork Producers

DENVER, Colo. — Record pork exports in 1995 had a significant impact on American pork producers and allied industries last year, according to a recent study by CF Resources, an independent research firm in Denver, Colo. Export sales of U.S. pork and pork variety meat products, the study reports, were responsible for 8.6 percent of the wholesale value of total U.S. pork production last year — up from 6.1 percent in 1994 and eight times the figure of

just 10 years ago. "We're very pleased with the results of this latest impact study," said U.S. Meat Export President Philip M. Seng. "Once you've looked back at what has been accomplished in recent years, you can't help but get excited about what the future holds for pork exports." The study finds that hog prices in the United States benefit substantially from increased demand for high-quality American pork in foreign markets. Given levels of

production and demand last year in the United States, export sales of U.S. pork added \$11.78 per head to the value of slaughter hogs in 1995. The American pork industry exported a record 365,289 metric tons of pork and pork variety meats in 1995, valued at \$936 million. This is a 500 percent increase in export volume since 1986. The study notes that U.S. pork exports in 1995 were equivalent to 4.26 million hogs. The industry's growth in foreign markets, said Seng, is just the tip of the iceberg. "We see potential for U.S. pork export sales to top a million metric tons in the year 2000."

MILK AMERICA'S HEALTH KICK

BOWMAN'S STOVE & PATIO 19th Anniversary Sale
Now thru July 3rd

10% OFF ALL ACCESSORIES IN STOCK

- Fireplace Tool Sets
- Fireplace Screens
- Solid or Plated Brass
- Trivets
- Cast Iron Kettles
- Hearth Rugs
- And Much, Much More!

30% OFF ALL FIREPLACE DOORS IN STOCK

Featuring:
Schaefer, Stoll and Fireguard, Etc.
(Special orders 10% Off)

40% OFF ALL HALCYON, SAMSONITE & TELESCOPE PATIO FURNITURE IN STOCK.
(40% Off Special Orders, Too)

Stop In And Register To Win A **FREE BARBEQUE GRILL**
(\$699 Value- No Purchase Necessary)

Telescope Casual 5 PIECE DINING SET
FOCUSED ON A WORLD OF LEISURE

- 4 Sling Chairs
- 42" Glass Top Table
- 6 Colors To Choose

Reg. Retail \$820
Sale \$492

7 1/2" Umbrella
Reg. Retail \$308
Sale \$184

All Items Subject To Prior Sale (Some Items May Not Be Exactly As Pictured)

Vermont Castings
Keeping warm never looked so good!

10% OFF ALL* VERMONT CASTINGS STOVES IN STOCK

*Includes: Wood, Coal, & Gas Vermont Castings Stoves.

ALL GRILLS ON SALE! FREE

- Tank
- Gas
- Assembly
- Delivery (Within 15 Miles)

For Example Model 804
Reg. Retail \$399
Sale \$359

HATTARAS HAMMOCKS
• Hand Crafted Quality • Made in the USA

\$83

Model C-11
Hattaras Hammocks provides Endless Pleasure

906 E. Main St. (Rt. 322)
Ephrata • (717) 733-4973
1 Block East of Rt. 222
1-800-642-0310

BOWMAN'S STOVE & PATIO INC.

Shop Early for Best Selection
No Rainchecks No Layaways
Hours: M-T-W 10-6; TH-F 10-8; Sat. 10-4

PAUL B. ZIMMERMAN INC.
Your Complete Headquarters For Sprayers And Parts

Self-Priming Centrifugal Pumps PACER PUMPS

Features:

- Self-priming to 20 feet
- Total heads to 120 feet
- Capabilities to 200 U.S. GPM
- Built in check valve
- Equipped with 1 1/2" or 2" female threaded connections, NPT

Full Line Of Hose And Couplings In Stock!

• 3 H.P. 'S' Series 1 1/2" Or 2" Ports Reg. \$220.00 SPECIAL \$192.50	• 5 H.P. 'S' Series 2" Ports Reg. \$270.00 SPECIAL \$236.25	• 5 H.P. 'S' Series With I/C Briggs Engine 2" Ports Reg. \$370.00 SPECIAL \$323.75	• 5 H.P. 'S' Series With Honda Engine, 2" Ports Reg. \$506.00 SPECIAL \$497.00 With Cage \$497.00
---	---	--	--

• 'S' Series Pedestal Pump Only 1 1/2" or 2" - Reg. \$136.00.....**SPECIAL \$119.00**

Raven Tough Polyethylene Tanks

- SPRAYER TANKS - ALL SIZES For New Or Replacement AVAILABLE FROM
- STATIONARY TANKS For Liquid Fertilizer Storage 25 GAL. to 2500 GAL.

We Also Stock A Complete Line Of:

- Teejet** Sprayer Nozzles And Accessories
- Hyprow** Pumps And Accessories
- PACER PUMPS** • Sprayer Hose • Ball Valves • Nylon Fittings • Poly Tanks

PAUL B. ZIMMERMAN, INC.
50 Woodcomer Rd., Lititz, PA 17543
1 Mile West of Ephrata
(717) 738-7350
• HARDWARE • FARM SUPPLIES • CANINE SERVICE

HOURS: Mon., Thurs., Fri. 7-8:30
Tues., Wed.: 7-5:30
Sat.: 7-4:00