

Philadelphia Fruit Market
PHILADELPHIA
JUNE 26, 1996

CITRUS FRUITS

---GRAPEFRUIT: MARKET STEADY ctns CA Red 27s fr qual 12.00 32s fr qual 12.00 36s fr qual 12.00 40s fr qual 12.00
---LEMONS: MARKET ABOUT STEADY ctns CA 95s 21.00-25.00 fr qual 18.00-19.00 115s 26.00 fr qual 20.00-21.00 mos 20.00 140s 27.00 fr qual 21.00-23.00 mos 21.00 165s 27.00 fr qual 22.00-23.00 200s fr qual 23.00
---LIMES: MARKET LOWER 10 lb ctns MX 42s 4.50-5.00 48s 3.00-4.50 mostly 3.50-4.50 54s 3.00-4.00 mostly 3.00-3.50 some 4.50 63s 3.00-3.50
---MISC CITRUS: OFFERINGS INSUFFICIENT TO QUOTE
---ORANGES: MARKET ABOUT STEADY ctns CA Valencia 56s 19.00 fr qual 12.50-13.00 72s 16.00-18.00 fr qual 12.50-13.00 88s 14.00-15.00 fr qual 12.00 113s 11.00-12.50 4/5 buctns FL Valencia 64s 11.00-12.00 80s 11.00-12.00 100s 10.00-11.00 some 12.00
---TANGELOS: OFFERINGS NONE
---TANGERINES: OFFERINGS NONE
---TEMPLES: OFFERINGS NONE
---BERRIES
---BLUEBERRIES: MARKET AR LOWER, OTHERS ABOUT STEADY. flts 12 1-pt cups with lids AR lge 15.00 NC med-lge 13.00-14.00 med 12.00 NJ med-lge 15.00-16.00 mostly 15.00 med fr appear 10.00-12.00
---CRANBERRIES: OFFERINGS NONE
---MI 1-pt bkts CA med-lge 10.00-12.00 few 9.00 one label 15.00
---MELONS

---CANTALOUPS: MARKET ABOUT STEADY 1/2 ctns/ctns AZ 9s 9.00 12s 10.00-11.00 15s 11.00 18s 12.00 CA 9s 8.00-11.00 12s 10.00-13.00 mostly 12.00-13.00 15s 11.00-13.00 some 14.00 18s 14.00 GA 9s few 9.00-10.00 MX 9s 10.00 12s 12.00 15s 13.00 18s 13.00 TX 18s 12.00-14.00 mostly 13.00
---HONEYDEWS: MARKET ABOUT STEADY 2/3 ctns CA 4s 6.50-7.00 mostly 7.00 5s 7.50-8.00 mostly 8.00 6s 8.00-9.00 mostly 9.00 TX 4s 6.00-7.00 5s 7.00-8.00 mostly 8.00 6s 8.00-8.50 mostly 8.00 8s 8.50-9.00
---MISC MELONS: 2/3 ctns CA Crenshaw 5s 14.00 6s 14.00 Juan Canary 5s 14.00 6s 14.00 Santa Claus 5s 14.00 6s 14.00 Sharlyn 5s 14.00 6s 14.00 Orange Flesh 5s 14.00 6s 14.00 Galia 5s 14.00 6s 14.00
---WATERMELONS: MARKET STEADY ctns per ctn MX Red Seedless 5s 18.00 bins per melon FL Sangria 20-22 lb 3.00 22-24 lb 3.00-3.25 25-28 lb 3.50 GA Sangria 20-22 lb 3.00 22-24 lb 3.25 25-28 lb 3.50 Crimson Sweet 22-24 lb 3.00
---NON-CITRUS FRUITS
---APPLES: MARKET STEADY ctns trypk AG BOAT Granny Smith 70s fr cond 16.00 90s fr cond 16.00 100s fr cond 16.00 NZ BOAT Granny Smith 100s 26.00 CONTROLLED ATMOSPHERE STORAGE ctns trypk NY U.S. ExFey Red Delicious 80s 17.00 88s 17.00 100s 16.00 113s 16.00 WA Fuji 88s us hail grade fr cond 10.00 WAExFey Red Delicious 80s 19.00 88s 19.00 one label 24.00-25.00 fr cond 17.00 100s 18.50 fr cond 16.00 125s 18.50 fr cond 14.00 Golden Delicious 80s one label 28.00-29.00 100s 18.50 one label 26.00 Granny Smith 80s 22.00 138s fr cond 10.00 Braeburns 64s ord cond 6.00 U.S. ExFey Red Delicious 88s 16.00-17.00 Golden Delicious 80s 20.00 88s 20.00

WAFcy Red Delicious 64s 15.00 72s 15.00 80s 15.00 88s 15.00-15.50 100s 15.00-15.50 113s 13.00 U.S. Fey Golden Delicious 80s 17.00 88s 17.00 100s 17.00 ctns calpk VT U.S. One McIntosh 100s 13.00 120s 10.50-11.00 140s 10.50-11.00 ctns 12 3-lb flmbgs WA U.S. ExFey Red Delicious 2 1/4" min fr cond 9.00 Golden Delicious 2 1/4" min 14.00 Granny Smith 2 1/4" min fr cond 10.00
---APRICOTS: 24 lb ctns CA Patterson #10 23.00
---AVOCADOS: MARKET STEADY ctns 2 lyr CA Hass 48s 30.00-32.00 ctns loose 48 sz 30.00
---BANANAS: MARKET STEADY 40 lb ctns IMPORT 13.00 fair qual 10.00-12.00 small 8.50-10.00 40 lb ctns bagged IMPORT 13.00 ctns institutgaal pk IMPORT petite 13.00
---CHERRIES: MARKET LOWER 20 lb ctns WA WAOne Bing 11 1/2 row sz & lgr 26.00 12 row sz & lgr 25.00-30.00 mostly 25.00-28.00 some 23.00
---FRUITS OTHER: flts 1 lyr CA Figs Black Mission 40s 9.00-10.00 48s 9.00-10.00 flts 1/2 tray 24s fr cond 3.00-4.00 ctns 12 1-pt bkts CA Figs Black Mission 14.00-16.00 mostly 14.00-15.00
---GRAPES: MARKET ABOUT STEADY 20 lb lugs CA Thompson Seedless med-lge 18.00 Black Seedless med-lge 22.00 MX Black Seedless med-lge 24.00 18 lb lugs bgd CA Perlette med 15.00 Thompson Seedless med-lge 15.00-20.00 few 14.00 fr cond 10.00 Flame Seedless med-lge 17.00-18.00 mostly 18.00 MX Perlette sml 10.00 med 15.00-16.00 fr cond 12.00 Thompson Seedless med-lge 19.00-20.00 med 16.00 very sml 12.00 Flame Seedless med-lge 17.50-22.00 mostly 18.00 some 16.00-17.00 one lot 14.00-15.00 White Seedless Type med-lge 15.00-18.00 med 12.00-14.00

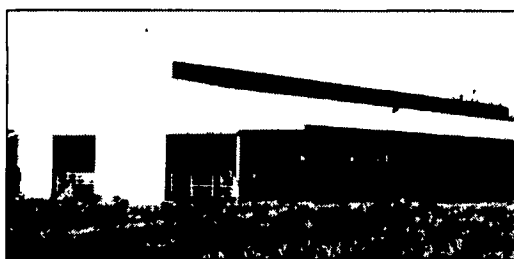
---KIWIFRUIT: MARKET STEADY flts 1 lyr CL BOAT 30s 7.00 33s 7.00 36s 7.00 ctns 22 lb lse CL BOAT 39 sz 10.00 42 sz ord cond 6.00
---MANGOES: MARKET ABOUT STEADY flts 1 lyr MX Haden 12s 4.00-5.00 mostly 4.50 14s 4.00-5.00 mostly 4.50 fr cond 3.50 Kent 12s fr cond 3.50-4.50 Tommy Atkins 8s 5.50 9s 4.00-5.00 12s 4.00-5.00 mostly 4.50 14s 4.00-5.00 mostly 4.00-4.50
---NECTARINES: MARKET ABOUT STEADY 25 lb ctns lse CA California Well Matured Firebrite 70 series 15.00 springbrite 60 series 17.00-18.00 72 sz 14.00-15.00 mos 15.00 80 sz 12.00 May Diamond 80 series 13.00 56 sz 20.00-21.00 64 sz 18.00-19.00 72 sz 15.00 Red Delight 72 sz 14.00 80 sz 13.00 Spring Red 72 sz 14.00-15.00 84 sz 12.00-13.00
---PAPAYA: 10 lb ctns HI AIR 9s fr cond 8.00 10s fr cond 8.00 11s fr cond 8.00
---PEACHES: MARKET SC SLIGHTLY LOWER, CA ABOUT STEADY. ctns 1 lyr trypk CA California Well Matured Various White Flesh Varieties 30s 16.00 ctns 2 lyr trypk CA California Well Matured Amber Crest 42s 19.00 48s 18.00 56s 17.00 Flavorcrest 34s 16.00-18.00 48-50s 13.00-14.00 25 lb ctns lse CA California Well Matured Amber Crest 72 sz 15.00-16.00 Flavorcrest 64 sz 16.00-17.00 mostly 16.00 72 sz 14.00 June Lady 60 series 15.00-16.00 Rich Lady 64 sz 17.00 80 sz 13.00 SC U.S. ExOne Garnet Beauty 2 3/4" min 22.00 2 1/2" min 20.00 2 1/4" min 18.00
---PEARS: MARKET STEADY 4/5 buctns wrpd WA U.S. One D'Anjou 90s 24.00 100s 23.00-24.00 40 lb ctns/boxes AG BOAT Bartlett 70s 18.00 80s 18.00 90s 18.00 100s 18.00 110s 18.00 120s

18.00 CL BOAT Bartlett 120s 16.00 Bosc 100s fr cond 14.00-16.00 28 lb ctns SF BOAT Packham Triumph 70s 16.00
---PERSIMMONS: OFFERINGS INSUFFICIENT TO QUOTE
---PINEAPPLES: MARKET STEADY ctns 1 lyr HI AIR 6s 11.50-12.00 ctns 2 lyr CR 7s 12.00 12s 13.00 EC 8s 12.50 12s 12.50 14s 12.50
---PLANTAINS: 50 lb ctns CB 14.00
---PLUMS: MARKET SLIGHTLY LOWER 28 lb ctns lse CA California Well Matured Black Amber 35 sz 25.00-30.00 mostly 26.00-27.00 80 sz 13.00-15.00 some 12.00 Black Beaut 45 sz 18.00 50 sz 18.00 few hgr 60 sz 18.00-20.00 few 17.00 80 sz 16.00 Santa Rosa 90 sz 13.00-14.00
---POMEGRANATES: OFFERINGS NONE
---PRUNES: J1%9MNONE

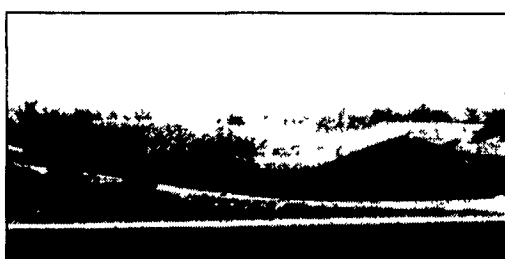
The Windmill Produce Auction

Penn Yan, N.Y.
Friday, June 21, 1996
Report Supplied by Auction
BANANAS: 8.50-9.00 40-LB. BOX
SCALLONS: 30-40 PER BUNCH.
LETTUCE: 35-40 PER HEAD.
CANTALOUPS: 1.25-1.75 EACH.
HULL PEAS: 11.00-15.00 1/4 BU.
CHINESE PEAS: 8.50 1/4 BU.
SUGAR SNAP PEAS: 4.50-10.00 1/4 BU.
STRAWBERRIES: 1.50-1.75 QT.
BEET GREENS: .55 BUNCH.
FLOWERS/FLATS: 1.00-4.50.
VEGETABLE PLANTS/FLATS: 50-3.00.
HANGING BASKETS: 3.00-5.00
PRODUCE AUCTION EVERY WED. AND FRI. 10 A.M.

HAVE IT KNISELY BUILT..
when it comes to dairy facilities talk with us



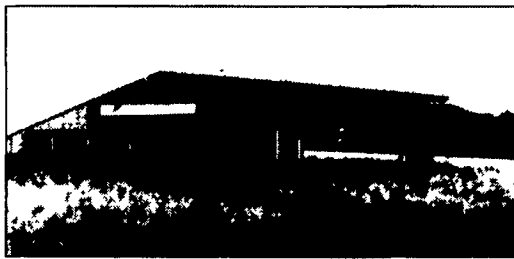
Bruce & Grace Olsen, Montgomery, NY - 60'x168' Open Front Freestall Barn with 3 Rows.



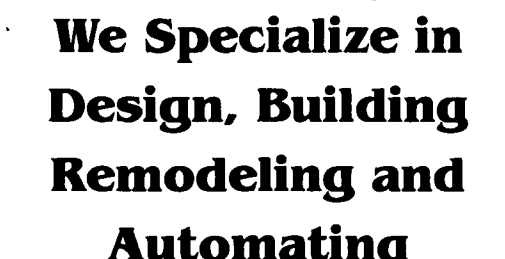
Oak Bluff Farms, Glen Eaves and Family, Woodsboro, Md. 106x552 6 Row Freestall Barn, Snow Damage Repair



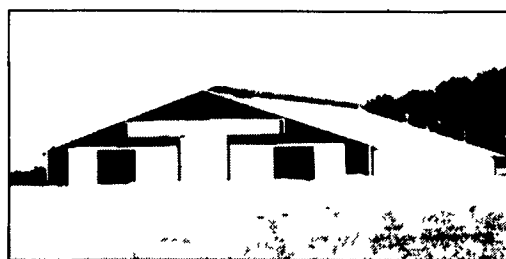
Leroy Dreibelbis and Family, Pennsylvania Furnace, Pa. 144 Cow Drive Thru Freestall Barn



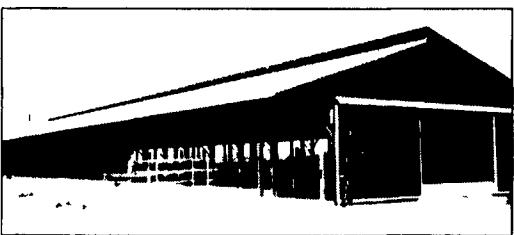
Tom Craig, Bellefonte, PA - 108'x196' Free Stall Barn - 270 Cow Capacity



We Specialize in Design, Building Remodeling and Automating Dairy Facilities



Hillcrest Saylor's Dairy Farms, Rockwood, Pa. 200 Cow Freestall Barn



Statler Farms, Chambersburg, PA - 53'x180'x12' 3 Row Freestall Barn - 100 Cow Capacity



Ronald E. Statler and Family Greencastle, Pa. 6 Row Drive Thru



Mr. and Mrs. Mike Stoltzfus, Clearville, Pa. Tie Stall Barn Addition.

— We Are Builders/Equipment Dealers —

- We offer total systems design with parlor automation a specialty.
- We build complete facilities and offer many years of experience.
- We also do repairs and remodeling, offering plumbing and electrical services.

- We are dealers for the following equipment:
 - Germania Parlor Automation Equipment
 - Norbco Barn Equipment, Alley Scrapers, Parlor Stalls & Curtain Systems
 - Chore Time Feed Bins and Delivery Systems
 - Cow Mattress & Shredded Tire Fill



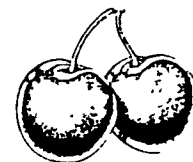
We salute and thank our many fine dairy farm customers...
We appreciate your business.

Knisely BUILT
AGRICULTURAL CONSTRUCTION

Bill Knisely
814-692-4110

14 Cedar Ridge Drive
Port Matilda, PA 16870

Arnold Decker
717-369-3607



TUNNEL VENTILATION
• Custom Design Systems at No Additional Cost.
• High Quality J&D Fans and Controls
717-653-0385

LONG DISTANCE PHONE SERVICE
ONLY 7 cents/minute within USA
Business & resident use
No sign up costs
No minimum usage
Tel-Com Phone Service
Lebanon Pa
Call 1-800-779-7729
Sales People Wanted