

Industrial Paint Liquidation

Just received thousands of gallons of highest quality industrial grade paint from military base closing and canceled government contracts. These paints were designed for extreme duty in military service making them far exceed typical application in commercial or farm use. Buy now while available-most can be stored for several years.

You can't buy better paint!

Epoxy - \$14/gal.
 Polyurethane - \$12/gal
 Alkyd Enamel - \$10/gal
 Specialty Coatings \$10-\$14/gal
 \$40 to \$60 value.

Call for color availability. 10 gallon min. purchase.
 2 locations - Lancaster and Bridgeport, PA
 Heritage Equipment, Inc
 610-942-4116

4 BUILDINGS AND SUPPLIES

WESTERN WOOD PRODUCTS, INC.
 White Pine Sales
 All Dimensions, Patterns, T&G, Edge & Center Bead

CONTACT
GARY SCHOENLY
 Birdsboro, PA
 610-689-5230 • 800-476-3122

Old Barns, Log Cabins, Warehouses and Factories Wanted for Salvage and Removal.

15 years building experience
 K-Wood and Logs, Inc.
 717-993-9037

John Koser's

FOR YOUR HOME IMPROVEMENT NEEDS

LOCATED NORTH OF ELIZABETHTOWN
 OPEN MON.-FRI. 8 TO 6; SAT. 8 TO 3

- Kitchen Cabinets
- Plywood & Waferboard
- Asphalt Roofing Shingles
- T-1-11 Siding
- GP Insulation
- Railroad Ties
- Shutters
- Replacement Windows
- GP Vinyl Siding

Railroad Ties

7" x 9" x 8 1/2'
 #2 - \$6.00
 #1 - \$9.00

717-367-0283

KING CONSTRUCTION CO.

Custom Design and Construction of:

- Pole Barns • Dairy Barns
- Heifer Facilities • Horse Barns
- Equipment Sheds Etc.

601 Overly Grove Rd., New Holland, PA 17557

717-354-4740

Phil Van Lieu Home: 717-259-9077

FLOORING??

4"-12" Wide Plank PA, Hardwoods Starting at \$2.60 Sq. Ft., 3/4" Thick, Y&G Kiln Dried Cyprus decking 1"x6"x12'

"Golden Oak" Ash Oak Barn Flooring?
 Oak, Maple 1 1/2"x8"x8'-16"
 Hickory, Also custom made floors
 Walnut, Others and moldings

BEST PRICES IN AREA!

800-560-8020

JIM GLENDENING & SONS
 610-565-6038
 AVONDALE, CHESTER CO., PA

★ ALLWOOD STRUCTURES ★ POLE BUILDINGS

| STANDARD BUILDINGS | | LOFT BUILDINGS | |
|--------------------|----------|----------------|----------|
| 24x32x8 | \$4,800 | 24x32x8 | \$9,550 |
| 24x40x8 | \$6,000 | 24x40x8 | \$11,100 |
| 30x40x8 | \$7,500 | 30x40x8 | \$13,800 |
| 32x64x10 | \$11,800 | 32x64x8 | \$19,100 |
| 40x80x12 | \$17,900 | | |

ERECTED PRICES (includes slider and service door)
 We specialize in: Horse Barns, Riding Arenas, Garages, Machine Sheds or Custom Built To Your Specifications
 CALL FOR FREE ESTIMATE AND BROCHURE
 1-800-247-0241

SPRING BLOW OUT! STEEL BUILDINGS UP TO 40% OFF!!!



SUPER HEAVY STEEL
 25 X 30 (2 left) 40 X 50 (1 left) 50 X 100 (1 left)
 30 X 40 (3 left) 42 X 64 (2 left)

-20 YEAR WARRANTY- ROCK BOTTOM PRICES!!

American Steel Arch, Inc.
 1-800-942-1234
 Factory Direct

DROP SHIP SPECIAL DIRECT FROM THE MANUFACTURER

(Serious Inquiries Only)



BOSS IN TRAINING: Boss, what are you doing? How can we sell at these prices?

BOSS: "We cut out the middle man and sell direct. Why should people pay high prices? (Many sizes & Models Available)"

223 WARNER RD. • COLUMBUS, NJ 08022
 • 609-702-0550 • FAX 609-702-0440

#3 pine boards, 1"x12"x10-15', \$2.25/each. Must take 25 or more. 717/764-8337

Antique building materials, beams, wide pine boards, flooring, doors, etc. 717/249-2304

AUCTION Monthly sales of building materials, equipment, supplies Baltimore, MD. To buy or sell Please Call 717-235-7706

BARN FLOORING. new, kiln dried, T&G Y-pine 2x8's for floors and stalls, also plain 2x8's 2x6's 2x4's Noah Shirk Sawmill, 717/354-0192.

B grade glassboard and fastening accessories. Glenn Beidler, Freeburg, Snyder Co., PA, (717)539-8993

Brick-Tile paver bricks, 1/2" thickness New, in stock. Lancaster Co., (610)593-1172

"Brute Steel Arch" building system, 40'x41', brand new w/storage box Best offer 410-398-2992

Building. Wooden octagon shaped 44' diameter 25' high horse barn, make offer. 717/838-6689.

CECO... KIRBY.. ALLIED... Steel buildings and components. Retrofit steel re-roofing. Commerce, Industry, Ag. Supply or supply erect. Standard or custom. Complete or addition. Certified permit drawings. Building YOUR business is OUR business. A.S. HOOVER, INC. 3125 Manor Rd, Coatesville, PA 19320. 610-942-2591; 717-445-4962; 1-800-942-2591.

Smucker Construction

139 Churchtown Rd., Narvon, PA 17555 (717) 768-8606
 (717) 768-3264 FAX



72 x 180 Indoor Arena with 20 Stall Barn

Whether your need may be a small barn or a large equestrian center, give us a call and let our experience work for you



48 x 72 Bank Barn



30 x 40 4- Stall Barn

It Pays To Use MSR Lumber

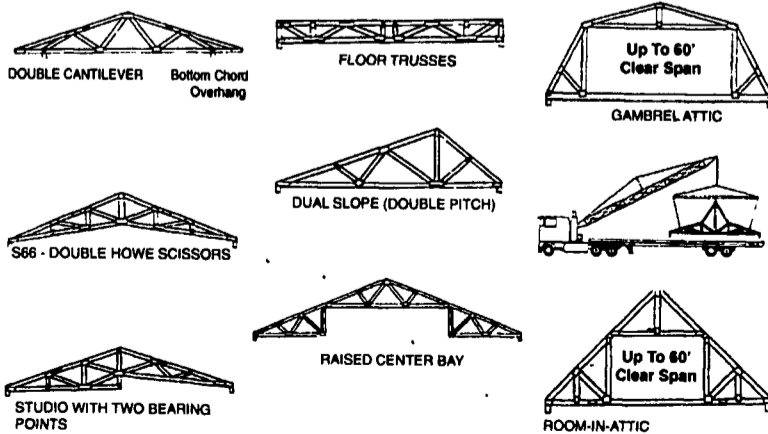
MACHINE STRESS RATED
 LMA5 SPS 2 S Dry
 2250 f 1.9E



BLACK BEAR TRUSS CORP.

"OUR TRUSSES BEAR UP"

On Site In One Week
 Thanks To Exclusive Laser Layout



UP TO 60' CLEAR SPAN
 HORSE BARN • RIDING ARENAS • COMMERCIAL & RESIDENTIAL



HOURS
 Monday-Friday
 7 AM to 6 PM
 Saturday By Appt.

FOR A FREE QUOTE
 Call (717) 998-2391 or
 1-800-326-9689 or
 Fax (717) 998-9875