

**Public Auction Register**

Closing Date Monday 5:00 P.M.  
of each week's publication

SAT. SEPT. 7 - 10AM Tractor, farm equip, & trucks. 1-83 exit 1-Rt. 851 west to New Freedom, pa. cont. Rt. 851 west 4.8 miles, right on Hildebrand Rd. or from

Sticks, Rt. 851 E. 2.6 miles, left on Hildebrand Rd. 1.2 miles, right on Birthday Club Rd-1st farm on right. Mr. & Mrs. Clark Thomas, sellers. Mariette E. Thomas, auct.

SAT. SEPT. 7 - 10AM Heifer Sale. New Holland Sales Stables, Inc. 101 W. Fulton St., New Holland, PA.

MON. SEPT. 9 approx 39 acre limestone farm, E Farmersville rd, Ephrata, Pa. Sale by Christian Z. Zimmerman Est. Conducted by Aaron E. Martin Auction Service.

TUES. SEPT. 10 - 5:30PM Art Pottery & art glass auction. Murry Auction Emporium, 23 N. Water St., Litz, Pa. E.M. Murry Assoc.

**Aucts.**

FRI. SEPT. 13 - 1:30PM State Graded Feeder Pig Sales. Carlisle Livestock Market, Inc.

FRI. SEPT. 13 - 7PM Dairy Sale. Rt. 522 3 Mi. East of Middleburg, PA. 5 Mi. West of Selinsgrove, PA. Middleburg Livestock Auction Sales, Inc.

MON. SEPT. 16 - 5:30PM 200+ pcs. antique furniture & clocks. Murry Auction Emporium, 23 N. Water St., Litz, Pa. E.M. Murry Assoc., aucts.

TUES. SEPT. 17 - 9:30AM Antiques - all Day. Murry Auction Emporium, 23 N. Water St., Litz, Pa. E.M. Murry Assoc., aucts.

**Dairy and Livestock Sales**

TUES. SEPT. 17 - 2PM 67A Steer & hog farm, 5 a. tillable lot. Loc 776 Glenwood Dr., Ephrata (Hahns-town), By Allen H. Brubaker. Nevin Martin & Son, aucts.

TUES. SEPT. 17 - 7:45PM Feeder Cattle Sales. Carlisle Livestock Market, Inc.

WED. SEPT. 18 & THURS. SEPT. 19 - 8:30AM Monthly 2-Day Sale of Farm Equipment. Located 6 Mi. South of Chambersburg, PA, 1 Mi. East of Marion, Just East of Marion, Just East off Rt. 81 at Marion Exit 4 Along Rt. 914. Marion Auction Service.

FRI. SEPT. 19 - 9AM Equipment Sale. Rt. 522 3 Mi. East of Middleburg, PA., 5 Mi. West of Selinsgrove, PA. Middleburg Livestock Auction Sales, Inc.

FRI. SEPT. 20 - Morrisville Autumn Review Sale - Morrisonville, NY. The Cattle Exchange.

FRI. SEPT. 20 - 7PM Horse Sale. New Holland Sales Stables, Inc. 101 W. Fulton St., New Holland, PA.

FRI. SEPT. 20 - 7PM Feeder Sale. Rt. 522 3 Mi. East of Middleburg, PA., 5 Mi. West of Selinsgrove, PA. Middleburg Livestock Auction Sales, Inc.

SAT. SEPT. 21 - Gates-Acres Holstein Dispersal-Jack & Vicki King to be held at the Ben K. Stoltzfus Farm, Intercourse, Pa. The Cattle Exchange.

WED. SEPT. 25 - Medovue Holsteins Dispersal, 140 Head Unadilla Forks, NY. James Gates & Family.

**The Cattle Exchange.**

THURS. SEPT. 26 - 1PM 129 acre farm, 1436 Mt. Joy, Manheim. Richard S. & Nettie A. Wenger, owners. Kline, Kreider, Good, aucts.

FRI. SEPT. 27 - Medovue Holsteins Dispersal. Owners Jack & Vicki King. Held at Ben K. Stoltzfus Farm, Intercourse, Pa.

FRI. SEPT. 27 - 1:30PM State Graded Feeder Pig Sales, Carlisle Livestock Market, Inc.

FRI. SEPT. 27 - 6PM Feeder Sale. New Holland Sales Stables, Inc. 101 W. Fulton St., New Holland, PA.

SAT. SEPT. 28 - The Grande Dames OF Shade-E-Lane Sale - Topsham, VT. Hosted by Steve Smith & Chet Crosby, Jr. The Cattle Exchange.

SAT. SEPT. 28 - 8:30AM Tack 11AM Horses. Rt. 522 3 Mi. East of Middleburg, PA., 5 Mi. West of Selinsgrove, PA. Middleburg Livestock Auction Sales, Inc.

SAT. SEPT. 28 - 9AM Annual Fall consignment auction of quilts, building material & buggies at the Gordonville Fire Hall, Local Aucts.

**OCTOBER**

TUES. OCT. 1 - 7:45PM Feeder Cattle Sales. Carlisle Livestock Market, Inc.

FRI. OCT. 4 - 7PM Graded Feeder Sale. Rt. 522 3 Mi. East of Middleburg, PA., 5 Mi. West of Selinsgrove, PA. Middleburg Livestock Auction Sales, Inc.

SAT. OCT. 5 - Horse Sale,

Mel's Stables. Sale Held at Wallace Rd. Directions: From Rt. 23 in New Holland, Go South on Brimmer Ave., Go 2 Mi. South on New Holland Road to Hill Rd. Turn Left on Hill Rd. Proceed 1.2 Mi. to Sale on the Left, From Rt. 340 E. of Intercourse Take New Holland Rd., 2.5 Mi. to Hill Rd., Right on Hill Rd. to Sale on Left.

SAT. OCT. 5 - 5:30PM Horse & Tack Sale. Carlisle Livestock Market, Inc.

SAT. OCT. 5 - 10AM Heifer Sale. New Holland Sales Stables, Inc. 101 W. Fulton St., New Holland, PA.

FRI. OCT. 11 - 1:30PM State Graded Feeder Pig Sales. Carlisle Livestock Market, Inc.

FRI. OCT. 11 - 6PM Feeder Sale. New Holland Sales Stables, Inc. 101 W. Fulton St., New Holland, PA.

FRI. OCT. 11 - 7PM Dairy Sale. Rt. 522 3 Mi. East of Middleburg, PA., 5 Mi. West of Selinsgrove, PA. Middleburg Livestock Auction Sales, Inc.

SAT. OCT. 12 - International Excellence-Hosted by Pen-Col Farm to be held at Camp Victory, Millville, Pa. The Cattle Exchange.

TUES. OCT. 15 - 7:45PM Feeder Cattle Sales. Carlisle Livestock Market, Inc.

WED. OCT. 16 & THURS. 17 - 8:30AM Monthly 2-Day Sale of Farm Equipment. Located 6 Mi. South of Chambersburg, PA, 1 Mi. East of Marion, Just East off Rt. 81 at Marion Exit 4 Along Rt. 914. Marion Auction Service.

**HORSE CONSIGNMENT SALE**

Penns Valley Livestock Centre Hall, PA

**June 28 (Friday)**

Tack 6:00 p.m.

Riding Horses 7:00 p.m.

with Buggy & Work Horses Following Kitchen Open & Bar-B-Que Chicken

814-349-5099 or 814-349-8760

Auctioneer Mel Hoover AU003111L

Horses Consigned By:

Louis Peachey

Elam Stoltzfus

M. L. Bowersox

Bert Beachey

**PUBLIC AUCTION**

OLD GRIST MILL

3 FAMILY HOUSE

5.6 ACRES

MILL EQUIPMENT & TOOLS

THUR. JUNE 27 6:00 P.M.

STEWARTSVILLE, N.J.

Auction on site: corner of Rt. 57 & Lows Hollow Rd. Parcel 1: 10,000 sq. ft. mill with office & showroom, business zoned. Parcel 2: 3 family house, \$21,216 income & 28 x30 steel clearspan bldg. with 1/2 bath; Parcel 3: 56 wooded acres with stream. Buy parcels singly or as package. Buyer must have deposit of \$5,000 Cash, cashier check or bank letter of credit. A 10% buyer's premium will be added to the final bid and be included in the total contract price. Broker participation invited. Equipment: Original millstones; Antique scales; cash registers; wooden grain chutes, Triumph corn sheller with cob hower & 101 HP motor, corn grader-never used, Monarch corn cracker & grader with 2 HP motor, hand bag sewer, wooden grain elevator, wooden pulley, wooden sled, ladder, platform scales, bag & barrel carts, oak desk, cistern pump antique moisture lester, 15' conveyor, oil tank pump, molasses pump with 3 phase motor, electric motors, 14" 40 HP hammermill with crusher, Stoltzfus 1 mc & fertilizer spreader-10 ton body with full roof, 27' beams, hydraulic motor drive-excellent condition, 19' pit auger with 12' hopper, antique tools and more. Payment in full at sale.

Preview: Three Sundays 1 to 3 June 9, 16, 23.

CALL for information

MAX SPANN AUCTION CO.

908-735-8866

**Green Dragon Livestock Sales**



Located 1 Mi. N. On North State St., Ephrata

**Sale Every Friday**

11:00 A.M. Beef

7:00 P.M. Small Animal Sale

200-300 Stocker & Feeders Every Friday Regular Shippers Of Northern Cattle

Walter H. Risser, Prop.

Home 717-838-4318

Sale Phone 717-733-2444

**Canadian Holsteins**

We sell complete herds (Reg. or Grade) privately or by auction. Check with us as to what we have available and for sale dates at our arena.

(5) 40-50 Reg. & Grade Herds For Sale

**Brubacher Sales Ltd.**

R.R. #7, Guelph, Ontario, N1H 6J4

(519) 822-3147

(519) 824-0796 or (519) 654-7833

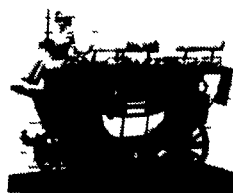
**\*IT'S BACK TO THE NEW HOLLAND AREA\***

**Larry Martin's 1st annual Carriage, Sleigh & Antique Auction**

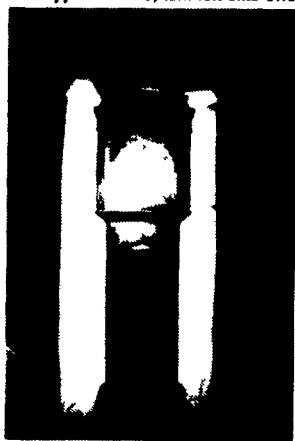
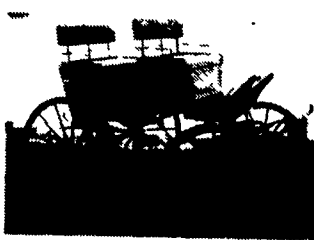
FRIDAY & SATURDAY, JUNE 28 & 29, 1996 SALE AT 9:00 A.M. ON BOTH DAYS

Located: ORLON ROAD, NEW HOLLAND, PA

DIRECTIONS: From Rt. 23, West Main St. New Holland, turn south on Diller Ave. (at Getty Uni-Mart) proceed approx. 1 mile, turn left onto Orton Road (at Sindall Trucking), sale site is on the right.



Miniature Park Drag, original condition, formerly housed at Kauffmann's harness store, N.Y.C.



One of two fine grandfather clocks

**ANTIQUES, COLLECTIBLES, AND HOUSEHOLD GOODS.**

NEW HOLLAND AND LOCAL EPHEMERA (to be sold on Friday at 11:00 am)

Selling from the estate of RAY MARTIN, NEW HOLLAND, PA AND OTHERS.

Two Grandfather clocks, walnut slant top desk, oak table, 1820 PA drysink, oak rockers, dressers, Seth Thomas clock, Queen Anne Chairs, pine drop-leaf table, butter churns, 30 gal. milk can, trunks, copper pots and kettles, wooden butter bowl, wooden drying rack, wire rim glasses, iron lion bank, sheet music, nippon, celluloid doll, toys, marbles, misc. prints and frames, toy cowboy guitar, paper rabbits, Japanese wind-up bear and elephant, travel maps, blue transfer plates, crocks, tin, tin wind-up horse (Occupied Japan), cracked ice glassware, carnival glass, Wolverine tin toy ship, candle stands, planters, tin sand pail, lots of misc. glassware, decorated china, GRY magazines (1930's). LOTS OF NEW HOLLAND AND LOCAL EPHEMERA INCLUDING: local history books, local genealogy books, Sperry N.N. catalogs, HISTORY OF NEW HOLLAND BOOKS BY MOLLAND WEAVER, Lots and lots of paper goods.

AUCTIONEER'S NOTE: This is a very limited listing. These are in storage and most of the boxes were not even reached!! Many more items are still being consigned.

**Carriages, Sleighs, and Horse related items.**

FRIDAY - Large field sale, 3 auctioneers, all day. Miscellaneous horse items under tent. Grandfather Clocks along with Antiques from the home of Mr. Ray Martin, New Holland; Walnut Slant Top Desk, old show cases, A large consignment from Mr. Ray Hartenstine, who is retiring from the horse business due to health reasons. 4-up Smucker Deluxe Show Harness black/brass with scotch hoseings & show collars. 1 set of Pair Harness that matches the 4-in-hand harness. Accessories for Tandem Harness, extra draft Show Collars, misc. harness & parts, assortment of bits, antique stable brackets, 2-McClellan army saddles; Wood and Cast Blanket Rack made by Fiske & Co.; Steer horn 8' sprand; Conestoga Wagon Saddle; rebuilt Dump Cart Harness; set of Coaching Leader Bars; Driving lines for 8-up & 3-abroad. Trailer lead last original B.T. Crump #270 & #280 Fine Harness, Carousons, Births, Harness parts, Brow Bands, Reins, Bridles, Fine Harness Saddles, Cruppers. Remaining inventory from Allison Tack Shop, Mt. Alto, PA, Hydraulic Clicker, Gold Stamp Machine, Western Cut Out Machine, Original Randall Stitcher Stands, Lots of Buckles, Hardware, Tools, a collection of 100 buggy, wagon and carriage jacks, anvils, poles, shafts, ox yokes, BREWSTER RUNNING GEAR, large consignment from SMUCKER'S HARNESS SHOP; also wheels and sleighs from Canada; Kingstons gooteneck 4-horse head-to-head trailer, and lots more.

SATURDAY - OVER 100 CARRIAGES CATALOGUED - Silver & Brass Coaching Horn, Browster Rein Clip, Boot Scraper with Horses on each side, Lamp Brackets, 1 Pr. of Lamps by Flandran & Co., 1 Pr. of Lamps by Henry Hooker & Co., Several other pr. of Coach Lamps; Straw Road Coach Collar, Coaching & Other Fine Prints, Very Fine Leather Hat Box, Sleigh Robes, Several Top Hats, Holly Whips, Many More Fine Coaching Appointments. 10 Dog, Goat and Miniature Carriages, several new Competitor Carriages, Roof Seat Break, Wagonette, Square Wicker Sleigh, Runabouts, Surrey's, new Meadowbrook Carts, Sleighs, Hitch Wagon used in Boyertown, PA as a furniture delivery wagon, pole and shafts; This only a partial listing many items being consigned daily.

Catalogues available at a cost of \$15.00 U.S. or \$20.00 Canadian.

Larry L. Martin, Auctioneer

R.O. BOX 75, NEW HOLLAND, PA 17557 PA-AU-000578-L

Terms: CASH, CERTIFIED CHECKS

(U.S. Funds only), CASH, MONEY ORDER



**Complete Milking Herd and Heifer Dispersal**

for Vernon and Charles Potts, Millington MD, Kent Co.

Thursday, June 27, 1996 - 7:30 p.m.

At Smoketown Quality Dairy Sales, Smoketown PA, Rt. 340

Vernon and Charles have been dairymen for 40 years. All Home raised. Avg. Age 47 months. Cows are out of Sire Power A.I. The foundation of this herd started with Elevation - Lucky - Jet Stream - Mountain. Service sire was a bull out of 27,000 lb. DAM cows fresh April and May. Milking 70 to 80 lb with potential to milk 80 to 100 lb. 3.5t. to 3.7t. Herd Avg. 16,000 to 17,000 m. on 16% dairy feed. 9 Dry cows due Sept. Oct. Dec. 3 due within 2 mo. Good uddered Herd. 1 springing Heifer, 1 Short Bred - 2 open heifers.

**Extra Special**

- 1 load of fancy reg.+ grades fresh and springing cows and heifers out of Susquehanna Co.
- 2 yr old - counselor fresh 15d. 63lb.  
Dam's 4 yr. record 24,800m 3.8
- 3 yr old Melwood Fresh 18d. 91 lb. 2 yr. record 18,100 - 4.2 -  
Dams - 6 yr. 28,500 - 4.2
- 3 yr. old - Lindy Fresh 19d. 88lbs - 2 yr - 17,100 - 3.8.  
Dam - 5 yr. 25,400 - 3.8
- 3 yr. old - Mascot - Fresh 21d. 86 lb - 2 yr - 19,100 - 3.6  
Dam 6 yr. 25, 100 - 3.9
- 2 yr old Jackpot Fresh 12D. 62lb -  
Dam - 4 yr. 23,800 - 3.9
- 3 yr old - Chairman Fresh 18d. 89lb - 2 yr. 18,800 - 3.8.  
Dam yr. 28,100 - 3.8
- 3 yr old Blackstar Fresh 19d. 90lb - 2 yr. 19,200 4.1.  
Dam 6 yr. 28,500 - 4.2
- 2 yr old - Gemini fresh 15d. 64lb -  
Dam 4 yr. 24,100 - 3.8
- 2 yr old Southwind Fresh 62lb -  
Dam 5 yr. 26,400 3.8

Top fresh cows with fancy udders - All A.I. Breeding.

These cows show a lot of milk  
June is Dairy month - Ice cream treat

Sale Managed By  
**SMOKETOWN QUALITY DAIRY SALES**

Gordon & Helen Fritz

717 393 0930