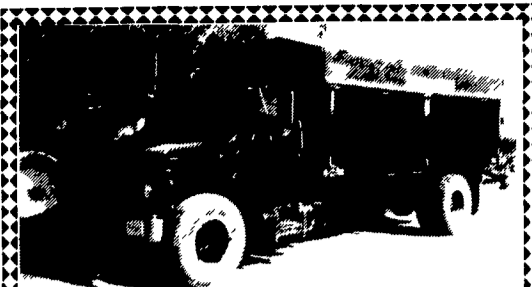


'94 Ford XL F150 HD, 300
EFI 5 spd, PS, PB, AM-
FM, dual tanks, 6,250
GVW, new radials, excel-
lent condition, black
\$9,900 717-733-2873

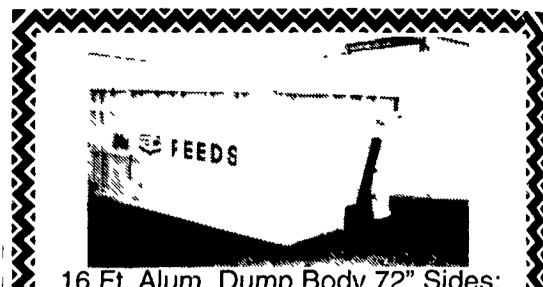
Excellent for farm use 10
wheel trucks with PTO and
feed tanker, 1976 Peterbilt,
1972 Mack Call for info
1 800 377 3059

Aluminum pallet carrier for
under trailer 2 1/2' high, 7'
wide, 13' long, \$200 Never
used (301)791-0020

CHEVY 3500, 1988, 4x4,
auto, air, rebuilt engine,
\$4,800/Offer
410-833-9091



1987 Int. Grain Truck
DT 466, 210 H.P., 5&2, 90% Rubber, year old
Obeco body & roll tarp - fresh paint
A-1 clean truck \$16,850 Firm
330-325-2605



16 Ft. Alum. Dump Body 72" Sides;
With Blower.
Also 20 Ft. Van Body, Side Door
22 Ft. Flatbed
Curry Supply Co., Curryville, Pa.
1-800-345-2829

McNAMARA Limerick, PA
SUBARU 1 (800) 753-3123
USED TRUCKS & CARS

- 1996 Ford F250, Crew Cab, DIESEL, 4x4, Auto, XLT, Sht Bed **Rare Find**
- 1996 Ford F-350 XL, 4X4, Auto, Air, 460 V8 **Save Thousands**
- 1995 Ford F-350 Crew Cab, XLT, Power Stroke DIESEL, Centurian Pkg, 5 Spd **Georgous Truck**
- 1994 Chevy Ext. Cab, Sht Bed, 4x4, Turbo, DIESEL, Auto, Silverado Pkg. **\$21,900**
- 1993 Dodge D-250 Club Cab, 4x4, Turbo DIESEL, 33K Miles, 5 Spd., Le Pkg. **Must See**
- 1994 Chevy 2500 4x4, Silverado Pkg, Auto, 350, V8, Air, 41K Miles. **\$19,500**
- 1994 Toyota Extra Cab 4x4, V6, 5 Spd., Air, 27K Miles **\$16,900**
- 1992 Ford F-250 XLT DIESEL, 4x4, Auto, Air, Tow Pkg **\$14,900**
- 1991 Dodge D-250 LE Pkg, 4x4, Turbo DIESEL, Auto, Air, 61K Miles **\$16,900**
- 1991 Ford F-250 XL, 4x4, Auto, Air, 302 V8, 60K Miles **\$13,900**
- 1988 Ford F-250, XLT, 4x4, 60K Miles, Auto **\$8,995**
- 1990 GMC Ext. Cab, 1 Owner, 4x4, Sht Bed, 350 V8, 62K Miles **\$14,900**
- 1988 F-250 XLT, 4x2 Diesel, 57K Miles, Auto, Air **\$9,900**
- 1990 Honda Civic HB, 5 Sp., A/C, Cass **\$5,995**
- 1990 Pontiac Grand Prix LE, Auto, A/C, Cruise, Alloy Wheels, PL, PW, Cass. **\$6,995**
- 1990 Subaru Legacy, 4 WD, Auto, A/C, PW, PL, Cruise, Tilt **\$8,995**
- 1992 Chevrolet Camaro RS, Auto, A/C, T-Tops, PW, PL, Cass, Alloy Wheels **\$8,995**
- 1992 Subaru Legacy, Auto, A/C, PW, PL, Cass, Only 47,000 Miles **\$9,995**
- 1993 Nissan Altima GXE, Auto, A/C, PW, PL, Cass, Tilt, Air Bag, Cruise. **\$11,995**
- 1993 Chevrolet Cavalier Z24, Auto, A/C, PW, PL, ABS, Cass, Cruise, Sunroof **\$12,995**
- 1993 Pontiac Grand AM SE, Cp, Auto, A/C, ABS, PL, Cass **\$9,995**
- 1994 Chrysler LHS Sdn., Auto, A/C, PW, PL, Cruise, Tilt, Cass, ABS, Dual Air Bags, Leather. **\$17,995**
- 1995 Subaru Legacy LSI Sdn, Auto, A/C, ABS, Leather, PW, PL, Cruise, Tilt, Cass, Dual Air Bags, Alloy Wheels, Power Roof & Much More. **\$19,995**

PRE-OWNED TRUCKS	PRE-OWNED CARS	PRE-OWNED MPV'S
'94 FORD F-150, S/CAB Gray, PW PL, Auto Cruise, AM/FM Cassette, A/C, 4x4	'92 VW PASSATT 5 Spd, 4 Door, Red, A/C PW & PL P Sunroof, AM/FM Cassette, Cruise Control	'94 JEEP GRAND CHEROKEE Laredo, Blue, PW, PL, Cruise, AM/FM Cass, Auto., A/C, 4WD
'93 FORD RANGER XLT Green A/C, AM/FM Cass, 5 Speed, Supercab	'96 MERCURY SABLE, GS, Auto, 4 Door, PW, PL, Cruise, A/C, AM/FM, Cassette, Blue	'94 JEEP GRAND CHEROKEE Laredo, Black, Auto, PW, P.L., P Seats, P Mirrors, Cruise, A/C, AM/FM Cass, 4WD
'95 FORD F-150 S/CAB Red, 4x4 5-Spd, PW, PL, Cruise, A/C, AM/FM Cassette	'94 FORD ASPIRE, 2 DR. Blue, 5 Spd, AM/FM Cassette	'95 FORD EXPLORER XLT Green, Auto Cruise, A/C, AM/FM Cass, 4 WD, PW, PL, P Mirrors
'94 CHEVY K-2600 S/CAB Turbo Diesel, A/OD, A/C, Silverado	'95 GRAND AM 2 DR. Dk Green, Auto, PL A/C, Cruise, AM/FM, Cassette	'90 CHEVY BLAZER S-10 2/Blue, Auto, AM/FM, 4WD, A/C, PW, PL
'89 CHEVY CHEYENNE 4X2 A/C, A/OD, AM/FM, 51 000 Miles	'90 GRAND PRIX, 4 DR. Blue, PL, Auto, Cruise, A/C, AM/FM Cassette	'92 FORD AEROSTAR XLT Red, Auto, A/C, AM/FM Cass, Cruise, PW, PL, P Mirrors
'94 F250 4X4 XLT 361 V-8, A/OD, A/C, 2-Tone	'93 CAVALIER Z24 V-6, A/C, A/OD, Roof	'93 FORD MARK III VAN HI-TOP White, Auto, A/C, Cruise, AM/FM Cass, PW, PL, P Mirrors, P Sofa
'94 F-150 4X4 S/CAB XLT, V-8, A/C, A/OD, 1-owner	'95 EXCORT LX SW A/C, 5 Speed, 1-Owner	'94 CHEVY S-10 BLAZER TAHOE A/C, A/OD, 20,000 Miles

ENGLE-RISSINGER AUTO GROUP

MIDWAY BETWEEN HALIFAX AND MILLERSBURG • 717-896-3421 • 1-800-242-8075

HOURS: MONDAY-FRIDAY 8:30 AM - 8:30 PM; SATURDAY 8:30 AM - 3:00 PM

LANCASTER'S
LARGEST
GM Truck Dealer
& We're
Getting Bigger

JONES BEST BUY USED TRUCKS

**PONTIAC • HONDA
GMC TRUCK**
1335 Manheim Pike, Lancaster

Prices based on straight sale, Tax & Tags extra.
Trades accepted at actual cash value.
Must present this ad at time of purchase for
sale price.

JONES
717-394-0711

				DIESEL
 '93 FORD CONV. VAN TV, AT, AC, V8 #6619 Was \$18,700 SALE \$16,800	 '86 BRONCO II 4X4 AT, AC, V6 Eddy Bauer # 6700 Was 5995 SALE \$4,250	 '95 MERCURY VILLAGER Navitca, Leather, AT, AC, V6 #6698 Was 19,900 SALE \$18,300	 '89 FORD AEROSTAR AT, AC, V6, XLT #6684 Was \$7,900 SALE \$5,500	 '94 CHEV C25 XCAB AT, AC, SLE #6587 Was \$19,995 SALE \$18,500
 '92 Ply Grand Voyager LE AT, AC, V6, 7 pass #6637 Was \$13,900 SALE \$11,900	 '94 CHEV SUBURBAN 4x4 AT, AC, V8, Silverado #6618 Was \$27,400 SALE \$25,500	 '92 GMC Suburban SLE, AT, AC, V8, 8 pass, #6678, Was \$17,900 SALE \$15,900	 '92 FORD RANGER XLT 5 spd, V6, AC #6705 Was \$9450 SALE \$7,350	 '89 GMC K15 4x4 AT, AC, V8, SLE #6630 Was \$10,900 SALE \$8,800
 '89 CHEV K1500 X Cab, 4x4, AT, AC, V8, Silverado #6701 Was \$13,900 SALE \$12,300	 '94 CHEV K BLAZER 4x4 AT, AC, V8, Silverado #6662 Was \$21,995 SALE \$20,475	 '94 CHEV K15 XCAB 4x4 AT, AC, V8, Silverado, 3600 miles, #6608, Was \$22,995 SALE \$20,700	 '94 CHEV K25 4X4 AT, AC, V8, Silverado, 8600 GVW #6584 Was \$20,495 SALE \$18,900	 '92 CHEV ASTRO R S, 8 pass, AT, AC, V6, #6676 Was \$12,200 SALE \$10,200
 '89 CHEV SUBURBAN 4x4, AT, AC, V8, Silverado #6696 Was \$14,700 SALE \$12,900	 '93 JEEP WRANGLER 4x4, 5 spd, V6 #6690 Was 14,900 SALE \$13,900	 '93 CHEV C15 XCAB AT, V8, AC, Silverado #6544 Was \$18,900 SALE \$16,980	 NEW '96 GMC CUBE VAN 14', AT, AC, V8, 11,000 GVW, #14254 Was \$29,700 SALE \$26,800	 '93 ISUZU TROOPER 4x4, LS, AT, AC V6, 4 Door #6686 Was 18,400 SALE \$16,100