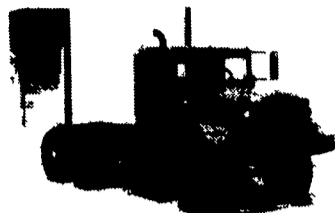
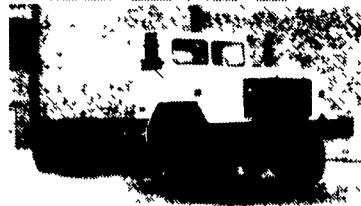


ARMY TRUCK PARTS

CHAMBERSBURG, PA

COMPLETE TRUCK INVENTORY
COMPLETE PARTS INVENTORY
THE NATION'S LARGEST ARMY
TRUCK AND PARTS DEALER



6x6 TRUCKS
2½ & 5 TON
UNITS AVAILABLE
ENGINES
TRANSMISSIONS
TRANSFER CASES
DRIVE TRAIN
CAB KITS

Request Our Free Army Truck Parts Catalog

MEMPHIS EQUIPMENT

821 Lincoln Way West
P.O. Box M
Chambersburg, PA 17201

717/263-4194 FAX 717/263-4555



GLENN ALLEMAN, GEN. MGR.
MARK SIPES, PARTS MGR.



MACK TRACTORS SALE

- R Models 1974 to 1989
 - All have Wetlines & 300 Engines
 - 5 & 6 Speed Trans.
 - 38,000 # to 44,000# Rears
 - Starting at \$8,000
 - Also Many Used Mack Parts:
Cabs, Motors, Trans., Rears & Front Ends
- WALKING FLOOR TRAILERS**
• 90 To 100 Yd. Closed & Open Tops With Side Roll Tarps.
VARIOUS FORD PICKUP TRUCKS
(610) 485-2474
(No Ad Solicitors)

1991 Kenworth T800 day cab 3176 CAT 9 speed, \$32,500 tractor only. 1996 Timpte 42x66 hopper bottom aluminum wheels and hubs \$680/month take over Telmark lease. Cortland, Ohio, Evenings, (330)638-4145.

1995 Dodge Laramie 2500, 4x4, diesel, auto, tow package, many options, 5th wheel, \$22,500 610-754-7934.

(2) 1984 MS300 Mack Midliners, Alician Auto. Trans., Air Brake, Cabin Chases, \$4,000 ea./obo; 1987 MS300 Mack Midliner, Auto. Trans., Cabin Chases, 4 Parts, B.G. (410)235-1066 Ext.284.

2-Way Mobile Radios, (1) 2-way radio base w/60' tower & antenna 717/336-3736.

6V51 detroit diesel, runs ex, best offer. Lancaster Co. (717)393-6530 / (717)394-6062.

'77 IH 1850 Load Star, IH 4466 diesel plus Allison automatic, 33,000 GVW, 22' Eby aluminum cattle rack, brand new 1988 diesel motor in, new tires; Large semen tank, like new. 717-367-7745.

'80 Mack U 600 237, 5 spd, Mack tandem rears, good motor, trans & rears. Cab fair, has power steering, NO 5th wheel, \$4,000. Felton, DE, (302)284-8774.

81 VW rabbit pick up, gas, very nice, 121,800 miles, \$2495. (717)872-5007.

'88 Chevy 2500 3/4 ton, 350 HD, 4 spd, PS, PB, air, AM-FM cassette, 7,200 GVW, 40,000 original one owner miles, new radials, dark blue, excellent condition, \$8,600. 717-733-2873

'88 Chevy C30 single rear whl w/9' Reading utility body, 292.6 cyl., HD, 4 spd, PS, PB, AM-FM, 9,000 GVW, 63,000 one owner miles, dark blue, \$7,900. 717-733-2873

'89 FORD XLT Lariat F250, super cab, 460 EFI, auto, PS, PB, PW, PDL, cruise, tilt, air, AM-FM cassette, 8,800 GVW, towing package, 1 owner, excellent condition, \$10,995 717-733-2873

'89 Ford XLT Lariat, F150, super cab, 302 EFI, 5 spd, PS, PB, air, AM-FM, dual tanks, 64,000 one owner miles, new radials, blue, excellent condition, \$9,900. 717-733-2873

8-horse gooseneck, rear and side load, dressing room, 8'W, 8'H, 43'6"L, (29' horse compartment, 7' dressing room), 12,000 miles, A/C, winch, 10,000# light weight. Asking \$22,000. (610)754-6919.

'90 Dodge 150, 1/2 ton, 318 EFI, auto, PS, PB, AM-FM, 41,000 one owner miles, new radials, excellent condition, \$7,900. 717-733-2873

'90 Ford XLT E150 7 passenger, 302 EFI, auto, PS, PB, PW, PDL, cruise, tilt, dual air, AM-FM cassette, privacy glass, blue, 52,000 miles, excellent condition, \$10,900. 717-733-2873

'91 Dodge LE 8 passenger, short wheel base van, 318 EFI, auto, PS, PB, PW, PDL, cruise, tilt, air, AM-FM cassette, 61,000 miles, dark blue, excellent condition, \$10,900. 717-733-2873

ENGINES FOR SALE:
Mack 86 300 285 237
Cat 3208 & Int DT 466
DETROIT ENGINE: 6V53 rebuilt, never run; 318, low miles. Silver 8V92; V671 & 671; Cat 3208; Int. DT466. Mack E6300; 237; 285; 673.
Gas Engine: Dodge 361; Ford 391; 361; Chevy 366; 427; 350.
Many other parts at reasonable prices.
HAP'S TRUCKS & PARTS
1-800-839-3338
Fax 610-944-0758

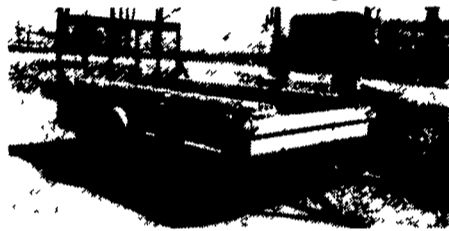
ZIMMERMAN MFG. CORP.

125 King Court/
Hollander Rd.
New Holland, PA 17557
(717) 354-9611

Contact Us For
Literature Or
The Dealer
Nearest You!

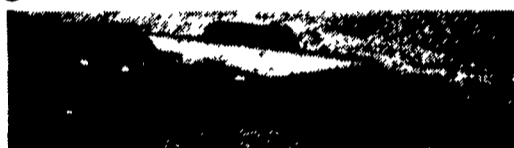
See Zimmerman Manufacturing for your custom built trailers.

Also check our inventory of ready to go trailers. Current stock includes:

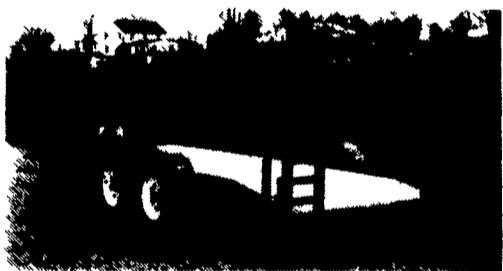


TC-3010 10' Single Axle, 3000 lb GVW, 14" tires
TC-3012 12' Single Axle, 3000 lb GVW, 14" tires
(Shown with optional wood racks)

All have 76" wide Mesh Tailgate Ramps, Decks of Treated Yellow Pine, Fenders, Lighting Package and option of Tongue Jack.



TC4012-E 12' Tandem Axle, 4000 lb GVW, electric brakes, 13" tires
TC5012-S 12' Tandem Axle, 5000 lb GVW, hydraulic brakes, 13" tires
TC70-E 16' Tandem Axle, 7000 lb GVW, electric brakes, 14" tires



RT SERIES



FRT SERIES

RT and FRT Series Trailers Available In 5000# thru 12,000# GVW

EBY USED EQUIPMENT

BODIES

- (2) 10' Eby Cattle Bodies
- (1) 14' Eby Cattle Body
- (1) 18' Wooden Cattle Body
- (1) 17' Eby Cattle Body
- (1) 20' Eby Cattle Body
- (1) 22' Eby Cattle Body

GOOSENECK

- 1992 Eby 20'x7'6" x8'6"
- 1990 Four Star 20'x7'x6'6"
- 1989 Eby 20'x8'x7' Ruff Neck
- 1988 Wilsc n 22'x7'x7'
- 1981 Eby 22'x8'x6'9"

M.H. Eby, Inc.

1194 Main Street (Route 23)
Blue Ball, PA 17506
(717) 354-4971; (800) 292-4752
FAX: (717) 355-2114
4435 State Route 29
West Jefferson, OH 43162
(614) 879-8001 (800) 752-0507
FAX: (614) 879-8004

IN ALUMINUM BODIES EBY BUILDS IT

M.H. Eby custom-builds aluminum truck bodies for the agri-transportation market. Nobody offers more sizes and options in:

- FLATBED BODIES - Lengths to 32', choice of 5 widths.
- GRAIN BODIES - Lengths to 24', landscape and general purpose dumps to 12'.
- LANDSCAPE BODIES - Lengths to 12', We'll build to your specs!

For greater payload capacity, Eby's aluminum design is equal in strength to steel and up to 40% lighter. Our corrosion-resistant components never need painting. That means minimum maintenance, improved appearance and higher resale value.

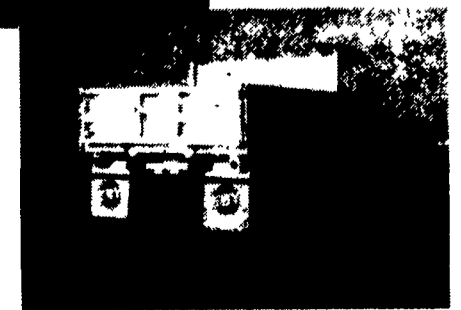
Eby products have superior standard features. And we offer customer options for virtually any application. Agriculture is your business - building bodies to haul it is ours.



1194 Main Street
Blue Ball, PA 17506



Let EBY
custom build
one for you.



800-292-4752