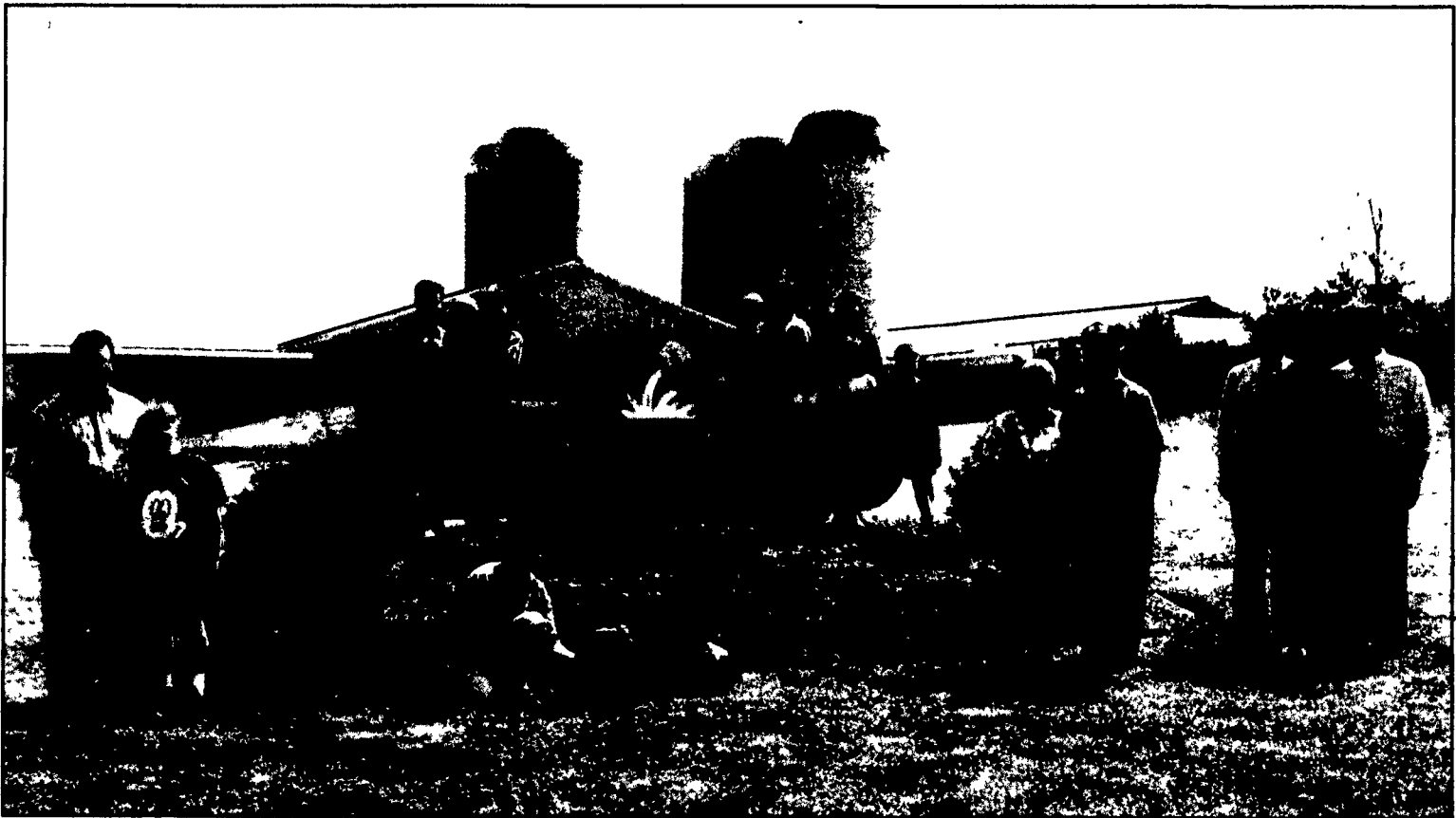


# CONGRATULATIONS TO OAK BLUFF FARMS AND 1996 MASTER FARMER, GLENN E. EAVES, SR. FOR NEARLY 40 YEARS OF COMMITMENT TO AGRICULTURE AND THE DAIRY INDUSTRY



**PICTURED: THE EAVES FAMILY** - Front Row (L to R): Doug, Katie, David, Clyde (dog), L. Jean and Glenn Eaves, Sr.; Darvin Boyd, Sandra Fellers and Wayne Steinour from the CoreStates Agri-Finance Department. Back Row (L to R): Richard, Tammy (holding Ryan), Glenn, Jr. (holding Brandon), Rebecca and Andrew, Garrison and Glenn, III.

CoreStates Bank believes **"THE FAMILY FARM IS THE BACKBONE OF AGRICULTURE."** On behalf of all dairymen, we are pleased to salute the success of Glenn and Jean Eaves and their family at 10236 Oak Hill Road, Woodsboro, Frederick County, Maryland. The Eaves' family has been dairying for nearly 40 years and includes sons, Douglas, Glenn, Jr., Richard and also daughter-in-laws, Rebecca and Tammy. The operation includes eight farms and the farming of over 3,500 acres of which 1,600 are owned. The total herd is comprised of 3,300 cows and 1,300 heifers. The current milking herd of 2,600 holsteins has an average of 18,500 lbs. of milk. The Eaves' family have served in various civic and community organizations in Frederick County all of their lives, as well as being active in many state and regional organizations.

**A SALUTE TO  
DAIRY FARMERS.  
EVERY MONTH IS  
DAIRY MONTH  
WITH US.**

June is National Dairy Month and at CoreStates Bank we feel you deserve credit more than one month out of the year. Managing a successful

dairy operation requires working capital all year round. We're here to help you meet your financial needs.

Dairy is a major agricultural enterprise in Pennsylvania and Maryland and at CoreStates Bank we are proud to be a major lending source to agriculture.

Talk to your friends at CoreStates Bank, where every month is dairy month.



You Know Us. We Know You.