

METALFAB TRAILER AUTO & TRUCK SALES

4294 East Harrisburg Pike
Middletown, PA 17057

"Next to Tool Shed of America"
717-944-1261



1978 BRONCO
Rebuilt 400 CI, Auto, PS, PB, New
Tires, 2/97 Insp. Has Some of Usual
Rust But Not Excessive. \$1,999

1970 Ford XLT
Well Kept, Has All The Nice
Trim, 390 V8, 4 Spd
w/Granny, Looks And
Drives Great,
Stop & Drive It Away \$1,699



1983 BRONCO
302 CI, Auto, Air Cond., 2/97
Inspec., PS, PB, Rusty Outside Nice
Inter. Priced To Go At \$1,599



1974 CHEV WINDOW VAN
Long Wheelbase, Has One Bench Seat
In Rear, V8, Auto, PS, PB, Nice Interior,
Very Little Rust, Runs A1 \$1,599



**1982 Dodge Passenger
Van**
Short Wheel Base, V8,
Auto, Cold Air Cond.,
Inspected & Priced
To Go At \$1,699



1988 Bronco II
4 WD, XLT, 2.9 V6, 5 Spd., Air
Cond., PW, PB, PS, PDL, Cruise,
Alum. wheels, Runs/Drives A1,
Bump on Right Rear,
142,000 MI \$2,999



**"NEW"
UTILITY TRAILER**
3,000 GVW, Extra Heavy Frame
w/Treated Lumber Deck,
Lights Chains, Etc.
Included!!! 5'x10' Deck \$750
6'4"x12' DECK \$850
Add-On Landscape
Ramp/Gate \$145



**"NEW"
16' Deck Car Hauler**
Has Two 24" Wide Diamond Steel Runners, Tube Steel Frame,
4-Wheel Brakes, Safety Breakaway Kit & Full Lighting,
Beavertail & Ramps, Removable Left Fender & More For \$1,750

Hours: Tues. - Fri. 9 AM - 6 PM
Saturday 9 AM - 2 PM
Closed: Sunday & Monday

THOMPSON MOTORS INC.

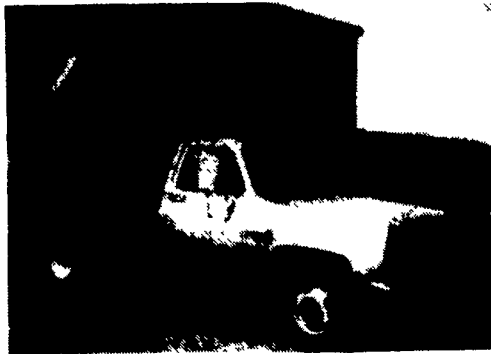
Repairable Vehicles Bought & Sold
Springtown, PA 610-346-8588

30 FLOOD CARS IN STOCK, MOST RUN & DRIVE

Specials of the Week

'87 Ford Backhoe, 4x4, runs & drives,
works, 3500 hours.....\$17,000
'95 F150 Extra Cab Ford, water damaged,
V8, auto.....\$10,500

FOR SALE



**1984 CHEVROLET C30
DUMP TRUCK**
Rebuilt Engine

\$6,900 OR Best Reasonable offer

Call 717-866-2246

No Sunday Calls



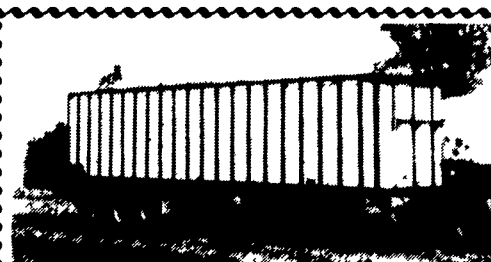
Used Reefers

1992 Carrier Eagle Plus
Kubota Diesel, R502 Digital Display, 4800 hrs.,
Serviced, Like New
1992 Carrier Metro Bird
Kubota Diesel, Electric Standby, R500, 1900 hrs.,
Serviced, Like New
Carrier Silver Hawk
Kubota Diesel, R12, Reconditioned
1983 Thermo King
RDI-50, Electric Standby, R12, 6700 hrs.,
22000 BTU at 35° F., Reconditioned



7.3 Diesel, Low
Miles, Can Hear
Test Run
\$3,000.00

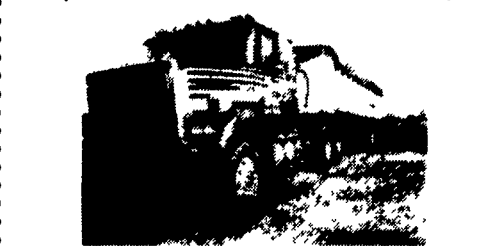
717-354-3199



'79 BOCATS TRAILER, Walking Chain Floor, Fair
cond., rollover tarp.....\$5500 OBO



'89 EAST 34' Dump with rollover tarp,
sharp.....\$22,000



'82 WHITE 400 B.C. 3 Cummins, 13 speed,
150,000 DN overhaul, well maintained,
wet line.....\$7,500

Mt. Joy 717-653-9580

NO CDL



1979 IH DT466, 5+2 spd, 25,000 GVW
(No CDL) w/20 ft Van, 11.R22.5 Tires,
Garage kept



1992 ISUZU NPR, diesel, Auto, A/C,
low miles W/10 ft Kidron Reefer body
Like New



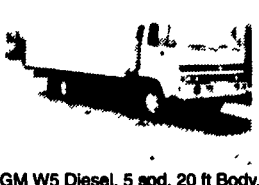
1986 C-30 Chev. V-8, 4 spd, 9Ft OMAHA
Dump Body, 10,500 GVW, Very clean.
\$7900.00



1975 LN900 - 477 motor, 5+2spd, A/B,
P/S, 10 ft Dump, 66,000 Miles, Clean unit,
\$4800.00



1989 IH 1954, DM466, 6speed, A/B, P/S,
33,000 GVW, 138" C to A-98,000 miles



1990 GM W5 Diesel, 5 spd, 20 ft Body,
18,000 GVW, clean \$8950.00 ALSO 1991
GM W7, 26,000GVW (no cdl) 18ft Van Body

MARTIN'S USED TRUCKS & EQUIPMENT INC.

REEFERS
VANS
FLATBEDS

INSPECTIONS
TOWING
USED PARTS

560 Lampeter Rd., Lancaster, Pa. 17602

Robert Martin (717) 392-6266 (717) 299-6200

WE SERVICE WHAT WE SELL



94 PLY. GRAND VOYAGER SE
3.3L, AT/OD, Dual Airbags, Dual AC & Heat,
PW, PDL, Tilt, Cruise, Cass, ABS, Alloy Wheels,
7 Pass, Loaded, Dk. Cherry, 37,000 Mi.
\$14,900



91 PLY. GRAND VOYAGER SE
3.3L, AT/OD, Airbag, AC, PDL, Tilt, Cruise,
ABS, Cass, 7 Pass, Black
\$8,900



93 GMC SIERRA SL 1500
4.3L, AT/OD, AC, PS, PB, Cass, Bed Liner, Blue,
22,000 Mi
\$12,500



88 FORD ECONOLINE 250
5.8L, AT, AC, PS, PB, Window Van, No Seats,
Blue
\$4,800



88 FORD CLUB WAGON XLT
E-350 Maxi Van, 12 Pass, 5.8L, AT, Dual AC &
Heat, PW, PDL, Tilt, Cruise, PS, PB, Dual
Tanks, Running Boards, Tutone Blue, 62,000 Mi
\$10,800



88 CHEVY C-30 BOX TK.
350 V8, AT, AC, PS, PB, 10,000 GVWR, Dock
Height Liftgate, 12 Ft Box, Gray
\$9,800



78 WINNEBAGO
25 Ft Class A Motorhome, 440 V8, AT, AC,
PS, PB, Sleeps 7, Roof AC, Heater, Stove,
Refer, Gen, Rear Bath, Awning, 60,000 Mi
\$6,800



74 DODGE 600 TK
17 Ft Flat Bed, 318 V8, 4 Spd, 24,000
GVWR, Damage to Roof & Hood
\$2,800

FINANCING AVAILABLE

93 Chevy Beauville.....\$11,900
90 Chev Lumina APV
Cargo.....\$4,800
89 Dodge Caravan SE.....\$4,995
89 Ply. Voyager LX.....\$4,895

86 Dodge Caravan LE.....\$4,800
86 Dodge Ram 250 Royal
SE Van.....\$5,900
14 Ft. Fishing Boat, 8 HP
Evinrude, Trolling Motor..\$1,500

E.M. KURTZ, INC.

NEW & USED EQUIPMENT SALE

CLEAN-OUT SALE

Gleason 707 Spreader.....\$450
Omaha Topper with Ladder Rack.....\$1,600
Bartlett Hydraulic 5th Wheel, without pump.....\$500
Used Slider 5th Wheels.....\$125
Used Stationary 5th Wheels.....\$100
8' Steel Dump Body for Medium Duty Truck.....\$650
9'6" Steel Dump Body, Low-sided 14" with 33"
Tailgate with Hoist.....\$775
9' Dump with 26" Sides.....\$450
16' x 46" Side Steel Dump.....\$1,250
17' Aluminum body with Cylinder -
58" Sides & Gate.....\$2,450
Reading 108 Dual Wheel Service Body with Side
Damage, 1 Side.....\$300
Wrecked White Road Commander Tractor with
Hendrickson Suspension.....\$2,500
Take-off Pickup Bed - 8' Chevy.....\$875
Take-off Bumpers for Ford, GMC, IH Trucks.....\$45
New Take-out Seats from Ford F350 Chassis.....\$200
Ford Single Axle Tractor with Wet Line.....\$600
9' Hopper Spreader.....\$200
10' x 94" Stake Body.....\$325
Small Lift Axle for Trailer.....\$300
Clark Push Tractor with Engine & one for parts \$500
1978 Chevy Pickup - Rough.....\$250
Grab Bag Body - Van Body with misc. truck gas
engine parts, including body.....\$400
**USED WET LINES - USED PUMPS -
USED PTO'S & TANKS - CALL FOR PRICING**
SCRATCH & DENT DUMP BODIES:
8'6" 3/4 Yard with Cab Shield & Hoist.....\$2,500
10' with Cab Shield & Hoist.....\$2,600
NEW EQUIPMENT:
New Turner Lift Axle with 15" Hubs.....\$2,200
Buyers Mini Poly Salt Spreaders.....\$850
Valley E-Z Dumpers.....\$1,795
10:00 x 20 Tire Chains, per pair.....\$115
ALL TIRE CHAINS REDUCED CALL FOR PRICING
7 1/2' Fisher Conventional Snowplows - subject to
availability -- CASH & CARRY.....\$2,075
Omaha Model 520 Hoist with Pump.....\$1,550

COMPLETE INVENTORY OF DUMP BODIES, STAKE BODIES,
PUMPS, TOOL BOXES & MISC. TRUCK EQUIPMENT

Now With Two Locations to Serve You:

E.M. KURTZ, INC. **E.M. KURTZ, INC.**
2456 Morgantown Rd 715 Front St.
Reading, PA 19607 Whitehall, PA 18052
1-800-974-9779 610-264-9777

PINE TREE MOTORS

Rt. 322 & Clearview Road, Clay
Lancaster Co., PA
717-738-2242