

**35 TRUCKS & TRAILERS**

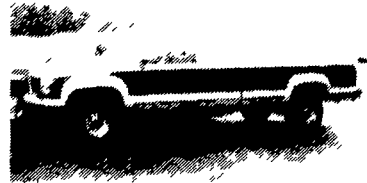
1973 Ford tandem axle dump, 56,000 GVW, \$5,500 OBO (717) 759-3654 (717)759-6567

PRE-OWNED TRUCKS	PRE-OWNED CARS	PRE-OWNED MPV'S
'94 FORD F-150, S/CAB Gray, P.W., P.L., Auto, Cruise, AM/FM Cassette, A/C, 4x4	'92 VW PASSATT 5 Spd, 4 Door, Red, A/C, P.W. & P.L. P Sunroof, AM/FM Cassette, Cruise Control	'94 JEEP GRAND CHEROKEE Laredo, Blue, P.W., P.L., Cruise, AM/FM Cass., Auto, A/C, 4WD
'93 FORD RANGER XLT Green, A/C, AM/FM Cass., 5 Speed, Supercab	'96 MERCURY SABLE, GS, Auto, 4 Door, P.W., P.L., Cruise, A/C, AM/FM, Cassette, Blue	'94 JEEP GRAND CHEROKEE Laredo, Black, Auto, P.W., P.L., P. Seats, P Mirrors, Cruise, A/C, AM/FM Cass., 4WD
'95 FORD F-150 S/CAB Red 4x4, 5-Spd, P.W., P.L., Cruise, A/C, AM/FM Cassette	'94 FORD ASPIRE, 2 DR. Blue, 5 Spd, AM/FM Cassette	'95 FORD EXPLORER XLT Green, Auto Cruise, A/C, AM/FM Cass., 4WD, P.W., P.L., P. Mirrors
'94 CHEVY K-2600 S/CAB Turbo Diesel, A/OD, A/C, Silverado	'95 GRAND AM 2 DR. Dk Green, Auto, P.L. A/C, Cruise, AM/FM, Cassette	'90 CHEVY BLAZER S-10 2/Blue, Auto., AM/FM, 4WD, A/C, P.W., P.L.
'89 CHEVY CHEYENNE 4X2 A/C, A/OD, AM/FM, 51,000 Miles	'90 GRAND PRIX, 4 DR. Blue, P.L., Auto, Cruise, A/C, AM/FM Cassette	'92 FORD AEROSTAR XLT Red, Auto., A/C, AM/FM Cass., Cruise, P.W., P.L., P Mirrors
'94 F250 4X4 XLT 361 V-8, A/OD, A/C, 2-Tone	'93 CAVALIER Z24 V-6, A/C, A/OD, Roof	'93 FORD MARK III VAN HI-TOP White, Auto, A/C, Cruise, AM/FM Cass., P.W., P.L., P Mirrors, P Sofa
'94 F-150 4X4 S/CAB XLT, V-8, A/C, A/OD, 1-owner	'95 EXCORT LX SW A/C, 5 Speed, 1-Owner	'94 CHEVY S-10 BLAZER TAHOE A/C, A/OD, 20,000 Miles

**ENGLE-RISSINGER AUTO GROUP**

MIDWAY BETWEEN HALIFAX AND MILLERSBURG • 717-896-3421 • 1-800-242-8075  
HOURS: MONDAY-FRIDAY 8:30 AM - 8:30 PM; SATURDAY 8:30 AM - 3:00 PM

**USED TRUCKS**



'94 GMC 2500 4x4 Ext. Cab, SLE, 350 FI, 5 Spd, PS, PB, AC, Cruise, Tilt Wheel, P.W., PDL, AM & FM Stereo Cass., Rear Sliding Window, 11,000 Miles  
**\$22,500**



'93 Chev 3500 4x4 6.5 Turbo Diesel, Silverado, Auto w/OD, PS, PB, AC, P.W., Pdl, Cruise, Tilt Wheel, 38,000 Miles  
**\$19,800**

Financing Available

**MARTIN'S AUTO SALES**  
1025 W. Main St., New Holland, PA 17557  
(717) 656-6621

**LEFEVER BROS. CHEVROLET GEO**

406 U.S. Route 15 North, Dillsburg PA

Quality Dealer Since 1921 **717-432-9611**

**1996 CHEVY KODIAK**

LoPro 10' Dump Truck, 26,000 GVW, Gas, 5-Speed, AC, PS  
**\$32,730**



"NEW"

**1994 CHEVY C-70 DUMP**

33,000 GVW, 215 H.P. Cat, 5+2, Air Brakes, Air PTO and End Gate  
**\$41,500**



**1995 CHEV C-70**

26,000 GVW, 5+2 Speed Gas or Diesel; 240" Wheel Base with Slide Frame



'91 Dodge LE 8 passenger, short wheel base van, 318 EFI, auto, PS, PB, PW, PDL, cruise, tilt, air, AM-FM cassette, 61,000 miles, dark blue, excellent condition, \$10,900  
717-733-2873

'92 Chevy Tahoe S10, ext cab, V6, 5 spd, PS, PB, AM-FM cassette stereo, 30,000 miles, red & silver, excellent condition, \$8,975 717-733-2873



'89 IHC F-2275, 350 Cummins, 9 Spd, Spring, AC, PS, \$12,900 #G-797

**EVANS EQUIPMENT INC.**

P.O. Box 246/Levittown, PA 19059 7800 Route #13/Levittown PA 19057  
(215)547-7200 Evenings: (609)786-1962  
FAX (215)945-8556



**1995 Ford XLT F250, Super Cab,** 2WD, 7.3 Litre Power Stroke, Diesel, PS, PB, PW, PDL, Cruise, Tilt, Air, AM-FM Cass., 8,800 GVW, Less Than 2,000 Miles With Bal. of Factory Warranty, Like New, Blue  
**\$23,500**

**A&J Auto Sales**

798 E. Main St., Ephrata, PA 17522  
**717-733-2873**

**ALL STEEL REPLACEMENT TRUCK BED**



7'Lx71"W or 85"W  
8 1/2' Lx80"W or 90"  
10'Lx8"W, 12'Lx8"W

Also Available in 4'x7' and 4'x8'

5'x8' Starting at \$650  
5'x10' Starting at \$695



UTILITY (TILT OR GATE MODEL) SIZES:  
5'x8', 5'x10' 2000# GVW - 5'x10', 6'4'x10', 6'4'x12', 3000# GVW



UTILITY WITH GATE-SIZES:  
16'x76", 18'x76", 7,000# GVW,  
20'x81" 12,000# GVW

Also Available in Car Haulers 16', 18' 7,000# GVW



FLAT BED: Sizes: 16'x76", 18'x81"  
7000# GVW, self storing 80" long ramps

STARTING AT \$795.00



Car Dollie

\$50 off on \$795 model w/AD

**HIGHWAY HYDRAULIC DUMP**



5'x8', 3000# \$2,050  
6'x10', 7,000# \$3,095  
6'x10', 10,000# \$3,495  
7'x12', 10,000# \$3,995

**LOW PROFILE DUMP TRAILERS**



6'x10' GVW low profile dump trailers w/ landscape gate

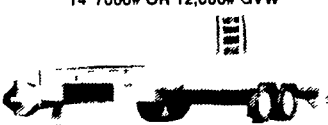
7,000# \$3,495  
10,000# \$3,795

Starting At \$3795 w/4' Adj Tail



GOOSENECK SIZES: 20'x8' 12,000# or 14,000# GVW, 24'x8' 14,000# GVW

**DROP AXLE CONSTRUCTION**



14' 7000# OR 12,000# GVW

DECK-OVER CONSTRUCTION  
18'x8' w/Tail 10,000# GVW \$3,295

**SPECIAL SALE ROTARY MOWERS**

7' pull type rotary mower \$2000

Luggage carrier for Class

8 & 11 hitches \$89 & \$99

Used Class I Bronco Hitch, fits 1978-88 \$35

Over 300 Trailers In Stock Starting At \$475.00 T-Plates DEALERS WANTED



**KUTZ FARM EQUIPMENT, INC.**

Pine Grove, PA (717) 345-4882 FAX 717-345-2884

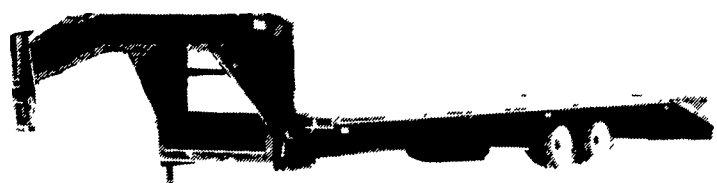
8 AM-5 PM MONDAY TO FRIDAY  
8 AM-12 SATURDAY OR BY APPOINTMENT

**NEAL BUTERBAUGH & SON UTILITY TRAILERS**

**Flatbed Goosenecks**

GVW: 14,000, 2 - 7,000 Axles, Electric Brakes, Rub Rails, Stake Pockets, Ramps, Spare Tire, Dual Jacks, 12" I Beam.

102 x 26' w/ 5' Dovetail	<b>\$4,277</b>
102 x 26' Straight	<b>\$3,995</b>
102 x 24 Straight	<b>\$3,895</b>
102 x 20 Straight	<b>\$3,530</b>
83 x 18 w/ 2' Dovetail	<b>\$3,234</b>



**Utility Bumper Pull**

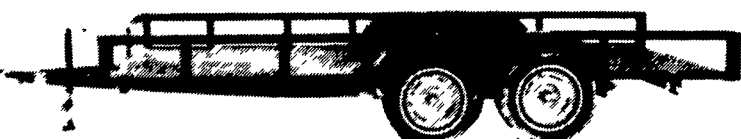
Electric Brakes, 5 Foot Ramps, Stake Pockets, 6" Channel Frame.

83 x 18	7,000 GVW	<b>\$1,925</b>
83 x 18	12,000 GVW	<b>\$2,395</b>
83 x 18	14,000 GVW	<b>\$2,667</b>



**Utility Bumper Pull**

77 x 16 7,000 GVW **\$1,550**



**NEAL BUTERBAUGH & SON**

Bedford, PA 15522, Exit 11 of the PA Turnpike  
**814-623-8705**