

PRODUCE MARKETS

Philadelphia Fruit Market

PHILADELPHIA
JUNE 12, 1996

CITRUS FRUITS

---GRAPEFRUIT: MARKET STEADY ctns AZ Red 40s few 9.00-9.50 48s few 9.00-9.50 4/5 buctns FL Indian River Red 18s 11.00 23s 11.00 27s 11.00 32s 11.00 36s 11.00 40s 11.00 48s 11.00

---LEMONS: MARKET LOWER ctns CA 95s 18.00-20.00 fr qual 15.00-18.00 mos 16.00-17.00 115s 19.00-21.00 fr qual 17.00-20.00 mos 19.00 140s 23.00 fr qual 17.50-21.00 mos 17.00-19.00 165s 24.00 fr qual 20.00-22.00 some 18.50 200s 20.00 fr qual 15.00-19.00

---LIMES: MARKET LOWER 10 lb ctns MX 42s 7.00 48s 5.50-6.00 mostly 5.50 54s 4.50-6.00 mostly 5.50 63s 4.00-5.50 mostly 4.00-4.50 few 3.50

---MISC CITRUS: OFFERINGS LIGHT 10 lb ctns CA Kumquats 12.00

---ORANGES: MARKET STEADY ctns AZ Valencia 72s 15.00-16.00 CA Valencia 56s 17.00-19.00 72s 16.00-18.00 mostly 18.00 88s 13.00-15.00 mostly 14.50-15.00 fr qual 12.00 113s 11.00-13.00 few 13.50 fr qual 11.50 138s fr qual 10.00-10.50 4/5 buctns FL Valencia 56s 8.00-11.00 mostly 8.00-9.00 64s 10.50-11.00 80s 9.00-10.50 some 8.00

100s 9.00-11.00 some 8.00 125s 11.00

---TANGELOS: OFFERINGS NONE

---TANGERINES: OFFERINGS NONE

---TEMPLES: OFFERINGS NONE

---BLUEBERRIES: MARKET ABOUT

STEADY flts 12 1-pt cups with lids AR med-lge 24.00 NC med-lge 18.00-22.00 few 24.00

---CRANBERRIES: OFFERINGS NONE

---MISC BERRIES: OFFERINGS LIGHT flts 12 6-oz cups with lids CA Blackberries 18.00 flts 12 1/2-pt bkts with lids GU AIR Blackberries 16.00

---RASPBERRIES: OFFERINGS LIGHT flts 12 6-oz cups with lids CA Red 21.

---STRAWBERRIES: MARKET LOWER flts 12 1-pt bkts CA med-lge 9.00-12.00 preferred labels 14.00-15.00 mos 14.00 med fr cond 5.00

---CANTALOUPS: MARKET ABOUT

STEADY 1/2 ctns/crts AZ 9s 10.00-13.00 mostly 12.00 12s 14.00-15.00 CA 12s 15.00 previous commitments 14.00 15s 17.00 previous commitments 16.00 bins GA 175 count 250.00 few 235.00

---HONEYDEWS: MARKET LOWER 2/3 ctns CA 5s 6.00-7.00 few 5.00 6s 5.00-6.00 MX 6s 6.00 8s 6.00 TX 5s

5.00-7.00 mostly 6.00 6s 6.00-7.50 few 5.00 8s 6.00-7.50 few 8.00

---MISC MELONS: OFFERINGS INSUFFICIENT TO QUOTE

---WATERMELONS: MARKET

ABOUT STEADY ctns per ctn FL Red Seedless 4s 14.00 5s 14.00 MX Jubilee 3s 11.00-12.00 TX Allsweet 3s 15.00-16.00 bins per melon FL Sangria 18-20 lb 3.00 20-24 lb 3.25-3.50 24-28 lb 4.00 26-30 lb avg 4.50-5.00 Crimson Sweet 22-24 lb 3.00 Royal Sweet 22-24 lb 3.00 26-30 lb avg 4.00 TX Royal Sweet 30-32 lb 5.00

NON-CITRUS FRUITS

---APPLES: MARKET STEADY 18 kg ctns AG BOAT Granny Smith 70s 16.00 80s 16.00 90s 16.00 100s 16.00 CONTROLLED ATMOSPHERE STORAGE

ctns trypk CA U.S. Fcy Granny Smith 72s 15.00-18.00 88s 15.00-18.00 WA WAExFcy Red Delicious 48s fr cond 10.00 80s 18.00 88s 18.00-20.00 mostly 19.00-20.00 one label 23.00 100s 18.50-19.00 one label 22.00 113s 17.50 125s 17.50 Golden Delicious 100s 20.00 Granny Smith 100s 20.00 Red Rome 48s fr cond 8.00-10.00 U.S. ExFcy Red Delicious 72s 13.00-14.00 88s 13.00-15.00 Golden Delicious 88s 20.00 100s 18.50 113s 17.50 Granny Smith 80s 23.00 88s 22.00 WA Fcy Red Delicious 64s 15.00 72s 15.00 80s 15.00 88s 15.50-16.00 mostly 16.00 100s 15.00-17.00 113s 15.00-17.00 mostly 15.00-16.00 Golden Delicious 100s 18.00 113s 18.00 Granny Smith 72s 11.00-14.00 Fuji 36s fr cond 10.00 U.S. Fcy Golden

Delicious 80s 16.50-17.00 88s 16.50-17.00 ctns celpk VA U.S. One McIntosh 80s 13.00-14.00 100s 13.00-14.00 120s 10.00-11.00 140s 10.00-11.00 WA U.S. ExFcy Golden Delicious 96s 21.00 ctns 12 3-lb flmbgs WA U.S. ExFcy Granny Smith 2 1/2" up fr cond 9.00-10.00 ctns 8 5-lb flmbgs WA U.S. ExFcy Granny Smith 2 1/2" up fr cond 9.00-10.00

---APRICOTS: MARKET STEADY 24 lb ctns lse CA Derby Royal #8 24.00 #10 24.00 #12 24.00 Queen #10 18.50-19.00

---AVOCADOS: MARKET STEADY ctns 2 lyr CA Hass 48s 27.00-28.00 ctns loose 48 sz 27.00

---BANANAS: MARKET STEADY 40 lb ctns IMPORT 13.00 fair qual 11.00-12.00 few 10.50 small 9.00-10.00 mos 9.50 40 lb ctns bagged IMPORT 13.00 ctns institutional pk IMPORT petite 13.00

---CHERRIES: OFFERINGS INSUFFICIENT TO QUOTE

---FRUITS OTHER: NO SALES REPORTED

---GRAPES: MARKET STEADY 20 lb lugs CA Perlette med 22.00-23.00 fr cond 12.00-14.00 Thompson Seedless med 29.00-33.00 Flame Seedless med 24.00 White Seedless Type med-lge 25.00 MX Flame Seedless med 18.00-20.00 White Seedless Type sml 15.00 18 lb lugs bgd CA Perlette med 18.00-23.00 mostly 19.00-20.00 fr cond loas 16.00 Flame Seedless sml 16.00-17.00 med 20.00-23.00 Black Beauty Seedless med-lge 28.00 MX Flame Seedless med 19.00-23.00 mostly 19.00-20.00

---KIWIFRUIT: MARKET STEADY flts 1 lyr CL BOAT 36s 6.00 39s 6.00-7.00 ctns 22 lb lse CL BOAT 36 sz 11.00 39 sz 11.00-12.00 42 sz 10.00

---MANGOES: MARKET ABOUT STEADY flts 1 lyr MX Haden 9s 5.00-6.00 10s 5.00-6.00 mostly 5.00-5.50 12s 5.00-5.50 14s 5.00-5.50 Tommy Atkins 10s 5.00-5.50 mostly 5.00 12s 5.00-5.50 mostly 5.00 14s 5.00-5.50

---NECTARINES: MARKET STEADY ctns 2 lyr trypk CA California Well Matured Sparkling June 54s 20.00 25 lb ctns lse CA California Well Matured May Diamond 84 sz 11.00 earli glo 72 sz fr cond 9.00 royal glo 60 sz 16.00 70 sz 12.00 80 sz 10.00 May Grand 60 series 18.00-19.00 mostly 18.00 70 series 14.00 80 series 10.00-12.00 mostly 10.00-11.00 Rose Diamond 80 series 10.00-10.50 red glo 60 sz 16.00 70 sz 12.00 80 sz 10.00 72 sz 13.00-14.00

---PAPAYA: 10 lb ctns HI AIR 10s fr appearance 8.00-10.00 11s fr appearance 8.00-10.00

---PEACHES: MARKET STEADY 25 lb ctns lse CA California Well Matured David Sun 60 series 16.00-17.00 70 series 15.00-16.00 Springcrest 64 sz 18.00 Crimson Lady 64 sz 17.00 70 sz 15.00 SC No Grade Marks Garnet Beauty 2 3/4" up 22.00 2 1/2" up 20.00

---PEARS: MARKET STEADY 40 lb ctns/boxes AG BOAT Bartlett 70s 20.00 80s 20.00 90s 20.00 100s 18.00 110s 18.00 120s 18.00 28 lb ctns SF Packham

Increase Your Income From Milk Sales

We are looking to increase our high quality milk supply in Berks, Chester, Dauphin and Lancaster Counties.



- No Coop Dues
- Solids Non Fat Premiums
- Quality Premiums
- Lower Hauling Rates & Stop Charges

From a proud neighborhood dairy in the 1920's to a modern manufacturing company of the 1990's, the Dietrich family-owned business continues to move forward. With the dedication of three generations and a heritage rich in experience and innovation, Dietrich's Milk Products faces the future with confidence. Give us a call and see what we are all about.

Dietrich's Milk Products, Inc.

100 McKinley Avenue
Reading, PA

Field Representative
Daniel Vosburg • New Holland, PA
(717) 354-5562

GREENCASTLE LIVESTOCK MARKET, INC.

Off Exit 3 of I-81
GREENCASTLE, PA. 17225

SALES EVERY
MONDAY at 2:00 P.M.
THURSDAY at 1:00 P.M.

STOCK CATTLE SALE
Friday, June 21 - 7:15 P.M.

Brood Cow - Sell Beef Type Only!
Cow, Calves, Breeder Cows and
Stock Bulls.

NEXT FEEDER CATTLE SALE
FRIDAY, JULY 5

HAY & STRAW SALE BOTH DAYS at 11:00 A.M.
FEEDER CATTLE SALE on Friday Night at 6:00 P.M.
Poultry, Eggs, Rabbits & Pigs
Every Wednesday at 6:30 P.M.

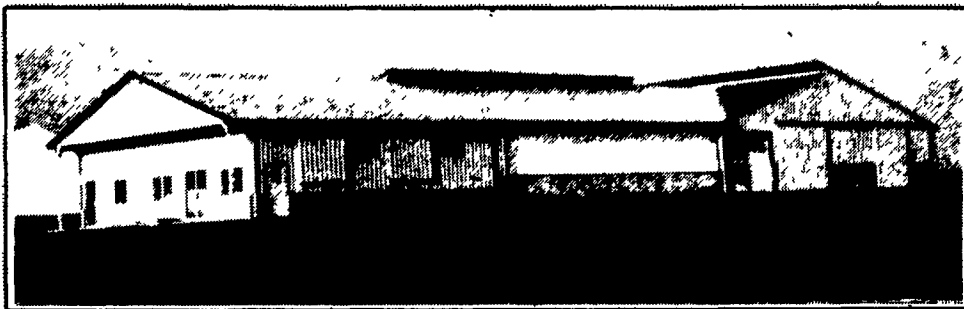
Charles "Jim" Metz,
OFF. MGR.
Res. (301) 739-4470

Jeffrey S. Craig,
OWNER
Res. (717) 532-5224

OFFICE - 717-597-2171

KEYSTONE CONCRETE PRODUCTS INC.

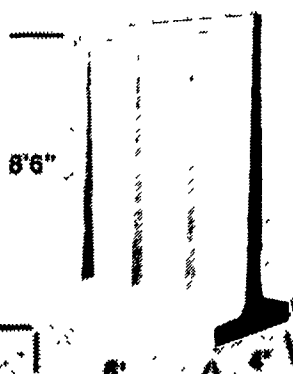
477 East Farmersville Rd.
New Holland, PA 17557
(717) 355-2361



Concrete Slatted Free Stall Barn



Long Core Cattle Waffle Slats



Outside T-Wall Bunker Silo Sections



12 Ft. High Wall Available For Outside Or Center Divider

