

**Old Barns, Log Cabins, Warehouses and Factories Wanted for Salvage and Removal.**

We buy buildings with 15 years experience. Fully insured.

**K-Wood and Logs, Inc.**  
717-993-9037

**DROP SHIP SPECIAL DIRECT FROM THE MANUFACTURER**  
(Serious Inquiries Only)

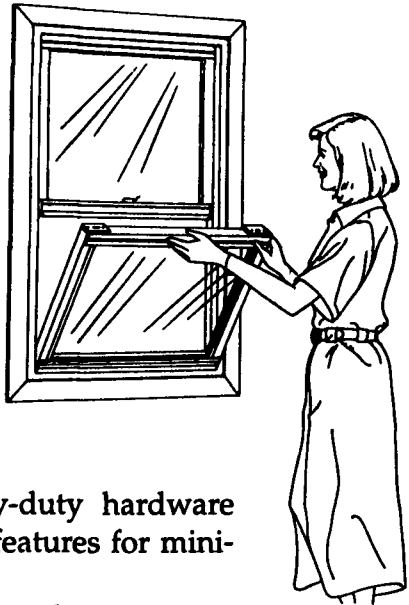
40 YEAR GUARANTEE  
**STEEL TOP BUILDING SYSTEMS, INC.**  
HOT LINE: 609-702-0550  
40'

BOSS IN TRAINING: "Boss, what are you doing? How can we sell at these prices?"  
BOSS: "We cut out the middle man and sell direct. Why should people pay high prices? (Many sizes & Models Available)"  
223 WARNER RD. • COLUMBUS, NJ 08022  
• 609-702-0550 • FAX 609-702-0440

**Low maintenance, high performance**

With FairView windows, you'll enjoy thermal efficiency season after season without painting or lots of repairs.

- Insulated double-pane glass, triple weather stripping and multi-chamberized vinyl frames keep the comfort in your home
- Tilt-in cleaning, heavy-duty hardware and low-maintenance features for minimal upkeep
- Custom-made to fit your window openings, plus a wide selection of styles and colors



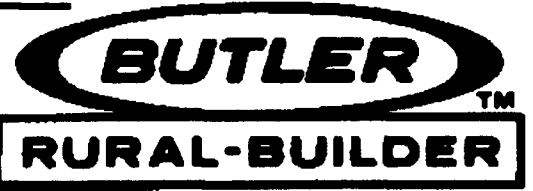
**FAIRVIEW WINDOWS** Call today and find out more about FairView windows  
Wolverine Technologies

**SENENIG'S SPOUTING**

- 5" K-Style Seamless Gutters
  - 6" K-Style Seamless Gutters
  - Half Round gutters
  - Soffit & Fascia
  - Vinyl & Aluminum Siding
  - Water Løv Gutter Guard - Never Clean Gutters Again
  - Storm Doors
  - Fiberglass Shingle Roofing
  - Corrugated Metal Roofing
- 265 Meadow Valley Rd., Lititz, PA 17543  
717-627-6886  
800-247-2107  
Fax 717-627-6892

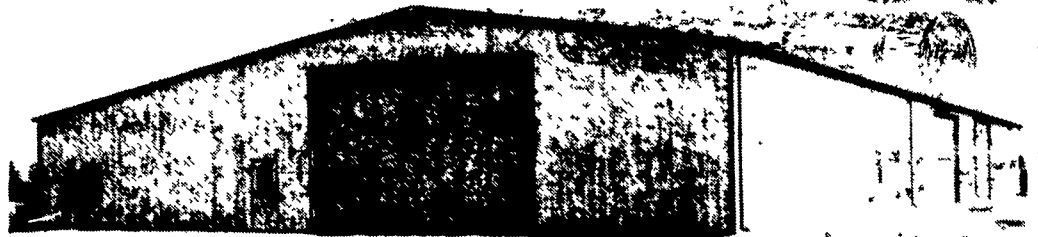
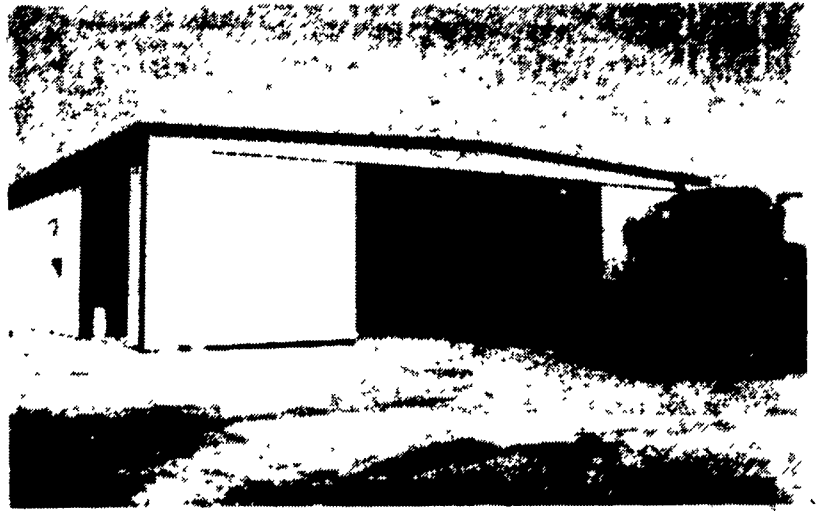
**SPEEDWELL CONSTRUCTION INC.**

70 North Esbenshade Road  
Manheim, PA 17545  
717-665-6861  
FAX 717-653-6968



No matter what type of building you're looking for shop, retail store, community building or storage facility - we build durable Butler® rural steel buildings with attractive architectural appeal.

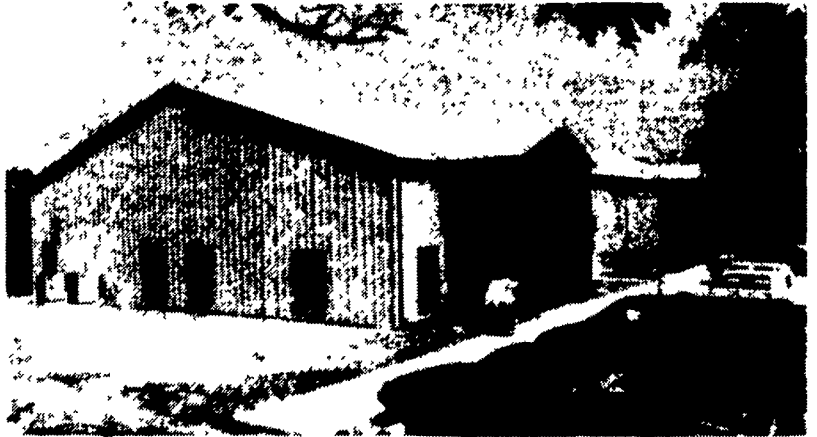
Butler shop buildings are built to give you years of high-use value, low maintenance and maximum comfort. Solid, practical design and rugged steel construction make Butler buildings durable and functional for years to come.



**Outside: Your Choice**

The appearance of your new building is a critical factor. You just tell us what you'd like and we can build it!

Our structural systems are designed to give you complete freedom in planing the size and shape of your building.

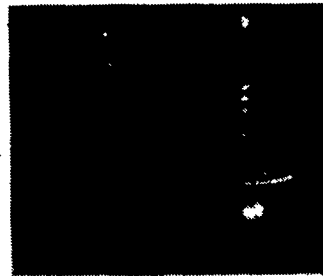


**Products that Perform from the Building Systems Industry Leader**

You can count on Butler to provide the best materials available.

For example, our standard exterior coating for painted panels is Butler-Cote® 500 FP finishing system, a full strength, 70% Kynar 500® & Hylar 5000® coating. Our coating will resist chalking and fading better than industry standard coatings.

Our fasteners represent another area where Butler offers more for your money. The Scrubolt™ fastener by Butler, available on the Butlerib wall and roof systems and the Shadowrib® wall system, is larger and more resistant to the pull-out forces of wind than industry standard fasteners.



If you are interested in any of the following buildings, please send us information on the checked.

- Mni Storage Building
- Commercial Building
- Storage Building
- Shop Buildings
- Stone Building
- Office Building

Name \_\_\_\_\_

Address \_\_\_\_\_

Town \_\_\_\_\_ State \_\_\_\_\_

Zip Code \_\_\_\_\_ Phone \_\_\_\_\_

Mail To: **SPEEDWELL CONSTRUCTION, INC.**  
70 N. Esbenshade Rd., Manheim, PA 17545