

New Holland Feeder Pigs

New Holland, PA
Wed., June 5, 1996
Report Supplied by USDA
TODAY: 660
LAST WEDNESDAY: 413
LAST YEAR: 1001 HEAD
COMPARED TO LAST WEDNESDAY, FEEDER PIGS 6.00-12.00 LOWER. ALL PIGS WEIGHED ON ARRIVAL AND SOLD BY THE HUNDRED WEIGHT.
US#1-2: 100 HEAD 30-38 LBS. 86.00-90.00, WEIGHTED AVERAGE 33.69, WEIGHTED PRICE 87.58; 105 HEAD 41-45 LBS. 77.00-85.00, WEIGHTED AVERAGE 42.81, WEIGHTED PRICE 80.51; 40 HEAD 51-55 LBS. 76.00-82.00, WEIGHTED AVERAGE 52.50, WEIGHTED PRICE 78.55; 48 HEAD 60-63 LBS. 66.00-74.00, WEIGHTED AVERAGE 60.69, WEIGHTED PRICE 71.14; 62 HEAD 70-75 LBS. 64.00-68.00, WEIGHTED AVERAGE 73.60, WEIGHTED PRICE 65.30.
US#2: 73 HEAD 34-38 LBS. 70.00-84.00, WEIGHTED AVERAGE 36.40, WEIGHTED PRICE 74.73; 81 HEAD 41-46 LBS. 66.00-76.00, WEIGHTED AVERAGE 44.36, WEIGHTED PRICE 67.77; 32 HEAD 50-57 LBS. 70.00-78.00, WEIGHTED AVERAGE 53.44, WEIGHTED PRICE 74.76; 18 HEAD 60 LBS. 64.00, WEIGHTED PRICE 64.00.
SLAUGHTER: 33 HEAD 21-29 LBS. 110.00-135.00, WEIGHTED AVERAGE 23.91, WEIGHTED PRICE 123.99.
ALL PIGS CONSIGNED TO WED. FEEDER PIG SALE MUST ORIGINATE FROM A QUALIFIED NEGATIVE OR MONITORED HERD.

Hatfield Direct

Hatfield, Pa.
Reports Supplied by Packer
For Monday, June 3, 1996
And Wednesday, June 5, 1996
MONDAY
TOTAL HOGS: 5986.
LAST WEEK: NO KILL.
55.5%-56.4% 216-269 LBS. BASE 58.00.
56.5%-58.4% 216-269 LBS. 58.94-59.88.
58.5%-60.4% 216-269 LBS. 60.83-61.76.
FEW 216-269 LBS. 62.71.
GOOD'S RECEIVING
MONDAY: 57.00.
WEDNESDAY
TOTAL HOGS: 6450.
LAST WEEK: 1870.
TREND: COMPARED TO LAST WEDNESDAY: 2.33 LOWER.
55.5%-56.4% 216-269 LBS.: BASE: 58.75.
56.5%-58.4% 216-269 LBS.: 59.69-60.63.
58.5%-60.4% 216-269 LBS.: 61.58-62.51.
FEW 216-269 LBS.: 63.46.
GOOD'S RECEIVING
WEDNESDAY: NO SALE; WEIGHT AND GRADE AVAILABLE.

Indiana Hogs

Springfield Il.
Thu June 06, 1996
USDA-II Market News Service Indiana-Ohio Direct Hog Flash
Barrows and Gilts: Mostly Steady. Demand moderate-on a light to moderate movement. Country Plants, US 1-2 220-260 lbs. 56.00-57.50 Few 55.50 & 57.00-58.50 58.00 2-3 230-260 lbs. 48.50-55.50 210-230 lbs. 44.00-48.50
Sows: Under 500 lbs. Steady to .50 Lower; Over 500 lbs. .50-1.50 Lower. US 1-3 300-500 lbs. 40.00-41.50 500-650 lbs. 41.50-46.00
Boars: 34.00-36.00
Preliminary estimate: 36,000 ****
Receipts have changed due to change in reporting base. Source: USDA-Illinois Dept of Ag Market News, Springfield, Il 217-782-4925 1000c

Lancaster Hogs

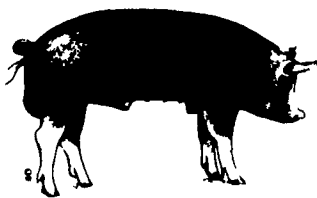
Lancaster Stockyards
Wednesday, June 5, 1996
Report supplied by USDA
HOG MARKET TODAY 618 HEAD; LAST WEDNESDAY 953; LAST YEAR 145.
BARROWS AND GILTS .50 HIGHER, INSTANCES 1.00 HIGHER.
US#1-2 220-260 LBS. 58.00-58.50; US#1-3 215-270 LBS. 57.00-58.00.
SOWS: 1.00-2.00 LOWER. US#1-3 300-450 LBS. 38.50-40.00; 450-575 LBS. 40.00-42.00.
BOARS: 300-625 LBS. 33.50-34.50.

New Holland Hogs

LANCASTER, PA
TUE JUNE 4, 1996
USDA Market News
RECEIPTS TODAY 1059
LAST MONDAY 1121
LAST YEAR 1640
TREND: Not comparable. Market not reported last Monday because of holiday.
BARROWS AND GILTS US 1-2 215-260 lbs 58.50-59.50
US 1 220-250 lbs 59.75-60.35
US 1-3 215-270 lbs 57.00-58.00
270-295 lbs 54.50-56.00

Middleburg Hog Report

Middleburg, Pa.
June 3 and 4, 1996
Report supplied by PDA
198 HEAD. BULK OF SUPPLY SOLD ON MONDAY AND REPORTED BY AUCTION. BARROWS AND GILTS 4.00 LOWER.
BARROWS AND GILTS: US#1&2 230-260 LBS. 57.00-59.75; US#1-3 220-265 LBS. 55.50-58.00; US#2-3 210-270 LBS. 54.00-56.00.



Green Dragon Hay

Ephrata, Pa.
Friday, May 31, 1996
Report Supplied by Auction
59 TOTAL LOADS.
MIXED HAY: 17 LOADS, 96.00-169.00.
ALFALFA: 6 LOADS, 125.00-162.00.
TIMOTHY: 7 LOADS, 96.00-147.00.
STRAW: 11 LOADS, 65.00-85.00.
EAR CORN: 13 LOADS, 177.00-190.00.
ORCHARD GRASS: 5 LOADS, 62.00-155.00.

Good's Hay

Leola, Pa.
Wed., June 5, 1996
Report Supplied by Auction
TOTAL LOADS: 72.
ALFALFA: 80.00-137.00.
MIXED HAY: 65.00-172.00.
STRAW: 52.00-90.00.
GRASS: 60.00-147.00.
TIMOTHY: 125.00-165.00.
CORN: 147.00-180.00.
OATS: 3.00-3.30 BU.
MULCH: 45.00.

Leinbach's Hay

Shippensburg, PA
June 1 and 4
Report Supplied by Auction
30 LOADS.
ALFALFA: 70.00-130.00.
MIXED HAY: 52.00-117.00.
BROME GRASS: 84.00-100.00.
ORCHARD GRASS: 72.00-86.00.
STRAW: 100.00.
EAR CORN: 152.00-170.00.

Vintage Hay

Paradise, PA
Thurs., June 6, 1996
Report Supplied by Auction
ALFALFA: 142.00.
MIXED HAY: 92.00.
STRAW: 81.00-86.00.
SALE TIME 12 NOON.

Kirkwood Hay Auction

Kirkwood, Pa.
Tuesday, June 4, 1996
Report Supplied by Auction
28 LOADS OF HAY.
MIXED HAY: 1ST CUTTING 100.00-126.00, 2ND CUTTING 200.00.
TIMOTHY: 95.00-118.00.
ALFALFA: 1ST CUTTING 65.00-140.00.
GRASS: 91.00-160.00.
WHEAT STRAW: 72.00-109.00.
RYE STRAW: 85.00.
SALE TIME 11 A.M.

Regional Hay

June 3, 1996
Eastern, Pa.
HAY & STRAW MARKET FOR EASTERN PA - (ALL HAY NO. 2 AND BETTER. PRICES PAID BY DEALERS AT THE FARM & PER TON.) HAY AND STRAW UNEVEN, SOME NEW CROP ON THE MARKET NOT ESTABLISHED.
ALFALFA 80.00-120.00 FEW REPORTED 140.00; NEW CROP 75.00-100.00, FEW REPORTED 100; MIXED HAY 70.00-115.00 FEW REPORTED 125.00; NEW CROP 75.00-90.00; TIMOTHY 70.00-110.00 FEW REPORTED 125.00; STRAW 50.00-70.00; MULCH 25.00-45.00.
SUMMARY OF LANCASTER CO. HAY AUCTIONS FOR WEEK ENDING 05/31/96. PRICES PER TON: LOADS: 140 HAY, 60 STRAW & 29 EAR CORN. ALFALFA 115.00-170.00; MIXED HAY 87.00-165.00; TIMOTHY 90.00-135.00; STRAW 55.00-85.00; EAR CORN 170.00-190.00.
SUMMARY OF CENTRAL PA. HAY AUCTIONS FOR WEEK ENDING 05/31/96. PRICES PER TON: LOADS: 105 HAY, 22 STRAW & 24 EAR CORN. ALFALFA 83.00-148.00; MIXED HAY 70.00-130.00; TIMOTHY 72.00-115.00; STRAW 47.50-77.50; EAR CORN 147.50-170.00.

Diffenbach Auction Center

New Holland, Pa.
Monday, June 3, 1996
Report Supplied by Auction
TOTAL LOADS: 50.
ALFALFA: 115.00-160.00.
MIXED HAY: 87.00-195.00.
TIMOTHY: 110.00-145.00.
ORCHARDGRASS: 107.00.
STRAW: 65.00-100.00.
EAR CORN: 172.00-180.00.

Dewart Hay

Dewart, PA.
Monday, June 3, 1996
Report Supplied by Auction
13 LOADS OF HAY, 48.00-63.00.
STRAW: 3 LOADS, 50.00-55.00.
CORN: 4 LOADS, 127.50-130.00.
OATS: 2 LOADS, 2.00 AND 2.20 BU.

Kutztown Produce Auction

Report Supplied by Auction
Saturday, June 1, 1996
TOTAL LOADS: 16.
ALFALFA HAY: 60.00.
CLOVER MIX: 127.50.
MIXED HAY: 65.00-132.50.
TIMOTHY: 72.00-115.00.
WHEAT STRAW: 55.00-67.50.

PIGS
STATE GRADED SALE
FRIDAY
JUNE 14
1:30 P.M.
AT
Carlisle
LIVESTOCK MARKET, INC.
Exit 12 Off I-81 Turn South
(717) 249-4511 or
Evenings Jim, 249-2359

FOR SALE - MANURE
20-25 ton trailer loads
\$6 to \$8/per ton depending on distance
VINTAGE SALES STABLES, INC.
Paradise, PA 17562
(610)458-5060 - (717)442-4181
L. Robert Frame, President

WALTER M. DUNLAP & SONS
Lancaster Stockyard
1147 Litz, Pike, Lancaster, PA 717-397-5136
OFFER ALL CATTLE & HOG FEEDERS
TWO MARKETING DAYS

Monday	Wednesday
9 AM: Goats, Slaughter Calves, Sheep/Lamb Small Calves	6 AM-NOON Hog Receiving
9:30 AM: Bulls, Heifers, Steers, Cows	11 AM: Slaughter Cattle
1 PM: Hog	12 NOON: Feeder Cattle

GRADED SOW SALE
2nd & 4th TUESDAY, EACH MONTH
Receiving - 6 A.M. - 11 A.M.

PENNFIELD GRAIN BANK
START YOUR BARLEY BANK NOW!!
At Pennfield you can use the Barley crop that is in the field to pay for your feed bills now.

Prices Week Of 06/10/96
Corn \$5.36 Bu.
Soybeans \$7.55 Bu.
Barley \$3.80 Bu.

- No Storage Charges
- Prices Updated Weekly
- Grain Bank Balance Shown On Each Invoice
- No Hidden Charges

For every ton of qualifying dairy feed purchased you will receive one ton of grain back hauled at no charge

Call 1-800-733-1111
Pennfield Feeds

INDEX
Four Sections

COLUMNS
Pa. Young Farmers..... A27
DENow is the Time..... A10
On Being A Farm Wife..... B 3
All Gardens..... B 4
Family Living Focus..... B 5
Taking Time..... B 9
Ida's Notebook..... B18
Woodland News..... D 5
Grazing Gazette..... D14

DEPARTMENTS
Editorial..... A10
Farm Calendar..... A10
Farm Focus..... A10
Futures..... A16
Mailbox Markets..... B19
Sale Reports..... B22
Classified Ads..... C 2
Fair Happenings..... D 5
Business News..... D 6
Public Auction Register..... D30

HOME AND YOUTH
Homestead Notes..... B 4
Home On The Range..... B 6
Cook's Question Corner..... B 8
Kid's Korner..... B10
You Ask, You Answer..... B24

FEATURES
Winterset Farm..... A20
Strawberry Roundup..... A36
Another Day..... A38
Lamb & Wool Queen..... B 2
Wills Grange..... B12
Spring Rally..... B18
Atlantic National..... D 3
Pa. Fair..... D 8

DAIRY
DHIA Focus..... A25
Lancaster DHIA..... D12