

Grantsville Livestock

Grantsville, Maryland
Report Supplied by Auction
Sat., June 1, 1996

STOCK BULLS AND STEERS 200-500 LBS 40.00-62.00.
STOCK HEIFERS 30.00-47.00.
SLAUGHTER STEERS GOOD TO CHOICE 54.00-59.00; MEDIUM TO GOOD 40.00-44.50.
HOLSTEIN STEERS GOOD 38.00-44.00; LIGHT 30.00-37.50
SLAUGHTER HEIFERS GOOD TO CHOICE 45.00-55.50, MEDIUM TO GOOD 38.00-44.00.
BULLS HEAVY 40.00-47.00, LIGHT 34.25-48.75.
COWS FEW HIGH DRESSING UP TO 38.00, UTILITY HOLSTEIN 28.00-35.50, CANNERS 24.00-30.00, CULLS 24.00 AND DOWN.
VEALS GOOD TO CHOICE UP TO 86.00, MEDIUM TO GOOD 40.00-55.00. BOB CALVES: 30.00 AND DOWN.
HOLSTEIN BULL CALVES RETURN TO FARM 90-120 LBS. 60.00-80.00.
HOLSTEIN HEIFER CALVES RETURN TO FARM 100-120 LBS. UP TO 100.00.
BEEF CROSS CALVES RETURN TO FARM UP TO 75.00.
HOGS: TOP QUALITY 54.00-58.00, HEAVY 54.00-57.00, LIGHT 40.00-52.00, FEEDER PIGS BY THE HEAD, UP TO 50.00.
SOWS: UP TO 41.50
MALE HOGS: 20.00-35.50.
SPRING LAMBS: 20-40 LBS. 70.00-90.00, 45-90 LBS. UP TO 110.00; CULLS 80.00 AND DOWN.
SHEEP: UP TO 45.00.
GOATS: LARGE 50.00-115.00, MEDIUM 30.00-60.00, SMALL 10.00-40.00, ALL BY THE HEAD.

Valley Stockyards

Athens, Pa.
June 3, 1996
Report supplied by auction
HOLSTEIN HEIFER CALVES TO 80.00.
VEAL CALVES, NONE.
VEALER BULL CALVES TO 107.50.
SLAUGHTER CALVES 40.00 AND DOWN
GRASSERS AND FEEDERS 18.00-37.50.
LAMBS TO 117.50
SHEEP 26.00-41.00
HOGS, 200-250, 44.00-65.00.
SOWS, NONE
BOARS TO 30.50
PIGS, NONE
HEIFERS, FAT, TO 34.50.
STEERS, NO GOOD ONES.
STEERS, FEEDER, 27.50-42.00.
BULLS 18.50-38.50.
GOOD COWS, 31.50-34.75.
COWS MEDIUM 26.25-30.50.
COWS POOR OR SMALL 25.50 AND DOWN.
CATTLE MARKET STEADY.
CALF MARKET STEADY.
HORSES TO 600.00.
PONIES TO 380.00.
GOATS TO 100.00.
HOG MARKET HIGH; LAMB MARKET REAL GOOD.

St. Louis Cattle, Hogs

Springfield IL
Monday June 3, 1996
USDA-II Market News Service National
Stockyards Illinois terminal slaughter

cattle market

Cattle; 500 head, last week 350, and last year 800 head. Compared to last week slaughter steers and heifers 1.00 higher. Slaughter cows 1.00 lower. No test on slaughter bulls. Supply mainly select and choice slaughter steers and heifers; around 12% cows and 12% holstein steers.
Slaughter steers: Choice 2-4 1000-1250 lbs. 56.00 to mostly 57.00, few YG 2-3 58.00. High choice and Prime YG3 1240-1260 lbs. 58.50-59.00. Select and choice 2-3 950-1400 lbs. 53.00-56.00. Select 2-3 950-1250 lbs. 48.00-53.00 Holstein steers: Choice 2-3 1300-1500 lbs. 50.00-52.00; Select and choice 2-3 1150-1300 lbs. 47.00-50.00; Select 2 45.00-47.00.
Slaughter heifers: Choice 2-4 900-1200 lbs. 55.00-56.50; few 57.00. Select and choice 2-3 850-1150 lb. 53.00-55.00; Select 2 45.00-47.00.
*Slaughter cows: Cutter and Boning Utility 1-2 28.00-31.00, few high yielding up to 32.00. Canner and low dressing Cutter 1-2 25.00-28.00.
Bulls: Few Yield grade 1-2 1500-2050 lbs. 39.00-40.00.
* Breaking Utility and Commercial grade cows absent.

North Jersey Livestock

Hackettstown, NJ
Report Supplied by Auction
Tuesday, June 4, 1996
CALVES .09-.90.
COWS .20-.37% .
EASY COWS .15-.23% .
FEEDERS 300-600 LBS. .41-.83
HEIFERS .33-.59.
BULLS .30% -.49% .
STEERS .32-.58% .
HOGS .10-.53.

ROASTING PIGS EACH 4 00-32 00
BOARS 30% -.36
SOWS 23-.39.
SHEEP .05-.45
LAMBS EACH 24 00-78 00.
LAMBS PER LB 38-1.32
GOATS EACH 5 00-127 50
KIDS EACH 10 00-70 00
TOTAL 861

Jersey Shore Livestock Market, Inc.

Auction every Thursday at 4:00 p.m.
Jersey Shore, Pa.
Report supplied by Auction
Thursday, June 6, 1996
RETURN TO FARM CALF 70.00-112.00
GOOD VEAL 40.00-69.00
COMMON VEAL: 10.00-39.00
CHOICE STEERS. 55.00-60.00
SELECT STEERS: 52.00-56.00
COMMON STEERS. 46.00-51.00.
COMMERCIAL COWS: 31.00-38.25
CANNERS-CUTTERS: 25.00-33.00
SHELLS: 16.00-24.00.
CHOICE HEIFERS: 55.00-60.00
SELECT HEIFERS: 52.00-57.00
COMMON HEIFERS 35.00-51.00
GOOD FEEDERS: 37.00-48.00.
COMMON FEEDERS: 15.00-36.00
BULLS: 36.00-42.50

Indiana Farmers

HOMER CITY, PA
JUNE 6, 1996
CATTLES 132 Steers Steady to 2.00 higher, Heifers Steady to 2.50 higher; Cows Steady
STEERS Choice 1050/1300 lbs, 58.00-62.75, Select 52.00-55.75, Standard 39.00-46.50, Holsteins Few Select 47.00-51.00
HEIFERS Choice 1025/1035 lbs, 54.50-62.50, Select 48.00-54.50, Standard 32.75-46.00
COWS Breaking Utility and Commercial 33.00-37.00, Cutter and Boning Utility 28.25-32.75, Canner & Low Cutter 23.25-26.25, Shells down to 18.00
BULLS Few Yield Grade 1 1390/1550 lbs, 38.25-39.50, Few Yield Grade 1 115/1400 lbs, 31.00-38.25
FEEDER CATTLE Few STEERS M1 600 lbs, one at 47.00, M&L 1s 525 lbs, 37.50-39.00, Few HEIFERS M1 600/650 lbs, 40.00-48.00, M&L 2s 300 lbs, 30.00-40.00, Few BULLS M2 300/850 lbs, 33.00-39.00
CALVES 45 Good 125/260 lbs, 35.00-70.00, Standard and Good 75/120 lbs, 20.00-30.00, Utility 40/70 lbs, 10.00-20.00, FARM CALVES Steady, No 1 Holstein Bulls 45/120 lbs, 60.00-86.00; Few No 2 Holstein Bulls 80/90 lbs, 37.50-47.50; Few No 2 Holstein Heifers 80/95 lbs, 35.00-57.50; Beef Cross Bulls & Heifers 65/115 lbs, 37.50-47.50
HOGS: 45. Barrows and Gilts Steady to 5.00 higher, 1-3 220/250 lbs, 50.00-58.25, 2-3 220/320 lbs, 47.00-49.00; 1-3 140/190 lbs, 50.00-53.00
SOWS: 1-3 460-490 lbs, 34.50-42.00; 1-3 515/670 lbs, 39.25-44.75, BOARS 155/400 lbs, 30.50-36.50
SHEEP 28: Choice 85/105 lbs, 98.00-88.00, 55/70 lbs, 88.00-107.00, Slaughter Sheep 16.00-26.00

Front Royal Horse Sale

Front Royal, Va.
Saturday, June 1, 1996
117 HEAD SOLD BY THE HEAD, ALL WEIGHTS ESTIMATED
RIDING HORSES, SERVICEABLE AGE AVERAGE TO GOOD QUALITY, 925-1175 LBS 540.00-750.00, 800-900 LBS 410.00-550.00
BETTER QUALITY 950-1250 LBS 725.00-1025.00, 800-900 LBS 610.00-700.00, EXCEL LENT QUALITY 1150 LBS 1 AT 1710.00
RIDING PONIES SMALL 215.00-380.00, LARGE 330.00-525.00
LOOSE HORSES AVG TO GOOD FLISH, 925-1200 LBS 560.00-785.00, 2 AT 900.00 AND 950.00

New Holland Sales Stables Goat and Sheep Sale

Monday, June 3, 1996
GOATS 676 HEAD BILLIES 75.00-100.00 AND 100.00-135.00, MUTTON 75.00-90.00, NANNIES 40.00-55.00 AND 55.00-65.00, YEARLINGS 40.00-50.00 AND 50.00-65.00, KIDS 20.00-30.00 AND 30.00-40.00
SHEEP 675 ALL WEIGHTS, RAMS 25.00-35.00 EWES 25.00-40.00, 1 YEAR OLD 35.00-70.00, 2 YEAR-OLD 30.00-50.00
LAMBS 40.60 LBS 110.00-130.00, 60.80 LBS 105.00-120.00, 80.100 LBS 105.00-115.00, 100.120 LBS 95.00-115.00

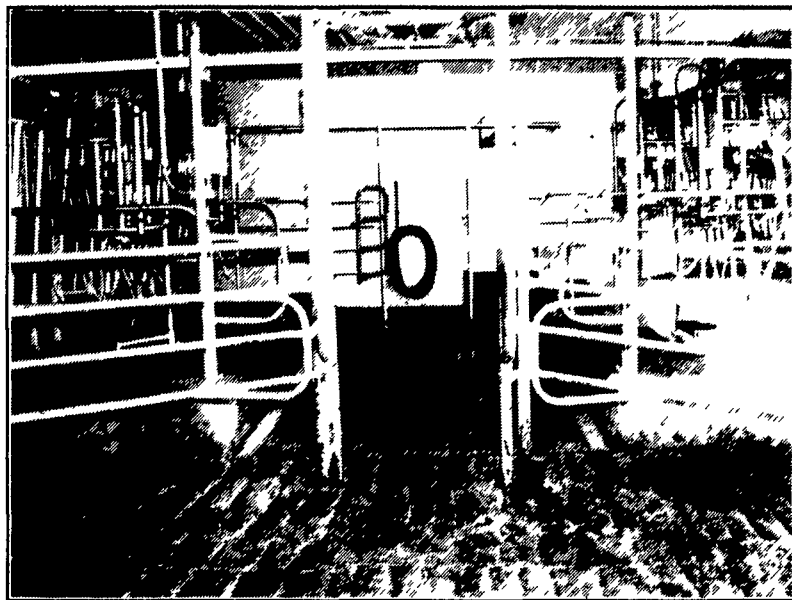
New Holland Horses

New Holland Sales Stables
New Holland, PA
Monday, June 3, 1996
Report Supplied by Auction
294 HEAD MARKET STRONGER
WORK HORSES 910.00-1300.00
DRIVING HORSES 485.00-825.00
RIDING HORSES 585.00-950.00
BETTER RIDING HORSES 1050.00-1975.00
REGISTERED RIDING 900.00-2125.00
KILLERS, 1 AT 1160.00, III AVYWEIGHTS 700.00-950.00, LIGHTWEIGHTS 400.00-600.00
PONIES 300.00-405.00
LARGE PONIES 500.00-585.00
COLTS 165.00-450.00

New Holland Dairy

New Holland Sales Stables
Wednesday, June 5, 1996
Report supplied by auction
DAIRY COWS 105, HEIFERS 80, 6 BULLS MARKET STEADY
LOCAL FRESH COWS 725.00-1050.00
FRESH HEIFERS 785.00-1200.00
LOCAL SPRINGERS 650.00-1250.00
UPSTATE LOADS FRESH 1000.00-1550.00
HERD OF 50 HEAD ALL STAGE COWS 275.00-985.00
LOAD OF CANADIAN COWS FRESH 685.00-1175.00, SPRINGERS 810.00-1435.00
SPRINGING HEIFERS LARGE 985.00-1135.00, SMALL 550.00-850.00
SHORTBRED HEIFERS 925.00-1000.00
OPEN BREEDING AGE HEIFERS 525.00-675.00, SMALL OPEN HEIFERS 210.00-475.00
BULLS 385.00-525.00, PUREBREDS 510.00-560.00

You're Invited
OPEN HOUSE

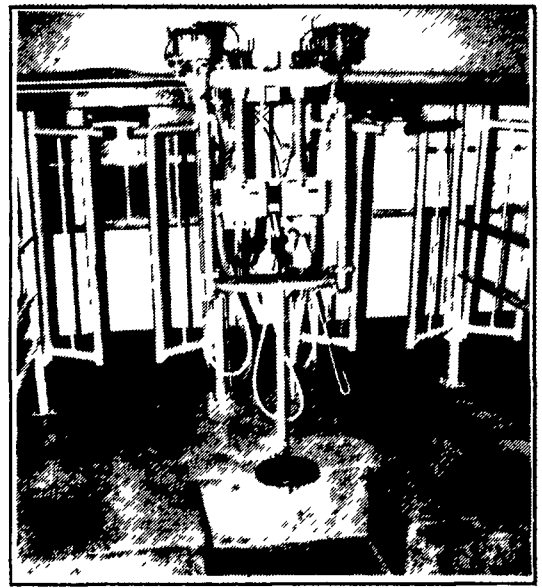


Leonard Smoker & Son Greg

Refreshments Will Be Served

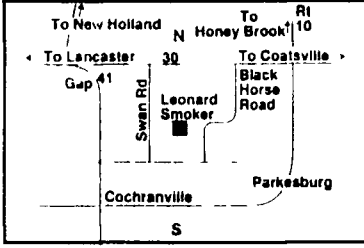
All New Agromatic Double 4 Walk-Through Featuring Westfalia Equipment

"Milking is much easier, less strain on our knees & legs. Plus we save 45 minutes each milking it only takes one person 1 1/2 hours to milk 87 cows! Clean up is a breeze. We like our new system...it was priced right and gives us the option to expand our herd. Installation was smooth and the cows adjusted well!"



Featuring the Following Equipment

- Metatron Milk meters
- New Classic 300 Milkers
- Autopuls Pulsation
- Milk Receiver System



FISHER & THOMPSON, INC.
DAIRY & MILKING EQUIPMENT SALES AND SERVICE
MAIN OFFICE 15 NEWPORT RD LEOLA PA 17540
717-656-3307
BELLEVILLE, PA MIFFLINBURG, PA
717-667-6291 717-966-3900

Genex
Your reliable source for Excellence in Genetics or Service
1-800-444-5456
Lancaster 569-0411

Atlantic Dairy Cooperative
1225 Industrial Highway
Southampton, PA 18966
1-800-645-MILK
adc
Atlantic Dairy Cooperative
Since 1917

ab
AGRI-BASICS, INC.
Applying the Basics of Sound Nutrition and Technology to Ration Formulation
1-800-361-9265

LAPP'S BARN EQUIPMENT
PHONE: 717-442-8134
5935 OLD PHILADELPHIA PIKE, GAP, PA 17527
WE SERVICE WHAT WE SELL - Radio Dispatched Trucks

MUELLER Dairy Farm Equipment
Rufus Brubaker Refrigeration
717-786-1617